



4

Venom of the Dragon

Venom of the Dragon

The underworld of Baal is a quantum realm from which terrible creatures emerge to feed on our surface world above. The Baal extraterrestrial forces have genetically engineered hoards of monstrous creatures for the subjugation of human populations inhabiting the Earth's surface. The demonic roars of giant quantum predators with glowing red eyes elicit states of bewilderment and fear, as they stalking in the still of night.



Such devious and perplexing feeding activities are undertaken to the spiritual and psychological detriment of Earthly humanity, by technological manipulation of natural processes to promote restrictive conditions in our local learning environment. ET humanoid species behind this ancient control system were revealed by an ethereal Source known as the Cassiopaeans, channeled by Laura Knight-Jadczyk on September 30, 1994:

Q: (L) Was the human race genetically engineered to be slaves? A: Yes.

Q: (L) And who were the genetic engineers of this slavehood? A: Lizard beings.

Q: (L) Where do they come from: Earth or another planet? A: Other... Qaddeera.

Q: (L) What star system is that in? A: Zeta Reticuli.

Q: (L) Are the little gray beings from Zeta Reticuli also? A: Yes. Q: (L) Are the little gray beings... A: Cybergenetic.

Q: (L) Are they created by the lizards? A: Yes. Q: (L) Do they have souls? A: They are Decoys...

Q: (L) Are the Lizzies planning to take over our planet? A: Yes...

Q: (L) Do they utilize such things as possession by dark energy forms to effect their control? A: Yes.

Population figures were given upon questioning during a later follow-up session dated October 14, 1995:

Q: (L) In terms of finite numbers... how many Lizzies are operating on the planet? A: 300,000...

Q: (L) How many grays [are operating on the planet]? A: 2,750,000.

Highly consistent eyewitness descriptions of the giant reptilian humanoids have been made by American and European UFO abductees, as well as by residents of the Solomon Islands. Their claims are supported by various sketches, drawings and paintings of these invasive otherworldly beings, depicting unusual facial ridges covered in green scales framing large, yellow, glowing eyes with vertical pupils (examples above).

While morphological identification of the giant reptilian humanoid species from extant skeletal remains in known cultural contexts throughout the ancient world represents a crucial initial step, further work has focused on the production of a forensic 3-dimensional reconstruction of the mature male skull phenotype.

Study of the closely related cranium structures of the more abundant examples of reptilian/human hybrid individuals also provides significant morphological data regarding unusual cranio-facial characteristics inherited via artificial insemination, conferring paternal nuclear DNA from the Homo *draconis* species.

A 9,600-year-old reptilian/human hybrid skull of this type, belonging to the designation Homo sapiens *draconis*, was excavated in 1909 at the mouth of a limestone cave in southern France, known as Combe-Capelle (below).¹ This skull displays a heavy brow formation and raised ridges below the eye sockets that closely resemble the highly distinctive cranio-facial architecture of the giant reptilian humanoids.



Reptilian hybrid skull
Combe-Capelle, France

Fragmentary remains of the Combe-Capelle hybrid skull were reconstructed many decades ago, and originally designated as a distinct Aurignacian species of archaic hominin (~46,000-23,000bp), based on its strong morphological similarity to other hybrid skulls known from that timeframe. Radiocarbon dating techniques applied many years later provided a much younger date of 9,600 bp, although genetic analyses of the specimen will certainly confirm that ET hybridization dynamics were prevalent during both timeframes.

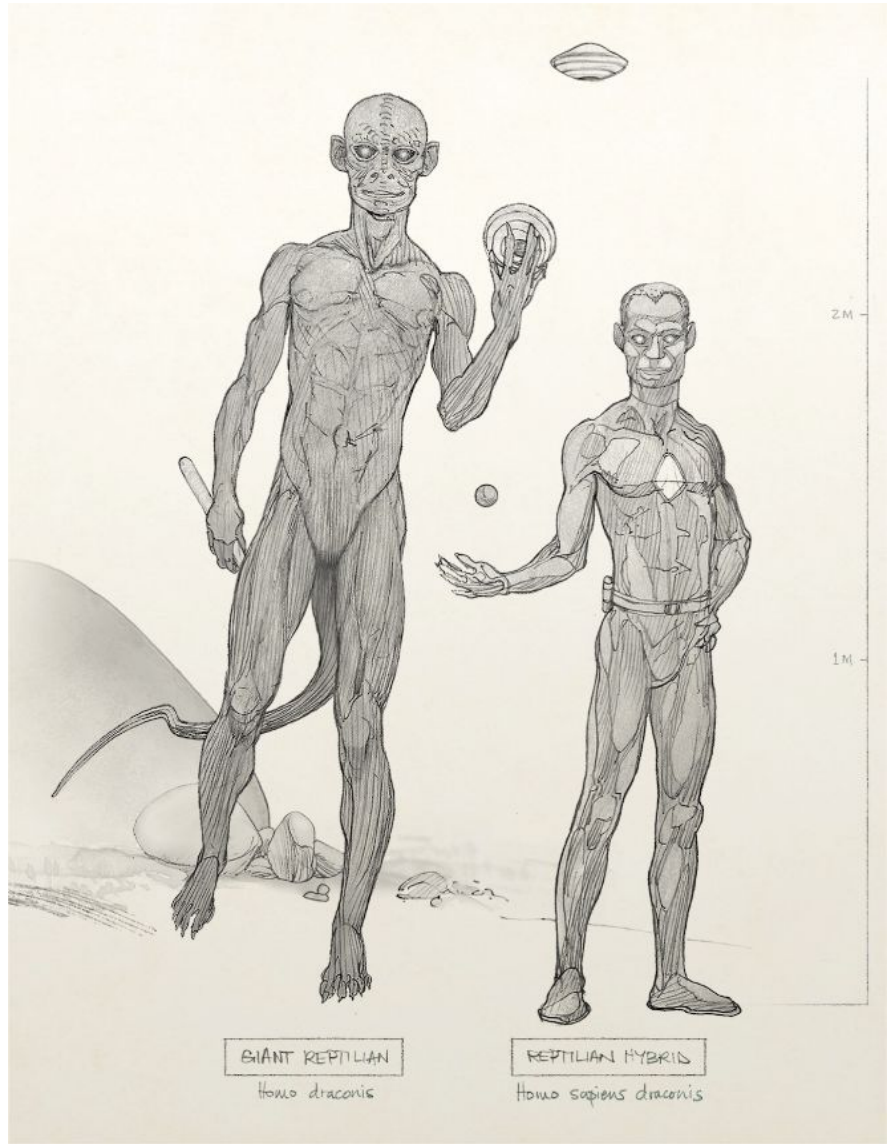
An intact reptilian/human hybrid skull attributed to the nomadic Yamnaya people was uncovered in 2009 by archeological excavations in the Samara region of southwestern Russia (opposite). Dated to 4,900bp, this specimen displays the same pronounced cranio-facial features of the giant Homo *draconis*. Strong, shelf-like ridges enclose recessed areas surrounding the infraorbital foramen, giving an entirely non-human facial appearance to this ancient hybrid individual whose skull was ritually painted in a thick layer of red ochre.

Comparison of the temporal and cultural context of hybrid skulls such as these provide great insight into the progression of successive phases of global hybridization operations conducted by the Baal ET consortium that correlate with the rise of dynastic civilizations in various regions of the world from ~6,000-3,000bp.



Reptilian hybrid skull
Yamnaya nomadic culture
Samara, Russia - 4,900bp

Male heirs of most dynastic civilizations were actively engaged in conquests that facilitated serial rape and widespread dissemination of their own reptilian human hybrid genes into any and every population that could be subjected to their psychopathic dictates. Highly pervasive genetic legacies of dynastic families such as the Qin of China and the Mongol ruler Genghis Khan and his sons are certainly among 11 major reptilian/human hybrid contributors to the Y-chromosome diversity of Asian populations.²



Using highly advanced 4th-density time-travel techniques, the giant reptilian ET humanoid species has hybridized themselves with every race –every haplogroup– on Earth, leaving a brutal trail of devious psychopathic rulers in their wake. The skeletal features of these reptilian/human hybrid kings are typically larger than the average human, with narrow waists, longer fingers and toes, as well as long, straight necks.

Unusual combinations of facial features that are prevalent in reptilian/human hybrids include slightly raised, pointed ears, large teeth and strong mandibles with heavy cheekbones and slightly raised brow structures. Reptilian/human hybrid backcrosses of the Khoikhoi people of present-day South Africa also display planar faces with fine nasal structures that do not project far in front of the brow when viewed in profile (above, left).

Another recognizable features of reptilian hybrids, called 'steatopygia' by physical anthropologists, has been elevated by media pageantry as the modern epitome of beauty. Khoikhoi women were even put on display to show how their fat is preferentially stored in the belly and buttocks rather than the limbs of the body, as observed among *alligators and various other reptiles that reserve fat stores in the upper part of the tail.*

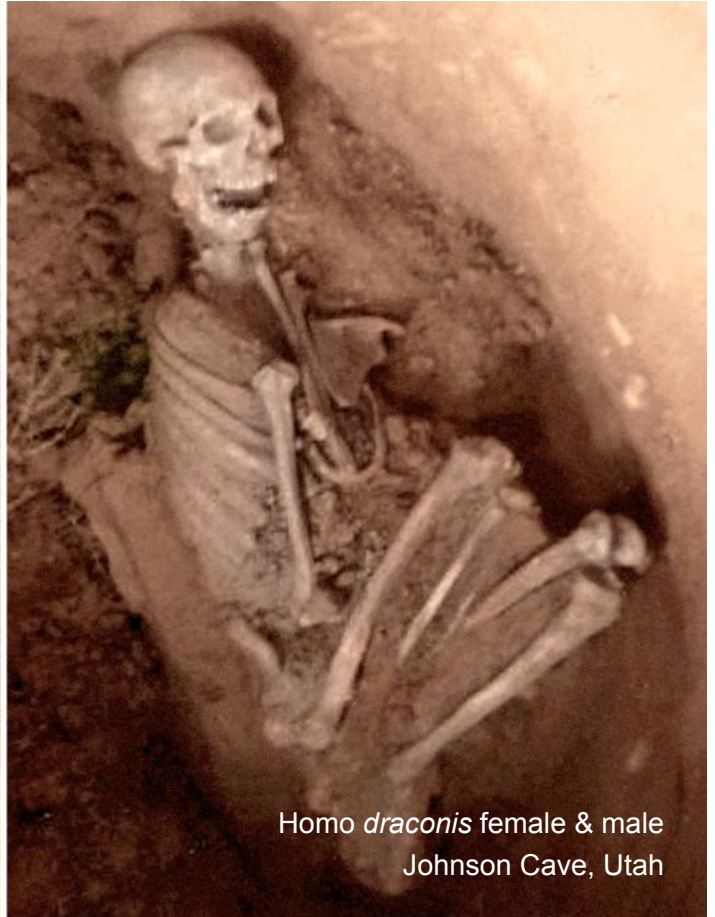


Tláloc, God of Celestial Waters
Magnetic geopolymer andesite
Teotihuacan, Mexico ~5,000bp

Aspects of advanced cultural and spiritual practices of the Atlantean civilization grew into distorted forms in the millennia following the demise of that psychoacoustic society. Disparate spiritual practices upheld by the Atlantean Sons of the Law of One were entirely rejected and inverted by the Sons of Baal, representing an intense spiritual polarity that found further expression among later cultures, particularly in Central America. Geopolymer stone masks of Tláloc, Maya God of Celestial Waters, display unmistakable features of the giant ET reptilian humanoid species as raised outlines encompassing the eyes and cheeks of the face (above).

From ~6,000-3,000bp, parallel cultural activities dominated at Teotihuacan, Mexico; Mohenjo-Daro, Pakistan; Sanxingdui, China; Angkor, Cambodia; and the West African site of Yikpabongo, Ghana. Votive practices including blood offerings, human sacrifice and worship of giant *Homo draconis* were addressed by the Cassiopaea Source during a session by psychic medium Laura-Knight-Jadczyk on August 22, 1998:

Q: (L) Did any aliens at all, and specifically the Lizzies, ever live among mankind and receive worship? A: They did not live among mankind, but they did interact directly with human beings, at various points in the past. It was at those points when human beings were ready, willing and able to accept deities appearing directly from outside sources and then worship them. Such things would not have occurred in the recent past. But, beware, it may very well occur very soon.



Homo draconis female & male
Johnson Cave, Utah

Scientific identification of the *Homo draconis* –a technologically advanced extraterrestrial species– represents *the greatest achievement in the field of exoplanetary cryptozoology*, comprehensively exposing the reptilian physiology of the greatest hyperdimensional predator of humanity on Earth.

Physiological features of the giant skulls of *Homo draconis* indicate the presence of several specialized anatomical features that are known among reptile species found throughout the world, *yet never before observed in humanoid physiology*. The off-world origin of this giant, upright-walking predatory reptilian species places it in a distinctive class of a *quantum predator*, one possessing supreme intelligence and transdimensional technologies for interstellar travel.

Deep, scaled facial ridges covering the cheekbones of the giant reptilian humanoids hide the presence of a pair of *thermosensory loreal pit receptors linked to the nervous system through the infraorbital foramen*. In addition to facial loreal pits, venom glands seated in the mandibles of *Homo draconis* confirm the humanoid species' close homology to the *pit viper* snake family *Crotalus*, directly confirming ancient Sanskrit textual references to the *Nagas*, a cosmic race of hyperdimensional 'serpent men' associated with great knowledge –yet also with the destroyer Kali, Hindu Goddess of death and destruction.



Giant reptilian humanoid skull
Homo *draconis* female
Tantric necromancy mask, Tibet

The disciplined sculptors of ancient times have created masterpieces that have well withstood the test of time, and concisely describe the unusual physiological features of giant reptilian humanoid visitors that were once worshipped en masse at selected temples in various regions of the world ~3,100 years ago.

In Tibet, Buddhist monasteries were specifically constructed atop more ancient Paleo-Sanskrit sacred sites to hide and protect the entrances of vast subterranean tunnels leading to the Himalayan underworld of *Agarta*. Relics obtained from these ancient Sanskrit monastic traditions include neuromancy masks, each crafted by sectioning and hand-carving a giant reptilian humanoid skull of *Homo draconis* (opposite).



As one might suspect, *DNA analyses of these giant skulls from Tibet have never been published despite the fact that they represent an abundant source of irrefutable evidence of a giant humanoid species.*

Found among dozens of similar votive statuary items, a remarkable bronze head cast by artisans of the Ba Shu culture of present-day Sanxingdui, China accurately portrays the smooth, gracile facial features of a juvenile individual, belonging to the giant reptilian humanoid species designated *Homo draconis* (above left).

However, the great majority of bronze representations of reptilian giants from Sanxingdui display the distinctive presence of pronounced ridges below the ocular cavities, enclosing the infraorbital foramen (above right). This votive portrait head wears a crown of coiled DNA, referencing *the genetic supremacy of this domineering ET species that has genetically engineered the surface-dwelling population of our planet.*

Excavation of these magnificent bronze portrait heads, as well as immense bronze resonator urns for sound amplification, from a series of sacrificial burial pits at Sanxingdui provided reliable radiocarbon dates of ~3,100bp from burnt ivory present in the top layers of the deposits. However, original context of these bronzes is far older, according to the clear indications from inscribed Paleo-Sanskrit hieroglyphs and votive iconography, in addition to the extremely high level of metallurgical skill and complexity of the masterworks.



Paleo-Sanskrit votive texts adorn many surfaces of the stunning bronzes, many having already been translated as votive hieroglyphic texts consistent with religious expressions from other regions of the world during that time period. The votive cultural name of the ancient people of Sanxingdui is 'Ba Shu', which displays the same name and all the animal/human hybrid imagery of the Atlantean Sons of Belial, much later referred to in the Bible as 'Baal'. Of course, these same giant ET humanoids were involved in the partial construction of the immense 'Baalbek' temple, *which easily exceeds twice the size human temples.*



The Mandarin Chinese placename 'Sanxingdui' is a combination of three characters meaning "three star mounds", describing three ancient earthen mounds at the site near the Yazi River, reflecting the stellar configuration of Orion's Belt in reference to the Orion Pyramid Complex of Giza, Egypt. The ancient Paleo-Sanskrit votive names for both the Ba Shu culture and the Yazi river can be translated using the cipher key:

Yazi	ya z i	commencing from within This
Ba Shu	ba shu	luster (of the) cleanly
Baalbek	ba al bek	luster (of the) ability to sound: the One

The lands of China were known as 'Wu' during the time of the Paleolithic high civilization, signifying the votive aspiration "wish", paralleling the closely related word 'vu' meaning "volition". The word 'ba', signifying "luster", held a deeper scientific meaning during that time *relating to enhanced biophotonic radiation of skin.*

Sanxingdui, China (30.99115°N, 104.20239°E) is located 4,274 miles from the Great Pyramid of Giza, Egypt, representing 17.17% of Earth's mean circumference (⁴³/₂₅₀). Exact geopositioning at 31° North latitude ensures efficient transduction of infrasound standing wave resonance from the Orion Pyramid Complex, a sacred site that had represented the geophysical centerpoint of the Atlantean psycho-spiritual cosmology.

Dozens of exquisite bronze votive portrait heads and giant masks excavated at Sanxingdui also match the specific religious iconography of ET worship represented in Atlantean geopolymer jade excavated on the Chinese Inner Mongolian prairie in 2006. The intact, unpolished surfaces of the geopolymer jade artifacts of Wu (above) were called 'black-skinned jade' by Xiao Jing Jin Xi Yong, Korean-Chinese archeologist who discovered the remains of an ancient city matching Edgar Cayce's descriptions of the 'Golden City' of Taoi.

The immense insect-like eyes of the giant quantum predator Homo *draconis* induce a state of transfixion in its human victims. This hypnotizing effect traps the awareness of an abducted person and channels the excited emotional energy of fear, which is often enhanced with large doses of gamma hydroxybutyrate (GHB) into the victim's bloodstream, rapidly paralyzing the victim's body while the mind is left completely alert. The calm, expressionless faces and mesmerizing eyes of the Sanxingdui reptilian portrait heads capture the dominating will and vacuous presence of these aerial stalkers at work among their human worshippers.

Large bronze vessels, giant masks and portrait heads of the Ba Shu were cast by the lost-wax process in leaded bronze alloys (Cu-Sn-Pb). Called 'zun', these items have been incorrectly labeled 'wine vessels', but were actually used as resonators for amplifying low-frequency sound waves within underground chambers.



Just as Greek 'echea' vessels (meaning "echoer") were used as resonators for amplification of sound waves within Mediterranean amphitheaters,³ the immense lead bronzes at Sanxingdui, China were designed for sound wave amplification within underground temples present below the site that have yet to be identified.

The unexplained presence of 'highly radiogenic' lead in the majority of bronzes excavated at Sanxingdui –showing anomalous excess of heavy lead isotopes Pb^{207} and Pb^{208} – is also seen in comparable leaded bronzes, leaded mural pigments, leaded glassware and other advanced artistic materials produced at various related sites of the same period and throughout the broader region.⁴

Metallurgists comparing Bronze Age artifacts from different regions of the world assert the falsehood that 'highly radiogenic' lead samples are derived from unknown sources exclusively exploited during particular time periods. In fact, high knowledge was widely shared at that time pertaining to simple furnace techniques for achieving phonon resonance transmutation of tin into lead and copper into nickel.

Atomic vibrations of lighter lead isotopes can be employed as phonon transfer agents that, when heated in a furnace with molten tin, induces the appropriate phonon resonance for conversion of tin to the heavier isotopes of lead. This astoundingly simple furnace process can be easily verified in experiment, and accounts for anomalous isotopic ratios observed among Bronze Age cultures in Africa, Anatolia and Asia.

The unexplained presence of nickel in the sickle-shaped blades and scepters, shows preferential selection for use in the production of long, thin items (requiring greater strength), matching copper artifacts excavated in Anatolia from the same time period. While historians have once again implicated shared exploitation of an unknown natural ore source for Bronze Age Cu-As-Ni alloys, the reality of the matter is much more complex.⁵

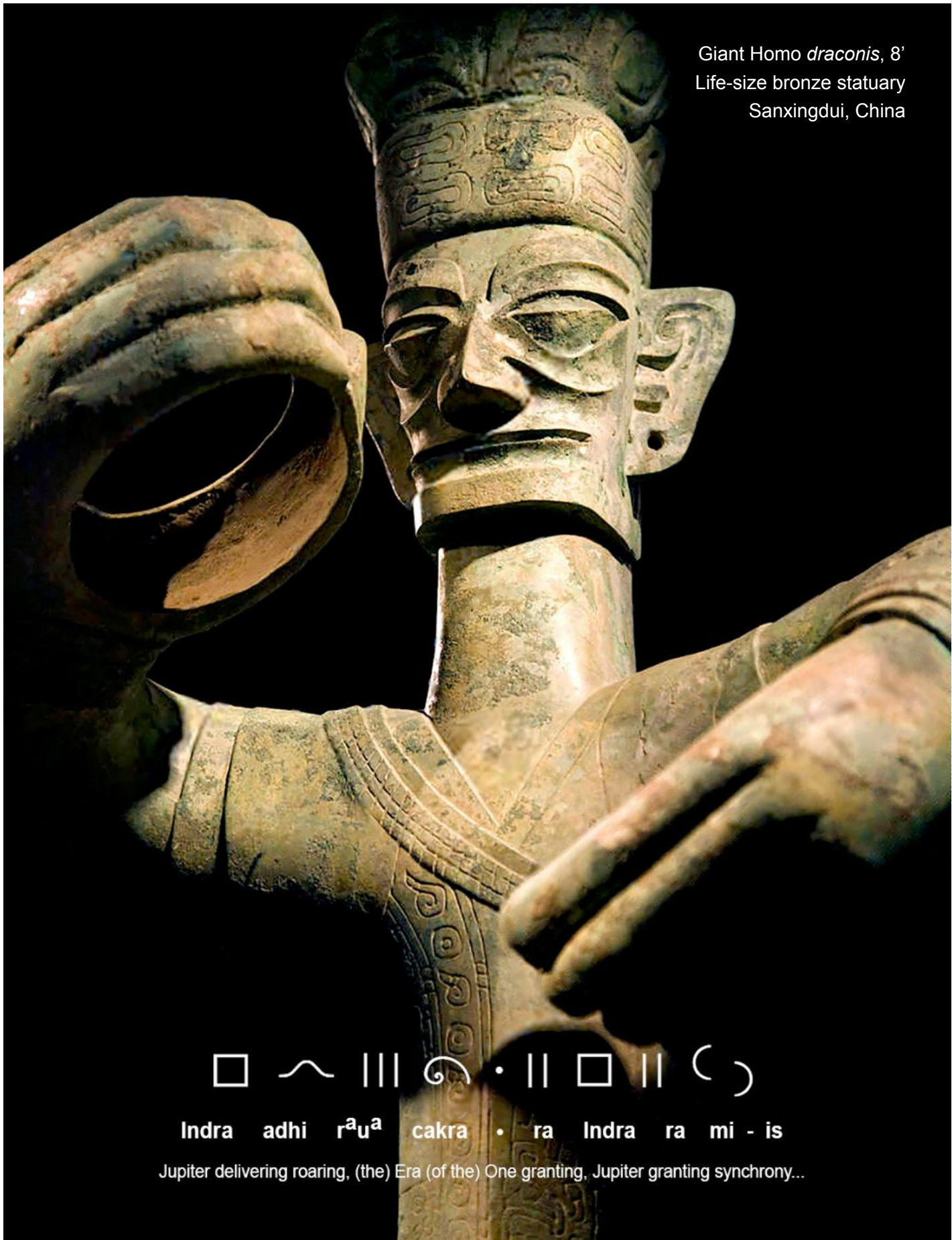


Ancient metallurgists were actually preparing Cu-As-Ni alloys by resonant transmutation of copper into nickel through basic furnace processes replicated on video by this author on an open campfire in 2018.⁶ *Nickel imparts hardness to the bronze alloy, while other trace elements enhance the acoustic properties.*

An 8-foot-tall bronze votive statue was manufactured as a life-size representation of the quantum predator *Homo draconis* bearing Paleo-Sanskrit texts reading: **Indra adhi raua cakra • ra Indra ra mi - is** , meaning “Jupiter delivering roaring, (the) Era (of the) One granting, Jupiter granting synchrony...” (overleaf).

The figure’s giant hands once held a transparent, snaking HHO plasma bulb for biophotonic qi healing practices utilizing ultraviolet-A light at the 365 nm wavelength, matching giant HHO plasma bulbs depicted in low relief on wall panels at Dendera Temple, Egypt. Elevation of the giant reptilian figure on a pedestal at Sanxingdui replicates the predatory humanoids’ intimidating stature, while providing circular fixtures for a quartz-glass vacuum tube —*electrified by the bronze arms’ transduction of focused infrasound resonance.*

Giant *Homo draconis*, 8'
Life-size bronze statuary
Sanxingdui, China



□ ~ ||| ⊙ • || □ || ()

Indra adhi r^au^a cakra • ra Indra ra mi - is

Jupiter delivering roaring, (the) Era (of the) One granting, Jupiter granting synchrony...



Facial pitting and scale ridges
Terracotta votive figurines
Yikpabongo, Ghana ~3,100bp





Life-size 3D cranial reconstruction
Giant reptilian (*Homo draconis*)
Alexander Putney, 2022

A life-size cranial reconstruction of a large, adult male specimen of the giant human species *Homo draconis* has been accomplished by this author, providing a detailed 3-dimensional model for visualizing the highly specialized predatory features of their unique cranial physiology (opposite, below).



Robust mandibles accommodate quite a large dentition, presenting a series of raised cusps on every tooth, Raised protrusions on the on the upper portion of the zygomatic arches and the lower corners of the lower mandible provide enlarged anchoring sites for very large jaw muscles, contributing to a bite force that far exceeds that of the average human.

Distinctive ridges running across the browlines and zygomatic bones of *Homo draconis* crania appear to be more emphasized in males than females, relating to thermosensory perception and their lethal bite:

The ability to sense infrared thermal radiation evolved independently in two different groups of snakes, Boidae (boas and pythons) and Crotalinae (pit vipers). What is commonly called a *pit organ* allows these animals to essentially "see" radiant heat at wavelengths between 5 and 30 μm .

The more advanced infrared sense of pit vipers allows these animals to strike prey accurately even in the absence of light, and detect warm objects from several meters away. It was previously thought that the organs evolved primarily as prey detectors, but recent evidence suggests that it may also be used in thermoregulation and predator detection, making it a more general-purpose sensory organ than was supposed.

The facial pit underwent parallel evolution in pit vipers and some boas and pythons... The electrophysiology of the structure is similar between the two lineages, but they differ in gross structural anatomy.



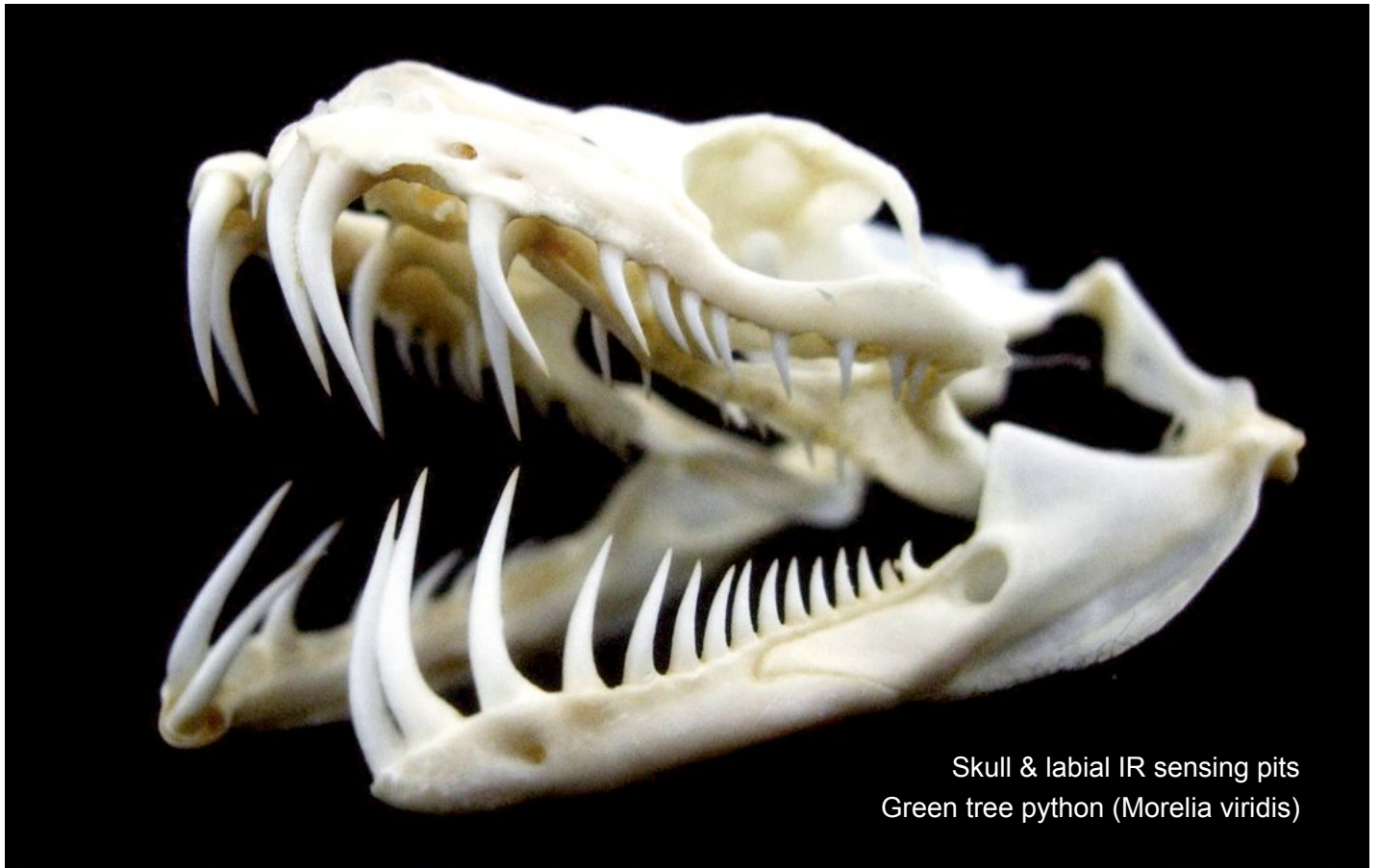
Vogel's pit viper
(*Trimeresurus vogeli*)

Most superficially, pit vipers possess one large pit organ on either side of the head, between the eye and the nostril (loreal pits), while boas and pythons have three or more comparatively smaller pits lining the upper and sometimes the lower lip, in or between the scales (labial pits). Those of the pit vipers are the more advanced, having a suspended sensory membrane as opposed to a simple pit structure.

In pit vipers, the heat pit consists of a deep pocket in the rostrum with a membrane stretched across it. Behind the membrane, an air-filled chamber provides air contact on either side of the membrane. The pit membrane is highly vascular and heavily innervated with numerous heat-sensitive receptors formed from terminal masses of the trigeminal nerve... The receptors are therefore not discrete cells, but a part of the trigeminal nerve itself.

The labial pit found in boas and pythons lacks the suspended membrane and consists more simply of a pit lined with a membrane that is similarly innervated and vascular... The purpose of the vasculature, in addition to providing oxygen to the receptor terminals, is to rapidly cool the receptors to their thermo-neutral state after being heated by thermal radiation from a stimulus.⁷

Thermosensory functioning of loreal pits observed in the skeletal physiology of the giant reptilian humanoid *Homo draconis* may likewise possess TRPA1 ion channels. This supposition can be easily confirmed by DNA analysis on various samples that can be obtained from the many available giant necromancy skull masks and intricately carved reptilian hybrid skulls exported to worldwide collections from Tibet.



Skull & labial IR sensing pits
Green tree python (*Morelia viridis*)



An electrophysiological study on the subject of loreal pit reception in western diamondback rattlesnakes reported the 'Molecular Basis of Infrared Detection by Snakes' (Gracheva *et al.*, 2010), revealing the presence of TRPA1 ion channels triggered by the stimulus of heat radiated from prey animals at <1m:

Snakes can 'see' in the dark thanks to protein channels that are activated by heat from the bodies of their prey. Vipers, pythons and boas have holes on their faces called pit organs, which contain a membrane that can detect infrared radiation from warm bodies up to one metre away...

Nerve cells in the pit organ contain an ion channel called TRPA1 –an infrared receptor that detects infrared radiation as heat, rather than as light, thus confirming theories of pit-organ function long held by behavioural ecologists. The receptors are also found inside the heads of mammals, where TRPA1 channels, also known as wasabi receptors, detect pungent irritants from mustard plants or other sources...

The pit organ contains nerve fibres known as trigeminal ganglia [or TG, illustrated above]... The team looked at the different RNAs produced by each type of nerve –an indication of which genes are active and producing proteins. They found only one, TRPA1, which was being expressed differently in the two types of ganglia, with the gene in the trigeminal ganglia producing 400 times more RNA than that in the dorsal root ganglia.



Sumatran pit viper (*Trimeresurus sumatranus*)

The pit organ is part of the snake's somatosensory system –which detects touch, temperature and pain– and does not receive signals from the eyes, confirming that snakes 'see' infrared by detecting heat, not photons of light. Infrared radiation heats up the pit membrane tissue, and TRPA1 channels open when a threshold temperature is reached, allowing ions to flow into the nerve cells and triggering an electrical signal.

The antenna membrane hangs in a hollow bony chamber, allowing for quick heat loss and maximizing the detected temperature differences between warm-blooded animals and everything else. According to the team's observations, rattlesnake TRPA1 is activated by temperatures higher than about 28°C –roughly the temperature a snake would 'feel' from a mouse or a squirrel about a metre away.⁸

The thermodynamics of pit membranes and TRPA1 ion channels are tuned to environmental conditions. Technical development of artificial thermosensory systems like bolometers have closely emulated the natural simplicity of micro-components seen in the physiology of loreal pit organs in pit viper snakes:

The pit organ of pit vipers consists of three parts: an outer chamber, an inner chamber, and a pit membrane that separates these two chambers. Terminal nerve masses (TNMs) embedded in the pit membrane serve as thermal receptors to sense the temperature change of the pit membrane. IR receptors are suspended in the pit membrane ... [helping to] decrease the heat capacity of the detection components and improve the IR detection sensitivity.

Similar configurations can be revealed when comparing the IR sensing organ of a pit viper and also a typical structure of engineered bolometer. The IR absorbing components in both systems, pit membrane in pit viper and IR absorber in bolometer, are suspended. The readout components of the temperatures of the IR absorbing components are slightly different: in pit viper, the temperature is sensed by the TNM embedded in the pit membrane through temperature-sensitive ion channels; in bolometer, the temperature is measured through the change of the electrical resistance within the thermal-sensing layer...⁹

Findings linking the TRPA1 gene with ion channels in the trigeminal ganglia of pit vipers provide molecular fingerprint also found in the giant reptilian *Homo draconis* genome. Genetic sequences conferring these specialized viperine physiological traits, including the protective coat of keratin scales covering the entire bodies of the *Homo draconis* giants, must be entirely revealed to the public for psychic protection.

In natural forest contexts, vipers rely on thermosensory pit organs for prey detection at close range and often in total darkness, to pinpoint the exact location of the target immediately before striking. In every case, pit organs are only present in *venomous snakes*, possessing venom glands within the mandibles that excrete a complex assortment of toxins that rapidly spread throughout the victim's bloodstream in minutes:



Despite this common evolutionary origin, we find considerable variation in the toxic constituents found in the venom of different snake species (Chippaux *et al*, 1991; Fry *et al*, 2008). Venoms consist of complex mixtures of proteinacious components (circa 50-200), which are commonly referred to as toxins... Consequently, variation in venom composition is observed across all taxonomic levels of snakes, between families, genera, species and even over the lifetime of an individual (Chippaux *et al*, 1991; Durban *et al*, 2013; Casewell *et al*, 2014)...

Ultimately, these variable toxin components underpin the functional bioactivity of venom. Snake venoms can be broadly classified as haemotoxic, neurotoxic or cytotoxic (World Health Organization, 2010). Many species possess multi-functional venoms that contain toxins capable of inducing different toxicities...

Snake venom haemotoxins exhibit diverse functionalities that can result in haemorrhagic, coagulopathic and/or hypotensive pathology in snakebite victims. The functional diversity of these toxins and their relative abundance in many venoms, particularly those of vipers, mean that such haemotoxins are likely to act in a synergistic manner to perturb haemostasis. While providing an effective means for the snakes to catch their prey, for example by causing ischaemic or haemorrhagic events or shock due to systemic hypotension, the consequences for human snakebite victims can also be lethal.¹⁰

The broad range of known venom components includes many toxins also secreted by the mandibular venom glands of the giant *Homo draconis*, whose advanced psycho-spiritual feeding techniques no longer require the use of venom injection by biting. *4th density methods involve skin absorption of blood products.*



Life-size 3D cranial reconstruction
Giant reptilian ET (*Homo draconis*)
Alexander Putney, 2022

Many of the same toxins found in snake venom are also present in platypus venom, which contains over 80 different toxins in 13 different classes delivered through a barb on the foot of male platypus. At least three of the toxins are unique to the platypus and the rest are strikingly similar to proteins from a variety of animals including snakes, lizards, starfish, and sea anemones, whether by 'convergent evolution' or some other process. Potentially lethal mammalian venoms include those of the shrew, known as blarina toxins.¹¹

Here we focus on gene regulatory networks associated with the production of toxins in snakes, rather than the toxins themselves. We found that overall venom gland gene expression was surprisingly well conserved when compared to salivary glands of other amniotes. We characterized the "metavenom network", a network of ~3,000 non-secreted housekeeping genes that are strongly co-expressed with the toxins, and are primarily involved in protein folding and modification.

Conserved across amniotes, this network was co-opted for venom evolution by exaptation of existing members and the recruitment of new toxin genes. For instance, starting from this common molecular foundation, Heloderma lizards, shrews, and solenodon, evolved venoms in parallel by over-expression of kallikreins, which were common in ancestral saliva and induce vasodilation when injected, causing circulatory shock.

Derived venoms, such as those of snakes, incorporated novel toxins, though still rely on hypotension for prey immobilization. These similarities suggest repeated co-option of shared molecular machinery for the evolution of oral venom in mammals and reptiles, blurring the line between truly venomous animals and their ancestors.¹²

Identification of the metavenom network of genes related to both the salivary glands and venom glands of mammals reveals their evolutionary development closely parallels those of reptile species, suggesting a genetic compatibility between the two lineages that we see merged in the giant *Homo draconis* ET species.



Fused molar roots
Alacao, Ecuador

Like many regions of ancient world, pyramid and megalithic temple-building cultures of South America were ruled by giant reptilian-human hybrid kings, whose full genomic sequences have not been publicly released due to the presence of ET nuDNA from the giant paternal ancestor. Anomalies seen in the cranial formations of these rulers include notable protrusions of the zygomatic bone and at the corners of the lower mandible, as well as deep knitting of the sutures and the presence of a small, extra plate above the occipital region that is commonly referred to by many anthropologists as the 'Inka bone'.

The most unusual cranial features of this over-sized ruling class is not readily apparent, and has not been previously identified by any anthropologist. This special feature relates to venom gland activation, and finds expression among reptilian-human hybrids as a fusion of the molar root structures. The finest example of this venom gland feature is observed in a 19 mm second molar belonging to a very tall 8th century individual excavated at Alacao, Ecuador (at left). *The fused roots facilitate venom gland activation by directly transferring bite force from the jaw to the gland.* His superb dental condition indicates high status and premature death in middle age, which is consistent with the high levels of extreme political violence prevalent during the period.

A variety of venom toxins expressed in the genomes of snakes, lizards, shrews, platypus, marine snails, starfish and sea anemones have been weaponized by the Military Industrial Complex using AI applications. The artificially engineered SARS-CoV-2 virus produces spike proteins also incorporate HIV sequence to replicate aggressive biotoxins, as well as the disease inducing agents causing cancer, rabies and prion disorder. Researchers have even discovered *superantigenic* functions of SARS-CoV-2 spike protein.¹³

These findings have been confirmed by various researchers including Dr. Bing Liu (murdered on May 5, 2020),¹⁴ Dr. Tau Baun¹⁵ and Dr. Ardis, who revealed ‘Remdesivir’ is actually *purified, lyophilized cobra venom*. This conclusion was echoed by University of Arizona researchers in a 2021 article entitled: ‘Like Venom Coursing Through the Body: Researchers Identify Mechanism Driving COVID-19 Mortality’.¹⁶

Studies of the bioweaponized ‘mRNA vaccine’ injections have also identified the presence of snake venom organoids that have been recently developed by researchers in 2022 (below).¹⁷ Genetic analysis of the SARs-CoV-2 spike protein has uncovered sequence exactly matching a Moderna patent, thereby exposing its entirely artificial origin.¹⁸



Further research in 2021 was able to successfully identify ‘Toxin-Like Peptides in Plasma, Urine and Faecal Samples from COVID-19 Patients’ (Brognia *et al.*, 2021).¹⁹ Complete genome and transcriptome data for the cobra snake was only recently published (Suryamohan *et al.*, 2020).²⁰ An abundance of damning facts confirm the basic narrative parroted by mainstream news sources is falsely contrived to hide several facts:

- Anti-venom serums contain monoclonal antibodies and polyclonal antibodies, which cure COVID-19.
- Genetic studies found COVID-19 patients possess spike proteins.
- Samples from COVID-19 patients contain peptide toxins similar to the snake venom of cobras and kraits.
- These neurotoxic peptides are responsible for paralysis experienced by COVID-19 patients, caused by blocking post-synaptic transmission via nicotinic acetylcholine receptors.
- Dr. Bing Liu was murdered on May 5, 2020 before giving a press release on his publication of important findings concerning these neurotoxic peptides similar to the venom of cobra and krait snakes.
- Dr. Liu’s research paper was never published, despite assertions to the contrary made by lead researcher Dr. Bahar immediately following Liu’s murder.

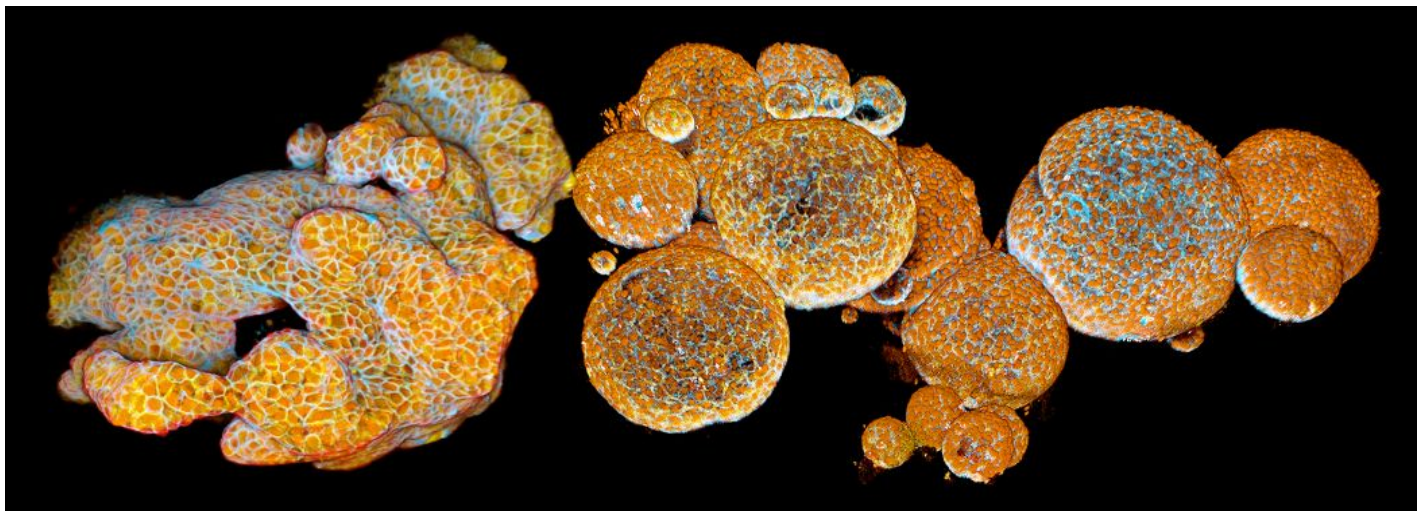
Injection of mRNA bioweapons disguised as ‘vaccines’ is, in fact, an industrial replication of the natural bioweapons of venomous snakes. The hypodermic needle closely replicates the physiology of a snake’s fang, effectively bypassing the entire immunological system to facilitate direct attack of the body’s organs.

Neurotoxic acetylcholinesterases block nicotinic acetylcholine receptors, actively disrupting nerve-impulse transmission, usually causing heart or respiratory failure.²¹ Other highly aggressive biotoxin components include phospholipase A2 (PLA2), proteases, l-amino acid oxidases, serine proteinases, metalloproteinases that rapidly destroy all living tissue on contact. PLA2 directly attacks the nervous system of the brain:

Phospholipase A2 (PLA2) disrupts biological membranes and can lead to permanent damage or even lysis (splitting or breaking of cells)... The various physiological effects of PLA2 are determined by the type of receptor to which it binds. Receptors include N- receptors (neurological- III) and M-receptors (muscular- bind only I & II). It may act pre- or post-synaptically at the neuromuscular junction by binding to acetylcholine receptors (N-receptor).

The binding of PLA2 to acetylcholine receptors block the binding of acetylcholine, which causes flaccid (limp) paralysis... Respiratory failure often accompanies the paralysis because there is likely a high affinity for PLA2 in phrenic nerve-diaphragm endplate receptors.

Proteases catalyse a series of reactions that disrupt protein peptide bonds in living tissues, causing blood-vessel wall damage, haemorrhaging and muscle-fiber deterioration. All varieties of vipers and pit vipers contain this particular type of venom. The mouse retrovirus gene *syncitin* is also found in mRNA injections, producing highly carcinogenic syncytin-1 proteins which bind cells together to form tumors.²²



There are many medicinal herbs known to effectively inhibit the destructive action of venom toxins in the body.²³ The most important herbal remedies taken in powder form for treating snakebite and COVID-19, have long been used throughout Asia: Chinese wormwood (*Artemisia annua*) or *artemisinin* concentrate, *mucuna pruriens* bean, ashwagandha root, Indian sarsaparilla root and turmeric root.

Artemisinin is a natural zinc ionophore, similar to synthetic zinc ionophores Ivermectin and hydroxy-chloroquine, which also provide strong anti-malarial and anti-COVID effects.²⁴ Supplementation of vitamins C and D₃, as well as melatonin and quercetin, have all shown beneficial effects against envenomation.

In early 2021, the President of Madagascar Andry Rajoelina exposed the WHO had offered him a 20-million-dollar bribe to have the entire *artemisia annua* crop of Madagascar *poisoned*.²⁵ False information peddled by mass media outlets aims to limit public awareness of all existing remedies, while subliminally bombarding the public mind with serpent cult branding such as '*Venom: Let the Carnage Begin*', *Luciferase* (bio-weapon component), *Venomtech* (a biotech company), *Venmo* (digital wallet) and so on. Overt disclosure of the selected method of global genocide by mass envenomation was even aired on television in '*The Blacklist*' (2016) Season 4, Episode 15, which exactly describes a krait venom bio-weapon attack.

Masonic corporate branding of this kind subliminally promotes the Satanic cult of serpent-worship, indirectly referencing the cranial physiology of the venomous humanoid species *Homo draconis*. The rapid progress of anthropological and genetic sciences brings inevitable exposure of a longstanding program of human genetic manipulation on Earth by the Baal ET consortium; *leaving nuDNA profiles at every crime scene*.



Homo *longi* (Denisovan) skull
Reptilian ET-Neanderthal hybrid
Harbin, China - 2018

The global reptilian hybridization agenda involves archaic humanoid lineages as well as modern ones. A prime example was discovered in 1933 in Harbin, China –thought to represent a new hominid species (above). The tentative species name Homo *longi* is derived from the Chinese ‘lóng’ or “dragon”; meaning “dragon man”. This name may actually find greater significance when a full genomic sequence has been established for this individual, *likely revealing the origin of this species as a reptilian ET-Neanderthal hybrid*:

The 140,000-year-old fossilised skull excavated from northeastern China belongs to a previously unknown human species –Homo Longi... The skull, which is 23 cm long and more than 15 cm wide, is larger than a modern human skull with enough room for a human brain. It consists of thick eye sockets, brow ridge, and researchers believe it belongs to a man who was about 50 years old... The man appears to have had low cheekbones and his mouth was broad, the lower jaw is missing.

The skull was first found by labourers while building a bridge over the Songhua River in Harbin as late as 1933. Back at the time, the region was governed by Japan and in a bid to safeguard it from falling into Japanese hands, the Chinese labourers wrapped it and hid it in a well, where it remained for over 90 years... Once found by the family [in 2018], the fossil was donated to the Geoscience Museum of Hebei GEO University. The team of researchers then conducted a geochemical analysis of the skull and dated it to at least 146,000 years old.²⁶

These findings pose an interesting question: *is the Harbin cranium a Denisovan or Homo longi?* Genetic sequencing of the find will provide definitive evidence of both maternal and paternal DNA heritage.



The skull has a wide face with small, flat cheekbones, set underneath the dome of the skull... Large eye sockets sit beneath heavy, curving brow ridges. The braincase is as large as a modern person's, but it's long and low rather than high and round. The jaw once held large molars that look like they belong to an older member of our family tree –or a Denisovan.

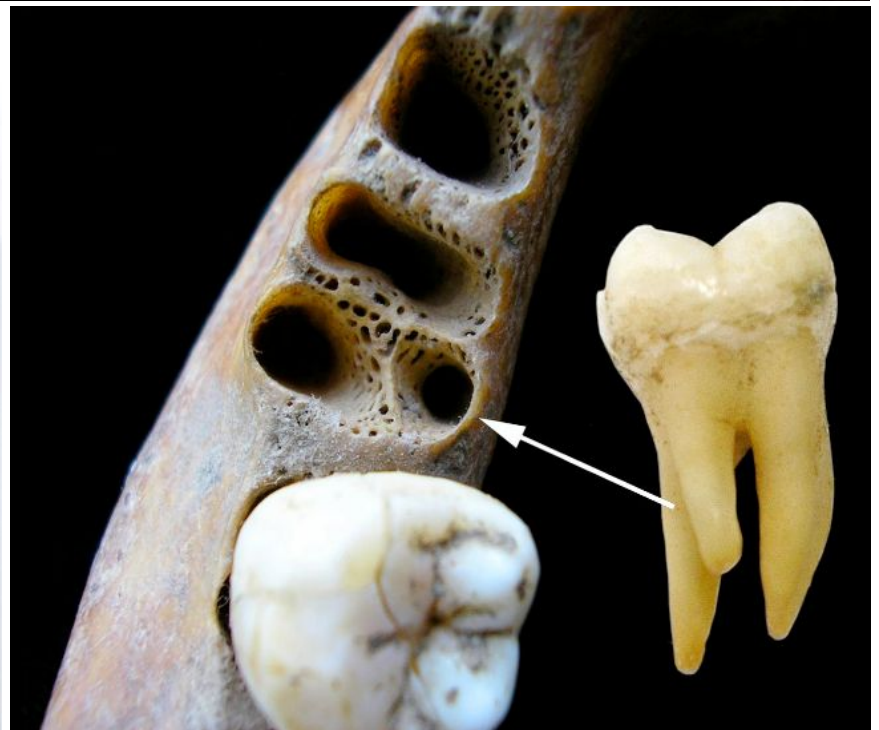
When Ni and colleagues did their statistical analysis, they pointed out that the Harbin skull fell into a group along with , which anthropologists identified based on proteins still preserved within it. In other words, Harbin and Xiahe probably belong to the same species or to closely related species. Meanwhile, the one molar still attached to the Harbin skull looks remarkably like two Denisovan molars from Denisova Cave in Siberia.

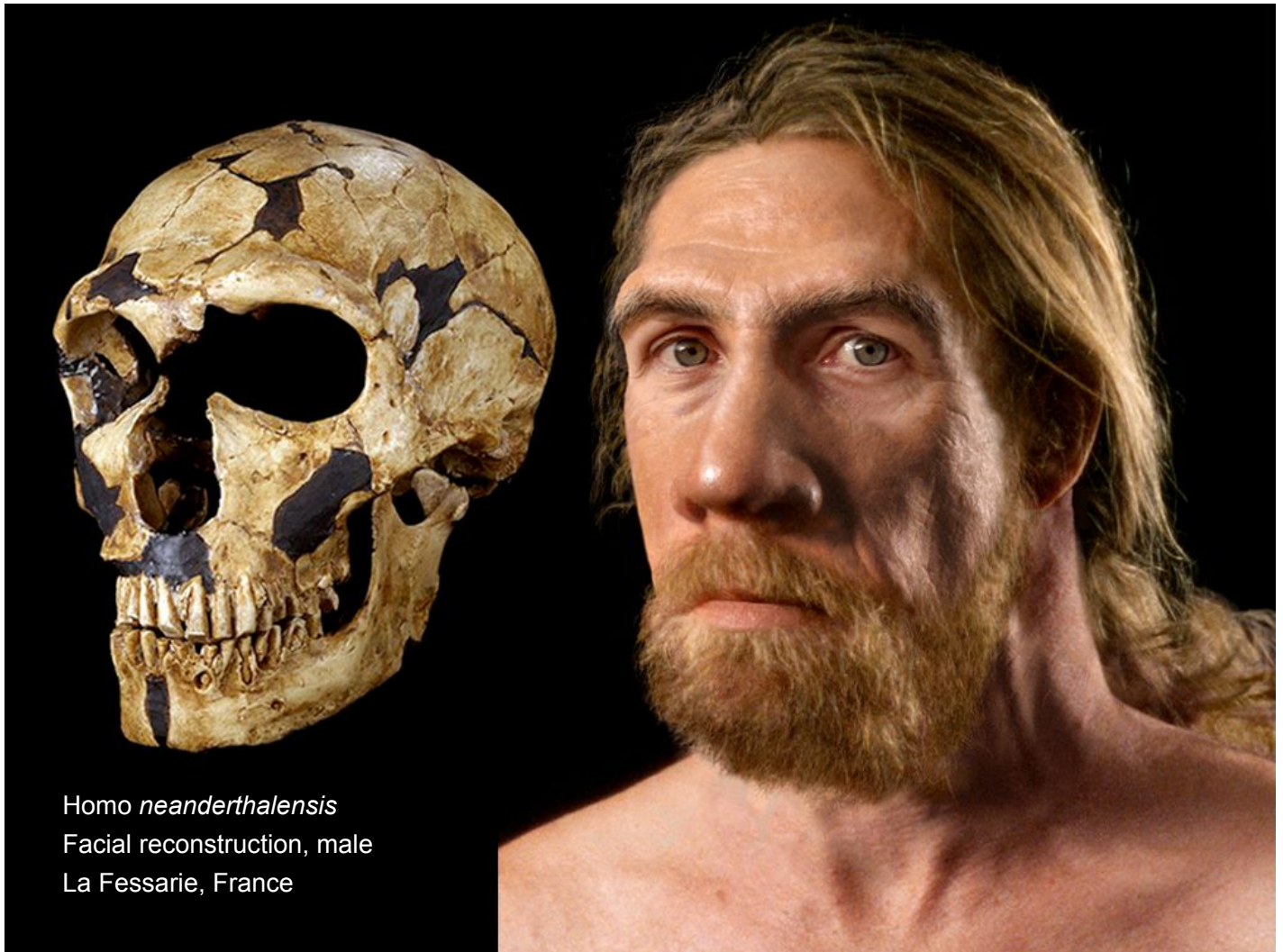
The [146,000-year-old] Harbin skull also fits in well with a 200,000-to-260,000-year-old skull found in Dali County in northwestern China, a roughly 300,000-year-old skull found in Hualong Cave in eastern China, and a 260,000-year-old skull from Jinniushi (sometimes spelled Jinniushan) Cave in China...²⁷

Homo *longi* shares several morphological characteristics observed in various other hominid crania dated to the extended period from 315,000-60,000 years ago, including the Kabwe, Bodo skulls, as well as the Herto, Ethiopia cranium (overleaf). Mandible fragments from the Herto skull show partly fused molar root structures that represent distinctive evidence of ET hybridization of Homo *neandethalensis* with the giant reptilian Homo *draconis*. The Herto molar and its socket in the lower jaw present 3 roots instead of 4, resulting from nuDNA inherited from a giant Homo *draconis* paternal ancestor with completely fused molar root structures.



Homo longi, cranium
Herto, Ethiopia





Side-by-side comparison of the morphological characteristics of *Homo neanderthalensis* (3D reconstruction above) with those of *Homo longi* reveals significant structural differences that can be traced back to a program of advanced genetic engineering involving interspecies hybridization. The brow ridge and mandible of Neanderthals are more robust than the average human skull, nonetheless appear gracile when compared with the powerful jaw muscles and strong cranial features exhibited by the *Homo longi* hybrid species.

Our rapidly growing knowledge of the Neanderthal genome reveals the exact percentage of genes found in living humans today that have been inherited from distant Neanderthal ancestors. Related genome studies will soon elucidate exact percentages for genes among living individuals that were inherited from ancestors that belonged to the *Homo longi* (or 'Denisovan') group. However, the genetic relationship between *Homo neanderthalensis* and *Homo longi* is far more complex, and requires comparison with ET genetic material.

The special dynamic of interspecies hybridization was established by the 5-year *Bigfoot Project* in the case of the giant, hairy sasquatch predators (Ketchum, *et al.*, 2013), and the same general pattern applies to the *Homo longi* genome that has not yet been reported by any researcher groups. To be specific, the genome of *Homo longi* will present highly unusual results, finally revealing mtDNA sequences inherited from a Neanderthal mother and nuDNA inherited from the giant reptilian ET humanoid species: *Homo draconis*.

For this reason the same barrage of disinformation and mass media subterfuge will be promulgated to limit public information to mtDNA results, yet withholding the nuDNA sequencing results and denying the existence of their ET origin. These reprehensible obfuscation tactics have been employed for many decades to suppress the hybrid ET origins of the mummies of the Pharaohs of Egypt and the giants of Paracas, Peru, whose nuDNA results and blood type studies have likewise been completely withheld from publication.

Eyes of the giant reptilian humanoid species *Homo draconis* are typical of predatory species, possessing a vertical pupil of the same type seen in crocodiles, alligators and snakes. Accordingly, the large eyes of *Homo draconis* possess the same nictitating membrane observed in alligators, snakes and birds.

The eyes of the giant *Homo draconis* are usually protected from harmful rays of light by dark lenses that cover the entire eye, just as observed in the 1947 US Army documentary video of the dissection of the eyes of the grey hybrid android, previously identified by this author as *Homo sapiens oculus*.²⁸

What is the primary physiological function of the many horned bone protrusions observed in mature adult male giant *Homo draconis* that are not seen in juvenile males of the same extraterrestrial species? A coherent answer to this question is provided by the closely related findings of paleontologists investigating the function of distinctive protuberances on the skulls of various dinosaur species.

In 2010, Paleontologist Jack Horner convincingly demonstrated that, like the large colorful casques of the beaks of living birds such as cassowaries, hornbills and toucans, the porosity of dinosaur bone enabled the extreme remodeling of cranial features of dinosaurs throughout life phases.



The scruffy feathers, undeveloped casque and dull beak coloration of juvenile great hornbills is immediately discernable from mature adults of the species, which can also be easily differentiated from each other by the black coloration around the eyes and on the casques of males that are absent in females (above).

Horner's investigation of relative skull growth in contemporary dinosaur species –a technique known as *allometric cranial ontogeny*– has eliminated various species from the widely accepted dinosaur phylogeny by removing redundancy in species' identification according to observable growth phase continuities.

Age determination for individual dinosaur specimens is revealed by the degree of bone porosity, providing the ultimate proof for Horner's controversial reclassifications. By placing a series of similar specimens in sequential order according to size and bone density, Horner's research team demonstrates the continuity of allometric cranial ontogeny for Triceratops, Pachycephalosaurus, Edmontosaurus and Tyrannosaurus.

Horner's insights have exposed the fragmentation of traditional species classification systems, critically redefining dramatic morphological changes observed sequentially among specimens of infant, juvenile, sub-adult and mature adult individuals excavated from the same strata (*'Dinosaurs Decoded'*, 2010)²⁹:

To Horner's colleagues, his theory comes as a shock. Could three different looking species [actually] be one? ... It's the strong genetic relationship that makes Horner think that birds must still preserve many aspects of dinosaurs' appearance and behavior... Now, to finally solve the mystery of why dinosaurs' looked so different at each stage of life, Horner will study birds, and what he discovers will revolutionize our understanding of dinosaurs...

The investigators look for answers in dinosaurs' descendants: birds. The first breakthrough comes with the observation that birds may have evolved distinctive features to distinguish themselves from related species... Some species may distinguish themselves not just with colors, but with display ornaments on their skulls like this hornbill... It may reveal a key to the mystery.

[Horner conveys this basic premise with a simple observation:] "The hornbills have the casque on their head that is certainly a feature very similar to what we see in dinosaurs. Most of dinosaurs' visual display was done in bone." One reason dinosaurs may have developed strangely shaped skulls and horns was just to recognize their own kind. But why did the youngsters look so different from adults?

It appears that young birds also have distinctive looks. [Horner explains,] "As you can see with the juvenile hornbill, the casque on its head is actually not fully grown." A younger hornbill has a baby look, with no casque at all until it's three-quarters adult size. Then the casque quickly begins to grow. "It's a signaling device. It's a way so that the adults can recognize the juveniles and the babies, and the babies can recognize the juveniles and the adults"...



Tyrannosaurus rex
Mature adult male - 12 teeth
Late Cretaceous - 67 mya

At last, Horner believes he is cracking the code of dinosaur appearances. Like birds, many dinosaurs' strangest looking features were solely for visual communication... The adults' strangest looking features were mate magnets. At each stage of life, horned- and dome-headed dinosaurs may have looked different, but the scientists are about to discover greater surprises when the investigate T-rex...

[Comparative morphological analysis of Tyrannosaurus skulls of various ages revealed the animal naturally lost teeth as it aged, with young possessing 17 teeth on each side of the skull and mature adults possessing only 12. In addition, gnarled boney growths appear atop the Tyrannosuarus' skull ridges at adulthood and continue to grow throughout the life of the individual.]

Horner believes that while the growth [rate] of the oldest dinosaurs slowed down, they never fully stopped growing [just as observed among reptile species today, such as alligators]... If Horner is right, as they grew older and bigger, their faces grew even gnarlier. Their skull features never stopped changing."

The groundbreaking findings of paleontologist Jack Horner reveal continual growth of boney protrusions observed along the raised ridges of the skulls of the largest mature adult Tyrannosaurus rex individuals primarily served in visual signaling of dominance between rival males.

As observed in modern animals such as giraffes, evenly matched Tyrannosaur males often engaged in potentially lethal combat over mating rights by sideways head-tossing, using raised boney protuberances to strike at the head, neck and flanks of the opponent until submission. Gnarled boney growths over the brow regions of mature adult male Tyrannosaurs protected their eyes from impacts during head-to-head mortal combat with mating rivals and prey animals.

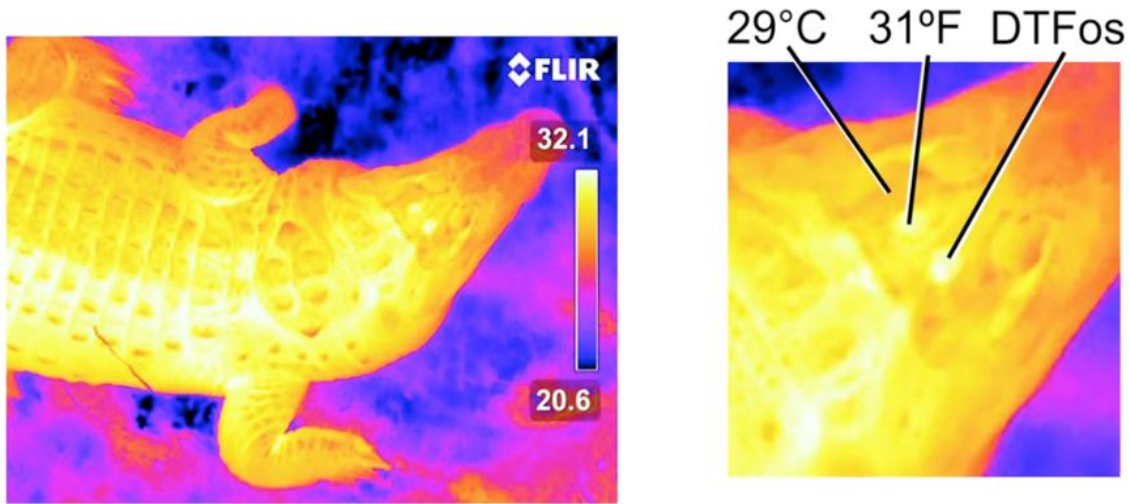


In stark contrast to growth phases that terminate at adulthood among placental mammal species like human beings, the continual growth of reptilian species throughout their lifecycle allows field biologists to more easily estimate the age of reptiles in the wild, such as lizards, snakes, alligators or crocodiles.

For this same reason, the reptilian physiology of the giant humanoid *Homo draconis* enables relative age determinations based on size. Just as observed among alligator species, *Homo draconis* females tend to be larger than male individuals of the same age –as noted of the previously described intact female and male skeletons preserved in burial pits within Johnson Cave, near the present-day town of Kanap, Utah.

Another special anatomical feature seen in Tyrannosaurs, and other theropod dinosaurs to a lesser extent, has only recently been recognized as a key thermoregulation feature recognized by biologists and paleontologists in 2018. Highly vascularized areas of cancellous bone located at dorsal prominences on the skulls of cold-blooded reptile species provide exposure of blood to the warming influence of the sun.

Blood capillaries beneath the skin are warmed through small 'window' features called *frontopareital fossa* (FPF), located directly in front of *dorsotemporal fenestra* observed in skulls of extinct theropod dinosaurs.³⁰ These fossa are conserved among most living reptiles species including lizards, alligators and crocodiles, showing complex vascular networks that facilitate amphibious thermoregulation in aquatic environments by localized cranial heating –allowing the rest of the body to remain submerged below colder waters.



Researchers supported this hypothesis with infrared imaging of the relative skin temperatures of live alligators, showing significantly elevated temperatures of the skin covering the frontopareital fossa due to increased surface bloodflow through those highly vascularized areas (above). Blood capillaries concentrated in brow protrusions of the forehead of *Homo draconis* likewise represent reptilian thermoregulation features that are not observed in placental mammalian humanoids such as ourselves.

The giant *Homo draconis* ET humanoid species is a viviparous or placental reptilian, as seen among many reptiles (i.e. pit vipers, boas, sea snakes, skinks, etc...).³¹ Ancient sculptural imagery attributed to the Ubaid culture excavated in modern-day Syria represent giant reptilian humanoid females holding infants to their pointed breasts, indicating *Homo draconis* females do not lay eggs, but bear live young like viper species.



The presence of venom glands in the jaws of reptile species such as pit vipers is also shared among monitor lizards and komodo dragons, displaying similar predatory features as those seen in *Homo draconis*. These shared reptilian predatory characteristics may represent a psychological factor in the terror tactics employed by *Homo draconis* against human communities, which include the releases of giant komodo dragons in various desolate regions of Queensland, in northeastern Australia.

Known as *Megalania* from the paleontological context of the Pleistocene epoch (overleaf), these monsters have been reported by multiple eyewitnesses in sparsely populated areas. Terrifying sightings of the giant predatory 'burrunjor' have also taken place in various regions of Queensland, with many detailed eyewitness descriptions from past decades corresponding very closely to extinct dinosaur species classified by paleontologists today as theropods (such as *Tyrannosaurus rex*, *Dromaeosaurus* and *Velociraptor*).³²



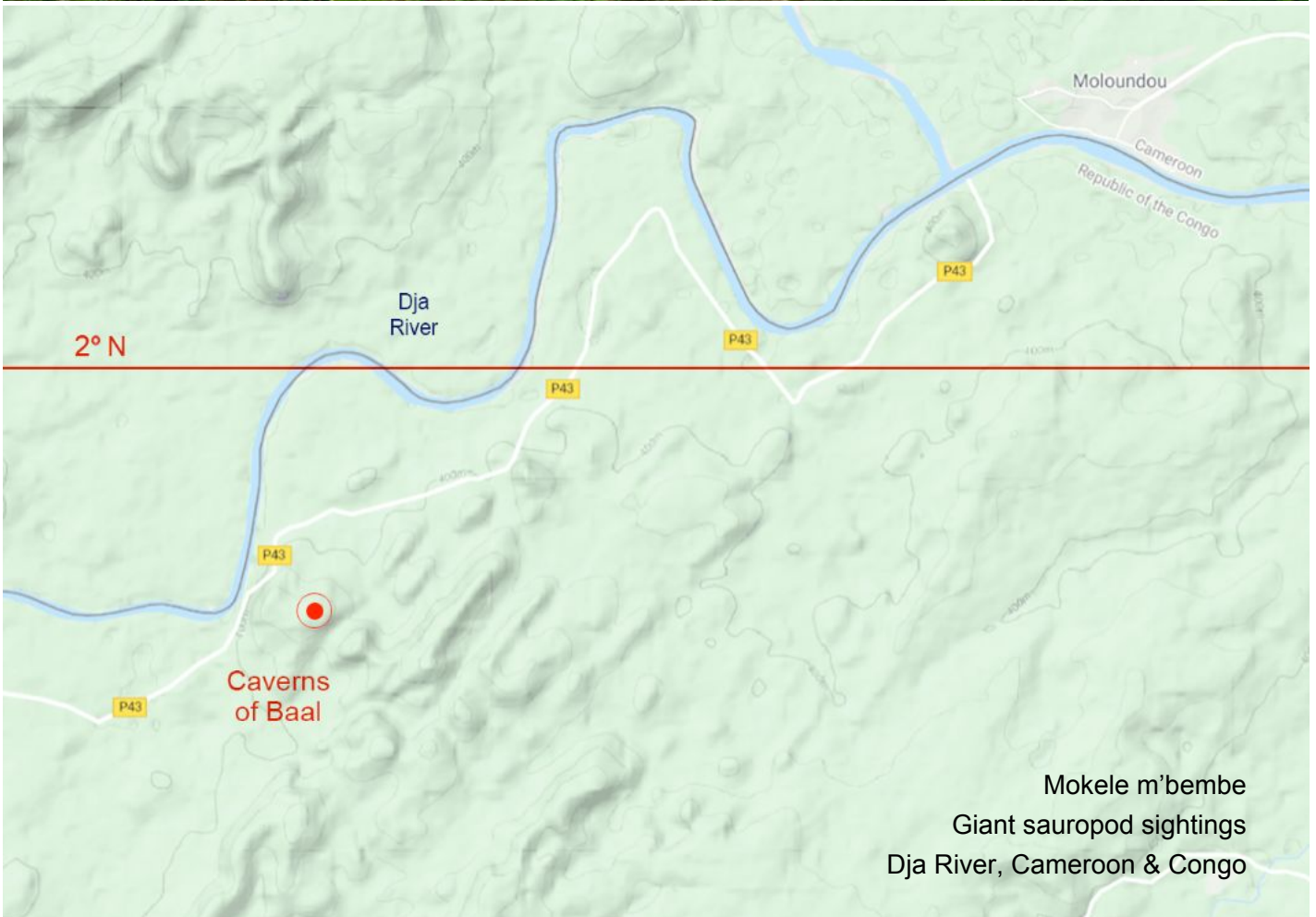
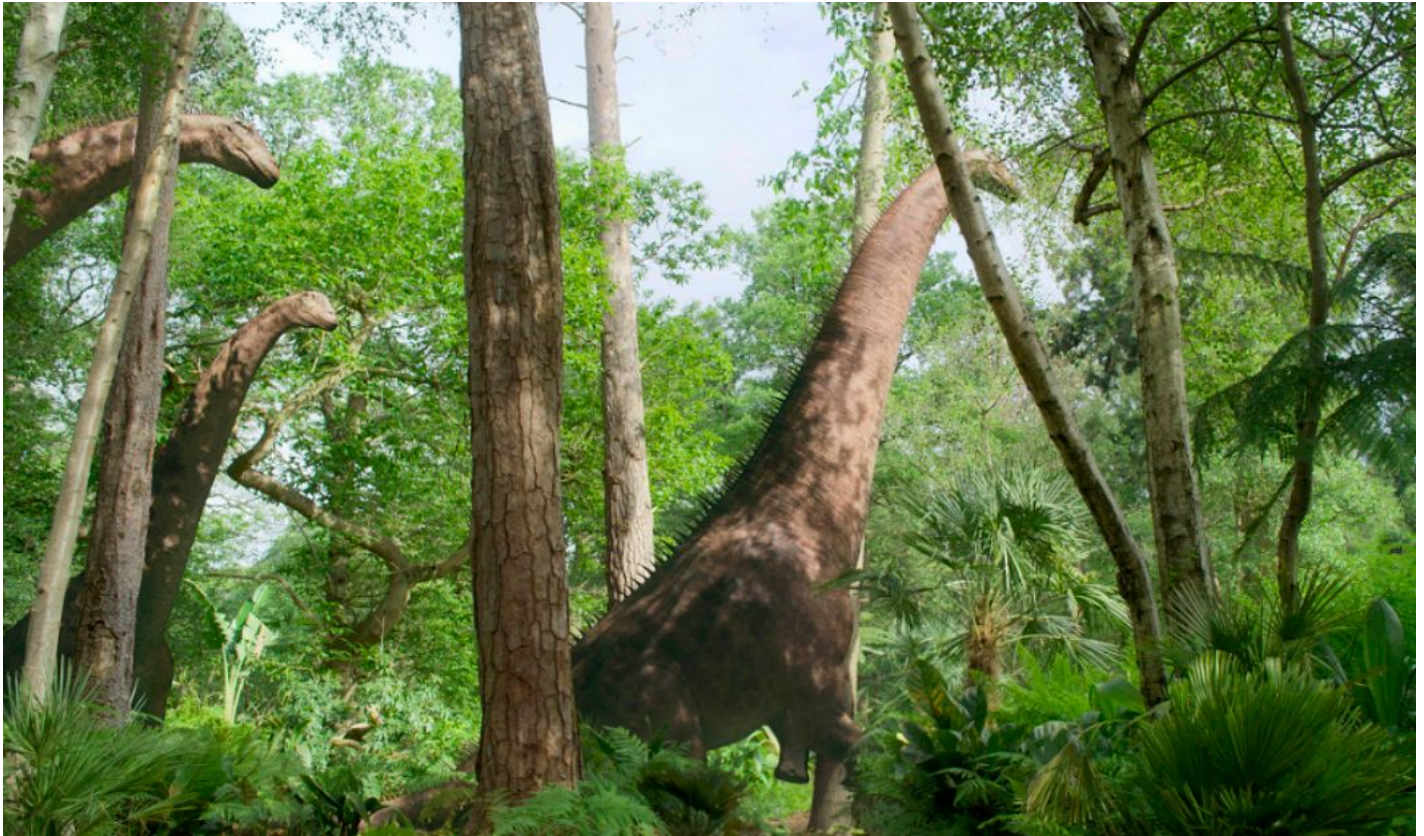
Burrunjor
Velociraptor sightings
Queensland, Australia

Arnhem Land, in Australia's Northern Territory of Australia, has a very sparse human population and high occurrence of burrunjor sightings, with reliable reports made from 1950-1982 by many trustworthy sources including expert Aboriginal trackers working directly with mounted policemen. Prominent burrunjor sightings were made at Burketown, Lagoon Creek, Cloncurry, Mount Isa, Urupuji, Floraville and the Normanton district.

Similar megafauna terror tactics of the quantum predator *Homo draconis* have disturbed the residents of Moloundou, Cameroon, who report occasional sightings of a giant herbivorous sauropod dinosaur locally named 'mokele m'bembe', in association with unexplained disappearances of villagers over the years.

Situated 7 miles from Moloundou, Cameroon near the Dja River, (1.9788°N, 15.12382°E, opposite) the Caverns of Baal are 2,193 miles from the Great Pyramid; comprising 8.81% of Earth's mean circumference. Placement at 2° North latitude confirms the mandala network alignment of this ancient subterranean site.

Guerilla military activity that has overtaken this particular border region of Cameroon and the Republic of the Congo is orchestrated as a convenient cover used by CIA strategists to control the zone surrounding the Caverns of Baal, where covert military operations and satellite surveillance have recorded significant activity of UFO sightings, human abductions, mutilations and giant sauropod dinosaurs over the last few decades.



A gargantuan series of subterranean caverns extending far below this area is the home of another giant predator that stalks humans in the area. Not far southeast of the Caverns of Baal and the mokele m'bembe sightings is the Katanga region, where a giant snake sighting was made in 1959 from an aerial perspective:

In 1959, Remy Van Lierde served as a Colonel in the Belgian Air Force at the Kamina airbase in Belgian occupied Congo. In the Katanga region of the Democratic Republic of the Congo, returning from a mission by helicopter, he reported having seen an enormous snake as he flew over the forests.



Titanoboa photograph. 1959
R. Van Lierde, DR Congo

Van Lierde described the snake as being close to 50 feet in length, with a 2' wide by 3' long triangular head, which, if his estimations were accurate, would earn the creature a place amongst the largest snakes to have ever existed. Colonel Van Lierde described the snake as having dark green and brown top scales and a white-
ish colored underside. The photo was later analyzed and verified to be genuine.

Upon sighting the reptile, he had the pilot turn around and make another pass at which the serpent reared up the frontal ten feet of its body head as if to strike, giving him the opportunity to observe its white underbelly. However, after flying so low that Van Lierde believed it to have been within striking distance of his helicopter, he ordered the pilot to resume his journey, and so the creature was never properly documented...³³

The estimated size of this giant snake, as well as its great girth, exactly correspond to the physiology of *Titanoboa*; a 50'-long boa constrictor species weighing 2,500 lbs (1134 kg) that lived 60 million years ago, excavated at Colombia's Cerrejón coal mine in 2003. Despite the fact this colossal species of giant snake went extinct tens of millions of years ago, *breeding populations are maintained underground by the Baal.*

Similar events have even occurred in the US, according to a news report from the Cincinnati Commercial Gazette of September 2, 1886, detailing a giant snake encounter in Butler, Ohio. It was accompanied by an odd 'whirring' sound indicating the presence of an invisible aerial object remotely controlling the snake:

Butler, Ohio - Butler, Ohio has been in a feverish state of agitation since last Sunday, by the report of a monster snake that has been seen in the immediate vicinity. Last Sunday Nick Corbin, one of the oldest and most esteemed citizens—and whose veracity is unquestioned—went about a mile out of town in search of a lost pig.

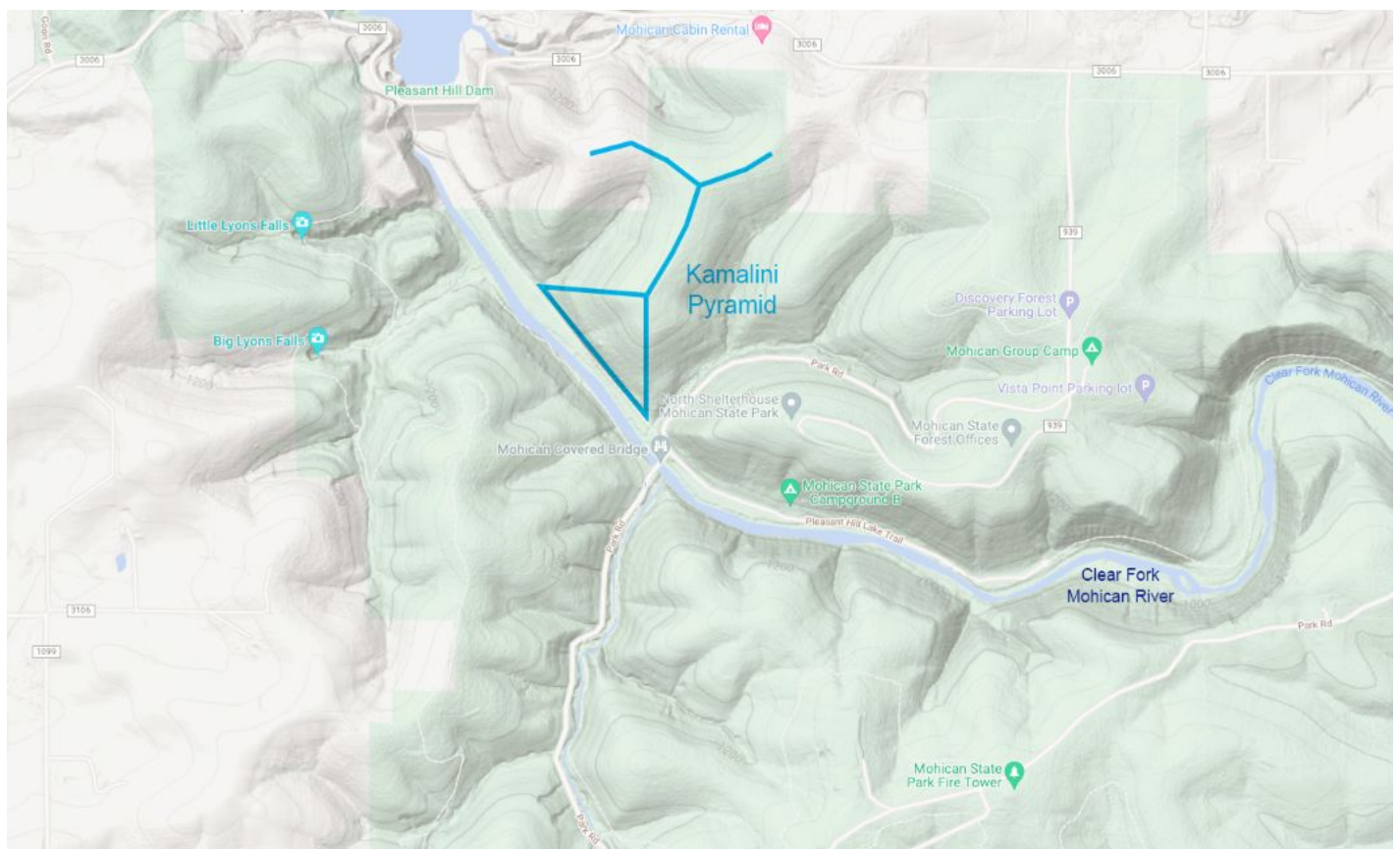
And as he was passing through a thicket of blackberry bushes, his attracted by some cattle that were rushing frantically toward the river. And on searching for the cause of the strange action of the cattle, his attention was called to a whirring noise that in the bushes behind him.

And on looking around was almost paralyzed by the sight of an immense monster of the snake species. It was of a dark brown color with a flat head, and at least 25 feet long. It was standing with its head about 10 feet from the ground, waving waving from one side to the other in an excited manner.

Corbin suddenly thought of some business in town that needed his attention. He succeeded in getting away without attracting the monster's attention, and with all the speed he could command he rushed to Butler and spread the report. And the people, having the utmost confidence in his veracity, armed themselves with guns, clubs and other weapons, and when handy at about 4pm and about 75 men started for the place where the snake had been seen.

The place was surrounded, and with the utmost precaution led my Uncle Nick, the men gradually closed in—but [found] no snake. But there was an unmistakable sign of its having been there a short time before. And after searching for a short time, a trail which looked as if a log had been drawn on the ground, was found leaning towards the Ohio River.

Several men followed the trail 'til dark set in, and then returned to town. It is thought by a great many to be the snake so often seen by the residents of Moscow, Ohio, as a trail led in that direction. The excitement has not been subsided, and berries are going to be wasted in the community.³⁴



Kamalini Pyramid on the Clear Fork Mohican River, Ohio (40.6194°N, 82.31586°W, above) is located 5,979 miles from the Great Pyramid, representing 24.02% of the Earth's mean circumference ($\frac{6}{25}$). This site is situated 4 miles from Butler, Ohio giant snake encounter with a 'whirring' UFO hovering above it.

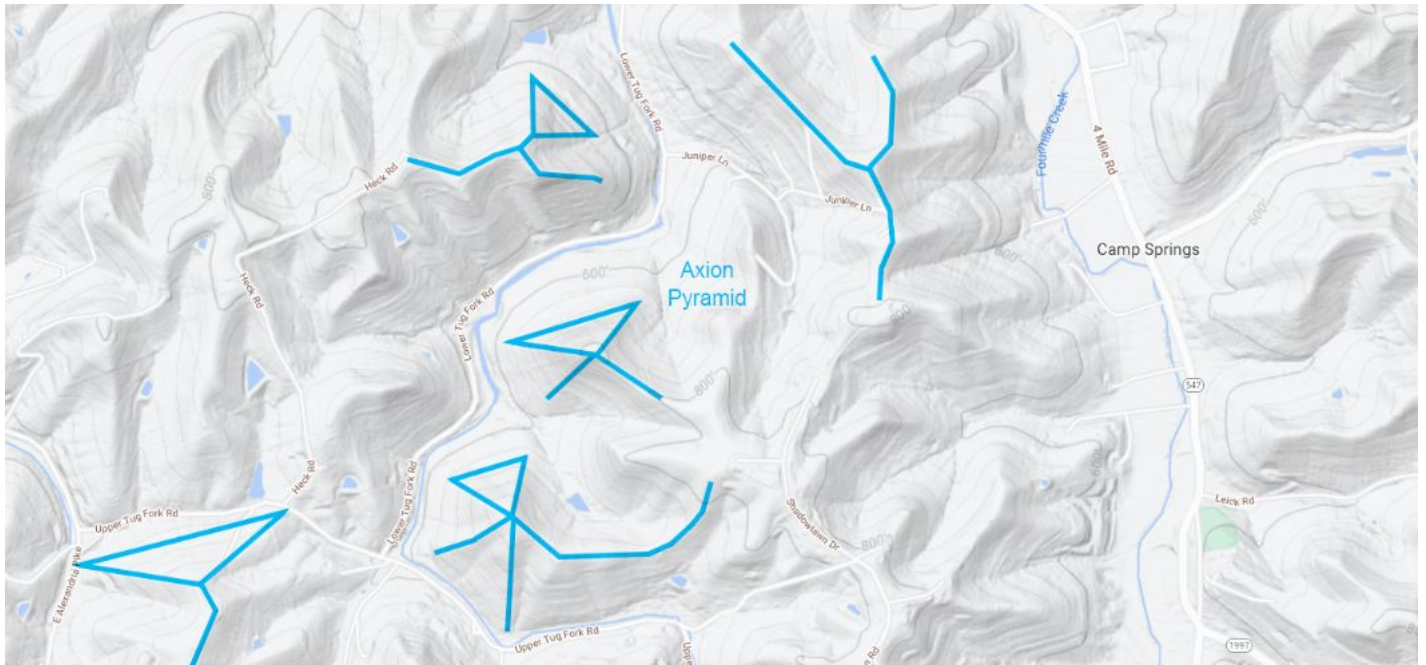
Sandstone bedrock formations have been augmented with artificial features still visible at various locations in the area. Another cluster of refaçaded mountain pyramids can be found on the Ohio River at New Richmond (38.9401861°N, 84.2845687°W) and Moscow (38.830293°N, 84.212865°W), where giant snake sightings were associated with spooked cattle, aerial whirring sounds and missing livestock—according to a September 2, 1886 article in the Cincinnati Commercial Gazette.



The exposed remains of a geopolymer sandstone platform are found on the Doan River in northern Ohio, to the west of the Clear Fork Mohican River. Rectangular pavement blocks can be seen extending into the small river below embankments composed of flowing geopolymer sandstone (above). Sandstone bedrock gives way to limestone formations that extend below the southern portion of the state.

Limestone quarries near the Ohio River presents debris piles of orange metakaolin geopolymer cements (below) that confirm the artificial origin of many limestone temple structures in the vicinity of Moscow, Ohio.





Axion Pyramid near Camp Springs, Kentucky (38.9999684°N, 84.3810891°W, above) is located 6,134 miles from the Great Pyramid, comprising 24.64% of Earth's mean circumference ($^{123}/_{500}$). Exact placement at 39° North latitude ensures excellent infrasound standing wave resonance focused by the Orion Pyramid Complex.

Limestone bedrock has been reconstituted as artificial limestone temple structures featuring interconnecting ridgeline walkways with geometric configurations that are partly preserved to this day. Microscopic analysis of stone fragments from the area can be compared to determine which, if any, may have been cast as geopolymer construction materials. Use of orange kaolin-based geopolymer cements and other metal-loaded binding materials in walkway pavements facilitates their identification by color contrast and density.

Several ancient pyramids are also evident on the west bank of the Ohio River to the south of the Axion Pyramid, forming a southern extension of the same underground city complex built into limestone (below).



Extensive physical evidence also indicates advanced time-travel missions have been undertaken by the Baal forces to collect dangerous megafauna species from various epochs of Earth's past that are used to terrorize and distract human communities *while they prey on the most vulnerable, especially our children.*

Despite the fact that these monstrous creatures display entirely unnatural behaviors and supernatural characteristics that include glowing red eyes, the physical reality of these creatures has been confirmed on many occasions. Sightings of giant wolves with glowing red eyes reported at Skinwalker Ranch near Ballard, Utah and elsewhere in North America have been accompanied by finds of the fresh remains of giant wolf-like skulls, apparently belonging to a dire wolf raised on growth-stimulating hormones (below).³⁵



Dire wolf skull, male
Hormonal overgrowth
Canus dirus (extant)

Another sacred mountain notorious for unexplained disappearances and encounters with giant predatory cryptids possessing large, red glowing eyes is Mount Nyangani, in present-day Zimbabwe, where towering dolerite cliffs rise to a summit at 8,504' (2,592 m). Locals advise hikers to ignore apparitions of giant colorful snakes, a smouldering clay pot or a brick of gold –*which are often used to lure hikers away from a group.*

Recurring deaths and disappearances on Mount Nyangani include several recent cases.³⁶ On April 10, 2020, two children died of hypothermia after sudden onset of fog and hail while searching for a missing cow with a relative named Shingirai Matsiwa. In August of 2014, 20-year-old British student Thomas Gaisford also became trapped on the mountain by the sudden onset of thick fog and heavy rain, *but survived to give an account of being stalked by giant, colorful snakes and various large predators with glowing red eyes.*

Months prior, on January 4, 2014, Indian tourist Zayd Dada vanished under similar circumstances after separating from his group to summit Mount Nyangani alone. No trace of Zayd was ever found. In 1984, 8-year-old Robert Akherst disappeared from his school group at the site. In 1981, the two young teenage daughters of former government official Tichaendepi Masaya vanished from their group without a trace.

Mount Nyangani, Zimbabwe (18.2967°S, 32.84°E) is located 3,321 miles from the Great Pyramid of present-day Giza, Egypt, representing 13.34% of Earth's mean circumference (²/₁₅). These continual unexplained disappearances of hikers on the mountain reveal the presence of an ancient subterranean base of covert predatory operations of the Baal consortium, powered by infrasound resonance focused by the pyramids.

Cryptid accounts are also retold among local inhabitants of the Nahanni Mountains of Canada's Northwest Territories. Members of the Dene tribe identify two different types of giant humanoids as agile, ferocious adversaries who occupied the high mountains. These giants were known as separate groups to be avoided at all costs, both of which occupied large cave systems hewn into the bedrock of the mountains long ago.

'Nakani' is the traditional Dene name for giant, hairy Sasquatch hybrids known by countless native traditions throughout the world; their presence always associated with a foul stench. They are known to emerge from hidden caves to hunt during the night during the snow-free periods of the year. It had long been assumed these giants retreated deeper into their cave dwellings during the months of winter deep-freeze for safety.

Svarrakta Pyramid Complex S Nahanni River, NT Canada



While the hairy Nakani giants represented a mortal enemy of the Dene people, the name of the Nahanni River and its valley referenced the zone as a territory of the fearsome 'Naha' tribe; giant, white-skinned Nephilim hybrids who wore thick animal furs and were able to throw hunting spears great distances using bone 'atlatl' spear-throwers that were far superior to the traditional weapons of the Dene.

In the 1830s, a party of fur traders encountered the large, white-skinned Nahanni Tribe and would have been slaughtered without the intercession of the female leader of the tribe, a fair-skinned Chieftess who became well known throughout the region after that time as the 'White Queen'.³⁷ While no other encounters with the Naha were reported thereafter, *a decree of covert co-existence still holds to this day.*

The early 1900s disappearance of brothers Willie and Frank McLeod while gold prospecting along the South Nahanni River began a series of atrocious murders in the area that could only have been executed by the hairy Nakani giants. After several days of tracking the brothers' trail, searchers found their headless remains on a sandbar where they would be easily seen, as if to warn all other gold miners to stay away.

The zone of these killings became known as 'Deadman's Valley', and became famous for more than 30 documented murders by decapitation that were to occur there over the next decades, with any cabins that were ever built having been burned to the ground, their occupants beheaded or missing altogether.



Notorious serial murders befell most pioneers and gold-prospectors who ignored stark warnings issued by local Dene tribe members –and their longstanding avoidance of the region due to the aggressive territorial behavior of giant humanoid predators possessing great size, strength, endurance, stealth and cunning. Dene Elders shared ancient knowledge that these predators occupied extensive cavern systems hewn into the bedrock.

Stacked remains of geopolymer limestone platforms bound by orange meta-kaolin-based cement are strewn across the promontories of Sunblood Mountain (above), situated high above Virginia Falls where extensive sections of geopolymer limestone platforms run on both sides of the South Nahanni River for miles.



Svarrakta Pyramid Complex
Geopolymer limestone tiles
S Nahanni River, NT Canada

Svarrakta Pyramid Complex, on the South Nahanni River, Northwest Territories, Canada (61.6344549°N, 125.7316497°W, above) is located 5,990 miles from the Great Pyramid of present-day Giza, Egypt. This resonant distance interval corresponds to 24.06% of Earth's mean circumference ($\frac{6}{25}$), facilitating efficient reception within a nodal point of focused infrasound standing wave resonance.

Another major Paleo-Sanskrit pyramid complex has also been identified to the southeast of the Nahanni Valley, in an adjacent hidden valley oasis with misty hot springs visited by giant Pleistocene megafauna:

[A 1922] article entitled "An Oasis in the Arctic" [described]... a strange find made by prospectors Hank Russell and Jack Lee.... [who had] spied a green valley far below, partially obscured by the mist. Determined to investigate this geological anomaly, they descended into the area. Dressed as they were in heavy, fur-lined parkas, Russell and Lee found the valley uncomfortably warm... Naturally, the valley attracted huge populations of wildlife... [as well as] a more mysterious valley denizen; around the lake were strange, perfectly round tracks 18 inches in diameter, which bore 3 toe-like depressions in the front... [Despite strong skepticism from many sources,] "the prospectors would have sworn the tracks to be those of a mastodon or mammoth."

[In a] July 25, 1924 issue of the Alaska Weekly, [an article entitled]... "Winter in Paradise"... detailed the testimony of an American military man named Captain Samuel C. Scotte... [who'd] spent two winters in a tropical vale tucked away somewhere in... northern BC- this valley was purportedly 20 miles (32 km) long and 3-4 miles (5-6 km) wide.

"The valley is swampy," said Scotte, "with many small lakes and timbered flats. The soil is a rich, black loam" well-suited to growing vegetables. Captain Scotte believed that the valley owed its balmy climate to hot springs situated in the nearby foothills. These springs were warm in the winter, yet curiously ice cold in the summer...

The following year, on June 26, 1925, the Alaska Weekly published another, far more dramatic article on a tropical valley, entitled "The Valley of Eden"... The article opens with a description of how [Frank] Perry, while mushing (by dog-sled team) over a remote mountain pass located somewhere between the Fort Nelson and Liard Rivers, on the eastern slopes of the Cassiar Mountains, stumbled upon a strange valley filled with heavy mist. Rivers of hot water "fed by hundreds of hot springs" ran directly through it, their steamy vapours colliding with the frigid subarctic air to condense into a thick layer of fog...

Perry learned that neighbouring Indians, in spite of its surfeit of game, gave the place a wide berth. This was on account of "imprints of huge three-toed prehistoric animals"... The piece ended with a brief description of the valley's abundant mineral formations, which included healthy veins of gold, silver, and copper; huge seams of coal; and large concentrates of iron ore...

According to the article "Where the Waters Run Warm," published in the September 24, 1925 issue of the Wrangell Sentinel, a Montreal-based Royal Canadian Air Force colonel named J. Scott Williams stumbled upon a tropical valley while conducting British Columbia's first aerial prospecting expedition. This valley contained "numerous hot springs, grass, and verdure of amazing growth due, it is thought, to the warmth generated by the springs." Other floral marvels included giant tulips and a fantastic profusion of currents and raspberries.

Colonel Williams claimed that he and his crew had prospected in the valley for 3 months, feasting on moose meat, mountain mutton, and vegetables which he and another prospector... had planted. During their 3-month stay, Williams and his crew observed a number of interesting animals, including an albino moose somewhat reminiscent of Captain Scotte's white deer and a white bear...

Perhaps most interestingly, Colonel Williams placed his tropical valley in the Liard River country "beyond the Liard Trading Post," in the same general vicinity as Frank Perry's northern paradise. It seemed as if a tropical valley might indeed lie somewhere among the eastern slopes of the Cassiars...³⁸

Modern satellite images confirm these highly detailed descriptions of pioneers exactly match the unique geographic features of the Jackfish River Valley, which feeds into the South Nahanni and Liard Rivers. The sporadic releases of mammoth herds and other fear-inducing megafauna from immense cavern systems below the valley conform to consistent patterns of quantum predatory behavior by the Baal ET consortium.

According to the traditional ancestral knowledge of the Dene, giant creatures of the Pleistocene era have also been sighted on rare occasions over the past centuries, including giant predators and herd animals.³⁹ The giant Pleistocene 'bear-wolf' Amphicyon was also well known to the Dene people as the 'Waheela', having terrorized villages at various times in the past. Their canoes had been capsized by giant beavers (*Castoroides ohioensis*) who could generate large waves on the surface of lakes using their huge flat tails.

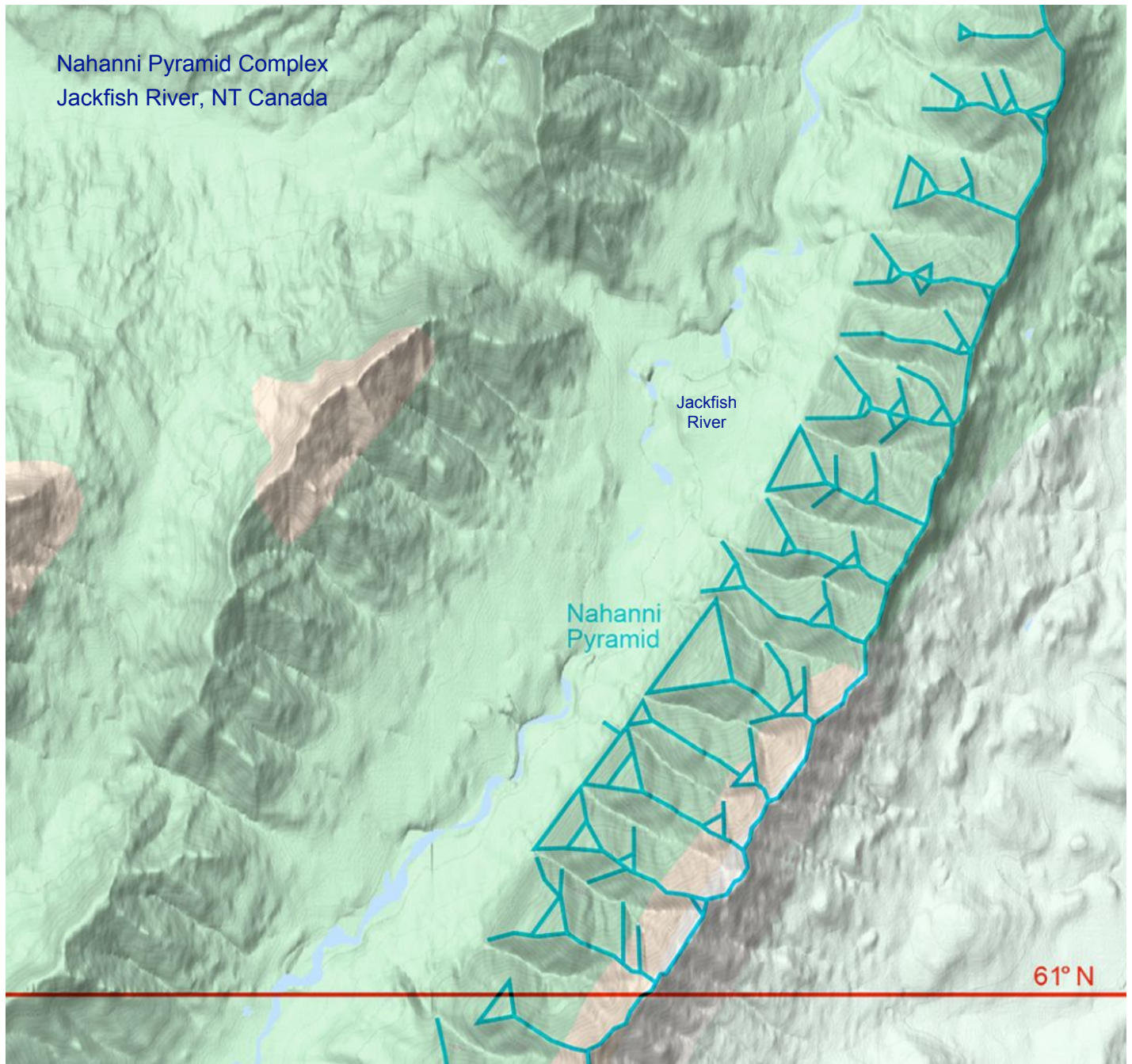
Unmistakable descriptions of the Dene relate the predations of saber-toothed tigers (*Smilodon fatalis*) known from the Pleistocene, with a weight of 160-280 kg (350-620lb) and height of 100 cm (39'). Clear reports identify American cave lions (*Panthera atrox*) prowling the South Nahanni River, measuring 1.6-2.5 m (5'3"-8'2") from the tip of the nose to the base of the tail and standing upto 1.2 m (3.9') at the shoulder.

According to many trustworthy local sources in the Nahanni anomaly zone that has included many elders, highly skilled trackers and respected ancestral sources, sightings of such huge carnivores were apparently accompanied by sporadic appearances of herds of woolly mammoths over the decades, as well as another grazing elephant-relative of the Pleistocene period with four tusks and trunks, called 'gomphotheres'.⁴⁰

Most astonishingly, Dene eyewitness accounts also confirm their genuine encounters with Hadrosaurs, or 'duck-billed' dinosaurs, endemic to the Late Cretaceous period from 86-66 million years ago –ranging from 7-8 m (23-26') in length and weighting 2-4 tons (2,000-4,000 kg). *There can be no doubt that the Baal use time-travel means to collect and breed these megafauna species in immense weather-controlled caverns.*

Nahanni Pyramid Complex
Jackfish River, NT Canada

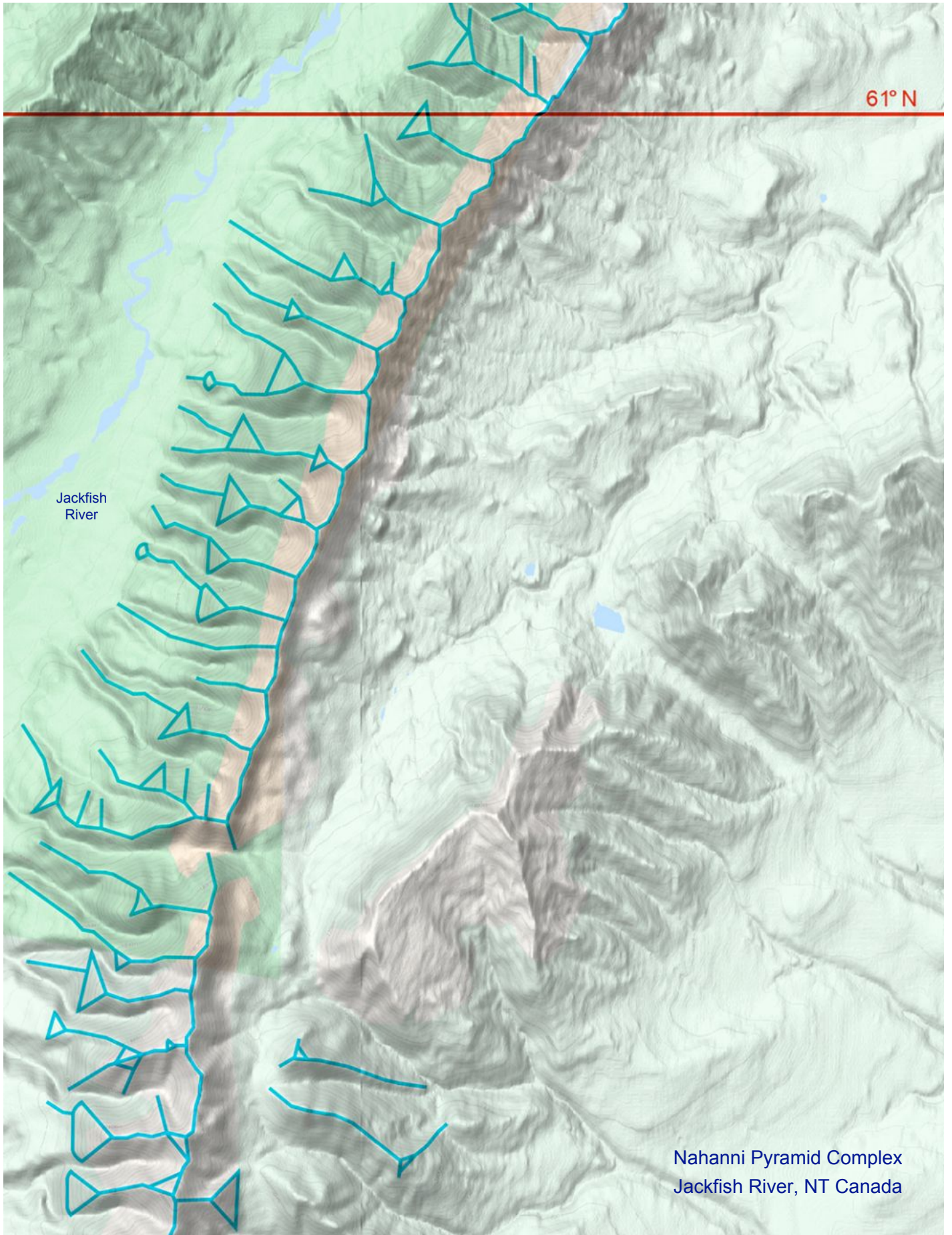




Nahanni Pyramid Complex, Northwest Territories, Canada (61.0296624°N, 123.934298°W, above, opposite) is located 6,008 miles from the Great Pyramid; comprising 24.14% of Earth's mean circumference ($\frac{24}{100}$). Exact geopositioning at 61° North latitude maximizes transduction of infrasound resonance into localized EM fields due to the presence of ferromagnetic, paramagnetic, pyroelectric elements in the geopolymer stone.

The ancient placename 'Nahanni' is composed of four Paleo-Sanskrit hieroglyphs reading: **na ha n ni**, meaning "(the) Void (of) Those, (of the) presence within", referencing the binding force of cosmic infrasound that is focused and transduced into strong EM fields; *generating heat and fog in the Jackfish River Valley.*

The southward extent of this immense Paleo-Sanskrit temple complex has not been defined, due to the poor quality of topographic data that has been made available for this region. Reflecting the pattern of clear data censorship on the part of the US Geological Survey witnessed in the Matanuska Mountains near Palmer, Alaska, *the southernmost region of the Nahanni Pyramid Complex has been altered using an algorithm that completely masks the terrain to conceal the geometric features of Atlantean temples.*



61° N

Jackfish River

Nahanni Pyramid Complex
Jackfish River, NT Canada

The occurrence of extreme electrical activity associated with lightning strikes on mountain peaks has been basically understood by science for centuries. While this electrocution danger was especially associated with mountain peaks comprised of certain types of stone, such as granite, the exact physics behind this phenomenon was later explained as the result of the piezoelectric properties of quartz by which infrasonic energy becomes converted into a strong electromagnetic field surrounding the high peaks and ridgelines.

Surveyors first reported the experience of intense electrostatic charges in the air while working on the peaks of Hayden Mountain, Colorado.⁴¹ Hayden Mountain (37.96893°N, 107.69°W) is located 7,056 miles from the Great Pyramid of present-day Giza, Egypt, representing 28.35% of Earth's mean circumference ($7^1/_{250}$). This resonant distance interval, *along with exact geopositioning at 38° North latitude*, generates strong EM fields.



Natural weather conditions that contribute to the build-up of intense electrostatic charge on high mountain ridgelines and peaks have been enhanced by the large-scale refaçading of mountainsides in artificial stone by Atlantean temple architects. The remnants of these ancient temple sites is often revealed by the presence of different rock types that have been reconstituted with the addition of fine particulate metals.

A spectacular example of this multicolored geopolymer stonework is evident at Red Mountain, Colorado, where the natural iron-rich bedrock bleeds red streaks down the steep mountainsides. The jagged, iron-loaded basalts of the original landscape were used as a foundation for successive Atlantean geopolymer ridgeline construction projects cast in grey monzonite that stands out distinctly from the natural formation.

Red Mountain, Colorado (37.9795604°N, 107.3569704°W) is located 7,045 miles from the Great Pyramid of present-day Giza, Egypt, representing 28.30% of Earth's mean circumference ($7^1/_{250}$). Exact geopositioning at 38° North latitude assures efficient reception of focused infrasound standing wave resonance.

Repeating episodes of spontaneous fires were sparked by piezoelectric transduction of high-intensity infrasound focused at the mining town of St. Elmo, Colorado, *resulting in permanent evacuation of the town.*

Dangerous levels of enhanced electromagnetic activity have become a significant hazard to hikers in Colorado at multiple peaks that can only be understood in the context of Atlantean firestone geopolymers. The common occurrence of lightning strikes on mountaintops is a well-known danger to be avoided by trekkers during stormy weather, but the severity of recent events relates to *ancient temple constructions*.

One such incident occurred on June 28, 2015, when a group of 15 hikers were struck by lightning on Mount Bierstadt. A dog accompanying the group was killed in the strike, while every member of the group were evacuated for hospitalization after the incident.⁴² The same fate was narrowly avoided at nearby peaks.

High electrostatic charge
Mount Princeton, Colorado

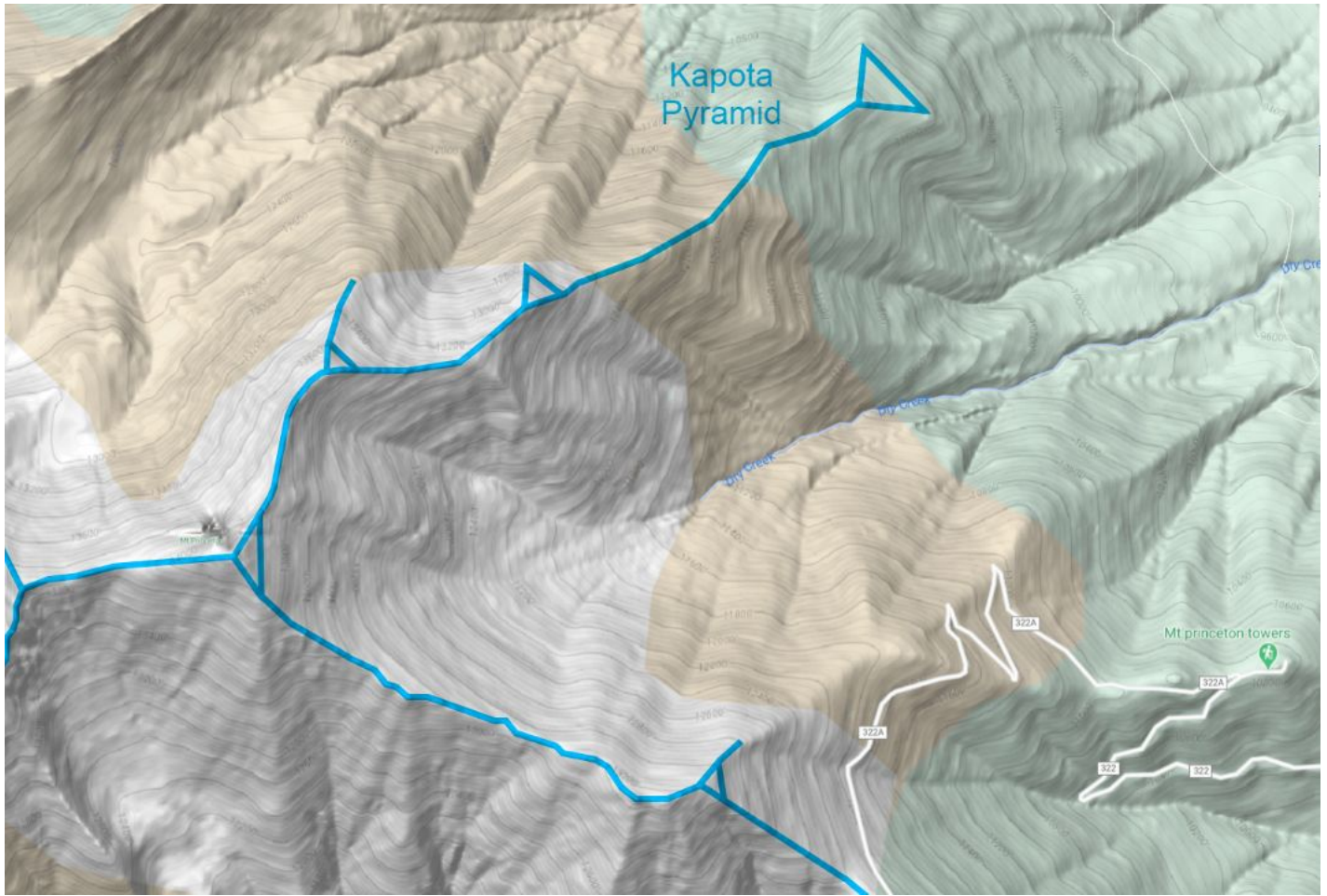


On the weekend of July 6-7, 2019, hikers atop multiple peaks in Colorado were stunned by the extreme prevailing electrostatic conditions near the peaks. A pair of hikers at Mount Evans recorded several photos of a 'hair-raising' experience as an afternoon storm rolled overhead –*developing a strong charge in the air*.

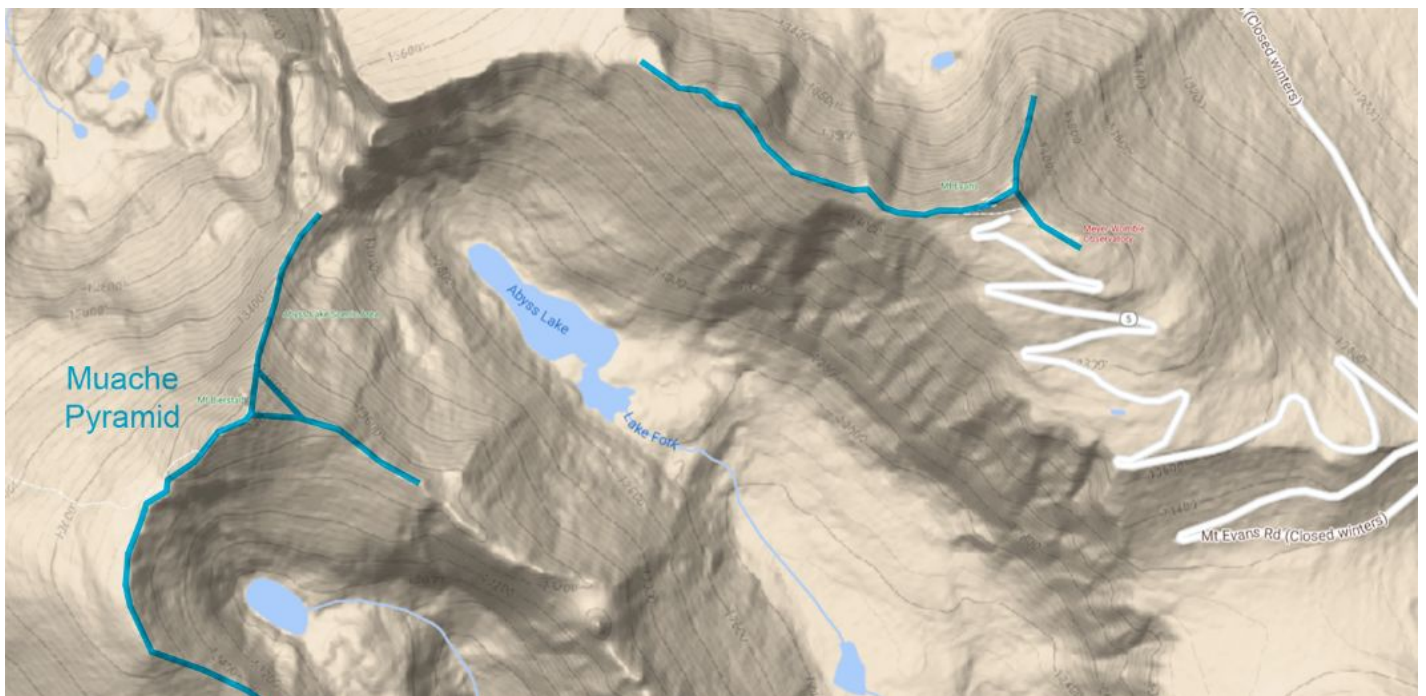
A second event of the same kind also occurred in the same timeframe atop Mount Princeton, located 66 miles to the southwest of Mount Evans, when a group of hikers were forced to retreat down the mountain after their hair began to raise into the air, as captured in photographs (above).

In both cases, hikers reported that every member of the group received electrical shocks of <50 volts from their aluminum trekking poles, as well as from their hats, backpacks and other equipment. Movements of their arms and hands made crackling electrostatic sounds and their hair stood up on end as they rapidly descended the mountain in fear. *This natural effect has been amplified by Atlantean firestone raftering.*

The extreme electromagnetic conditions recently recorded at these two Colorado peaks reflect identical circumstances documented by hikers on O'Malley Peak near the city of Anchorage, Alaska in April, 2020. The increasing frequency of erratic surges in planetary resonance inducing these strong EM field charges relates to the intended design function of the world's pyramid sites; *to be reactivated by cosmic forces*.



Kapota Pyramid Complex at Mount Princeton, Colorado (38.750535°N, 106.240105°W, above) is located 6,966 miles from the Great Pyramid of Giza, Egypt, representing 27.98% of Earth's mean circumference ($\frac{7}{25}$). Muache Pyramid Complex at Mount Evans, Colorado (39.586745°N, 105.6443328°W, below) is located 6,901 miles from the Great Pyramid, representing 27.72% of Earth's mean circumference ($\frac{111}{400}$).



As one might expect, the original stonework at many ancient Atlantean temple sites throughout the world has been largely destroyed over the course of 13,000 years of recurrent tectonic upheaval, leaving many sites with extensive subterranean systems that can be found near latitude lines according to their system.

The hidden presence of an underground complex occupied by quantum predators of the Baal syndicate is also implicated at Lone Eagle Peak, Colorado, where an unexplained disappearance occurred on July 23, 1943. Ernest Polley vanished while hiking alone on the mountain, called Lindbergh Peak at the time, which is situated right at 40° North latitude. No trace of Ernest was ever found, despite a six-day search effort.

A similarly situation appears to exist at nearby Flattop Mountain, where multiple unusual disappearances also suggest the presence of a subterranean temple complex covertly occupied by the Baal forces. Both Flattop Mountain and Lone Eagle Peak are situated at the 27.6% resonant distance from the Great Pyramid ($^{69}/_{250}$), with the latter being geopositioned at 40° North latitude.

David Devitt, age 21, and Bruce Gerling. Age 20, disappeared without a trace while hiking the main Flattop Mountain trail on October 9, 1949. Decades later, 12-year-old Robert Baldeshwiler disappeared while hiking ahead of his parents on the same trail on June 29, 1982. Robert's body was found 13 days later in an area previously searched, *implicating UFO abduction to underground chambers during the intervening days.*



High electrostatic charge
Mangystau Plateau, Kazakhstan

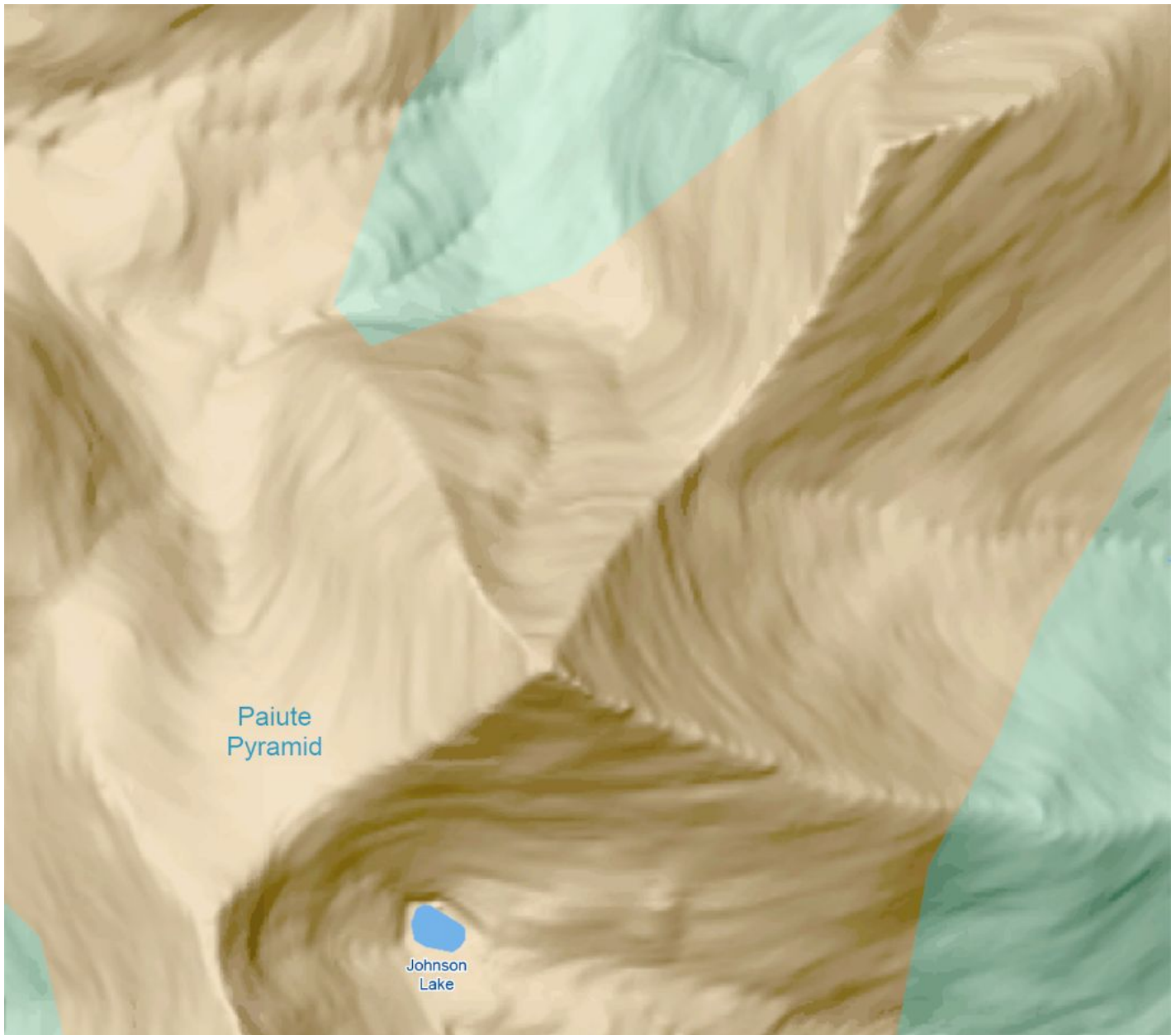
Another hair-raising electrostatic event was recorded on limestone bedrock⁴³ at Mangystau Plateau, near Aktau, Kazakhstan (44.009273°N, 51.655761°E, above). The site is 1,485 miles from the Great Pyramid, representing 5.97% of Earth's mean circumference ($^3/_{50}$), with exact geopositioning at 44° North latitude.

Video of a similar event was taken on a plateau in the Negev Desert⁴⁴ near Shahrut, Israel (29.9274°N, 34.98833°E), located approximately 231 miles from the Great Pyramid of Giza, Egypt, representing 0.93% of Earth's mean circumference ($^1/_{100}$). *This site is due east of the Great Pyramid near 30° North latitude.*

Another electrostatic storm was recorded on sandstone bedrock at Table Mountain National Park⁴⁵ in Cape Town, South Africa (33.9582°S, 18.40333°E), located 4,475 miles from the Great Pyramid, representing 17.98% of Earth's mean circumference ($^9/_{50}$). Once again, latitudinal alignment is observed at 34° South, *directly implicating spontaneous piezoelectric ignition of the Table Mountain wildfire of April 19, 2021.*⁴⁶

High-intensity electrostatic forces were also recorded on video in the Atacama Desert⁴⁷ at Valle de la Luna, Chile (22.92533°S, 68.28364°W), situated 7,528 miles from the Great Pyramid, representing 30.24% of Earth's mean circumference ($^{121}/_{400}$). Geopositioning of the site near 23° South latitude conforms to the Atlantean network distribution pattern based on the ancient Sanskrit quantum mandala [$Z_{n+1} = Z_n^2$].

The fragmentary state of the artificial stone features of these Atlantean mountain pyramid complexes generally blend in with the natural bedrock of the sites, with remnant geopolymer debris having been reconstituted from surface mining operations for contouring the entire mountainside as desired. One of the most undeniable examples of this widely used construction process is seen at Pyramid Peak, Nevada.



Paiute Pyramid, referred to today as Pyramid Peak in Great Basin National Park, Nevada (38.9483433°N, 114.2977368°W, above), is located 7,195 miles from the Great Pyramid of Giza, Egypt, representing 28.90% of Earth's mean circumference ($^{29}/_{100}$). Geopositioning at 39° North latitude, in addition to placement near the 29% resonant distance interval, greatly enhances reception of focused infrasound resonance.

Refaçading of each of the pyramid's four faces and four descending ridgeline walkways was accomplished in magnetic geopolymer quartzite, most likely cast during the greatest expansion period of the Atlantean high civilization which occurred from ~29,000-27,000 years ago.

The north, west and south faces of Paiute Pyramid are closely aligned with the cardinal directions, whereas the eastern façade presents a slight asymmetry that accommodates the original form of the mountainside. Other peaks located in present-day Nevada display the same features, *and may be inhabited by predators.*



Magnetic geopolymer quartzite
Paiute Pyramid, Nevada



On August 14, 2020, Trevor Bazil disappeared while spending an afternoon alone in the chaparral desert of eastern Nevada near his home in Panaca. His vehicle was later found parked off Oak Wells Road just east of Little Mountain in the southernmost extension of Miller Wash, southeast of Panaca.⁴⁸

His family explained that he had been prospecting for ancient stone artifacts in the hills there, as he had done many times before. He was never seen again, and no traces of Trevor, his clothing or the small backpack he was carrying were ever found.

Family members, volunteers, law enforcement, park rangers, canine units, drone operators and ATV vehicles joined together in search efforts over the difficult terrain. Canines were eventually able to track Trevor's path for 7 miles, zig-zagging all over the hillsides until terminating at a tall plastic bucket of rocks, that were assumed to have been collected by Trevor.

The inability of tracking dogs to follow Trevor's trail away from the site of the bucket confirms that is the location of his abduction by levitation into an aerial object hovering overhead. Topographic data for the area east of Oak Wells Road presents sharp geometric features that resemble Atlantean geopolymer pyramids connected by ascending ridgeline access walkways.



Nuwuvi Pyramid Complex, Nevada (37.689568°N, 114.231798°W, above) is located 7,268 miles from the Great Pyramid of present-day Giza, Egypt; comprising 29.20% of Earth's mean circumference ($^{73}/_{250}$). Another Paleo-Sanskrit pyramid complex (37.890245°N, 114.578736°W) is located nearby at Highland Peak northwest of Panaca, Nevada, 7,265 miles from the Great Pyramid; comprising 29.19% of Earth's mean circumference ($^{73}/_{250}$). Identical distance relationships presented by these two complexes correspond to the global distribution pattern of Atlantean pyramids and megalithic temples.

A similar situation persists in central Alabama, where another faction of the Baal Consortium of predatory ETs has embedded themselves below another Atlantean temple city. The unusual UFO beam abduction of Cynthia Vodovoz (age 12) took place in October, 1973 on Highway 31 just north of Gardendale, Alabama.⁴⁹

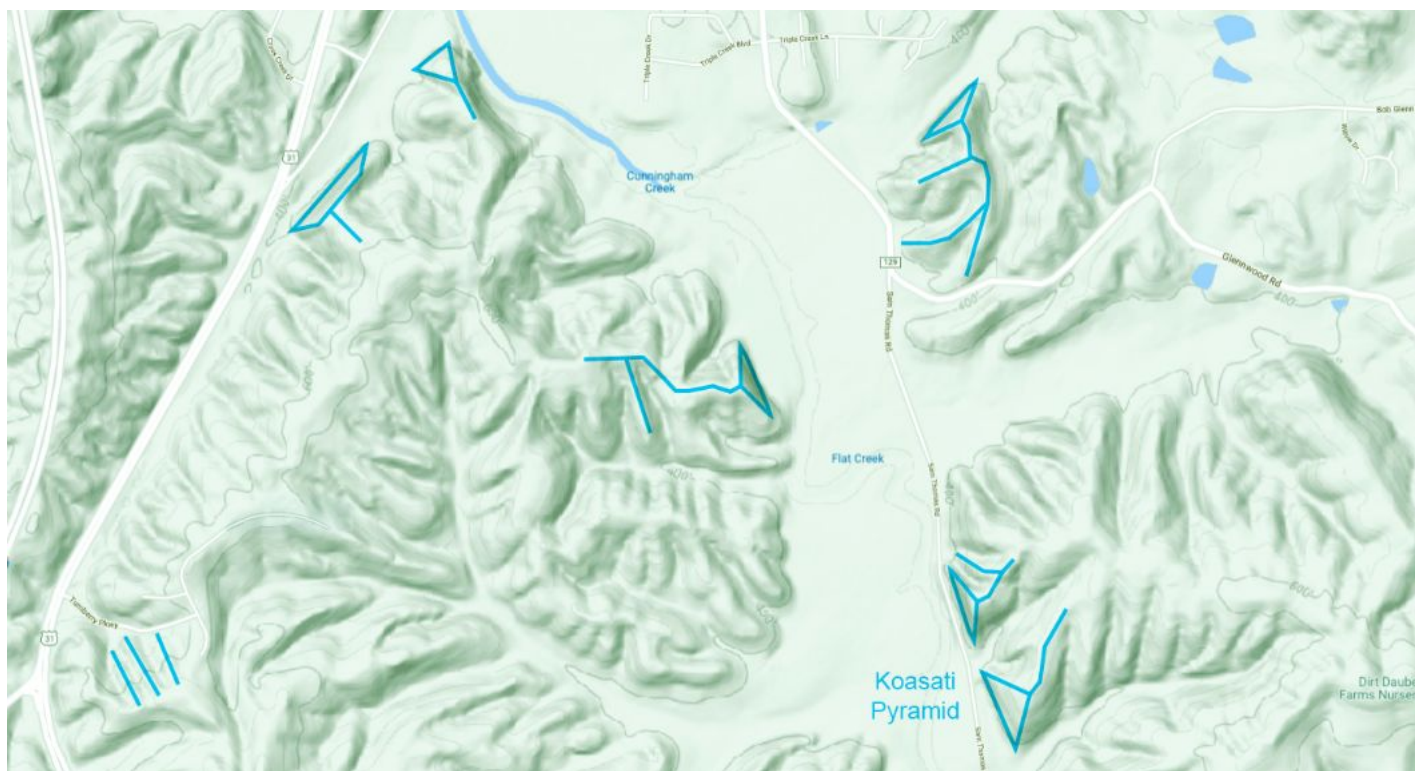
Cynthia's mother was driving her to an evening dance class in the nearby city of Birmingham, having just left their home in Morris. Looking out the car windows, they both noticed a round, disc-shaped object larger than an airplane that floated along in the darkening sky. Cynthia became transfixed as it moved on a parallel course with their vehicle, matching its speed, glowing bright green with a yellow ring around the perimeter.

Cynthia's mother then asked "is it going to land?" As object descended, the car engine suddenly died, and the witnesses noticed several other cars also began to roll to a stop. Panicking, Cynthia then felt heavy as she noticed a bright light shining onto their car, and then felt completely paralyzed by whatever was beaming down onto her. That was her last memory of the event; later waking from a hypnotically-induced sleep state.

The many stopped cars were then restarted successfully, and traffic resumed as normal, yet the pair arrived at the dance lesson 40 minutes late. Disturbed by the missing time UFO event, Cynthia underwent hypnotic regression in 1986 to restore many details of the abduction. Screams and frantic gestures from occupants of the cars ahead of them had incited the panic as multiple HHO plasma beams rapidly scanned each vehicle.

Cynthia then witnessed a very tall, thin humanoid figure walk down the road between the rows of cars. As the figure passed each vehicle, its occupants fell silent and motionless, one after another, into a hypnotic trance. As the figure approached their car, her mother slumped over, losing consciousness. Cynthia was dragged from the car by 3 small, grey figures as she resisted, before being levitated into the spacecraft.

She was placed on a metal examination table inside a brightly lit white room within the craft, near another young girl about her age on another table of the same type. She watched the small beings walk performing examinations, involving insertion of a large needle into her navel (to extract ova for hybridization). When the procedures were completed a short time later, she was placed into a transparent globe that floated her back down to the car. After she was placed inside the vehicle, the door was slammed on her back, before the sound of starting engines signaled occupants of the other cars were also released from the hypnotic stasis.



Koasati Pyramid Complex near Gardendale, Alabama (33.7303044°N, 86.7938846°W, above) is located 6,469 miles from the Great Pyramid of Giza, Egypt. This resonant distance interval represents 25.99% of Earth's mean circumference ($13/50$), facilitating efficient reception of infrasound standing wave resonance.

The concealed presence of aerial predators inhabiting ancient underground sites have also been implicated by a trio of apparent UFO abduction cases involving highly odd circumstances in northwestern Georgia. On November 8, 1940, 2-year-old Murray Upshaw, Jr. vanished from his backyard, located on the family farm located 13 miles north of Cartersville, Georgia (near the present-day town of Sonoraville, which did not exist at that time).⁵⁰ Murray's disappearance was followed by 2 days of hard rain that inhibited search efforts. Murray's body was found on the 4th day, by a tree on a rugged mountainside 1.5 miles away.

About 12 miles from the farm where Murray Upshaw was abducted in 1940, the town of Resaca, Georgia has recently become the focus of a pair of missing person cases that occurred in the very same place. On January 16, 2020, 21-year-old Caleb Nathaniel Smith disappeared from the parking lot of the Flying J gas station in Resaca, Georgia under strange circumstances.⁵¹ According to reports, Caleb's car was found with a half tank of gas and nothing that would indicate foul play was involved in his disappearance.

The naked body of Caleb Smith was found in a marshy area in Sugar Valley on February 2, 2020, several miles away from the abduction site. No shoes or clothing were ever recovered, leaving many obvious questions. Curiously, firefighters had responded to a brush fire in the immediate area where Caleb's body was found just hours later. The damp, cold weather suggests *aerial plasma beam activity was the cause*.

Police authorities released partial details concerning the autopsy report, indicating Caleb's body tested positive for methamphetamine. Despite the many unusual factors involved, this case was not ruled a homicide, but treated as a drug overdose. The official narrative offered to the public simply does not account for several unusual circumstances involving treatment of the body by police.

Members of the family of Caleb Smith did not confirm the identity of the body, and police officials did not provide any details concerning the time of death and condition of the body when it was found—a full 17 days after Caleb was reported missing. *Were Caleb's feet dirty or clean?* Why have these important details been withheld from the public, and why has the case been closed after being ruled a fatal 'accidental overdose'?

The reasons for these omissions have become quite clear from previous cases where details were provided that implicate aerial UFO abduction. Generally, the feet of the victim are missing shoes and or socks, but show no wear from barefoot walking whatsoever. As well, *facial mutilation of the corpse by laser incision* is often hidden from the public, and explains why the family never identified Caleb's body as normally done.

Methamphetamine use has been specifically linked with victims of ET abductions according to the decades-long investigations of Barbara Bartholic, and exposed by more vocal presenters on the subject such as Dr. Karla Turner. Bartholic reported that in many cases she had investigated using hypnotic regression techniques, child victims of UFO abduction were often driven to meth use in their teenage years. Bartholic witnessed that the drug somehow enabled users to receive information and even receive instant psychic direction from UFO sources in a way akin to spirit possession, yet with partial awareness of the drug user.

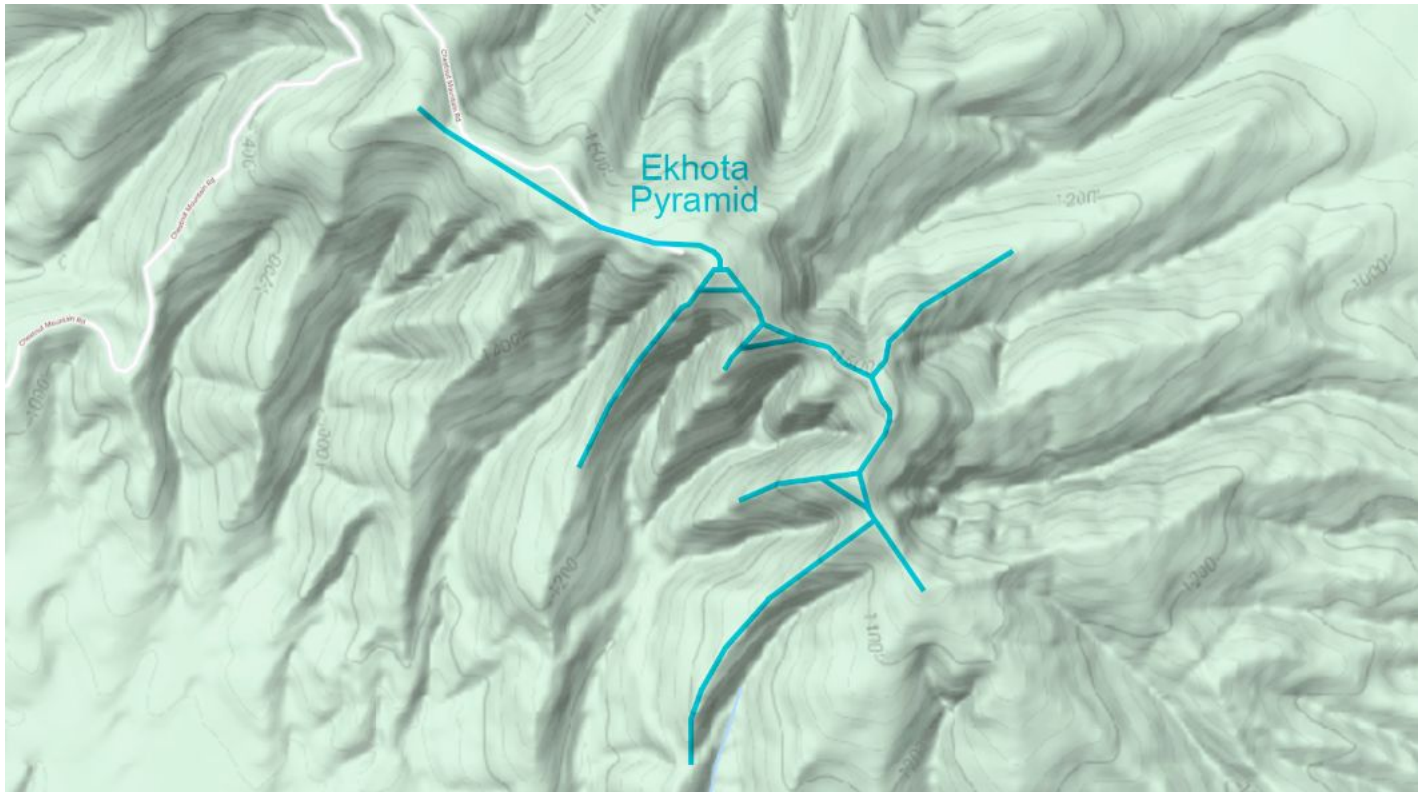
These research findings may explain many cases of psychotic murders associated with methamphetamine addicts. The same pattern witnessed in the unusual death of Caleb Smith played out at the very same location soon afterward, involving another methamphetamine user drawn to the location for similar reasons.

On January 18, 2020, just two days after the disappearance of Caleb Smith, 20-year-old Keeslyn Roberts vanished from the very same parking lot of the Flying J gas station in Resaca, Georgia. Keeslyn had missed a mandatory probation appointment for prior methamphetamine possession charges the day before she went missing, resulting in a warrant being issued for her arrest. She had stated she was going to the Resaca Flying J gas station to meet an unidentified male friend, possibly a methamphetamine dealer.

Keeslyn had displayed unusual behavior right before her disappearance that may have been caused by drug use and/or anxiety caused by UFO interactions. Before disappearing from the parking lot, she had entered an 'Employees Only' kitchen entrance at the back of the Flying J, and when asked to leave, she simply stared out the back door unresponsively before being made to leave the kitchen by employees.

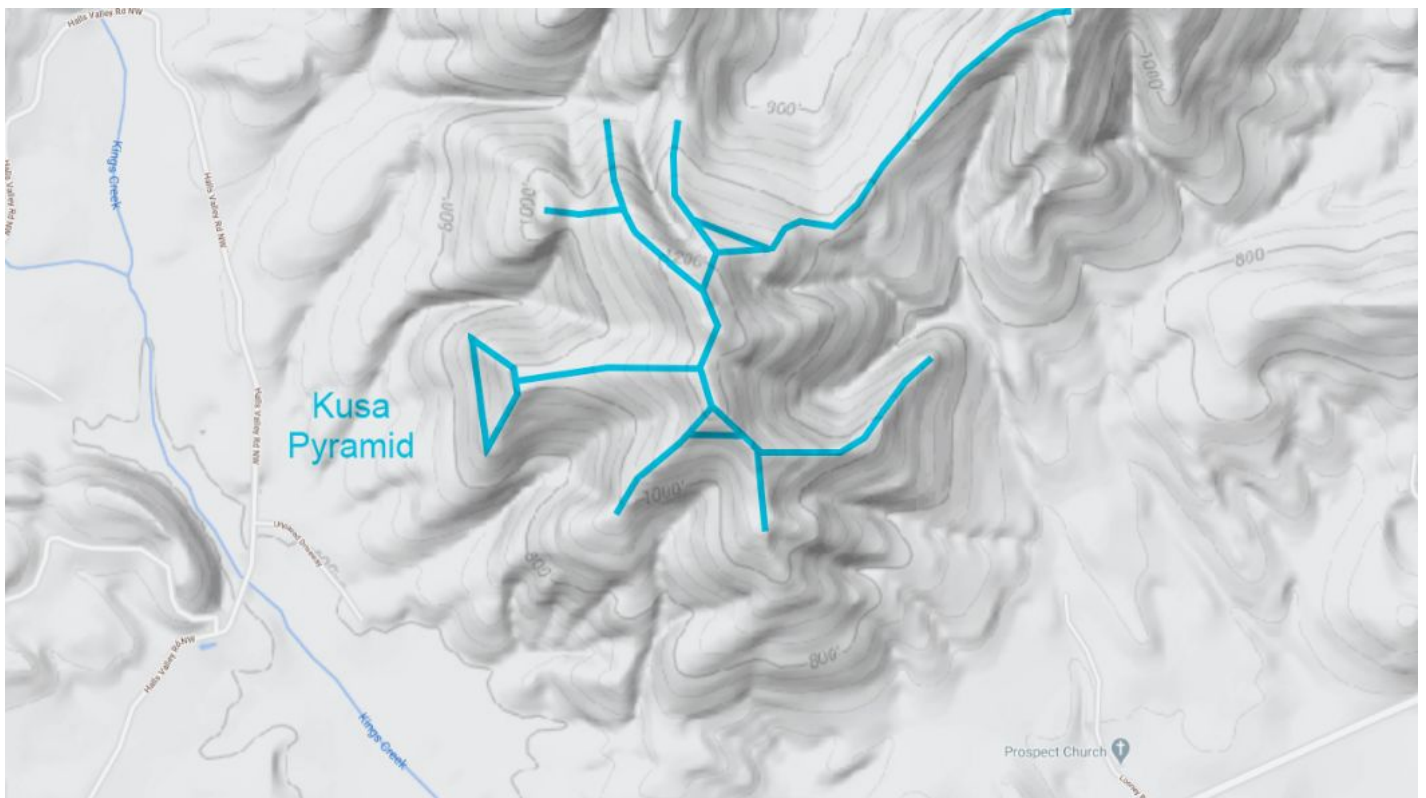
In March of 2020, investigators searched the premises and recovered several items of clothing from the dumpster later identified as those of Keeslyn Roberts. An employee stated the clothing had been in that location for the 2 months since her disappearance, and that police had not collected evidence until March.

The clothing of both Caleb Smith and Keeslyn Roberts was found in the exact same place. Another parallel is that the two victims lived on the same street in Chatsworth, Georgia, although it is said that they did not know each other. Their involvement with meth use suggests otherwise—that they knew each other through mutual friends conducting drug sales in the community. *The CIA runs gangs and cartels to manufacture, distribute and sell meth for the specific purpose of promoting demon possession and UFO abduction.*



Ekhotia Pyramid Complex at Chestnut Mountain near Resaca, Georgia (34.623286°N, 85.025388°W, above) is located 6,351 miles from the Great Pyramid of present-day Giza, Egypt, comprising 25.51% of Earth's mean circumference ($51/200$). The Resaca UFO abductions confirm this complex is occupied by the Baal.

Kusa Pyramid Complex near Rome, Georgia (34.271037°N, 85.4248666°W, below) is located 6,384 miles from the Great Pyramid of present-day Gizam Egypt, at the 25.65% radial distance interval ($32/125$).



A series of Atlantean temples form another related subterranean city complex below the north-south running mountain ridge just west of Dalton, Georgia (34.7336766°N, 85.0095252°W), located 6,346 miles from the Great Pyramid. This resonant distance represents 25.49% of Earth's mean circumference ($\frac{51}{200}$), confirming its alignment at a nodal point within the worldwide Atlantean network of pyramids and megalithic temples.

Covert subterranean and aerial activities of the Baal quantum predators include abductions carried out by grey hybrid androids for conducting surgical implantation of monitoring devices into the bodies of unwitting human victims, who are subsequently tracked and remotely influenced by aerial probes while sleeping.

Yuma, Colorado resident Tim Cullen believes he was implanted by ETs during a May 30, 1978 UFO abduction off Highway 59, along a straight north-south route between the small towns of Yuma and Joes:

Big Tim Cullen says it was a night like that so many years ago when the lights of a UFO rose over the grassy hills and settled alongside his car. He says he got a good look. "It was 100 foot long, 20 foot wide and about 10 foot high." And then it was gone...

It all began April 2, 1978. He awoke from a dream about a terrible car crash. Seven days later, the car he was driving rolled five times, according to the police report. Cullen, then 27, suffered a broken neck and other injuries.... On May 30, while returning from a doctor's appointment in Denver, his neck still encased in a protective collar, the UFO appeared from the darkness where Vernon Road slices through the hay fields and meets the highway. Cullen and his wife, Janet, stared. "It didn't make any noise," Cullen said.

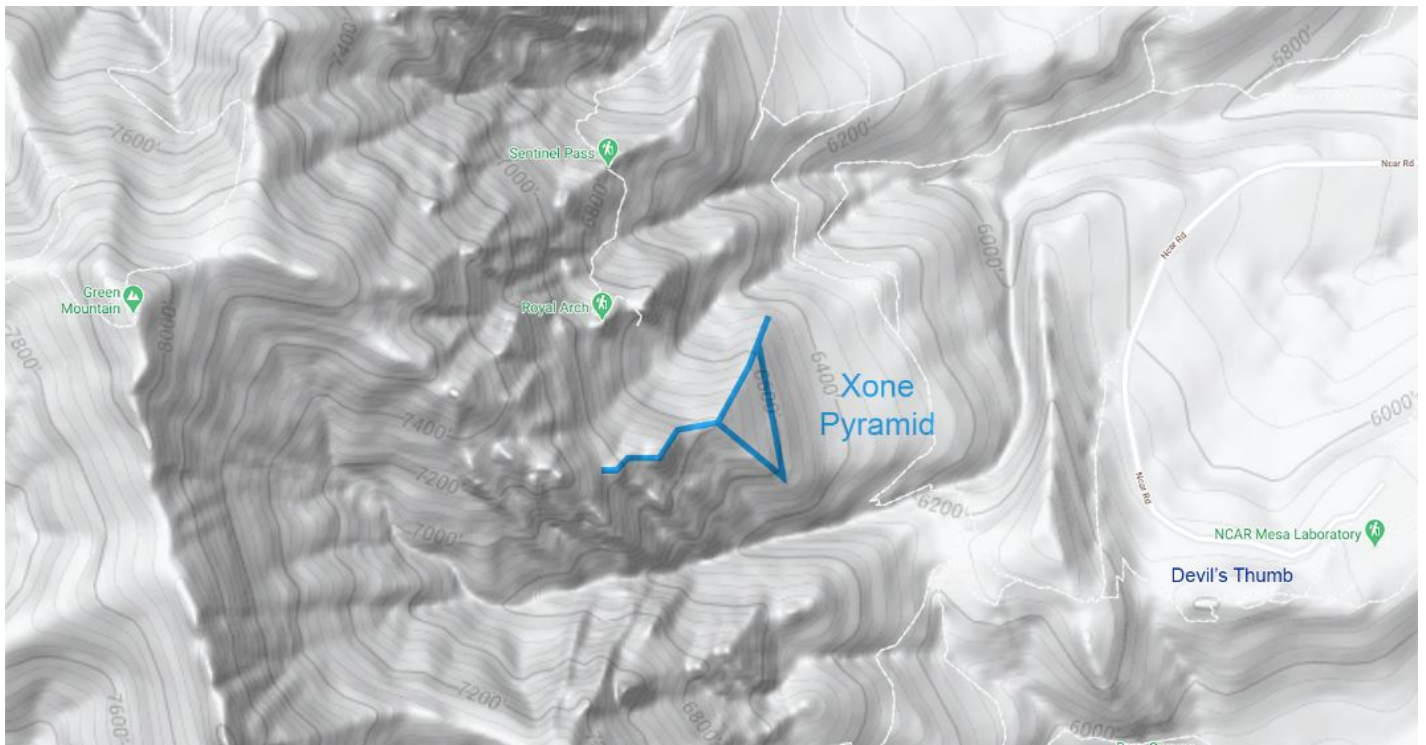


He saw another UFO two years later, in 1980, in the exact same spot along Colorado 59. And then, a third encounter of the "Yipes!" kind came in 1994, 40 miles to the south near the cemetery in Cope. "That one had blue and white lights," he said.

Cullen whomped his thumb with the hammer in 1998 while trying to drive a steel rod into the ground for a cement project. The ensuing X-ray showed the odd chunk of metal... "I knew it was an alien implant from that first encounter in 1978. There was lost time that night. I have to assume I was abducted."

Weeks after the X-ray, Cullen talked to a reporter at the Yuma newspaper... In 2000, he said, he traveled to a clinic in California and had the alien [implant] removed from his wrist. No one knows what the thing is, he said... [but] they are gathering information via these implants from Cullen and others like him.⁵²

The small town of Yuma, Colorado is situated at the 40° North latitude line, in an area of northeastern Colorado that is relatively flat and featureless. This same latitude passes through Green Mountain, near the modern city of Boulder, approximately 130 miles west of Yuma, where Tim Cullen's abductions took place.



Xone Pyramid, just east of Green Mountain, Colorado (39.980367°N, 105.287987°W, above) is located 6,868 miles from the Great Pyramid, representing 27.59% of Earth's mean circumference ($^{69}/_{250}$). This resonant distance interval, in conjunction with exact placement at 40° North latitude, confers efficient reception of infrasound standing wave resonance focused by the Orion Pyramid Complex at Giza, Egypt.

Another consistent pattern observed in the naming of nearby sites stalked by quantum predators of the Baal ET consortium –immediately below Xone Pyramid is an area called 'Devil's Thumb Rolling Hills'. While the disturbing circumstances of various individuals who have disappeared “under the Devil's thumb” over the centuries have not been recorded, the name of this site preserves the strong apprehension of pioneers.

Christian teachings concerning the Devil and his demonic hoards directly correspond to ancient Atlantean spiritual teachings of the Sons of the Law of One that stood in opposition to the degenerate activities of the Sons of Belial, including ritual animal fornication for human/animal hybridization through advanced genetic engineering procedures executed by grey hybrid androids, previously identified as *Homo sapiens oculus*.

Highly complex genetic manipulation of human populations inhabiting on the surface of Earth have been orchestrated by *Homo draconis* –the giant reptilian humanoids, utilizing 4th density time-travel maneuvers involving spacecraft fleets contained within immense 'mothership' carriers that were summarized and temporally framed by the Cassiopaea transmission Source back on October, 22 1994:

There has been interference by the Lizard beings in the physical structure of the human beings for their own benefit... [by manipulating] the time cycle experienced on this plane, for quite some time as you measure it. For 74 thousand years they have been interfering in a backwards and forwards time reference manner in order to set up circumstances that they perceive to be beneficial for them in the measure of time that you would consider to be forward, that is, in the future. They have been going backwards and forwards in time to do this. They are suspended in the time cycle as they do this. So what they perceive as being your equivalent of one hour could be as long as 74 thousand years... They originally set up circumstances for their benefit 309 thousand years ago, however, they have been using the particular bracketed period of the 74 thousand year period to alter things in all the various ways mentioned earlier.

As apex quantum predators of the Baal ET consortium, the giant Homo *draconis* species represents an invisible threat to human life on Earth –posing the greatest challenge to human advancement over the last 74,000 years, according to the Source channeled through Laura Knight-Jadczyk. Concise statements given by the Cassiopaeans on this subject offer great insight into transdimensional tactics of this dark adversary.

A series of stunning UFO photographs were taken by US Naval forces in the Arctic Ocean near Jan Mayen volcanic island north of Iceland, from the periscope camera of the USS Trepang SSN 674 in March, 1971.⁵³ Various types of spacecraft were witnessed and photographed during the event, including large, rounded triangular vehicles and immense cigar-shaped objects many times larger than a submarine (below).



USS Trepang periscope UFO
Arctic Ocean - March, 1971

A rapidly growing volume of evidence exposing the nefarious long-term plans of the Baal consortium offers many clear indications concerning transdimensional activities undertaken in their fleets of time-traveling spacecraft. UFO abduction cases have made it apparent that moving buses can be levitated right off of highways into these gigantic craft using HHO plasma beams. Immense mothership carriers possess hanger bays with capacities to easily accommodate the largest cargo container ships that sail the oceans today.

The staggeringly large transport capacities of spacecraft operated by the Baal consortium also facilitate the implementation of complex genetic engineering programs requiring collection of large herds of megafauna species by time-travel to different epochs of Earth's past, as well as to other temporal periods of other worlds offering compatible megafauna species for hybridization projects at underground bases on Earth.

The feasibility of time-travel technology ensures that 'revival' of extinct species of dinosaurs or other giant megafauna only becomes possible for highly advanced, space-faring societies. Using these sophisticated means, the Baal forces maintain a large, worldwide network of artificially illuminated, weather-controlled caverns full of huge, dangerous animals *to unleash them on unsuspecting humans for domination by terror.*

Much smaller disc-shaped scout craft have been photographed monitoring the activities of this author, displaying subtle gyrating motions illuminating the mists at night above La Maná, Ecuador (opposite).⁵⁴ These were the last images taken by my Olympus camera before it was remotely terminated during the event to prevent more UFO images from being taken. I suspected the UFO had induced the malfunction.

Subsequent termination of all my digital equipment years later –including 2 computers, 4 cameras and a metal detector– made it clear that *covert, instantaneous surveillance* of my captures enabled governments in the US and/or Ecuador to actively 'kill-switch' my electronic equipment '*for reasons of National Security*'.



HHO plasma disc spacecraft
La Maná, Ecuador - Jan 21, 2012

References

- ¹ Hitchcock D (2019) 'Combe-Capelle...' *Dons Maps*, online · <https://donsmaps.com/combecapelle.html>
- ² Balaesque P, Poulet N, Cussat-Blanc S, Gerard P, Quintana-Murci L, Heter E, Jobling MA (2015) 'Y-Chromosome Descent Clusters and Male Differential Reproductive Success: Young Lineage Expansions Dominate Asian Pastoral Nomadic Populations' *Euro J Human Genetics*, online · <https://www.nature.com/articles/ejhg2014285.pdf>
- ³ Polychronopoulos S, Kougias D, Polykarpou P, Skarlatos D (2013) 'The Use of Resonators in Ancient Greek Theaters' *Acustica* 99, pp. 64-69, online · https://www.researchgate.net/publication/262853414_The_Use_of_Resonators_in_Ancient_Greek_Theatres
- ⁴ Liu R, Rawson J, Pollard AM (2018) 'Beyond Ritual Bronzes: Identifying Multiple Sources of Highly Radiogenic Lead...' *Nature*, online · https://www.ncbi.nlm.nih.gov/pmc/articles/PMC6079070/pdf/41598_2018_Article_30275.pdf
- ⁵ Chen K, Mei J, Rehren T, Zhao C (2016) 'Indigenous Production and Interregional Exchange: Late Second-Millennium BC Bronzes from the Hanzhong Basin, China' *Cambridge*, online · <https://www.cambridge.org/core/journals/antiquity/article/indigenous-production-and-interregional-exchange-late-secondmillennium-bc-bronzes-from-the-hanzhong-basin-china/099103977783DEFECF742836B613B8CE>
- ⁶ Putney A (2018) 'Human Resonance: Phonon Transfer Alchemy' *Youtube*, online · <https://youtu.be/JRwLNPcgwpE>
- ⁷ -- (2019) 'Infrared Sensing in Snakes' *Wikipedia*, online · https://en.wikipedia.org/wiki/Infrared_sensing_in_snakes
- ⁸ Fang J (2010) 'Snake Infrared Detection Unravelled' *Nature*, online · <https://www.nature.com/news/2010/100314/full/news.2010.122.html>
- ⁹ Gracheva EO, Ingolia NT, Kelly YM, Cordero-Morales JF, Hollopeter G, Chesler AT, Sanchez EE, Perez JC, Weissman JS, Julius D (2010) 'Molecular Basis of Infrared Detection by Snakes' *Nature* 464, pp. 1006-1011
- ¹⁰ Slagboom J, Kool J, Harrison RA, Casewell NR (2017) 'Haemotoxic Snake Venoms...' *British J Haematology* 177, pp. 947-959, online · <https://www.ncbi.nlm.nih.gov/pmc/articles/PMC5484289/pdf/BJH-177-947.pdf>
- ¹¹ Kita M, Nakamura Y, Okumura Y, Ohdachi S. D., Oba Y, Yoshikuni M, Kido H, Uemura D (2004) 'Blarina Toxin, a Mammalian Lethal Venom from the Short-Tailed Shrew *Blarina brevicauda*: Isolation and Characterization' *PNAS*, online · <https://www.pnas.org/doi/pdf/10.1073/pnas.0402517101?download=true>
- ¹² Barua A, Mikheyev AS (2021) 'An Ancient, Conserved Gene Regulatory Network Led to the Rise of Oral Venom Systems' *PNAS*, online · <https://www.pnas.org/doi/epdf/10.1073/pnas.2021311118>
- ¹³ Cheng MH, Zhang S, Porritt RA, Rivas MN, Paschold L, Willscher E, Binder M, Arditi M, Bahar I (2020) 'Superantigenic Character of an Insert Unique to SARS-CoV-2 Spike Supported by Skewed TCR Repertoire in Patients with Hyperinflammation' *PNAS*, online · <https://www.ncbi.nlm.nih.gov/pmc/articles/PMC7568239/pdf/pnas.202010722.pdf>
- ¹⁴ Armus T (2020) 'Coronavirus Researcher Killed in Pennsylvania Murder-Suicide, Police Say' *Washington Post*, online · <https://www.washingtonpost.com/nation/2020/05/06/bing-liu-university-of-pittsburgh-coronavirus-researcher-murder-suicide/>
- ¹⁵ Braun T (2020) 'Hypothesis: COVID Is an Envenomation...' *DrTauBraun*, online · <https://www.drtaubraun.com/>
- ¹⁶ Brandt R (2021) 'Like Venom Coursing Through the Body: Researchers Identify Mechanism...' *Univ Arizona*, online · <https://news.arizona.edu/story/venom-coursing-through-body-researchers-identify-mechanism-driving-covid-19-mortality>
- ¹⁷ -- (2022) 'Venom-Producing Snake Organoids Developed in the Lab' *Hubrecht Institute*, online · <https://www.hubrecht.eu/venom-producing-snake-organoids-developed-in-the-lab/>
- ¹⁸ Boyd C (2022) 'Scientists Claim Covid Virus Contains Tiny Chunk of DNA that 'Matches Sequence Patented by Moderna Three Years Before Pandemic Began'' *Daily Mail*, online · <https://www.dailymail.co.uk/news/article-10542309/Fresh-lab-leak-fears-study-finds-genetic-code-Covids-spike-protein-linked-Moderna-patent.html>
- ¹⁹ Brogna C, Cristoni S, Petrillo M, Querci M, Piazza O, Van den Eede G (2021) 'Toxin-Like Peptides in Plasma, Urine and Faecal Samples from COVID-19 Patients' *F1000Research*, online · <https://www.ncbi.nlm.nih.gov/pmc/articles/PMC8772524/pdf/f1000research-10-78337.pdf>
- ²⁰ Suryamohan K, et al. (2020) 'The Indian Cobra Reference Genome and Transcriptome Enables Comprehensive Identification of Venom Toxins' *Nature Genetics* 52, pp. 106-117, online · <https://www.nature.com/articles/s41588-019-0559-8.pdf>
- ²¹ Albuлесcu L-O, et al. (2019) 'A Decoy-Receptor Approach Using Nicotinic Acetylcholine Receptor Mimics Reveals Their Potential as Novel Therapeutics Against Neurotoxic Snakebite' *Frontiers in Pharmacology*, online · <https://www.frontiersin.org/articles/10.3389/fphar.2019.00848/full>
- ²² Wang X, Huang J, Zhu F (2018) 'Human Endogenous Retroviral Envelope Protein Syncytin-1 and Inflammatory Abnormalities in Neuropsychological Diseases' *Frontiers in Psychiatry*, online

-
- <https://www.frontiersin.org/articles/10.3389/fpsy.2018.00422/full>
- ²³ Janardhan B, Shrikanth VM, Dhananjaya BL, More SS (2015) 'Anti-Snake Venom Properties of Medicinal Plants' *Int J Ph & Ph S* 7, online · https://innovareacademics.in/journals/index.php/ijpps/article/download/3910/pdf_1246
- ²⁴ Abreu JL (2021) 'Artemisia Annua & Zinc for the Treatment of COVID-19' *Int J Good Conscience*, online · [http://www.spentamexico.org/v16-n2/A1.16\(2\)1-41.pdf](http://www.spentamexico.org/v16-n2/A1.16(2)1-41.pdf)
- ²⁵ -- (2021) 'WHO Offered \$20M Bribe to Poison COVID-19 Cure – Madagascar President' *GreatGameIndia*, online · <https://greatgameindia.com/who-offered-20m-bribe-to-poison-covid-19-cure-madagascar-president/>
- ²⁶ -- (2021) 'There Once Lived a 'Dragon Man': Human Skull Found in China...' *IndiaToday*, online · <https://www.indiatoday.in/science/story/dragon-man-fossil-china-human-skull-harbin-evolution-neanderthals-1820223-2021-06-28>
- ²⁷ Smith KN (2021) 'Is the "Dragon Man" Skull Actually from a New Hominin Species?' *Ars Technica*, online · <https://arstechnica.com/science/2021/07/is-the-dragon-man-skull-actually-from-a-new-hominin-species/>
- ²⁸ Putney A (2009) 'Human Resonance: Roswell Crash Debris Text & Autopsy' *Youtube* · <https://youtu.be/ryud39VE-H4>
- ²⁹ Levitt D (2009) 'Dinosaurs Decoded' *Veriscope Pictures*, online · <https://archive.org/details/dinosaurs-decoded>
- ³⁰ Holliday CM, Porter WR, Vliet KA, Witmer LM (2019) 'The Frontoparietal Fossa and Dorsotemporal Fenestra of Archosaurs...' *Adv. Int. Anatomy & Evol. Bio.* 303(4), pp. 1060-1074
- ³¹ Griffith OW, Brandley MC, Belov K, Thompson MB (2016) 'Reptile Pregnancy...: A Comparative Analysis of the Uterine Transcriptome in Viviparous and Oviparous Lizards' *Genome Biol. Evol* 8(10), pp. 3226-3239, online · <https://www.ncbi.nlm.nih.gov/pmc/articles/PMC5174741/pdf/evw229.pdf>
- ³² -- (2010) 'The Burrenjour; a Living Dinosaur?' *Midget on Fire*, online · <http://www.midgetonfire.blogspot.com/2010/04/burrenjour-living-neovenatorid.html>
- ³³ -- (2020) 'The Giant Congo Snake' *Mysteries Unsolved*, online · <https://mysteriesunsolved.com/2020/05/the-congo-snake.html>
- ³⁴ Paulides D (2022) 'Missing 411 - Special Edition' *Youtube*, video @ 1:30 online <https://youtu.be/3kxPnv19fek>
- ³⁵ -- (2020) 'Proof We Do Not Know Everything...' *Youtube*, video online · <https://youtu.be/uyS8GjOMx4Q>
- ³⁶ Swancer B (2017) 'Vanishings and High Strangeness at Africa's Cursed Mountain' *Mysterious Universe*, online · <https://mysteriousuniverse.org/2017/01/vanishings-and-high-strangeness-at-africas-cursed-mountain/>
- ³⁷ Peters H (2018) 'Legends of the Nahanni Valley...' *Youtube*, video online · <https://youtu.be/Nb7riuu2yTE>
- ³⁸ -- (2019) 'The Legend of Canada's Tropical Valley: Part 1 - Oasis in the Arctic' *Mysteries of Canada*, online · <https://mysteriesofcanada.com/bc/the-legend-of-canadas-tropical-valley-part-1-an-oasis-in-the-arctic/>
- ³⁹ Peters H (2021) 'Prehistoric Monsters of the Nahanni Valley' *Youtube*, video online · <https://youtu.be/vkCpblwtCuo>
- ⁴⁰ Oskin B (2014) 'Early Americans Dined on Four-Tusked Elephant Relative, Say Scientists' *CS Monitor*, online · <https://www.csmonitor.com/Science/2014/0715/Early-Americans-dined-on-four-tusked-elephant-relative-say-scientists>
- ⁴¹ -- (2019) 'Something Important to Know Before the Storm...' *Youtube*, video online · https://youtu.be/fp2_r1aDK54
- ⁴² -- (2015) '15 Colorado Hikers Hit by Lightning, Dog Killed' *WLTX News*, online · <https://www.wltx.com/article/news/15-colorado-hikers-hit-by-lightning-dog-killed/101-234978085>
- ⁴³ -- (2019) 'The Sights and Sounds of Storm Static Electricity' *Youtube*, video online · <https://youtu.be/vSKa3rkGu3M>
- ⁴⁴ -- (2017) 'Electric static storm in Israel Negev Shacharut' *Youtube*, video online · <https://youtu.be/eW-66HGh-O0>
- ⁴⁵ -- (2013) 'Static Electricity on Table Mountain' *Youtube*, video online · <https://youtu.be/ZMXK1KCJnLA>
- ⁴⁶ Imray G (2021) 'Wildfire Descends Table Mountain in South Africa...' *SOTT*, online · <http://www.sott.net/article/451648-Wildfire-descends-Table-Mountain-in-South-Africa-torching-University-of-Cape-Town>
- ⁴⁷ -- (2012) 'Static Storm' *Youtube*, video online · <https://youtu.be/Uggbun9MkVU>
- ⁴⁸ West R (2021) 'Case Study 14: The Disappearance of Trevor Bazil' *Youtube* · <https://youtu.be/2rNpJqO1YNY>
- ⁴⁹ -- (2021) 'The Vodovoz Encounter... Paranormal Stories' *Youtube*, video online · <https://youtu.be/nS8L5H2tt2Y>
- ⁵⁰ Paulides D (2011) 'Missing 411 - Eastern United States & Canada' CreateSpace, South Carolina, pp. 98-100
- ⁵¹ -- (2021) 'Bizarre Disappearances of Keeslyn Roberts & Caleb Smith' *Youtube* · https://youtu.be/RP_zKs3UrMc
- ⁵² -- (2007) 'UFOs Make Yuma Man's Life a Pit Stop' *Denver Post*, online · <https://www.denverpost.com/2007/05/08/ufos-make-yuma-mans-life-a-pit-stop/>
- ⁵³ Wheatstone R (2015) 'Paranormal Investigators Claim 'Leaked' UFO Pictures Taken From US Submarine Show Vessels Hovering Over Atlantic Ocean' *Mirror*, online · <https://www.mirror.co.uk/news/world-news/paranormal-investigators-claim-leaked-ufo-6029998>
- ⁵⁴ Putney A (2012) 'Brightly Shining Plasma Ships Above the Sacred Mountain of La Maná, Ecuador' *Human Resonance*, online · https://www.human-resonance.org/mana_ships.html