



Pixels & Lucky Charms

Pixels & Lucky Charms

Folklore of the Little People has appeared in various forms in contemporary media, films and consumer products. Keebler's Cookies present imagery of tiny gnomes baking within the trunk of a great tree, yet the most widely disseminated fiction film character actually based on the gnome mummy called 'Pedro' is the green gnome Jedi Master Yoda. The name 'Yoda' was taken from the Classical Sanskrit word for 'warrior', and a potential Star Wars spin-off film on the adventures of the young Yoda has been suggested.

Investigations of dynamic artificial landforms in the low mountains of La Envidia, Ecuador yielded discoveries of multiple soil-covered pyramids aligned along the paths of ascending walkways. Shoals of tiny stones composed of geopolymer magnetic basalt are abundant in these areas. One of the most dense concentrations of artifacts was encountered in streambeds below the Gnome Pyramid of Mist.



Exciting years of prospection for ancient stone artifacts in the streams of La Envidia, Ecuador has propelled our recovery of hundreds of geopolymer walkway paving tiles and hand-tools cast in synthetic basalt, andesite and granite (Putney & Benoit, 2017). *A series of fortuitous finds of microliths beginning in 2016 have continued to accrue, quickly growing into a large collection of gnome-made walkway paving micro-tiles cast in magnetic firestone basalt, that we now affectionately refer to as 'lucky charms'.*

The fine, miniature scale of these sharply geometric pavement tiles lies beyond the creative interests and abilities of human beings, and could only have been crafted by the tiny, fastidious hands of gnomes. *Perhaps these magnetic basalt paving tiles of the gnomes are actually referenced in Irish Leprechaun folklore as 'lucky charms' carried in a leather pouch?*

The most significant function of the gnome-made firestone micro-tiles involves bioelectrical fueling for the Atlantean healing arts that were practiced in subterranean temple chambers that once glowed with the ultraviolet and infrared radiations of HHO plasma. While Native American folklore often relates the fierceness of gnome warriors, *many remarkable stories also involve hands-on qi healings given by gnomes.*

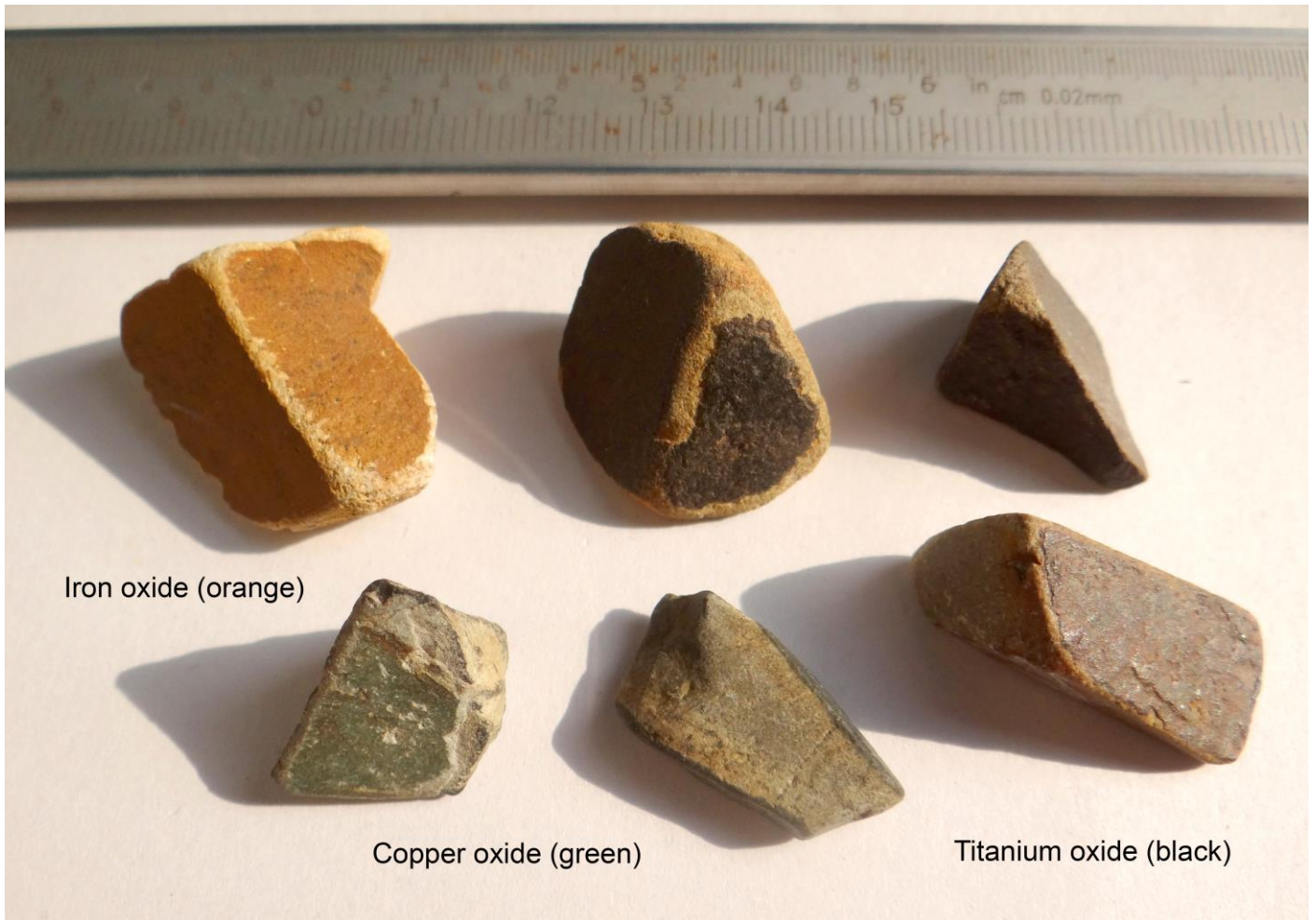
Among the hundreds of small geometrically-shaped paving tiles recovered in streambed prospection in La Envidia are dozens of smoothly crafted implements that display all the same characteristics as massage and guasha tools used by humans, yet produced on a scale nearly $\frac{1}{5}^{\text{th}}$ of human size. Many fine examples of these miniscule massage and guasha tools found near the Gome Pyramid of Mist are presented herein.

Ellipsoidal and egg-like stones were cast for massage purposes, while more angular scraping tools were crafted for giving guasha treatments. Several of these synthetic firestone basalt tools are coated in a fine layer of kaolin cement residue that adhered during the casting process. All of these tools are magnetic.





Ceramic gnome figurine heads
La Maná, Ecuador



Iron oxide (orange)

Copper oxide (green)

Titanium oxide (black)

Edged pixie gnome guasha tools
Magnetic geopolymer basalt
La Envidia, Ecuador





Bark-style pixie gnome knife & guasha tools
Magnetic geopolymer basalt
La Envidia. Ecuador





Pixie gnome knife, 21 mm x 10 mm
Magnetic geopolymer basalt
La Envidia, Ecuador





Pixie gnome knife, 21 mm x 10 mm
Magnetic geopolymer basalt
La Envidia, Ecuador



























































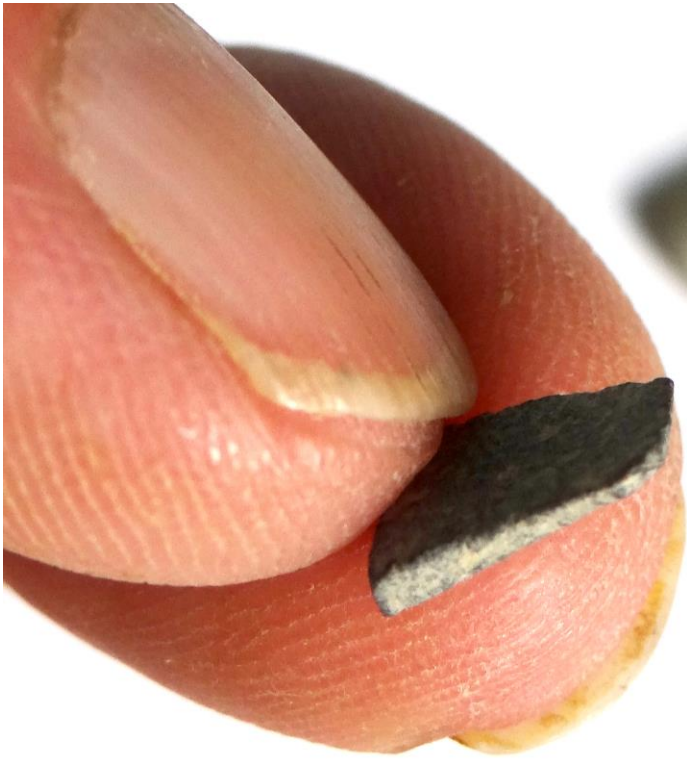
















































































Human & pixie gnome acupuncture tools
Magnetic geopolymer basalt
La Maná & La Envidia, Ecuador

























