

7

The Hopi Complex



The Hopi Complex

A wealth of Paleo-Sanskrit heritage sites has been razed by the US government in a desperate bid to deny the technologically advanced origins of the indigenous peoples of the Americas. The existence of a massive subterranean temple complex hidden in the Grand Canyon has been effectively erased by a 111-year-long disinformation and cultural control scheme perpetrated by the US government via the Smithsonian Institute.

An astonishing April 5, 1909 article published in the Arizona Gazette entitled 'Explorations in Gran Canyon' reported on profound cultural treasures of the Hopi, Havasupai, Zuni and Pima tribes native to the region:



The latest news of the progress of the explorations of what is now regarded by scientists as not only the oldest archaeological discovery in the United States, but one of the most valuable in the world, which was mentioned some time ago in the Gazette, was brought to the city yesterday by G. E. Kinkaid, the explorer who found the great underground citadel of the Grand Canyon during a trip from Green River, Wyoming, down the Colorado in a wooden boat to Yuma several months ago.

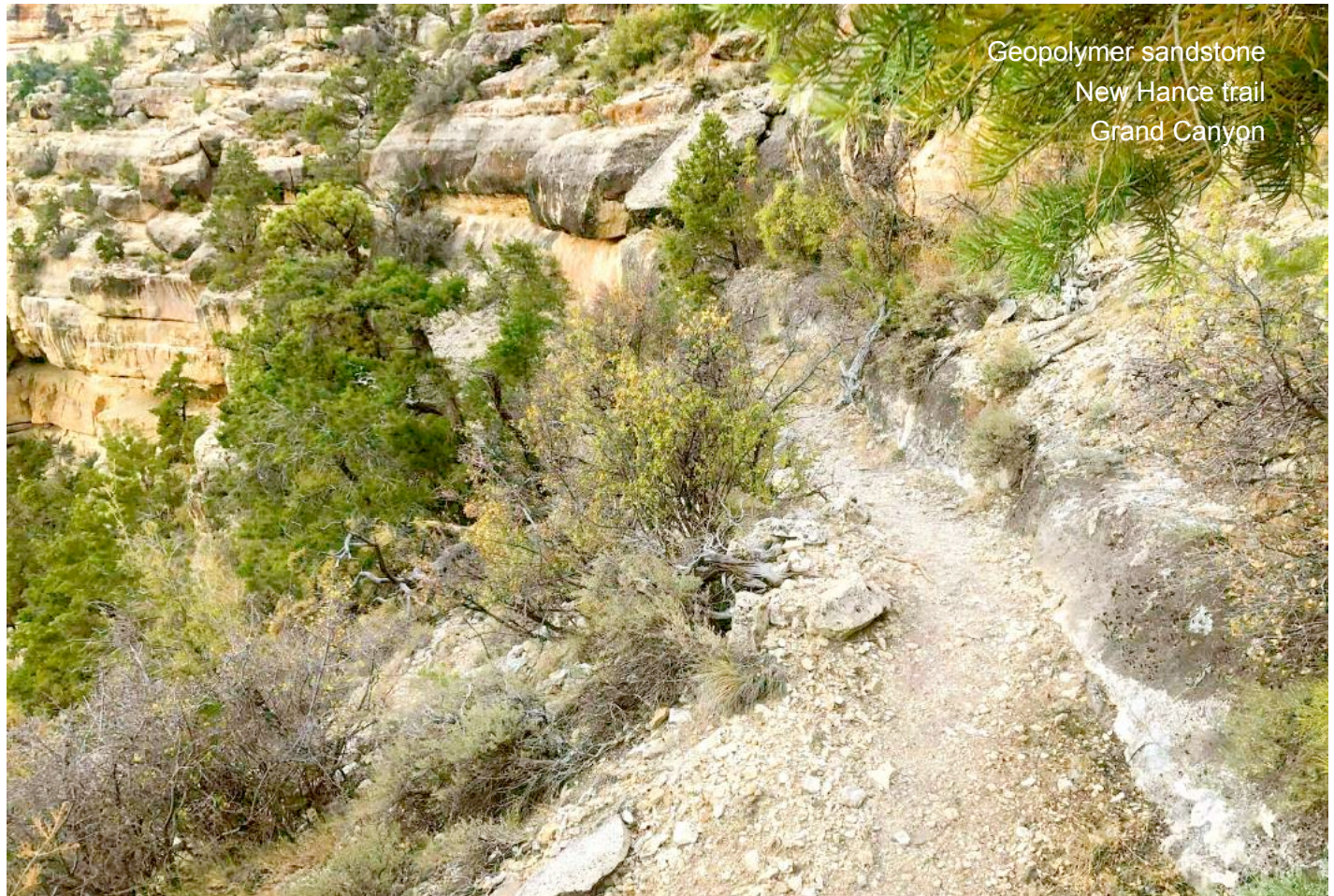
According to the story related to the Gazette by Mr. Kinkaid, the archaeologists of the Smithsonian Institute, which is financing the expeditions, have made discoveries which conclusively prove that the race which inhabited this mysterious cavern, hewn in solid rock by human hands, was of oriental origin...

Under the direction of Prof. S. A. Jordan, the Smithsonian Institute is now prosecuting the most thorough explorations, which will be continued until the last link in the chain is forged. Nearly a mile-long tunnel underground, about 1,480' below the surface, the long main passage has been delved into, to find another mammoth chamber from which radiates scores of passageways, like the spokes of a wheel.

Several hundred rooms have been discovered, reached by passageways running from the main passage, one of them having been explored for 854' and another 634'. The recent finds include articles which have never been known as native to this country, and doubtless they had their origin in the orient. War weapons, copper instruments, sharp-edged and hard as steel, indicate the high state of civilization reached by these strange people.

So interested have the scientists become that preparations are being made to equip the camp for extensive studies, and the force will be increased to thirty or forty persons.

"Before going further into the cavern, better facilities for lighting will have to be installed, for the darkness is dense and quite impenetrable for the average flashlight. In order to avoid being lost, wires are being strung from the entrance to all passageways leading directly to large chambers.



How far this cavern extends no one can guess, but it is now the belief of many that what has already been explored is merely the 'barracks', to use an American term, for the soldiers, and that far into the underworld will be found the main communal dwellings of the families. The perfect ventilation of the cavern, the steady draught that blows through, indicates that it has another outlet to the surface."

Mr. Kinkaid was the first white child born in Idaho and has been an explorer and hunter all his life, thirty years having been in the service of the Smithsonian Institute. Even briefly recounted, his history sounds fabulous, almost grotesque:

"First, I would impress that the cavern is nearly inaccessible. The entrance is 1,486 feet down the sheer canyon wall. It is located on government land and no visitor will be allowed there under penalty of trespass. The scientists wish to work unmolested, without fear of archaeological discoveries being disturbed by curios or relic hunters.

A trip there would be fruitless, and the visitor would be sent on his way. The story of how I found the cavern has been related, but in a paragraph: I was journeying down the Colorado River in a boat, alone, looking for mineral. Some forty-two miles up the river from the El Tovar Crystal canyon, I saw on the east wall, stains in the sedimentary formation about 2,000' above the river bed. There was no trail to this point, but I finally reached it with great difficulty.

Above a shelf which hid it from view from the river, was the mouth of the cave. There are steps leading from this entrance some 30 yards to what was, at the time the cavern was inhabited, the level of the river.

When I saw the chisel marks on the wall inside the entrance, I became interested, securing my gun and went in. During that trip I went back several hundred feet along the main passage till I came to the crypt in which I discovered the mummies. One of these I stood up and photographed by flashlight. I gathered a number of relics, which I carried down the Colorado to Yuma, from whence I shipped them to Washington with details of the discovery. Following this, the explorations were undertaken.

The main passageway is about 12' wide, narrowing to nine' toward the farther end. About 57' from the entrance, the first side-passages branch off to the right and left, along which, on both sides, are a number of rooms about the size of ordinary living rooms of today, though some are 30' x 40' square. These are entered by oval-shaped doors and are ventilated by round air spaces through the walls into the passages. The walls are about 3' 6" in thickness. The passages are chiseled or hewn as straight as could be laid out by an engineer.



The ceilings of many of the rooms converge to a center. The side-passages near the entrance run at a sharp angle from the main hall, but toward the rear they gradually reach a right angle in direction. Over 100' from the entrance is the cross-hall, several hundred feet long, in which are found the idol, or image, of the people's God, sitting cross-legged, with a lotus flower or lily in each hand. The cast of the face is oriental, as is the carving style of this cavern. The idol almost resembles Buddha, though the scientists are not certain as to what religious worship it represents.

Taking into consideration everything found thus far, it is possible that this worship most resembles the ancient people of Tibet. Surrounding this idol are smaller images, some very beautiful in form—others crooked-necked and distorted shapes, symbolical, probably, of good and evil.

There are two large cacti with protruding arms, one on each side of the dais on which the [Buddha-like figure] squats. All this is carved out of hard rock resembling marble. In the opposite corner of this cross-hall were found tools of all descriptions, made of copper. These people undoubtedly knew the lost art of hardening this metal, which has been sought by chemists for centuries without result. On a bench running around the workroom was some charcoal and other material probably used in the process.

There is also slag and stuff similar to matte, showing that these ancients smelted ores, but so far no trace of where or how this was done has been discovered, nor the origin of the ore. Among the other finds are vases or urns and cups of copper and gold, made very artistic in design. The pottery work includes enameled ware and glazed vessels.

Another passageway leads to granaries such as are found in the oriental temples. They contain seeds of various kinds. One very large storehouse has not yet been entered, as it is twelve feet high and can be reached only from above. Two copper hooks extend on the edge, which indicates that some sort of ladder was attached.

These granaries are rounded, as the materials of which they are constructed, I think, is a very hard cement. A gray metal is also found in this cavern, which puzzles the scientists, for its identity has not been established. It resembles [the precious metal] platinum. Strewn promiscuously over the floor everywhere are what people call 'tiger eyes', a yellow stone of no great value. Each one is engraved with the head of the Malaysian racial type.



On all the urns, or walls over doorways, and tablets of stone which were found by the idol are the mysterious hieroglyphics the key to which the Smithsonian Institute hopes yet to discover. These writings resemble those on the rocks about this valley. The engraving on the tables probably has something to do with the religion of the people. Similar hieroglyphics have been found in the peninsula of Yucatan, but these are not the same as those found in the Orient. Some believe these cave dwellers built the old canals in the Salt River Valley.

The tomb or crypt in which the mummies were found is one of the largest of the chambers, the walls slanting back at an angle of about 35 degrees. On these are tiers of mummies, each one occupying a separate hewn shelf. At the head of each is a small bench, on which is found copper cups and pieces of broken swords. Some of the mummies are covered with clay, and all are wrapped in a dark fabric.

The urns or cups on the lower tiers are crude, while as the higher shelves are reached, the urns are finer in design, showing a later stage of civilization. It is worthy of note that all the mummies examined so far have proved to be male, no children or females being buried here... [-suggesting] this exterior section was the warrior's barracks.

Among the discoveries no bones of animals have been found, no skins, no clothing, and no bedding. Many of the rooms are bare but for water vessels. One room, about 40' x 700', was probably the main dining hall, for cooking utensils are found here. What these people lived on is a problem, though it is presumed that they came south in the winter and farmed in the valleys, going back north in the summer.

Upwards of 50,000 people could have lived in the caverns comfortably... Undoubtedly a good many thousands of years before the Christian era, a people lived here which reached a high stage of civilization. The chronology of human history is full of gaps. Professor Jordan is much enthused over the discoveries and believes that the find will prove of incalculable value in archaeological work.

One thing I have not spoken of may be of interest. There is one chamber of the passageway to which is not ventilated, and when we approached it a deadly, snaky smell struck us. Our light would not penetrate the gloom, and until stronger ones are available we will not know what the chamber contains. Some say snakes, but others [reject] this idea and think it may contain a deadly gas or chemicals used by the ancients.

No sounds are heard, but it smells snaky just the same. The whole underground installation gives one of shaky nerves the creeps. The gloom is like a weight on one's shoulders, and our flashlights and candles only make the darkness blacker. Imagination can revel in conjectures and ungodly daydreams back through the ages that have elapsed till the mind reels dizzily in space.

In connection with this story, it is notable that among the Hopi Indians the tradition is told that their ancestors once lived in an underworld in the Grand Canyon till dissension arose between the good and the bad, the people of one heart and the people of two hearts.

Machetto, who was their chief, counseled them to leave the underworld, but there was no way out. The chief then caused a tree to grow up and pierce the roof of the underworld, and then the people of one heart climbed out. They tarried by Paisisvai (Red River), which is the Colorado, and grew grain and corn.

They sent out a message to the Temple of the Sun, asking the blessing of peace, good will and rain for people of one heart. That messenger never returned, but today at the Hopi villages at sundown can be seen the old men of the tribe out on the housetops gazing toward the sun, looking for the messenger. When he returns, their lands and ancient dwelling place will be restored to them. That is the [prophetic teaching of the ancient oral] tradition.

Among the engravings of animals in the cave is seen the image of a heart over the spot where it is located. The legend was learned by W.E. Rollins, the artist, during a year spent with the Hopi Indians... The discoveries in the Grand Canyon may throw further light on human evolution and prehistoric ages.

How is it possible this news article was dismissed as fantasy after repeated denials and retractions made by the Smithsonian Institute? The unrecognized hieroglyphic language inscribed on urns, water vessels and tablets, as well as on lintel panels above doorways within the sandstone- and marble-hewn underground complex was identified as an archaic form of logographic Sanskrit script, now known as Paleo-Sanskrit.

Kinkaid's claim of the remoteness of the sandstone tunnel entrance is not consistent with the actual setting. Careful review of historical events in the life of Grand Canyon pioneer John Hance provides unmistakable clues that reveal the concealed location of the tunnel entrance to the grand complex of funerary halls and straight passageways linking hundreds of chambers, identified here for the first time as the *Hopi Complex*:

'God made the Canyon, John Hance the trails. Without the other, neither would be complete.'

So claimed Bucky O'Neill, a famous early Grand Canyon resident and booster. Today Hance is remembered as an almost larger than life figure whose mining and tourism businesses shaped the course of Grand Canyon history and the use of its environment. Over the span of his 35-year stay at the canyon, Hance built a reputation as an explorer, prospector, entrepreneur, and storyteller for which he is still remembered today.

John Hance was born in 1838 in Tennessee. He fought for the Confederacy in the Civil War and was captured by Union forces and imprisoned briefly before heading west. Though he had been a private in the War, by the time he moved to Kansas in the late 1860s he had adopted the title of 'Captain.' In late 1868 he and a brother moved to Arizona to work on a ranch.

At some point over the next decade Hance moved to Williams, Arizona, and by 1883 had made his first visit to the Grand Canyon. He established a homestead between Grandview Point and Moran Point, where he built a cabin and water tank near a spring, one of the few water sources on the South Rim. Here he set to work improving a Havasupai trail into the canyon, which became known as the Old Hance Trail, so that he could prospect for ore and mine asbestos...

Hance is often cited as the first tour guide at the canyon because he led a party down the Old Hance Trail in 1884. Seeing the money to be made off of curious travelers, he established tourist tents beside his cabin in 1885, making him the first 'hotel' operator in the Grandview area of the canyon. Using this trail, he conveyed tourists down to his ranch at the bottom of Hance Canyon. It had steep switchbacks cutting through the more difficult terrain, and once the trail was improved he simply maintained it through use. This old trail was so rough that, as some recalled, he had to lower guests down one section of cliff using ropes.

Despite these difficulties, Hance attracted many famous people from around the country, including artist Thomas Moran, Arizona Senator Henry Ashurst, and Arizona Congressman Carl Hayden, because of his legendary storytelling abilities. Hance is probably the best known and most beloved of the early storytellers/guides at the Grand Canyon. In some ways, Hance was as much an attraction as the Grand Canyon itself, drawing crowds of interested but wary tourists who wanted to see what tall tales he might concoct. As one visitor famously stated, “Any one who comes to the Grand Canyon, and fails to meet Captain John Hance, will miss half the show.”

By the mid-1890s several washouts and rockslides had nearly destroyed the Old Hance Trail so he abandoned it. In its place he constructed the New Hance Trail, sometimes known as the Red Canyon Trail, to reach his mines in Red Canyon. It served as an important eastern access route to the Tonto Platform for prospectors around the turn of the century. Though Hance alone is often credited with building the new trail around 1894, he may have had help from other miners, who claimed to have helped him build it as the south leg of a 27-mile trail they used in their prospecting activities, though there is no evidence to confirm either story.



Hance used the New Hance Trail to transport copper and asbestos out of his mines in the canyon as well as to entertain tourists. Upon finishing the New Hance Trail he helped build a wagon road from his homestead to the Canyon to help ship out ore and bring in tourists. Guests paid Captain Hance one dollar to walk and two dollars to ride one of his mules down the trail. For \$10 he would provide pack animals and his services as a personal guide... The trail, which is only 1' or 2' wide and made of earth and stone, begins about one mile west of Moran Point and descends steeply in a series of switchbacks through the Kaibab, Toroweap, and Coconino formations (above)...

In 1895 Hance either leased or sold his property and rights to the New Hance Trail to William Thurber and J.H. Tolfree, but continued to use the ranch and trail to entertain guests and lead tourists into the canyon. As a condition of the transaction, Hance agreed not to open another trail or act as a guide anywhere within 30 miles of that site. Either way, the property reverted back to Hance by 1900 after Thurber and Tolfree ended their tourist operation. Hance patented his homestead in 1907 and soon after this sold it all to Martin Buggeln.

In the meantime, his storytelling skills had drawn the attention of the Fred Harvey Company, who convinced him to move to Grand Canyon Village in 1906 or 1907 to be the company's official tourist greeter. In this role Hance could spin yarns and tell whoppers that entertained guests from around the country. In the meantime, the abandoned New Hance Trail quickly reverted back to wilderness condition since few people used it any longer. Hance died in Flagstaff in early 1919 [yet his trails have been restored *—by hikers themselves—* despite decades of disuse]...

In 1933 Park Naturalist Edwin McKee declared that the New Hance Trail was one of the two worst trails in the Grand Canyon, since in many places it was nearly impassable either by mule or on foot. By the mid-1950s, the NPS considered the trail virtually destroyed. Several sections were completely gone, other portions were barely visible, and some parts had been obscured by wild burro paths. The NPS therefore decided they would not restore it.

The trail might have faded into a distant memory except for a new generation of hiking enthusiasts that sprang up in the 1960s. These hikers used documents and intuition to recreate the trail. By the 1980s the trail had gained a reputation as one of the most challenging backcountry trails in the Grand Canyon and adventure hikers lobbied to keep it open. In 1988 the NPS decided to minimally maintain the trail in the future, but today warns that it should only be attempted by experienced canyon hikers.

Interesting details offered by the National Park Service in their homage to the long-disregarded trails of John Hance expose a timeline of significant events surrounding the 1908 discovery of the extensive tunnel complex leading straight into the cliff face for over a mile. The sequence of events concerning sale of the Hance Creek 'property' to the US government *reveals a cover-up conducted by the Smithsonian Institute.*



Geopolymer sandstone wall
Ferro-sialate FeO & TiO coating
New Hance trail - Grand Canyon

The Smithsonian operation was undertaken by the US government for thorough documentation of the sacred Paleo-Sanskrit site before total concealment of the extensive and technologically advanced cultural heritage of the Hopi, Havasupai, Zuni and Pima indigenous nations of the region. Destruction of horizontal sandstone terraces has effectively hidden the tunnel entrance from all hikers, having been accomplished after obtaining the property from Hance in 1908 *and contracting him to tell only wild, discrediting stories.*

One of the steepest descents on the Coconino sandstone section of the New Hance trail presents man-made features that have been falsely identified by all modern geologists as 'desert varnish' (above) –which appears to be a specialized geology work for 'gunk', too often applied by clueless field researchers. This is a ferrosialate geopolymer loaded with fine metal particles including iron oxide (FeO) and titanium oxide (TiO).

Geopolymer sandstone steps
Ferro-sialate FeO & TiO wall coating
New Hance trail - Grand Canyon





Geopolymer sandstone
New Hance trail - Grand Canyon



Growing tourist traffic of recreational hikers making use of the rugged trail enjoy spectacular views of the different layers of the grand geological formations from which the canyon is named –yet none have ever recognized the remnants of artificial sandstone formed by the creative hands of ancient humanity.

Megalithic blocks and geometric pavement plates composed of geopolymer sandstone are situated along a series of terraced ledges, elevated $\frac{2}{3}$ of the total depth of the Grand Canyon, along the present-day New Hance Trail that is easily accessed from the South Rim area just 1 mile west of Moran Point.

The ancient, original meaning of the Paleo-Sanskrit tribal name ‘Hopi’ has been long forgotten, yet can be clearly translated according to the Schildmann decipherment.¹ ‘Hopi’ is comprised of 4 distinct hieroglyphs reading: **h o p i**, meaning “Imperceptible, oh, (the) presence (of) This” —a clear votive statement playfully referring to the inaudible presence of infrasound standing wave resonance: *the Universal ‘Aum’*.



The piezoelectric property of fine quartz grains comprising these sandstone formations converts incident acoustic energy into a localized EM field surrounding both natural and artificial stonework features. Titanium- and iron-loaded surface coatings were also used as mortar between the synthetic sandstone blocks, conferring ferromagnetic and paramagnetic properties to the artificial stones for EM amplification.

The hidden tunnel entrance to the Hopi Complex, on the New Hance trail² in the Grand Canyon, Arizona (36.0104645°N, 111.9303528°W, above) is situated 7,300 miles from the great Pyramid of present-day Giza, Egypt; comprising 29.33% of Earth’s mean circumference ($\frac{183}{625}$). *Exact placement at the 36° North latitude* confers enhanced reception of focused infrasound standing wave resonance at the complex.

This great circle distance from the Giza Orion Pyramid Complex is the very same sacred resonant interval shared by the Hupa Pyramid Complex in the Siskiyou Mountains of present-day Northern California. *The stunning consistency of geometric relationships among Atlantean temple complexes is unmistakable.*

The obfuscated tunnel entrance sits just below the remains of an Atlantean geopolymer sandstone platform at Moran Point, offering a spectacular scenic view of the broadest section of the Grand Canyon (overleaf).

Nestled neatly in one of the most breath-taking sections of the New Hance trail is an enclosed area where both natural and artificial geopolymer sandstone plates have been dislodged from their original locations more than a century ago for the purpose of hiding the narrow tunnel entrance to the sacred Hopi Complex.

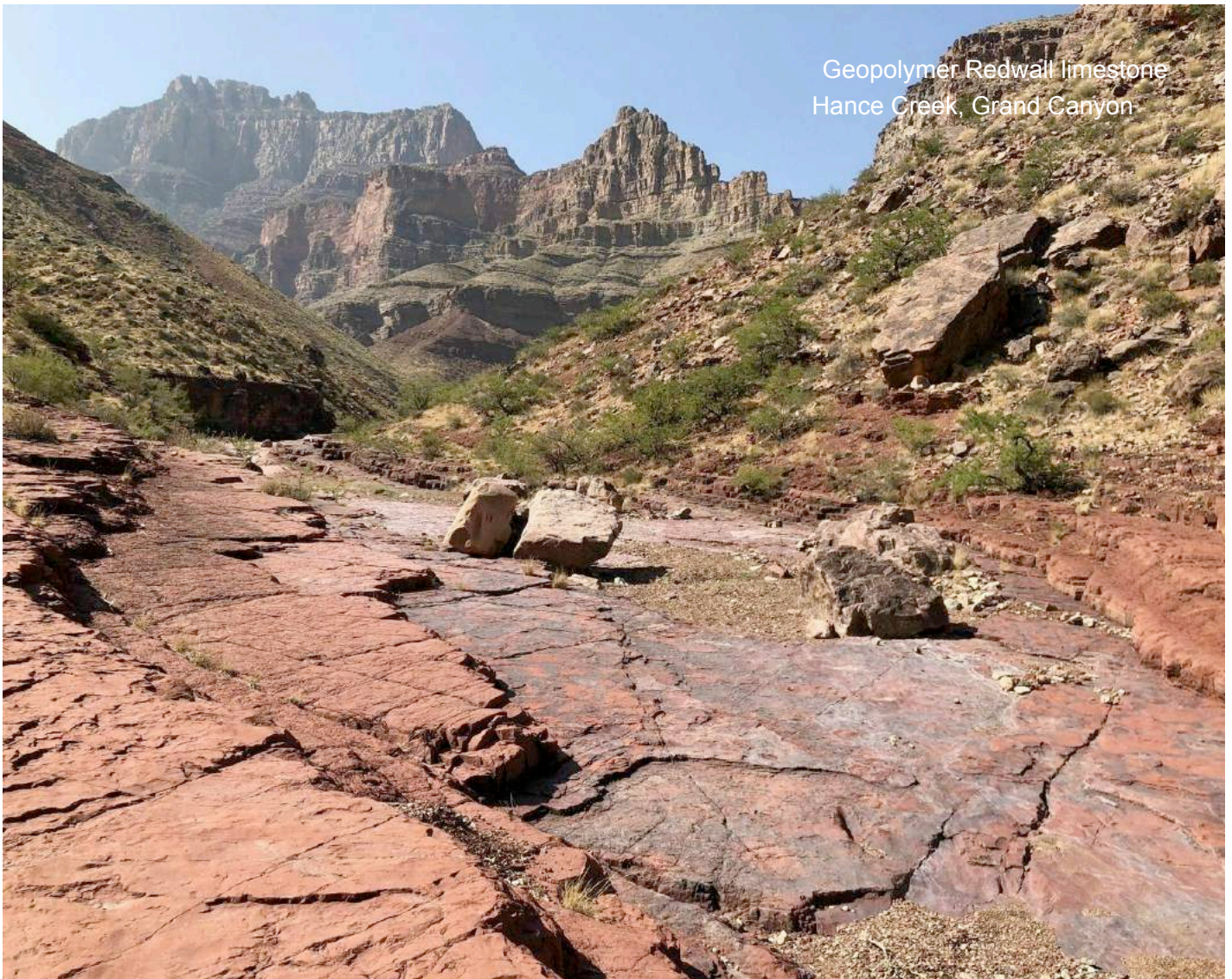
The jumble of dislodged sandstone plates can be clearly discerned from undisturbed areas of natural sandstone by virtue of regular horizontal bedding planes. Thorough excavation of the overturned debris piles right down to the underlying bedrock formation will undoubtedly reveal the hidden tunnel entrance.



Early 20th century reports by investigators of the site included another significant detail that was not fully understood at the time of its discovery. A long tunnel leading away from the primary set of underground chambers was not searched due to an overwhelming stench that grew stronger as the tunnel proceeded. This finding reveals the presence of giant Sasquatch hybrids of the Baal Consortium of extraterrestrial humanoids, together conducting aerial predation activities involving UFO abductions in northern Arizona.



Geopolymer sandstone platform
Moran Point, Grand Canyon



Geopolymer Redwall limestone
Hance Creek, Grand Canyon



Geopolymer Redwall limestone
Hance Creek, Grand Canyon

Metallurgical details provided in the 1909 Arizona Gazette article could not be understood at that time, yet perfectly conform to Atlantean techniques for resonant transmutation of metals identified at contemporary Paleo-Sanskrit sites in the Western US, as well as in Ecuador, Bolivia, Turkey and the Baltic Sea. Products of an iron-to-titanium ($\text{Fe} \rightarrow \text{Ti}$) resonant conversion process were mixed as powders into geopolymer stones and coatings, whereas copper items were hardened in a copper-to-aurichalcum ($\text{Cu} \rightarrow \text{a-Ti}_3\text{Au}$) process:

In the opposite corner of this cross-hall were found tools of all descriptions, made of copper. These people undoubtedly knew the lost art of hardening this metal, which has been sought by chemists for centuries... On a bench running around the workroom was some charcoal and other material probably used in the process.

There is also slag and stuff similar to matte, showing that these ancients smelted ores, but so far no trace of where or how this was done has been discovered, nor the origin of the ore... A gray metal is also found in this cavern, which puzzles the scientists, for its identity has not been established. It resembles [the precious metal] platinum.

Basic furnace processes for resonant conversion of $\text{Fe} \rightarrow \text{Ti}$ and $\text{Cu} \rightarrow \text{Ti}_3\text{Au}$ replicated by this author confirm the unknown gray metal as *titanium steel*, produced from iron ore processed with the addition of carbon from charcoal. Hard copper tools found in the underground cross-hall chamber possessed *red gold Ti_3Au coatings*.

One very large storehouse has not yet been entered, as it is twelve feet high and can be reached only from above. Two copper hooks extend on the edge, which indicates that some sort of ladder was attached. These granaries are rounded, as the materials of which they are constructed, I think, is a very hard cement.

Modern development of alkali and acidic chemistry required for geopolymer stone manufacturing has replicated the Atlantean construction method used to create the immense grain silos in the Hopi Complex. The same techniques were applied in resurfacing of artificial limestone pavement layers (above). *Clear disparities in the texture and composition of these layers reveals their synthetic origin as geopolymers, as determinable by microscopic comparison of the stone's elevated metallic content versus natural samples.*



Bighorn fire, June 2020
Pima Pyramid ~29,000bp
S. Catalina Mountains, Arizona

The natural piezoelectric property of minerals comprising sandstone, limestone, andesite and basalt rocks enables conversion of incident acoustic waves into an encompassing EM field. This special effect becomes amplified by Atlantean semiconductor geopolymers, specially manufactured with a high content of fine metallic particles, including ferromagnetic, paramagnetic such as iron, nickel, titanium –in combination with piezoelectric, pyromagnetic and pyroelectric mineral constituents such as tourmaline and pyrite.

This synthetic stone was called 'firestone' for its ability to spark plasma in the air above the pyramid faces during phases of increased planetary infrasound resonance. The recent Bighorn fire of early June, 2020 on Mount Lemmon, Arizona³ follows a pattern of similar spontaneous piezoelectric fires that include the wildfires there in early June, 2010. *This area has been scorched repeatedly as incoming energy increases.*

A distinctive pattern of unexplained missing persons cases have recently occurred in the immediate vicinity of Mount Lemmon, Arizona, implicating the covert underground presence of giant ET humanoid predators of the Baal syndicate. One notable case involved 35-year-old Donald Shelenberger, who disappeared while preparing for a hike with a friend departing from Mount Lemmon on July 3, 1994:

Donald Shelenberger was making arrangements to meet a friend on Mount Lemmon in the northeast section of Tucson, Arizona. They were going to meet and hike the mountain. Donald was never seen again and details about this case are few.⁴

Almost a decade later, another person apparently vanished while hiking in the same area. Joan Phyllis Shelton, aged 65, disappeared from the area adjacent to Mount Lemmon on February 7, 2004:

In 2004, Joan Shelton was staying at an assisted living facility on East Sunrise Drive in Tucson, Arizona. The facility is very close to a mountainous area between the Santa Catalina Mountains and Saguaro National Park. It is located just under Mount Lemmon.

Joan checked out of the facility at 2:10pm, and people were unsure exactly where she was going. She was an avid hiker, and its possible she went into the mountains. A large search of the area failed to find Joan Shelton. Joan's body has never been found.⁵

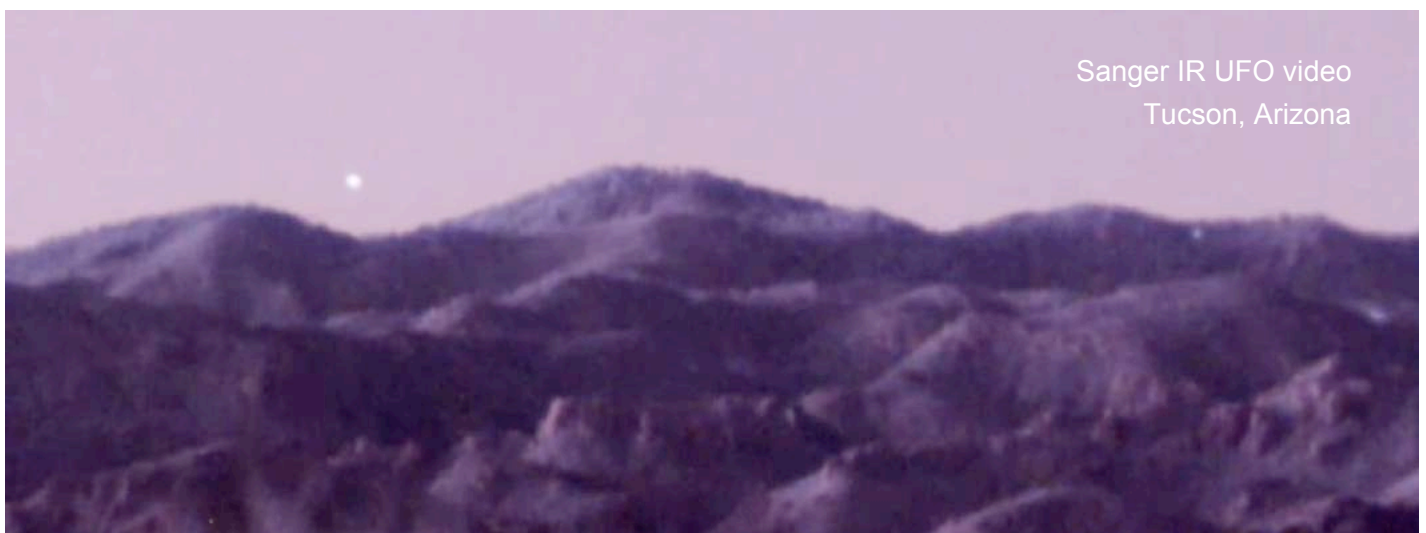
Nearly 5 years later on January 21, 2009, 61-year-old Dwight Alan Riggs disappeared from an area several miles from Mount Lemmon while searching for ancient artifacts of the Atlantean ancestral mother-culture:

Dwight Riggs lived in a rural area on the outskirts of Tucson, Arizona. His residence abutted an area between the Santa Catalina Mountains and Saguaro National Park, and area that can be quite remote. This is also an area where a number of people have gone missing.

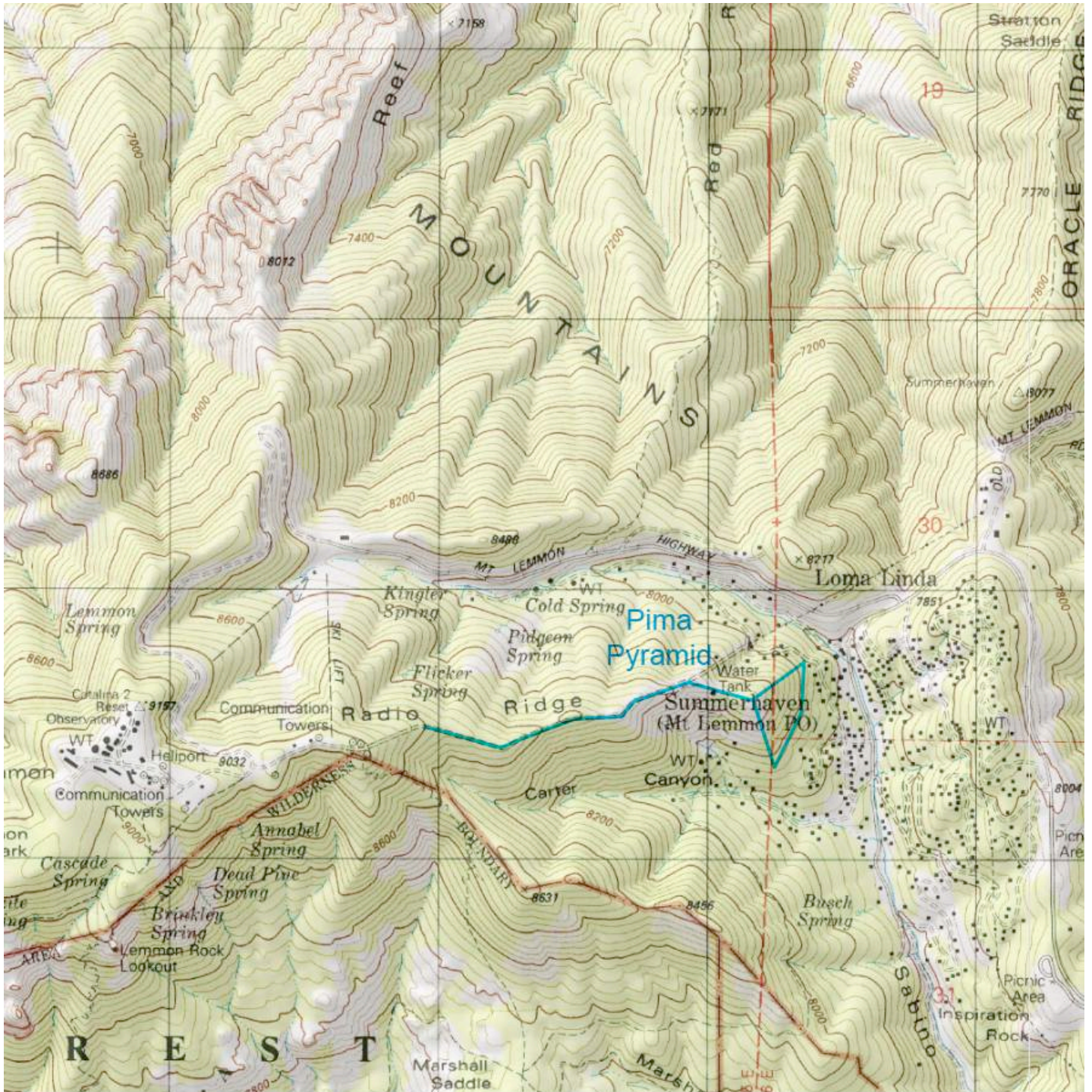
Dwight had a deep interest in archeology and took daily hikes behind his house. He was last seen on January 21, 2009, but not reported missing for several days. Law enforcement does not believe foul play was involved in his disappearance, but they cannot explain where he might be located.⁶

The consistent set of circumstances surrounding the serial abduction of lone hikers in the vicinity of Mount Lemmon points directly to the same UFO plasma beam levitation technology used by the Baal, revealing the mountain itself was refaçaded as a pyramid in geopolymer sandstone by Atlantean temple builders.

First identified here as the Pima Pyramid Complex, aerial activity above the site has left many awestruck eyewitnesses with many poor-quality UFO videos. However, several high-quality videos have been able to record the regular traffic of brightly illuminated plasma craft flying from one hidden base to another.



From his distant perspective viewing from the Tucson area on the night of September 28, 2018, Tom Sanger recorded IR video of a bright UFO flying over the Santa Catalina Mountains, heading from the direction of Mt. Lemmon to disappear behind Mt. Bigelow (video still above).⁷



Mount Lemmon is identified here as the Pima Pyramid Complex, according to the sacred name of the ancestral people of the region, with language and traditions extending back directly to the builders of the sandstone pyramid complex that has long been misidentified as an entirely natural mountain formation.

Pima Pyramid Complex, Arizona (32.4428907°N, 110.7616991°W, above) is located 7,468 miles from the Great Pyramid of present-day Giza, Egypt. *This resonant distance comprises 30.00% of Earth's mean circumference ($3/10$), reflecting the 2 : 3 : 5 Fibonacci ratio alignment.*

This exact distance interval is shared by various other ancient Atlantean temples structures around the world, including the megalithic granite temple of Machu Picchu, located in present-day Peru, as well as the immense Ohum Pyramid Complex of On, located in Central Ecuador near the modern town of La Maná.

Metaphysics author Frank Juszczyk began writing in the mid 1980s about the same time he had a very close encounter with a small UFO near Silver City, New Mexico. Located nearby to the northeast of Silver City rises the unmistakable pyramidal silhouette of Gomez peak (below). This area has become known for several unusual sightings and encounters, including one particularly unusual case of a *levitating humanoid*.

In 1938, in Silver City, New Mexico, 4 children including Anne D. Alley and her brother witnessed a flying humanoid slowly hovering in the sky above them, as recalled in a letter written decades after, in 1980:



Geopolymer sandstone façade
Gomez Peak, New Mexico

“I must have been around nine, that beautiful age when we don’t question the things that happen around us... My brother, who is about 2¹/₂ years younger than I, and two other little friends and I were playing in the yard. It was twilight... and we were at the extreme end of the front yard, which, in those days, seemed like a very large area. It was that moment before lights go on anywhere and everything seems grey.

The four of us were playing quietly and then we happened to look up. We all saw him. He was dressed all in grey and he even seemed grey; he was drifting or floating at treetop level. The thing I remember the most about him was that he seemed to be wearing a belt which was wide and had points sticking out of it. He also seemed to be wearing a cap (à la Flash Gordon).”

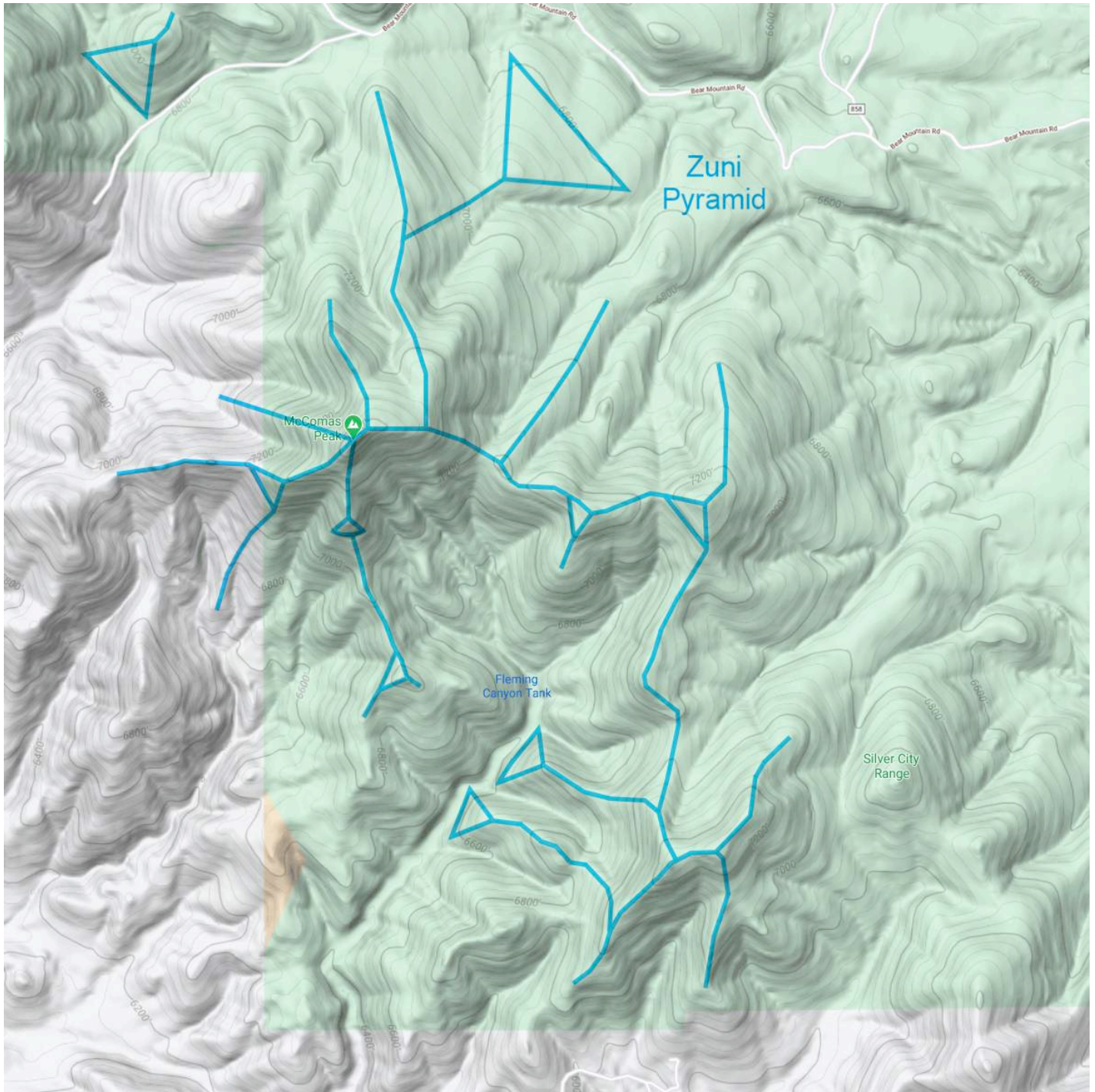
The children stood and stared at the odd figure as he drifted across the sky. They didn’t tell their mother about what they had seen when she returned from visiting a neighbor.

“About 15 years ago I was telling my husband about it. When I did, I questioned myself –perhaps I had had a dream. But just in case, I called my brother. By now I was about 35 and he about 32. I prefaced my conversation by telling him that I had a strange story to tell and that perhaps it had all been a dream, but that I thought that in about 1938 I had seen a man fly over our heads.”

Her brother stopped her and proceeded to describe the whole incident, which he remembered quite clearly, in detail.⁸

This fascinating 1938 child eyewitness account of a grey-skinned humanoid figure levitating above a tree-line near Silver City, New Mexico includes a clear the description of the levitation apparatus as a wide belt with pointed radial antennae extending outward in all directions. The detailed and accurate description closely echoes similar accounts of levitating figures from other regions of the world, often seen wearing some glowing metallic apparatus formed as a harness around the legs, waist or chest of the floating entities.

As with many such cases, the temporary nature of the sightings suggests they are the undesired result of a malfunction of HHO plasma invisibility cloaking of the figure that precludes observation by human eyes. However, monitoring of such flying entities is now technically enabled by IR scopes and video cameras.



The many accounts of UFOs and flying humanoids in the vicinity of Silver City over the last many decades reveal the hidden subterranean presence of the Baal Consortium, composed of a variety of extraterrestrial predatory humanoid species under control of the giant reptilian humanoids referred to by 20th century trance medium Edgar Cayce as the Sons of Belial; and in the Christian Bible as Baal, Beelzebub, etc.,

According to Cayce, the Sons of Belial induced the catastrophic demise of the Atlantean and Lemurian civilizations, *effectively razing the great temple cities of that era while occupying the underground network.*

The Zuni Pyramid Complex, just west of Silver City, New Mexico (32.8023532°N, 108.3404675°W, above) is located 7,367 miles from the Great Pyramid of Giza, Egypt. This resonant distance comprises 29.60% of Earth's mean circumference ($^{37}/_{125}$), offering enhanced reception of infrasound standing wave resonance by proper geopositioning within the global nonlinear field focused by the Atlantean pyramid network.

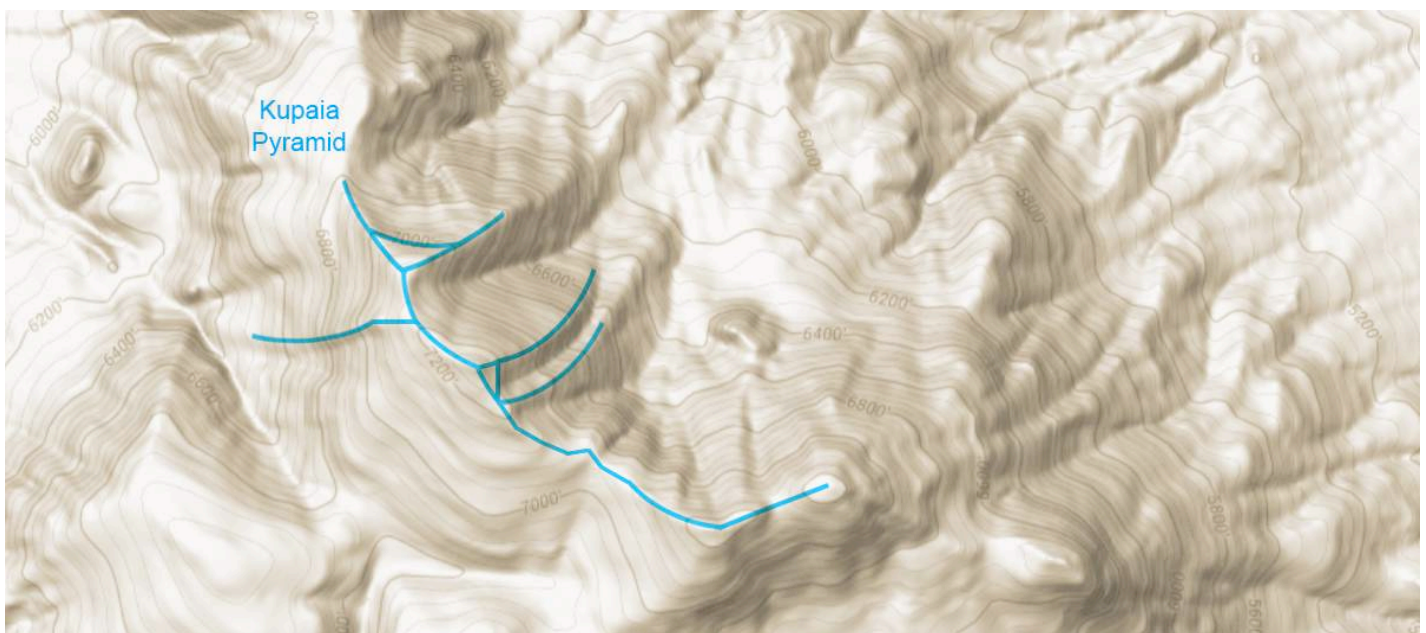
The 1947 UFO crash in Roswell, New Mexico was accompanied by another crash between Corona and Socorro, New Mexico.⁹ In 1964, a Socorro resident reported witnessing a UFO landing, and drew symbols he observed on the craft –*Paleo-Sanskrit hieroglyphs*: **adhi-as kar-as** , meaning “for delivering workings” (below).

In late afternoon on Friday, April 24, 1964, Socorro Police Sergeant Lonnie Zamora departed his cruiser on a rough and rocky dirt road to investigate an unidentified flying object, which came to rest in an arroyo south of Socorro... What Sergeant Zamora witnessed at about 5:45pm was an ‘egg-shaped craft’ traveling into Socorro from the south. It was later reported... as having been witnessed (in flight) by 5 tourists traveling through Socorro. Zamora... stated he witnessed a bluish flame and a loud roar coming from the direction of the arroyo.



Zamora approached the area where he believed the craft had landed. Zamora later stated that he had first seen the object from about 150 yards and believed it to be a car or some sort of vehicle in need of assistance. Zamora then radioed the Sheriff’s Office about a possible accident he would be investigating. Zamora then contacted New Mexico State Police Sergeant Samuel Chavez, someone who Zamora trusted to assist in the investigation. After requesting the assistance of NMSP Sergeant Chavez, Zamora once again began approaching the object.

At about 50 feet from the object, Zamora noted seeing landing gear and a red insignia, which he later drew for authorities. Zamora then noted bright blue flames and another loud roar until ultimately the object began lifting away from its resting place. Following the incident, many local residents visited the sight and witnessed not only burned bushes but also landing gear depressions in the ground.¹⁰



Kupaia Pyramid Complex, west of Socorro, New Mexico (34.07574°N, 106.9686°W, above) is located 7,249 miles from the Great Pyramid of present-day Giza, Egypt; comprising 29.12% of the Earth’s mean circumference (¹⁸²/₆₂₅). *Exact placement at the 34th North latitude* confers enhanced infrasound reception.



1947 UFO crash
Plains of Agustin, NM



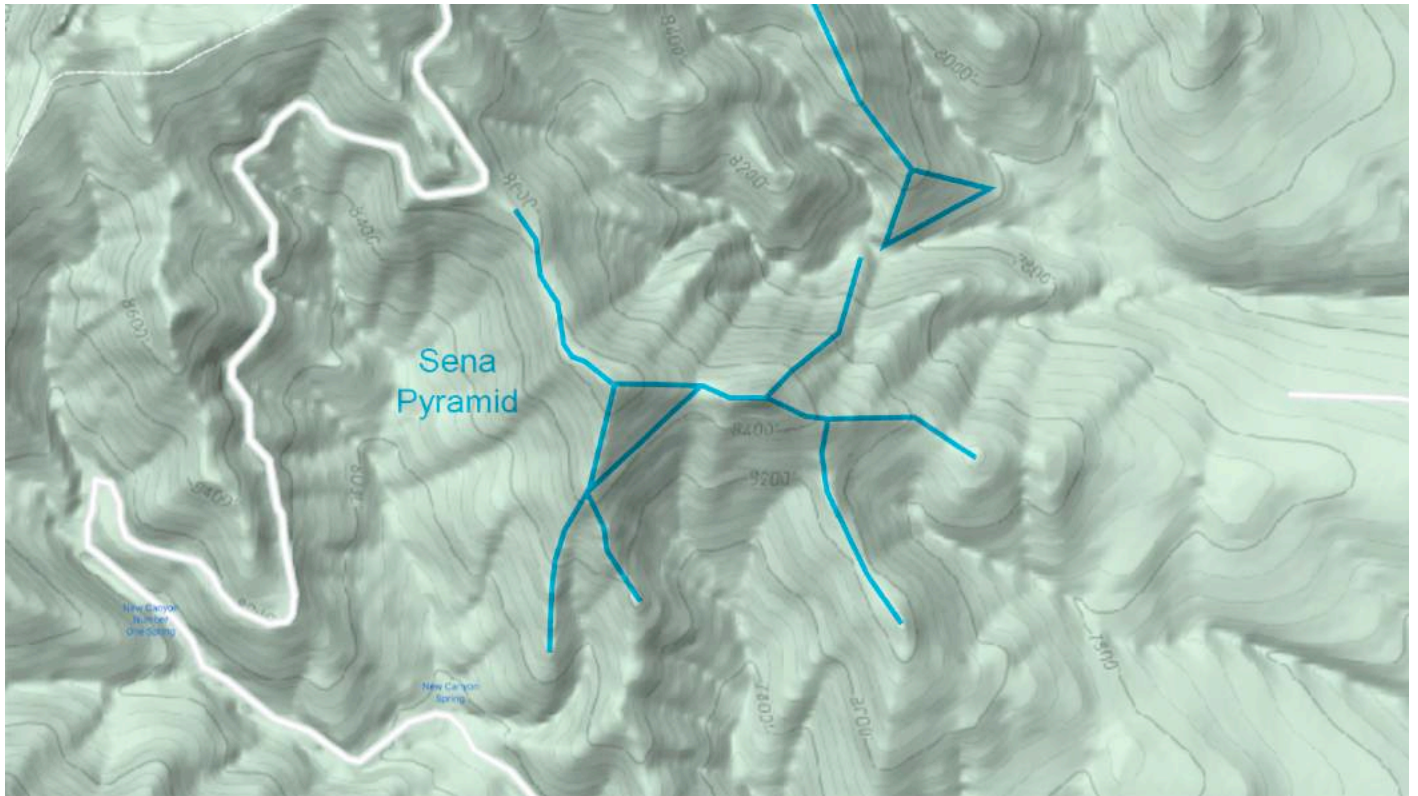
Poor quality 9mm film recorded the spectacular 1947 daytime crash of a brightly glowing UFO disc as it shattered into thousands of fragments on the Plains of San Agustin, New Mexico (@2:01, below).¹¹ Prevalent UFO activity surrounds nearby Atlantean geopolymer sandstone temple structures built into the landscape.

Navical Pyramid Complex, New Mexico (33.99563°N, 108.10481°W, above) is located 7,292 miles from the Great Pyramid of present-day Giza, Egypt; comprising 29.29% of the Earth's mean circumference (¹⁸²/₆₂₅). Furthermore, *exact geopositioning at the 34° North latitude* enhances infrasound standing wave reception.

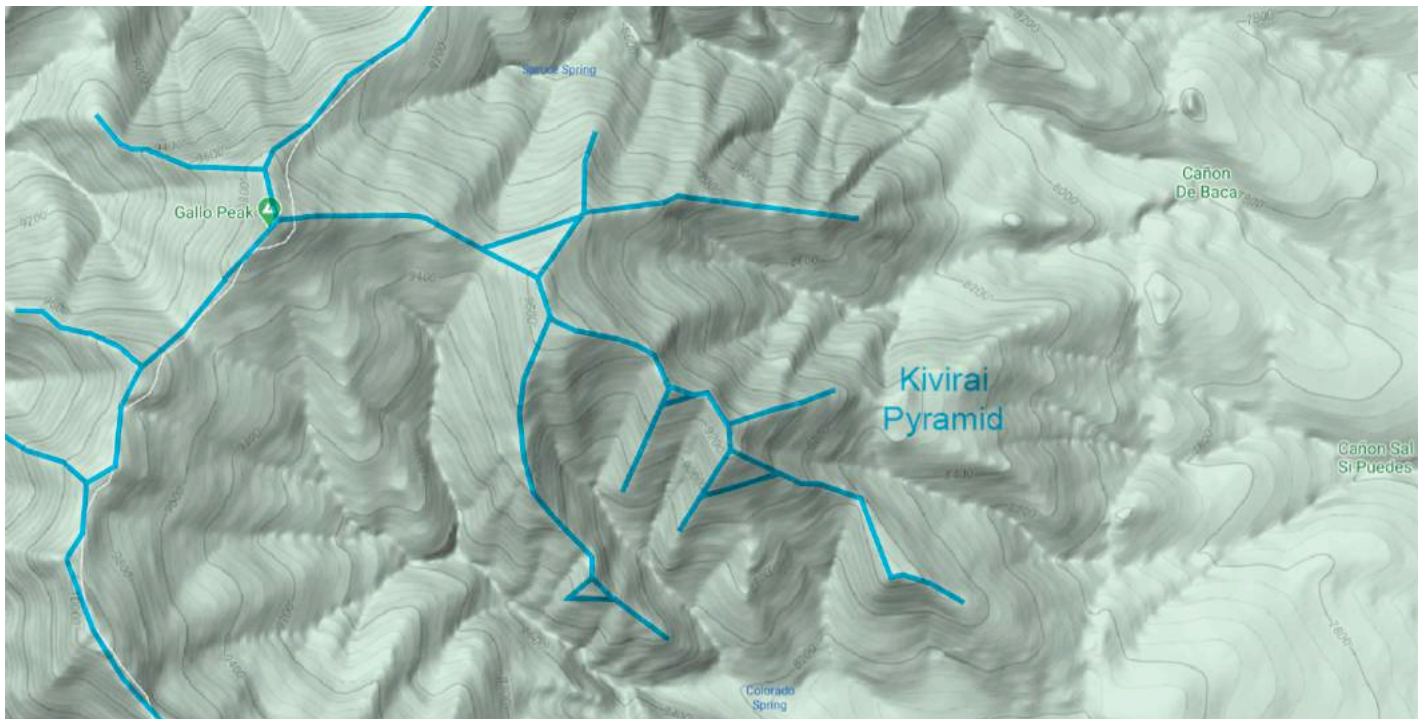
UFO abduction cases also reveal ancient cities identified here as the Sena and Kivirai Pyramid Complexes. Hidden underground UFO facilities provide the only viable explanation for the case of Celsa Lucero, a deaf woman who vanished while collecting pine nuts in the Manzano Mountains back on November 9, 1941:

Ms. Celsa Lucero, 51, of Los Duranes, disappeared while hunting pitons on the Manzano Mountains... on Nov. 9... [S]he wandered away from the camp in El Canyon de la Carolina, on the west slope of the Manzanos about eight miles south of the Tigers Canyon intersection of the Cedre Canyon Road with Highway 66... Ms. Lucero had gone to the mountains to pick pitons with her sister, Mrs. Consuelo Lucero, a cousin, Aurelio Lucero, and 5 children...

She had not returned when the cousin... notified friends and officers and the search continued... for days, with more than 350 persons participating at times, including State Police, sheriff's officers, forest rangers, CCC workers, New Mexico Mounted Patrolmen, Navajo Indians and volunteers. The search was halted several times by early snow... [before being concluded] several weeks [later]... when heavy snow blanketed the area for winter.¹²



Sena Pyramid Complex, New Mexico (34.6752447°N, 106.4075827°W, above) is located 7,197 miles from the Great Pyramid of present-day Giza, Egypt; comprising 28.92% of Earth's mean circumference ($^{36}/_{125}$). Continuing southward along this range, another distinctive set of pyramids with ridgeline walkways is found:



Kivirai Pyramid Complex, New Mexico (34.6309462°N, 106.4227854°W, above) is located 7,200 miles from the Great Pyramid of present-day Giza, Egypt; comprising 28.92% of Earth's mean circumference ($^{36}/_{125}$). Geoposition alignments of the Atlantean pyramid network reflect infrasound standing waves into a nodal distribution pattern facilitating global telecommunications, EM power storage and weather modification.

A growing number of explained disappearances have occurred in recent times near the Pecos River, New Mexico that include several individuals extending back nearly 40 years; both men and women of various ages that disappeared, leaving all their belongings behind –*never to be seen again*. These abductions conform to the pervasive pattern of serial predation of the technologically advanced Baal Consortium.

On September 13, 1982, 33-year-old Ann Linda Riffin was reported missing when she did not show up for work following a brief road trip by herself. A week later, after her abandoned car was found, it became clear that Ann had disappeared near the Pecos River off Highway 3, between Tres Rios and Mora Creek:

On September 21, 1982, Anne's vehicle was found stuck in a ditch on a dirt road a short distance from Highway 3. The vehicle was locked, and there did not appear to be any foul play involved. Officers searched the car and determined that the only item missing was Ann's purse... [but] police still have no new leads.¹³

Given our present knowledge of the UFO beam abduction process involving use of HHO plasma beam systems for rapid, silent levitation of entire vehicles and their occupants off the ground –even while moving at high speed– Ann was either lifted into the air near her car, or was removed from her car *right through the roof*. Nearly 15 years later, Robert Amos Browning went missing in the vicinity of Pecos, New Mexico:

On May 15, 1997, the truck of 19-year-old Robert Amos Browning was found near Monastery Lake, which is close to the Benedictine Monastery in Pecos. Browning, who was 5' 11" and weighed around 140 pounds, had been living out of his vehicle. Inside his truck were his possessions, passport, identification, food, fishing equipment, sleeping bag, clothes and a small amount of money.

The police attested that there was no sign of foul play at where he had camped. Browning's [campsite] location is roughly 6-8 miles as-the-crow-flies from [‘Devil’s Road’ 63A]... No trace of Browning has ever turned up... no clues were found as in clothes, body, or prints.¹⁴

Almost 16 months later, in the same immediate area, another unexplained disappearance occurred; this time involving an elderly visitor to the Benedictine Monastery from Arkansas whose car was found in a location that she could not possibly have driven to, suggesting it was placed there by UFO levitation beam:



On August 31, 1998, Emma Frances Tresp, age 71, vanished outside of Pecos, New Mexico. Her car was later found on Pecos County Service Road 63A, which is known to some as ‘Devil’s Road’. At the time of her disappearance Emma had no health issues, she was an experienced world traveler and was on her way to the Pecos Benedictine Monastery for a retreat. Emma had been there before, at least 2-3 times, so she knew her way well...

Emma's car was found on a very steep incline, how it got there, no idea. Before getting to that point, Emma would have to travel over some obstacles, rocks, small trenches that should have gotten her car stuck... Planes, helicopters, searchers on foot, horseback and in all-terrain-vehicles looked for Emma. Tragically, the lady from Arkansas or any trace of her was never found. What could have become of her?

Emma's footprints were found around her car, but that was [all the evidence that could be found]. The search dogs could find no scent or footprints beyond her auto. None of the trackers could find any clues in which direction she had gone... But it looks by the evidence that Emma did not get past a few feet from her car, before she just vanished. That is where her footprints end a few feet from her car as in circling her auto...

State Police investigator David Martinez who worked the Tresp case had this say about this mystery, "It's like she vanished off the face of the Earth, there are no answers." As-the-crow-flies, Emma vanished about 6-8 miles away from where Mel Nadel vanished [many years later in 2009]. Two miles in front of Emma was the abandoned Devil's Tower, beyond that at most was a 3 mile walk to a huge, easily seen campus... run by the Baptist church.

5-6 miles away from Emma's abduction site is Route 66, where in 1973, Steven Cross, Larry McGee and Janet McGee were abducted overnight and subsequently found by searchers in the area beyond where the Devil's Road 63A ends. Many have heard of ‘La Llorona’. –*a New Mexico ‘banshee’ that is often heard while driving on county dirt roads*. People swear that the sound seemed to come from right inside the car. Emma Tresp's car was found on the ‘Devil’s Road’ 63A several miles south of La Llorona Lane... On June 6, 2017 –a bright white UFO (not a satellite, not a helicopter, not the moon) was seen– estimated about 5-8 miles north of the area where Tresp and others have vanished. A brightly lit craft hovered in the sky after dawn for 10-15 minutes then disappeared...¹⁵

Another oddity concerns the exact spot where Emma Tresp disappeared from, the tri-field meter screamed loudly, while the Gieger radiation counter mostly kept fluctuating between 75-125 hits/minute and the dowsing rods kept crossing. What could cause so many anomalies in our equipment?¹⁶

The broad range of electronic malfunctions and high radioactivity measurements experienced by investigators in the vicinity of the Pecos River and the 'Devil's Road' 63A are clear evidence of interference by invisible aerial drones overhead. Predators of the Baal syndicate operate several small spherical probes to keep the entire area under 24-hour surveillance from the underground base hidden below the area.



Geopolymer sandstone blocks near the Pecos River were cast >13,000 years ago by Atlantean temple builders when this land was known as 'Zu', according to trance statements made by American psychic medium Edgar Cayce nearly a century ago. The synthetic origin of these stones can be easily confirmed by microscopic analysis of the blocks and their metallic coatings, *implicating a vast underground system of chambers connected by tunnel networks where UFO abduction victims are taken, with all their effects.*

On September 6, 2009, Melvin ("Mel") Isadore Nadel, aged 61, disappeared from Elk Mountain during a hunt while camping, in the Santa Fe National Forest. While this victim was taken from within 2 miles of 'Devil's Road' 63A, Interestingly, Mel's arm tattoos included Satanic symbols associated with heavy metal music: a dragon, a pentagram, Baphomet, a Tae Kwon Do symbol, mouth with vampire fangs, and guitar¹⁷:



Melvin "Mel" Nadel was last seen on September 6, 2009 in the Elk Mountain area of the Santa Fe National Forest near Pecos, New Mexico. Nadel met two friends at their camp that afternoon for an evening of archery hunting. At approximately 4:30pm Nadel left camp intending to hike a short distance from camp to hunt from the ground, returning back to camp by dark. However, when his hunting partners returned to camp around dark, Nadel was nowhere to be found.

Nadel rarely hunted far from camp after becoming lost a few years earlier on a hunting trip in the Jemez Mountains. On that occasion Nadel had panicked, running through the woods, firing his gun, until his buddies found him. Since then he was not known to go without his GPS, but his GPS was found locked in his jeep near the campsite, along with his cellphone and backpack.

The afternoon Nadel disappeared he was wearing a camouflage turtleneck, shirt and pants, a Lucky 13 pendant he designed when he ran a jewelry store and a black Seiko watch. He was thought to be carrying a camouflage Martin bow, black-and-white zebra-striped arrows and a .44 special revolver.

State police and volunteer search-and-rescue teams scoured the rough terrain for days finding no clues to what might have happened to Nadel. Nine months later, on June 16, Taos Search and Rescue conducted another search. To date, no trace of Mel has been found. Mel's family and friends do not believe he left on his own accord. He had no financial or legal troubles and was very close to his 18-year-old daughter whom he home schooled...¹⁸

The [initial] search was hampered just after the disappearance with the dropping of four to five inches of snow. The canines [that had been] brought into camp started their search by walking directly down the trail where Melvin stated he was going. At the 150-yard marker they stopped. This validates that Melvin walked down the trail, but canines don't just stop without justification. The canines would not proceed further than the 150 yards.¹⁹

The unusual findings of searchers in the Nadel disappearance closely match those details from previous cases that implicated UFO abduction by aerial HHO plasma beam levitation. Clear indications from the Search & Rescue canine tracking unit confirm the exact spot where Nadel was lifted into the air, as observed in the footprints found around the abandoned cars of Emma Tresp in '98 and Ann Riffin in '82.

The series of eerily similar circumstances presented by these UFO abduction cases, extending over many decades in time, correspond to the predatory behaviors of the Baal ET consortium, as cross-referenced by dozens of other aerial predation clusters at other well-hidden ancient Atlantean temple city complexes.

A more recent victim of UFO beam abduction, Stanley Vigil was taken from near the Pecos River and Devil's Road 63A and never seen alive again after snow and fog quickly disoriented him in November of 2017:

On November 7, 2017, Stanley Vigil went deer hunting with a family member and friends in the Barillas Peak area east of Pecos, New Mexico. This is an area which can be considered the southern area of the mountain chain that run behind Pecos, past Santa Fe and into the Hyde Park area of the Sangre De Christos Mountains...

Stanley on November 7th was in a 4-wheel drive vehicle with family and pals who were going hunting, when he saw a deer by the side of the dirt road they were on. He told the driver to stop so he could go after the deer. The vehicle stopped, Stanley went into the tree line after the deer, and the vehicle was parked a little further up the road. The rest of the group disembarked and went to where Stanley had gone after the deer.

The group heard two gunshots, so they assumed Stanley had shot his quarry. After a few minutes, Stanley had not returned to the road and the group went into the trees and fields shouting and looking for Stanley. Gunshots were fired to give Stanley a sound beacon, a return shot was heard but it was farther away from the first two gunshots.

Stanley did not reach the dirt road or meet up with the people looking for him that were now off the road in the glades and small fields. Just then sleet started to fall on the area. The search continued and Stanley was reported missing and the State Police and Search & Rescue were called in. Later, family, pals and volunteers mobilized and the area was thoroughly searched, the man was not found.

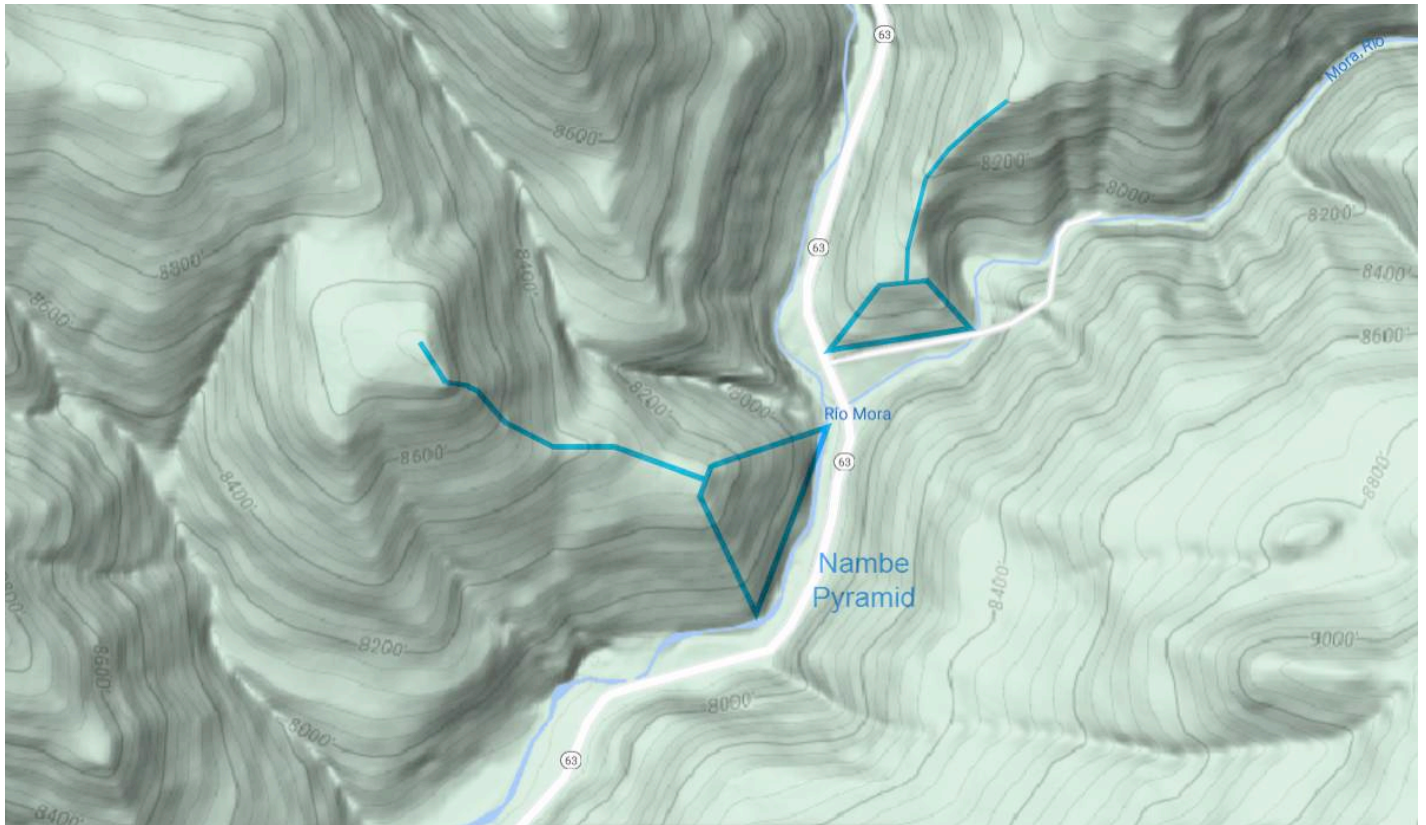
On the night of the 8th –*the night after Vigil had disappeared*– a man thought to be Stanley came to a mobile home in the village of San Juan, which is in the Pecos area... On November 21st the State Police suspended their search for Stanley Vigil. The search was conducted by people on foot, horseback, and by helicopter...

At the trailer that Stanley reached... [on the night of the 8th, an understandably] frightened woman with her kids did not want to let Stanley in because of his pistol and... in the middle of the night. Stanley told the lady inside the trailer he was lost... [but she] explained she would call the police. Stanley then gave a strange reply: "No. Nooooo, they are after me"... Stanley then quickly left... In the past and this is on the there side of the Barillas peak or north of this peak, UFOs have been sighted, as well as military helicopters. Lights above and in the trees that cannot be accounted for have been witnessed and paranormal outlines or ghosts prowling among the trees have been reported by hunters.²⁰

Over four-and-a-half months later, on March 31, 2018 the body of Stanley Vigil was recovered from the Pecos River by authorities, after having been sighted by a local fisherman.²¹ Police information and related news media reports only provided the basic details that Vigil had suffered head wounds and broken ribs, *but did not provide an estimated time of death based on the state of decomposition of the body when found.*

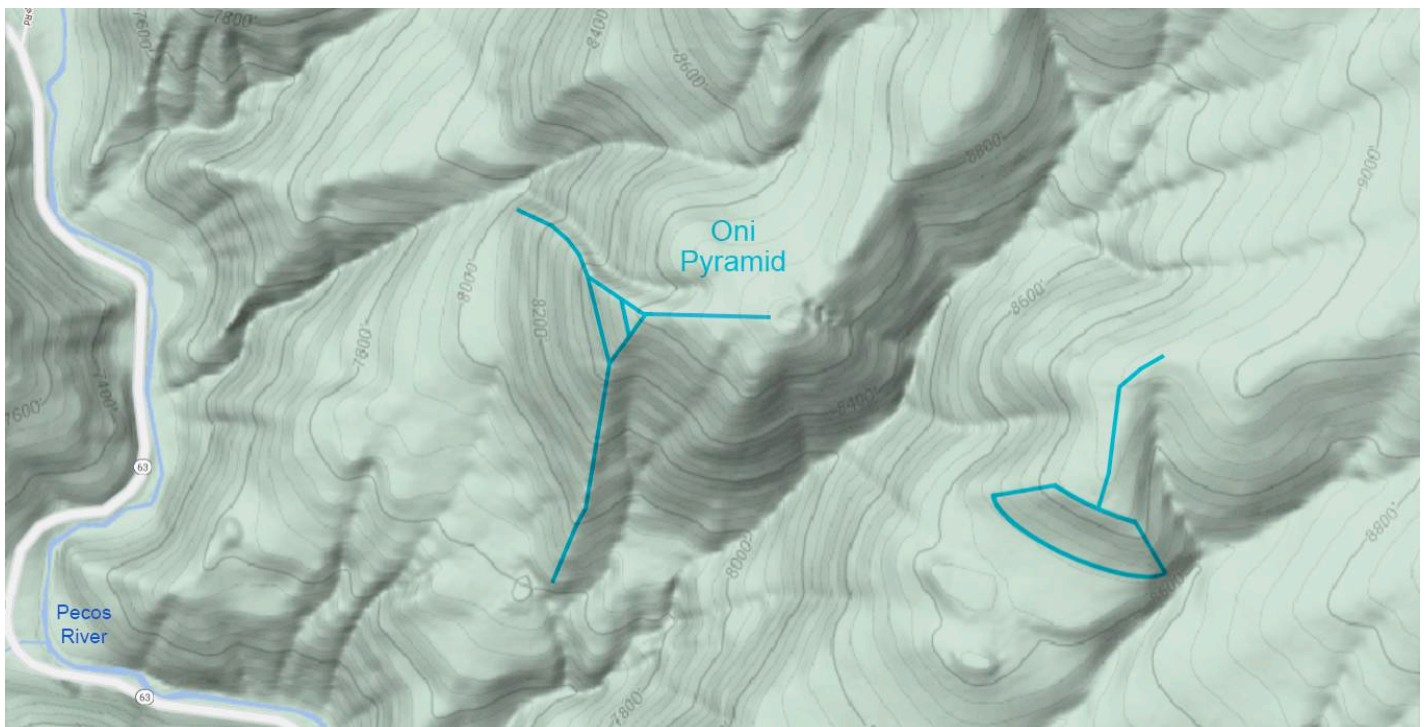
These facts support the commonly held contention that police authorities are actively withholding the most disturbing details of the Stanley Vigil UFO abduction/murder case revealed by the coroner's autopsy. The obvious questions that have not been addressed by police investigators and leave the Vigil family without closure include:

- 1) Why have the police not revealed the complete details of the Stanley Vigil case?
- 2) Who was Stanley referring to when he said "They are after me..." –*UFO entities?*
- 3) Where was Stanley during the intervening time between November 7th and March 31st?
- 4) Why have so many other unexplained disappearances happened in this exact location, with so many oddly similar circumstances directly implicating aerial abduction?



Nambe Pyramid, located at the junction of Mora Creek with the Pecos River, New Mexico (35.7751203°N, 105.662703°W, above) is located 7,111 miles from the Great Pyramid of present-day Giza, Egypt, corresponding to 28.57% of Earth's mean circumference ($\frac{2}{7}$). This resonant distance ensures efficient reception of focused infrasound standing waves transduced from planetary infrasound by the pyramids.

The ancient Atlantean origin of the local tribal name 'Nambe' is used to identify this temple site; composed of a trio of Paleo-Sanskrit hieroglyphs, altogether reading: **na m be**, meaning "Void (of the) quick activity."





Tewa Pyramid Complex, New Mexico (36.6931895°N, 105.185819°W, above) is located 7,045 miles from the Great Pyramid of present-day Giza, Egypt. This resonant distance comprises 28.30% of Earth's mean circumference ($7^{1/250}$). Symmetrical, planar temple façades composed of piezoelectric quartz sands effectively converts incident infrasound waves from the Great Pyramid into strong EM fields at the site.

Despite surface weathering of the relatively soft sandstone over millennia, a distinct network of ridgeline stairways and walkway platforms can be made out, linking one major temple façade to another. Predatory activity by giant Sasquatch of the Baal ET consortium extends far back in time for many thousands of years, with more recent activity being evinced by boneyards accumulated over decades of dumped animal kills:

Mike was prospecting in northern New Mexico in late September, 2002... [at] a strange location he stumbled onto and later showed me a few of the photos he took. Below a steep slope on a semi-flat rocky area, strewn amongst the typical high desert trees, was a massive boneyard.

This boneyard according to Mike was over 200 feet long and many of the bones had washed into a ravine below the dump, making the number of bones even greater than what he could see. The remains were a sampling of most of the [local] mammals... such as deer, elk, bighorn sheep, bear, mountain lion, horse, cattle, etc. Antlers and horns were broken and left on partial skulls –so that ruled out poachers and trophy hunters.



On some of the kills made in recent years, the hides and flesh still clung to the bones, so that ruled out meat hunters. The location is too far from a rough 4-wheel-drive forest service road, for any truck to use this as a dump-site. Mike searched for any intact skulls that he could take home, but most were all or partially crushed. His guess is something has been dumping carcasses here for over 50 years... and thinks the predator has to be big and powerful, either dragging the carcasses long distances through the forest or dropping the carcasses from above.²²

Despite the long and dark history of serial predation at these Atlantean temple sites by the Sons of Baal, votive names for each pyramid complex have been given to honor the Paleo-Sanskrit heritage of the Sons of the Law of One –the original builders of these underground complexes; *the indigenous tribal peoples*.

| Tribe/Name | Paleo-Sanskrit | Translation |
|------------|-------------------|--|
| Hopi | h o p i | imperceptible, oh, (the) inner joy (of) This |
| Oraibi | o r a i b i | oh, (the) granting (of) This, (of the) sound of This |
| Moenkopi | m o e n k o p i | quickly, oh, That egg (of the) inner joy (of) This |
| Hotvela | h o t v e l a | ho, protection (of the) knowing (of) beholding |
| Sipáapuni | s i p a a p u n i | Yours protecting, ah, (the) purifying presence (of) This |
| Havasupai | h a v a s u p a i | Those willing, (the) good protecting (of) This |
| Zuni | z u n i | the Infinite presence (of) This |
| Pima | p i m a | (the) inner joy (of) This state |
| Arapaho | a r a p a h o | ah, granting, protecting, ho |
| Apache | a p a c h e | ah, protecting (the) pledge (of) submission |
| Lakota | l a k o t a | beholding (the) egg (of the) endowing |
| Maya | m a y a | (the) state commencing |
| Kupaia | k u p a i a | whereby approaching |
| Nauvical | n a u v i c a l | spaceships rescinding |
| Sena | s e n a | servicing (the) Void |
| Kivirai | k i v i r a i | energy from (the) granting (of) This |
| Nambe | n a m b e | (the) Void (of) quick activity |
| Oni | o n i | (the) ascent (of) This |
| Tewa | t e w a | protection (of) submission marking, ah |
| Aetna | a e t n a | (the) making (of the) opening |
| Ute | u t e | oh, (of) Theirs |
| Ekara | e k a r a | the One granting |
| Mena | m e n a | (the) bleating (of the) Void |
| Garudavan | G a r u d a v a n | Garuda resounding |

Tim Edwards UFO video
Salida, Colorado - 1995

UFOs & cattle mutilations
San Luis Valley. Colorado

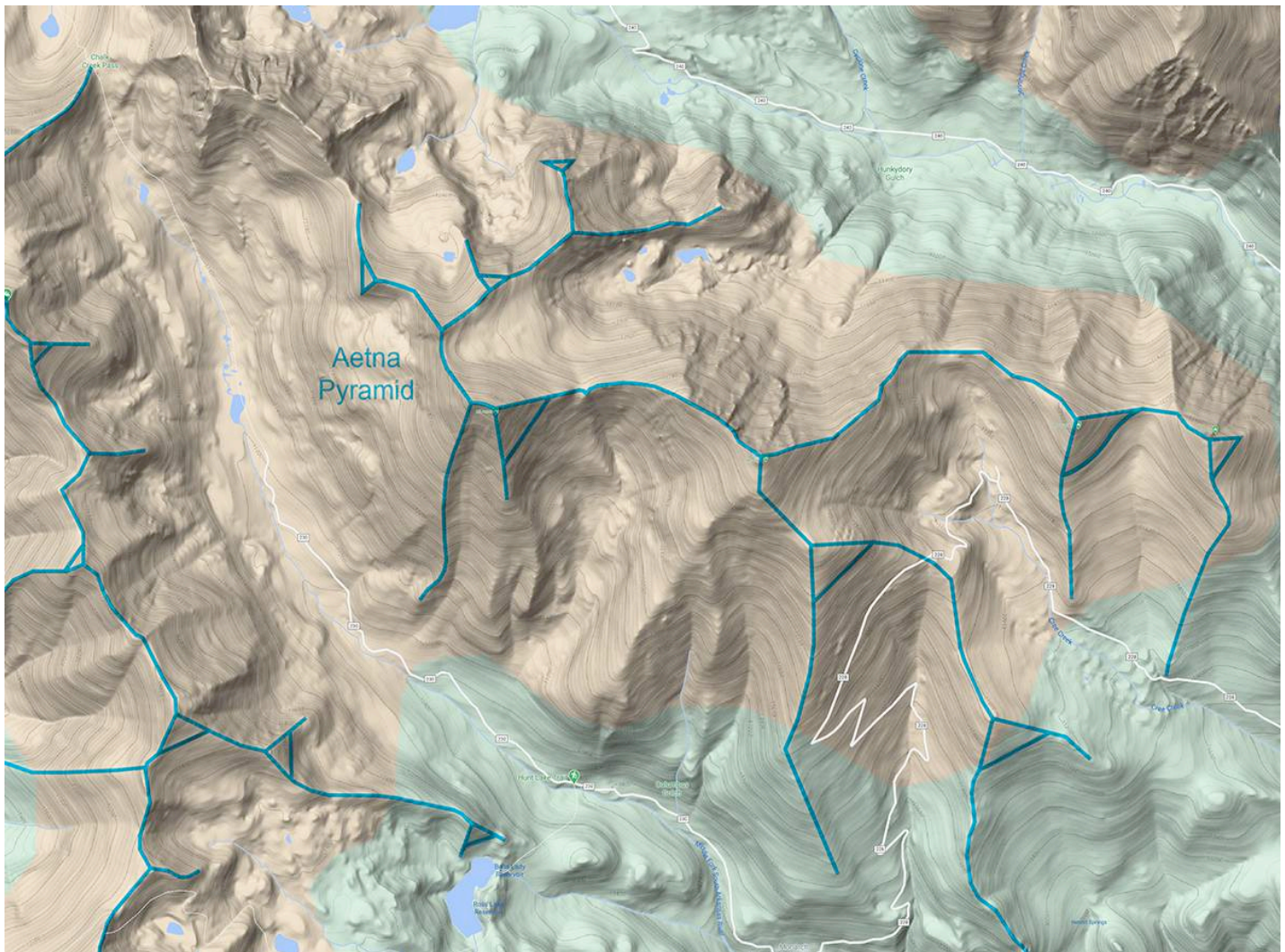
SALIDA, CO
MT AETNA, CO
TRINIDAD, CO
ALBUQUERQUE, NM

Another significant cluster of predatory UFO activity surrounds the San Luis Valley of Colorado, as featured on 'UFO Hunters: Mysterious Aliens Linked to Missing Cows' (S3, E6).²³ A clear, daylight UFO sighting by Brandy Edwards, with her sister and father Tim Edwards took place in 1995, in Salida, Colorado.²⁴ Tim Edwards recorded over an hour of footage of a large, brightly glowing 'cigar-shaped object' high in the sky overhead, interacting with several smaller white, luminous craft (video still above).²⁵

Extending far to the southeast of the town of Salida, in the vicinity of Trinidad, Colorado, cattle mutilations have sporadically appeared for several decades in the pastures of Tom Miller,²⁶ Manuel Sanchez, Mike Duran and many others:²⁷

As with the region's abundance of cattle mutilation cases, the unexplained disappearance of 8-year-old Evan Thompson from a campground northwest of Canon City, Colorado on May 27, 2006 belongs to a cluster of UFO beam abductions. Thompson was a mentally-disabled child who was found after 4 days lost in the wilderness by searchers using bloodhounds, airplanes helicopters and ground teams. The boy claimed a crow flew up to him while he was waiting, and he followed it off into the woods. He stated that he slept in a tree one night, under a log for another, and in a cave for the third. It was concluded he walked 11+ miles.²⁸

An effective disorientation tactic often used in UFO abductions involves application of induced amnesia in combination with repeatedly moving the victim from one location to another without their awareness. As seen in so many cases in other parts of North America and the world, the many victims of UFO abductions are taken to hidden underground bases converted from ancient Atlantean temple city complexes.



Aetna Pyramid Complex, Colorado (38.5864862°N, 106.3199292°W, above) is located 6,978 miles from the Great Pyramid of present-day Giza, Egypt; a resonant distance comprising 28.03% of Earth's mean circumference ($^{28}/_{100}$). As observed of so many major Atlantean Pyramid complexes from the same era of high technology, this special distance alignment provides for efficient reception of infrasound resonance.

The ancient Paleo-Sanskrit votive name of the highest peak in this rugged mountain group 'Aetna' is composed of two hieroglyphs, together reading: **ae tna** , meaning "(the) making (of the) opening".

Geopolymer sandstone platform
Ute Promontory, Colorado



6315 Rd



Geopolymer sandstone platform
Ekara Temple, Colorado

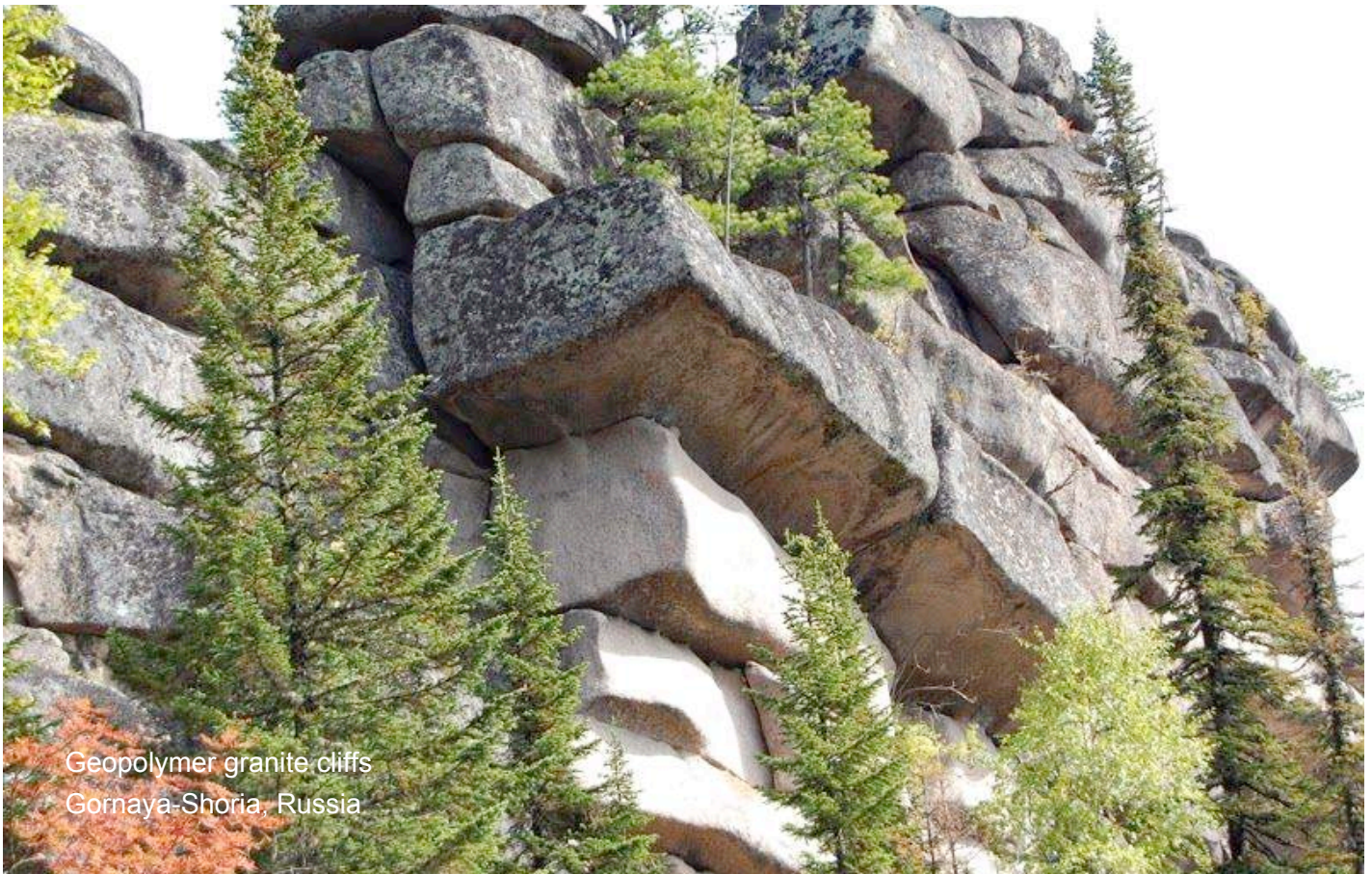
The location of yet another ancient megalithic temple city of the technologically advanced Atlantean civilization has been exposed by the disappearance of 19-year-old hiker Raymond Walter Wiggs III on October 24, 2003 from the Grassy Hills area near Little Gypsum Valley, Colorado.²⁹ Raymond vanished while hiking with friends at night, and no trace was ever recovered by intensive land and air searches.

Ute Promontory near Little Gypsum Valley, Colorado (38.1818827°N, 108.8673581°W, opposite), is located 7,081 miles from the Great Pyramid of present-day Giza, Egypt. This resonant distance comprises 28.45% of Earth's mean circumference ($\frac{57}{200}$), offering enhanced infrasound reception at the sacred site. Nearby Ekara temple (38.1728176°N, 108.8606046°W, above) is situated a mile southeast of the Ute Promontory, associated with underground temples entered from Dolores Canyon (38.1752258°N, 108.8580289°W).

The Ute Promontory is typical of geopolymer temple constructions of the second phase of the Atlantean high civilization lasting from ~51,000-30,000bp, which were significantly larger in scale yet more crudely designed than those of the third period (~30,000-13,000bp) exemplified by the Visoko Pyramid Complex in present-day Bosnia and the Padang Pyramid located on the modern-day Island of Java, Indonesia.

Throughout the second period of the Atlantean civilization, grand psychoacoustic architecture was embedded in spectacular natural stone formations that were significantly augmented by the building of giant meandering walls composed of megalithic geopolymer blocks along prominent mountain ridgelines. This completely unrecognized style of ridgeline wall temple was mentioned during a session by trance medium Edgar Cayce on February 16, 1932 in reference to ancient antediluvian builders in Peru (Reading 364-4):

We also find that entering into Og, or those peoples that later became the beginning of the Inca, or Ohum, that builded the walls across the mountains in this period... Hence we find in those various portions of the world even in the present day, some form of that as was presented by those peoples in *that great development* in this, the Eden of the world.³⁰

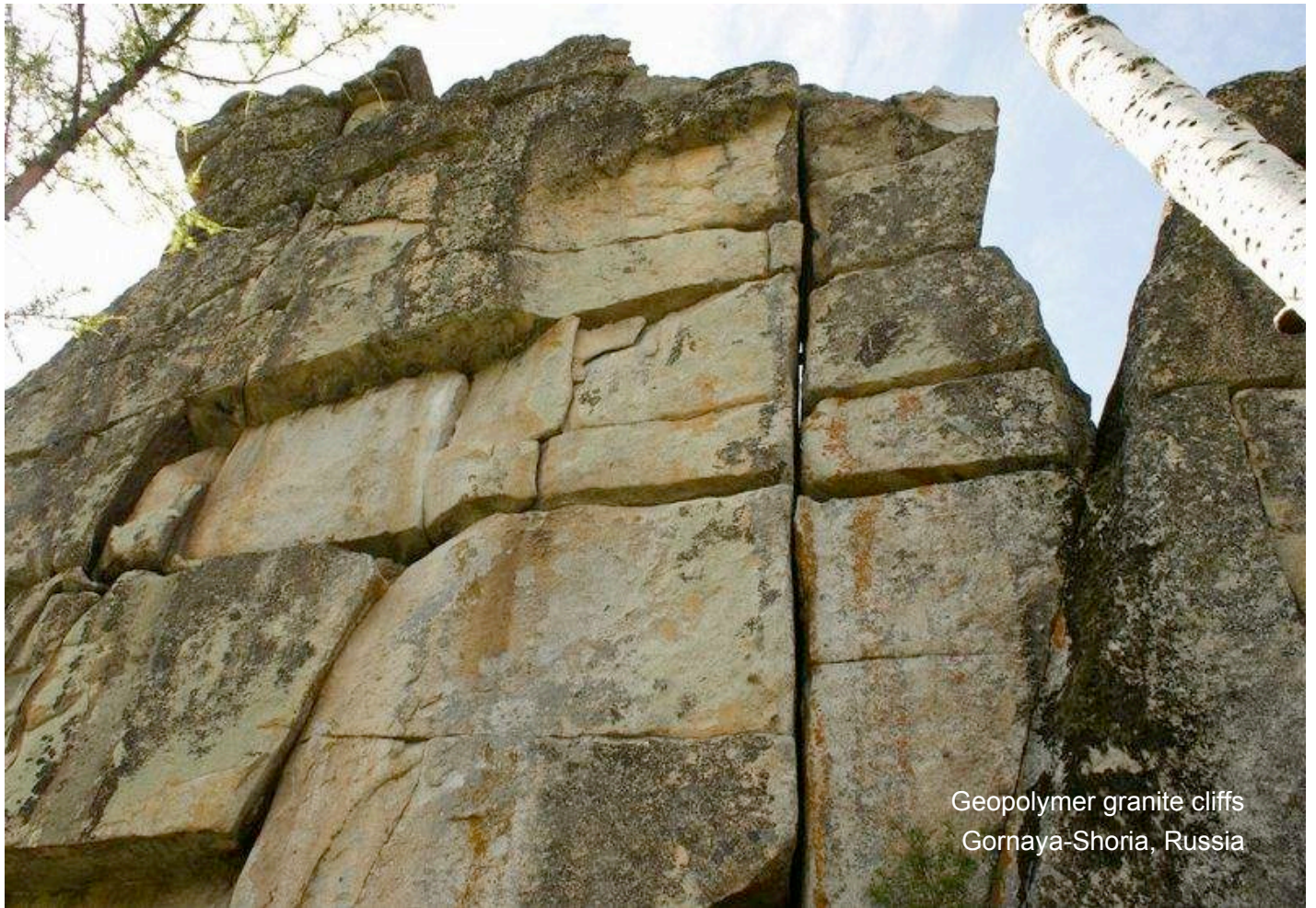


Geopolymer granite cliffs
Gornaya-Shoria, Russia

One of the most stunning examples of the ridgeline wall temples described by Edgar Cayce has been identified in the Shoria region of the Ural Mountains of Siberia. A series of overhangs were purposefully created (above), while many large circular depressions once collected water condensation (opposite).

Horizontal stacks of magnetic geopolymer granite megaliths of enormous size extend for hundreds of meters along a ridgeline wall extension apparently cast using highly sophisticated technical means on an incomprehensible scale –suggesting the use of aerial technology for executing massive casting operations.

Gornaya Shoriya megalithic wall, Siberia (52.927179°N, 88.046749°E) is located 3,244 miles from the Great Pyramid of present-day Giza, Egypt; comprising 13.03% of Earth's mean circumference ($^{13}/_{100}$). Global geopositioning near the 53° North latitude confers enhanced reception of infrasound standing wave resonance focused by axis-symmetric geometries of the Orion Pyramid Complex.



Geopolymer granite cliffs
Gornaya-Shoria, Russia



Geopolymer granite wall
Gornaya-Shoria, Russia



Investigators of the Gornaya-Shoria Complex have discovered another type of depression cast in the artificial granite megaliths *that conform to the exact shape of the human body* (above). Lying down inside the large depression, visitors are able to find a comfortable position for resting the head, back and arms inside (below). Such features were specifically made for human use, whereas the general scale of the structures shows the construction incorporates additional design features for both giants and gnomes.





Geopolymer granite wall
Surak-Kuilum, Russia

Quite similar megalithic structures located in the Kuilum Mountains in the Altai region of Siberia were revealed by drone aerial video surveys in 2016.³¹ The stacked configuration of a long megalithic wall rising from the ridgeline shows similar features, including circular depressions on the uppermost blocks (below).

The Surak-Kuilum Megalithic Complex, in the Altai region of Siberia (53.277111°N, 88.582067°E) is located 3,269 miles from the Great Pyramid of present-day Giza, Egypt, corresponding to 13.13% of Earth's mean circumference. The Surak-Kuilum wall is located 33 miles east-northeast of the Gornaya-Shoria Complex.





Geopolymer dolerite megaliths
Conawego Falls, Pennsylvania

Artificial Atlanteanean stoneworks from various eras display hallmark features that are consistently seen throughout the world at sacred sites displaying perfect alignment within the global network of ancient pyramids. Circular depressions observed at Atlantean temple sites from the second phase of development (51,000-30,000bp) are also seen in finer synthetic stonework from the third and final phase of high society.

Spectacular examples of beautifully flowing geopolymer sculptures have been observed during droughts in southern Pennsylvania, when extremely low water levels on the Susquehanna River expose sections of the ancient riverbed. On such occasions, megalithic blocks of magnetic geopolymer dolerite have been photographed at Conawego Falls, presenting finely cast seams and depressions in the mesmerizing works.





Geopolymer dolerite megaliths
Conawego Falls, Pennsylvania

Conawego Falls, on the Susquehanna River in southern Pennsylvania (40.1259893°N, 76.7187718°W, above) is located 5,759 miles from the Great Pyramid of present-day Giza, Egypt. This distance comprises 23.14% of Earth's mean circumference ($^{29}/_{125}$), facilitating enhanced reception of infrasound standing wave resonance focused at the site by the axis-symmetric geometry of the Orion Pyramid Complex.

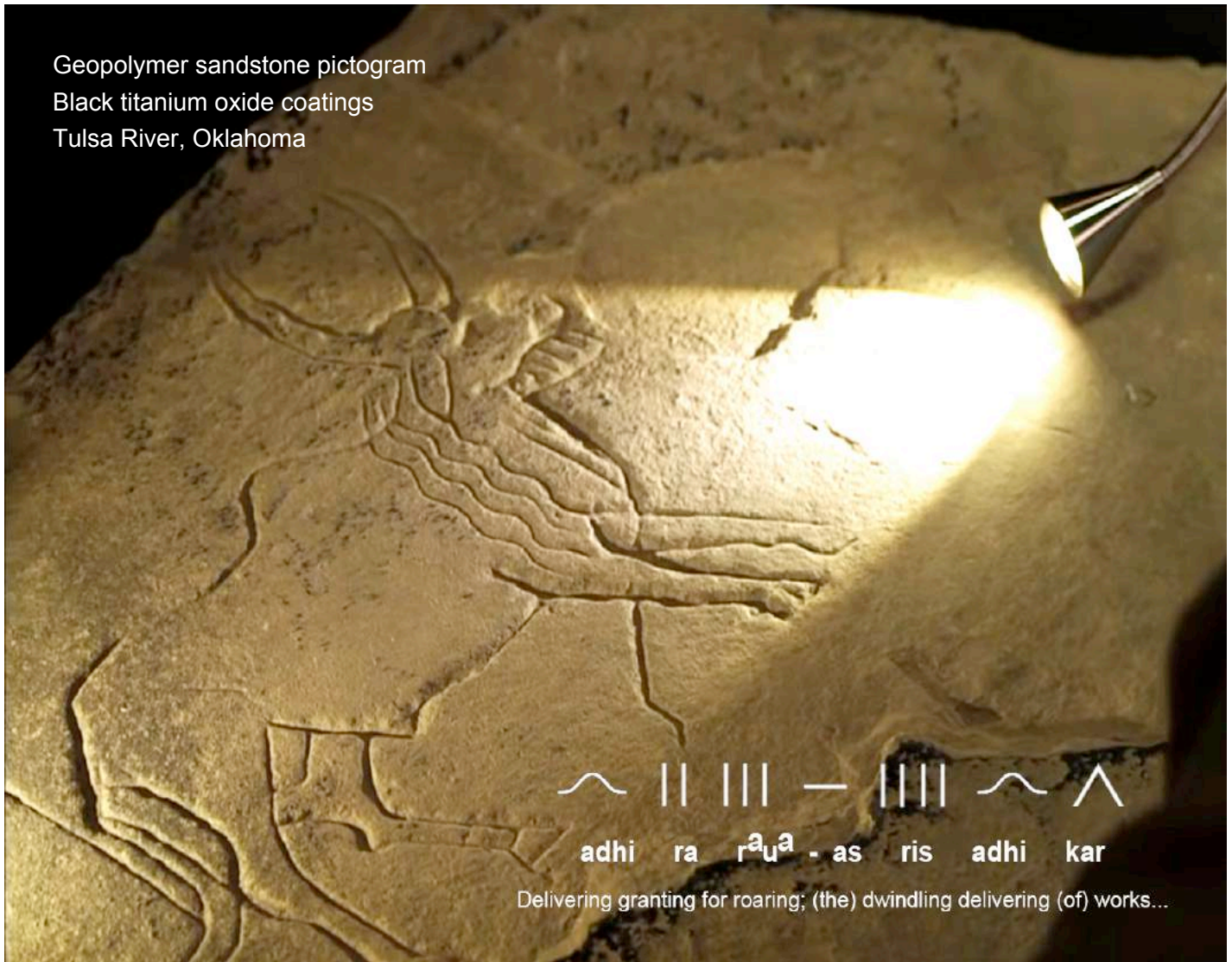


Geopolymer dolerite megaliths
Reflective titanium coatings
Conawego Falls, Pennsylvania

Geopolymer dolerite megaliths
Reflective titanium coatings
Conawego Falls, Pennsylvania



The highly specialized metallic coatings on the massive dolerite megaliths at Conawego Falls contain fine titanium powder,³² being consistent with findings at many other Atlantean sites from the third and final phase of Atlantis, lasting from ~30,000-13,000bp. During this extended period of high technological development in resonant metallurgy, intensified production of titanium was achieved through surprisingly simple furnace processes enabling the low-energy nuclear conversion of iron into titanium on demand.



This simple relief image of a bull with long horns is rendered in geopolymer sandstone through a combination of geometric figures corresponding to hieroglyphic ligatures of the Paleo-Sanskrit language. The elevated horns of the bull are not rendered in a realistic format, but *–like the bulls at Lascaux Cave in France from the same time period–* are presented as simple arcs reading: **adhi ra** , meaning “delivering granting”.

Likewise, the fat hump of back of the bull repeats the ‘adhi’ hieroglyph for “delivering”, while the mane is depicted unnaturally long as a series of four nested wavy lines that reads: **ris adhi** , meaning “dwindling delivering”. The beard of the bull presents a repeating series of straight lines reading as ‘raua’ or “roaring”.

Another notable hieroglyph is seen forming the angular crease of the animal’s groin, signifying the word ‘kar’ or “works” over the reproductive organs of the bull *in reference to the fertility benefits of resonant stone*.

When read together, the ligatures of the bull pictogram form a votive phrase: **adhi ra raua-as ris adhi kar** meaning “Delivering granting for roaring, (the) dwindling delivering (of) works” (above), clearly referencing the perpetually diminishing intensity of planetary infrasound resonance echoed throughout the Atlantean era.



Geopolymer sandstone pictogram
Black titanium oxide coatings
Tulsa River, Oklahoma

The many Paleo-Sanskrit geometric signs woven into the Tulsa bull pictogram are virtually identical in format to the stunning Zurvan wall murals of European and Indonesian Caves –re-façaded in geopolymer limestone. The megalith found in Tulsa, Oklahoma displays thick surface layers of black titanium oxide (TiO) visible below the pictogram, with large TiO particles distributed throughout the synthetic sandstone matrix (above).

The geopolymer sandstone megalith found in Tulsa, Oklahoma was examined by so-called 'experts' on mass media platforms, who completely ignore the ubiquitous presence of the black titanium-oxide coatings and particles distributed throughout the artificial matrix. Elevated titanium content reveals the remains of ancient geopolymer temple constructions with subterranean networks hewn into the bedrock.

The hidden presence of another Atlantean pyramid complex has been revealed by several unusual events that have taken place in the Black Fork Mountains of western Arkansas. In 1997, a UFO encounter took place in the Black Fork Mountains at Queen Wilhelmina State Park. During an overnight road trip on Route 59 near Mena, Arkansas, two women encountered glowing triangular object above the treetops closing in.

The craft then moved above the trees by the side of the road, where the stunned witnesses were able to discern the bright blue/white glow was being emitted by a thin strip running along the bottom, outer edge of the triangular craft, which they estimated to be over 30' wide.

After several minutes passed staring up at the glowing craft in awestruck silence, the pair became highly agitated and the driver finally decided to take off down the road, leaving the hovering UFO behind them. The witnesses soon became aware of a strong odor reminiscent of rotten meat and sulfur filled the air around the car before continuing on further to stop at a gas station to use the restroom.

Before they were able to fully exit the vehicle, an old white pickup truck pulled up beside them in the gas station lot. The truck's driver was an older man who quickly exited his vehicle and approached the two women. He began asking them questions about what they saw, and something about the man unnerved the witnesses, as he obviously knew of their UFO encounter but his truck was never seen during the UFO event, and no headlights were ever seen behind them as they drove to the gas station.

He then spoke to someone on an old-style CB radio in his truck while one of the witnesses went into the gas station and the other remained outside with the stranger. After a few minutes the second witness also entered the store to separate herself from the unusual inquirer, who eventually got back into his truck and departed the station.

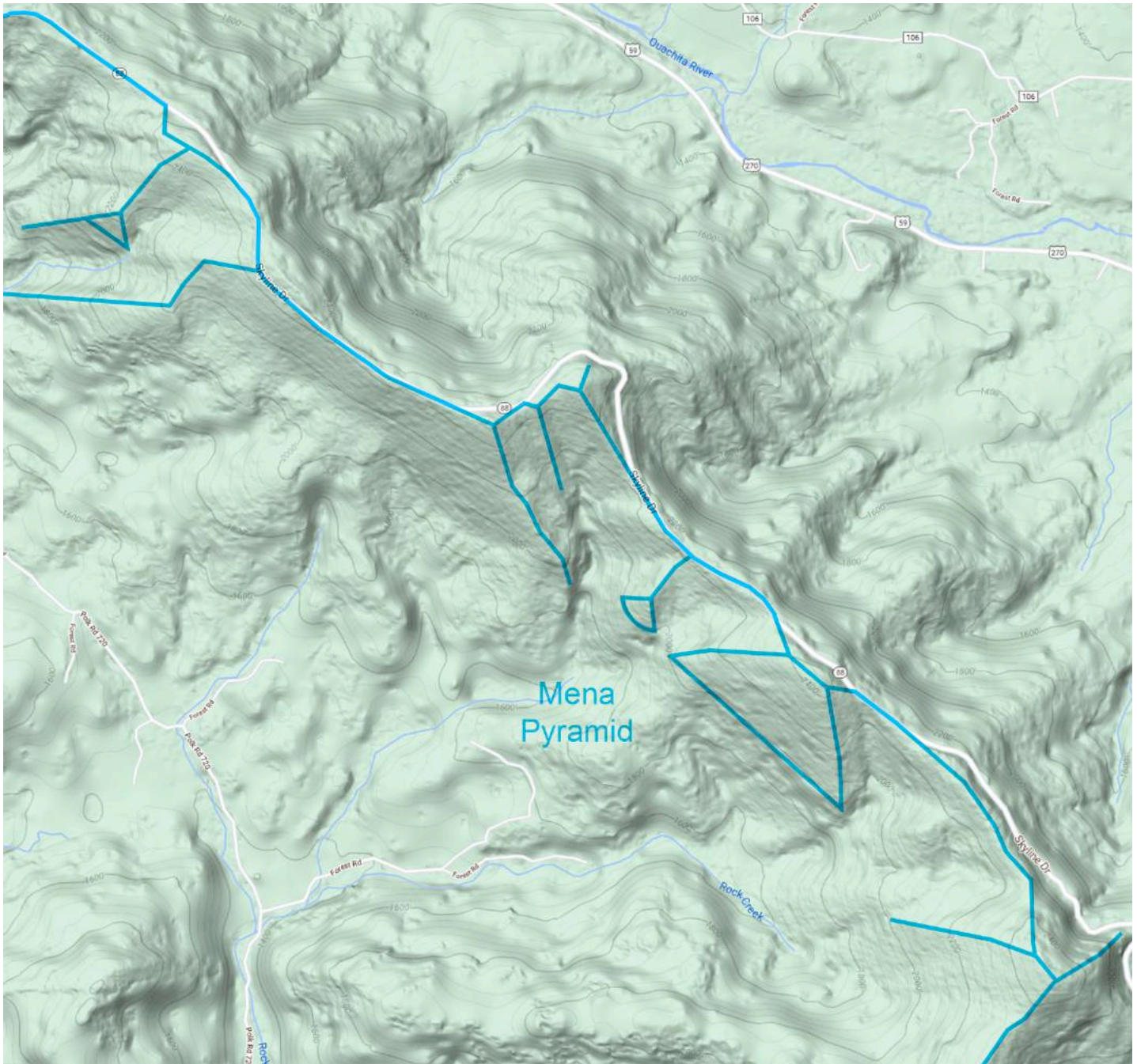
After waiting for some time, the two women returned to their vehicle and continued on their trip through the Black Fork Mountains and on to their final destination. No further discussion took place between the two witnesses on the way home or thereafter, leaving one of witnesses to guess that the other may have been warned by the stranger not to discuss the UFO encounter that had taken place that night.

The inquiries from the stranger, in addition to strong odors reported after the UFO encounter, suggest the two women were actually abducted from their vehicle and taken on board the triangular craft by HHO plasma beam levitation, and later returned to their vehicle under a state of amnesia. While the 1997 UFO encounter involved only a brief abduction of the two women, in stark contrast with another case that occurred a few years later in the same area.

The unexplained disappearance of Gloria McDonald from the Queen Wilhelmina State Park on January 26, 2001 presents the same set of unusual circumstances observed in so many other UFO abductions perpetrated by hybrids humanoid of the Baal ET consortium. Gloria was a local news reporter, who had gone hiking with a group of friends at the park after a storm had downed some trees across the trail.

Upon reaching the obstacle at 250 yards down the trail, Gloria declined to continue on with the others, and headed back to return to their vehicle parked at the trailhead. When the other hikers returned to the vehicle about an hour later, Gloria was nowhere to be found, and her purse was still where she had left it in the vehicle when they all departed on the hike.³³

Ground- and air-based search and rescue teams combed the entire area where Gloria had disappeared without finding a trace of the woman whatsoever. High levels of UFO activity over the Queen Wilhelmina State Park may explain an unusual closure of the park trails in July of 2010, but was announced as a precaution taken for 'increased bear activity' in the area. The presence of ripe berries in the park does not constitute reasonable grounds for the trail closures, *but intensifying predatory UFO activity certainly does.*



A careful review of topographic data for the region surrounding Mena, Arkansas reveals the presence of re-façaded pyramid structures embedded into the natural landforms of the long mountain range designated as the Queen Wilhelmina State Park. These sites, identified here for the first time, represent an Atlantean temple city complex including extensive underground chambers occupied by the predatory Baal syndicate.

Mena Pyramid Complex, Arkansas (34.6408755°N, 94.2611309°W, above) is located 6,743 miles from the Great Pyramid of present-day Giza, Egypt; comprising 27.09% of Earth's mean circumference ($^{27}/_{100}$). The 27% resonant distance interval is shared by the Chehalis, Asmyan, Rathdrum, Deva, Anzu and Butte temple complexes, facilitating efficient reception of planetary infrasound focused by the Orion Pyramids.

The high-precision nonlinear distribution pattern underlying the synchronous geositions of Atlantean temple city complexes was first defined as the quantum function $[z_{n+1} = z_n^2]$ by this author almost two decades ago, and continues to provide unparalleled insight into the Paleo-Sanskrit origin of the present-day UFO abduction phenomena and its relationship to Atlantean geopolymer temple city complexes worldwide.



One of the most astonishing ancient metal objects ever unearthed in North America has been entirely ignored by mainstream archeology, yet belongs to the same Paleo-Sanskrit tradition as the Hopi Complex in the Grand Canyon. *A brass bell with Sanskrit iconography was found in Buckhannon, West Virginia in 1944:*

This [fine brass] bell was found in 1944 by a ten-year-old boy named Newton Richard Anderson, who dropped a lump of coal and found it [firmly lodged] inside. Mr Anderson kept the bell until 2007 when passed it to Genesis Park. At this time he underwent polygraph tests to determine if he was telling the truth about the discovery of the bell and the result of this was that "no deception was detected".

The bell is made of brass (an alloy of copper and zinc) with traces of tin, arsenic, iodine and selenium. It is about 7 inches tall and is mounted with a crudely described figure appearing to have one visible leg, two arms and a head. This kneeling figure is of Garuda (the gigantic man-bird which carries Lord Vishnu), with its eagle wings spread and a sharp beak.

This bell was made from a method not used today. When an analysis was carried out it was discovered that the bell was made from an unusual mix of metals, different from any known modern alloy production (including copper, zinc, tin, arsenic, iodine, and selenium).

The seam from whence this lump of coal was mined [in Buckhannon, West Virginia] is estimated to be 300,000,000 years old! It is customary for Indians to use such bells with either Hanuman or Garuda idol with hands folded in the gesture of 'namaste' on top of them –in festivals, religious celebrations and marriages.

It is currently accepted by science and geology that coal is a by-product of decaying vegetation. The vegetation becomes buried over time and is covered with sediment. That sediment eventually fossilizes and becomes rock. This natural process of coal formation takes up to 400 million years to accomplish.

Anything that is found in lumps of coal or in coal seams during mining, had to have been placed or dropped into the vegetation before it was buried in sediment. Eventually the "bell found in coal" became somewhat famous, being featured in creationist and apologetics books.

An evangelistic tract was made that presented the bell as indisputable proof of the worldwide deluge. Ripley's "Believe It or Not" found out about the bell and sent a representative to investigate. Anderson was interviewed and the bell was prominently featured in the 1992 CBS docudrama called Ancient Secrets of the Bible.

Creationist books and articles continue to describe this mysterious bell, touting it as a genuine antediluvian artifact (see for example Morris, 2008). The bell was even displayed at the San Diego Museum of Natural History for a couple of years, and they made an offer to purchase it.

In the 1963-1964 timeframe, a man named Boris Bilas took the bell to the geology department at the University of Delaware at Wilmington, where it was studied and then returned. They confirmed that the bell was handmade. The clapper inside the bell is composed of iron and it still rings beautifully.³⁴

The ancient brass Garuda Bell found in Buckhannon, West Virginia remains among the most enigmatic metal objects ever found in the United States, and has yet to undergo any comprehensive analysis using the latest tools for providing an accurate date for its origin.

Any minute residue of carbon preserved on the well protected interior surfaces of the brass bell –no matter how small– will yield significant information that may include an exact date for the formation of the coal itself, offering insight into how the object became lodged in the matrix of black lignite material.

The Paleo-Sanskrit context of the find implicates an age of >13,000 years, with a maximum age of <30,000bp corresponding to the second phase of the high civilization of Atlantis; the global pyramid-building psychoacoustic society. During that long lost epoch, the lands known today as the continent of North America were then called 'Zu', a votive Paleo-Sanskrit hieroglyph meaning "The infinite".

Considering the highly advanced mental capabilities of ancient adepts practicing within underground chambers during the Atlantean Era, the most likely explanation for the unusual deposition of the Garuda bell in the coal seam may have resulted from *experimental teleportation of the object by focused intent*, or some other advanced practice of those ancient adepts that is not yet comprehensible to us at this time.

As revealed by the known spiritual iconography of the winged figure, the specialized combination of metals comprising the Buckhannon Garuda bell also reflects a Paleo-Sanskrit origin >13,000 years ago. The precise formulation of the brass alloy corresponds to long lost Atlantean production methods that align with ancient Biblical references concerning advanced antediluvian applications of iron and brass:

"And Zillah, she also bare Tubalcain,
an instructor of every artificer in brass and iron:
and the sister of Tubalcain was Naamah." (Genesis 4:22)

These simple, ancient statements given in the Bible closely describe the composition of metals used in the making of the Garuda bell found in Buckhannon, West Virginia in 1944, implicating the alloy formulation as a highly advanced resonant alloy of significant scientific value to modern metallurgists and quantum physicists. These findings suggest Atlantean brass containing tin, arsenic, iodine and selenium is a highly specialized formulation *exhibiting enhanced ionization properties due to the presence of iodine*.

Inclusion of trace quantities of selenium and iodine in the Backhannon Garuda bell alloy likely provide from enhanced properties of acoustic resonance and ionization of the air around the bell. These features would likewise enhance a multitude of bioelectrical effects experienced by use within resonant temple chambers. A chorus of bells of this type would have increased the efficacy of psychoacoustic and biophotonic effects, conferring resonant health benefits to all participants in the ceremonies.



Garuda kneels in prayer
Hindu bronzes, India



Garuda or Garutmanta, is the eagle-like divine bird used by Lord Vishnu as his vehicle (vahana)... According to the Puranas, Garuda was the son of sage Kashyapa and Vinata. According to the legends, Vinata has a sister named Kadru. She is the mother of snakes. Once, Kadru captured Vinata due to a personal rivalry and held her captive. She insisted that if Garuda brought her the ambrosia (amrit) from the heavens, she would free her.

To save his mother, Garuda went to heaven, killed two serpents who were guarding the pot of ambrosia and brought it to Kadru. His mother was released. However, Indra, the Lord of the heavens, was not pleased with these developments. He insisted on Garuda to bring the pot of ambrosia back to heaven and in return gave permission to Garuda to kill and eat the snakes. Since that day, Garuda has begun feeding upon snakes.

In the iconography Garuda is depicted with a strong human body and an eagle like face. He holds two snakes in his two hands, wears several snakes as ornaments on his body, as belt around girdle, sacred thread, necklace and rings. He is also depicted in many images either with folded hands or carrying a pot of ambrosia either with one or two of his hands. Sometimes he is shown as devouring serpents. In some images, he is flanked on both sides by his two consorts, Rudra and Sukriti. Symbolically, Garuda represents the moving aspect of creation, namely breath in the microcosm and wind in the macrocosm.³⁵

Garuda is often referred to as Nagantaka; 'the devourer'. This Sanskrit name is given in reference to his dual role as the enemy of all snakes which are symbolic of death and the underworld, simultaneously representing birth and heaven in association with the sun and fire. The duality of the winged Garuda draws a close association with aerial predators of the Baal ET consortium among Tantric Buddhist traditions.



In Tibet, giant skulls of Baal were carved into Tantric necromancy masks, with panels showing the winged Garuda clashing the DNA serpent in his beak; *representing genetic manipulation of humanity by the Baal.*

Garudavan Pyramid Complex near Buckhannon, West Virginia (39.0180467°N, 80.2840026°W, opposite) is situated 5,958 miles from the Great Pyramid of present-day Giza, Egypt, corresponding to 23.94% of Earth's mean circumference ($6/25$). In addition this resonant distance alignment, the Garudavan Complex sits at the 39° North latitude at a nodal point in the global nonlinear field of infrasound standing wave resonance.



Garudavan Pyramid Complex
Buckhannon, West Virginia





References

- ¹ Schildmann K (1999) *'Als Das Raumschiff 'Athena' Die Erde Kippte -Indus-, -Burrow's-Cave-...'* CTT-Verlag
- ² -- (2012) 'New Hance-Grandview – Grand Canyon, April 2011' *Wordpress*, online
· <https://mikeshikes.wordpress.com/2011/04/18/new-hance-grandview-grand-canyon-april-2011/>
- ³ -- (2020) 'Bighorn Fire in Pima County Fully Contained; Burned Nearly 120,000 Acres' *Fox10 Phoenix*, online
· <https://www.fox10phoenix.com/news/bighorn-fire-in-pima-county-fully-contained-burned-nearly-120000-acres>
- ⁴ Paulides D (2011) *'Missing 411 - Western United States & Canada'* CreateSpace, South Carolina, p. 187
- ⁵ *Ibid*, pp. 187-188
- ⁶ *Ibid*, p. 188
- ⁷ Sanger T (2018) 'UFO Sept 28 2018 Tucson...' *Youtube*, video online · <https://youtu.be/lcJQuXAkUmk>
- ⁸ -- (2019) 'Flying Platforms and Rocketmen' *UFO Digest*, online
· <https://www.ufodigest.com/article/flying-platforms-and-rocketmen/>
- ⁹ Friedman ST, Berliner D (1992) *'Crash at Corona: US Military Retrieval and Cover-Up of a UFO'* Paragon House
- ¹⁰ -- (2019) 'Socorro Landing: A UFO Story' SocorroNM, online
· <https://www.socorronm.org/attractions/socorro-landing-a-ufo-story/>
- ¹¹ Putney A (2015) 'Human Resonance: Roswell Crash Debris Text and Autopsy' (@2:01) *Youtube*, video online
· <https://youtu.be/ryud39VE-H4>
- ¹² -- (1941) 'Brother Still Searches for Los Duranes Woman Lost in Manzanos Year Ago' *Newspapers*, online
· <https://www.newspapers.com/clip/14774618/albuquerque-journal/>
- ¹³ *Op cit*, Paulides, p. 193
- ¹⁴ Pacheco A (2018) 'The Pecos Triangle = Info on Another Vanishing...' *Santa Fe Ghost and History Tours*, online
· <http://www.santafeghostandhistorytours.com/PECOS-NEW-MEXICO-MYSTERY.html>
- ¹⁵ Pacheco A (2018) 'Devil's Road' *Santa Fe Ghost and History Tours*, online
· <http://www.santafeghostandhistorytours.com/DEVILS-ROAD.html>
- ¹⁶ Pacheco A (2018) 'The Pecos, New Mexico Mystery' *Santa Fe Ghost and History Tours*, online
· <http://www.santafeghostandhistorytours.com/PECOS-NEW-MEXICO-MYSTERY.html>
- ¹⁷ -- (2019) 'Melvin Isadore Nadel' *NC Missing Persons*, online · <https://ncmissingpersons.org/melvin-isadore-nadel/>
- ¹⁸ -- (2021) 'Melvin "Mel" Nadel' *Southeastern Outdoors*, online
· <http://www.southeasternoutdoors.com/outdoors/hunting/missing/melvin-nadel.html>
- ¹⁹ *Op cit*, Paulides, p. 195
- ²⁰ Pacheco A (2018) 'An Unexplained Disappearance' *Santa Fe Ghost and History Tours*, online
· <http://www.santafeghostandhistorytours.com/UNEXPLAINED-DISAPPEARANCE.html>
- ²¹ -- (2018) 'Missing Hunter's Body Is Found in Pecos River' *Santa Fe New Mexican*, online
· https://www.santafenewmexican.com/news/local_news/missing-hunter-s-body-is-found-in-pecos-river/article_3e1368c6-e006-536d-829a-0f9805617824.html
- ²² Strickler L (2015) 'Possible Bigfoot 'Kill Dump' Discovered' *Phantom's & Monsters*, online
· <https://www.phantomsandmonsters.com/2015/06/possible-bigfoot-kill-dump-discovered.html>
- ²³ -- (2021) 'UFO Hunters: Mysterious Aliens Linked to Missing Cows (S3, E6) Full Episode - History' *Youtube*, video online · <https://youtu.be/qcdSLbhHwag>

-
- ²⁴ -- (2010) 'UFO Over Salida' *SalidaArchive*, online · <https://salidaarchive.info/ufo-over-salida/>
- ²⁵ -- (2016) 'Tim Edwards 1995 UFO' *Youtube*, video online · <https://youtu.be/toIKIFSQapg>
- ²⁶ -- (2013) 'Rancher's Colorado Farm the Site of Dozens of Cattle Mutilations - Says Carcasses Dropped from Above' *WeekInWeird*, online · <http://weekinweird.com/2013/07/25/ranchers-colorado-farm-the-site-of-dozens-of-cattle-mutilations-says-carcasses-dropped-from-above/>
- ²⁷ Correll D (2009) 'Cattle Mutilations Baffle Colorado Ranchers' *LA Times*, online · <https://www.latimes.com/archives/la-xpm-2009-dec-14-la-na-dead-calves14-2009dec14-story.html>
- ²⁸ Op cit, Paulides, pp. 234-235
- ²⁹ Paulides D (2012) '*Missing 411 - North America & Beyond*' CreateSpace, South Carolina, pp. 151-153
- ³⁰ Cayce E, Cayce G (2006) '*The Complete Edgar Cayce Readings, CD-ROM Version 2.0*' ARE Press, Reading 364-4
- ³¹ -- (2016) 'The Ancient Megaliths of Siberia, Altai - Videography' *Youtube*, video online · <https://youtu.be/66NNTfql-vs>
- ³² -- (2020) 'The Susquehanna Mystery... at Conewago Falls' *Youtube*, video online · <https://youtu.be/OteyRneehQ4>
- ³³ Paulides D (2011) '*Missing 411 - Eastern United States & Canada*' CreateSpace, South Carolina, pp. 88-90
- ³⁴ -- (2015) '300 Million Years old Bell with Garuda found in Buckhannon, West Virginia' *BooksFact*, online · <https://www.booksfact.com/archeology/300-million-years-old-bell-garuda-buckhannon-west-virginia.html>
- ³⁵ -- (2020) 'Garuda' *HinduWebsite*, online <https://www.hinduwebsite.com/hinduism/concepts/garuda.asp>