



Bloodlines of Zu

The present discovery of the Atlantean Pyramids of Zu in the high elevations of Alta, Montana represents *the most significant discovery in the entire history of modern archeological investigation of North America*, definitively refuting the false mainstream assertion heard so many times that “there are no pyramids in North America”. Of course, earthen pyramids and mounds are found in all regions of the US, but *several of the largest stone pyramids in the world are actually immense, re-façaded mountainsides located in Montana.*

Abundant skeletal remains of giants and giant/human hybrids of various types among the descendants of Mu, referred to as the ‘Baal’ in the Bible, were excavated from earthen mounds throughout the 19<sup>th</sup> century in the Central US and whisked away by the Smithsonian Institute to be quietly archived in basement vaults.

Many finely carved catlinite smoking pipes of standard human size, as well as larger pipes made and used by giants, were among the diverse sets of artifacts recovered from hundreds of sites left by the mound-building cultures across ancient North America.<sup>17</sup> Catlinite is commonly called ‘red pipestone’ for this primary usage, yet the most impressive artifact yet recovered from the descendants of Zu is a *catlinite skull that displays distinctive features of a female reptilian ET/human hybrid of mtDNA haplogroup X2a* (above).

The ancient funerary practice of painting red ochre on the interred bodies and burial objects presents an obvious vital association with blood sacrifice, as well as spiritual associations and ritual contexts for which catlinite’s vivid red coloration was especially chosen. Ancient Native American pipestone quarries are found in few places in the US, mainly from deposits in Pipestone, Minnesota and areas of Montana and Missouri.<sup>18</sup>

Late Paleolithic human remains associated with the Pyramids of Zu were uncovered 170 miles due east, in a collapsed rock shelter in southern Montana in 1968. The fragmented bones of a young boy painted in red ochre were later identified and RC<sup>14</sup> dated to ~12,600bp. Known as the Anzick burial site, it included a cache of >115 chert, quartzite, quartz and obsidian flaked tools deposited with several small bone implements.

Chert, quartzite & quartz spearpoints  
Anzick site, Montana ~12,600bp



The large cache of beautifully knapped bifacial blades were also painted in red ochre, and included dozens of large spearpoints –*showing distinctive knapping characteristics matching the ancient Jomon people of Japan* (above). Subsequent genetic analyses conducted on bone samples from the Anzick skeleton showed a maternal lineage belonging to mtDna haplogroup D4h3a, and nuDNA haplogroup Q-L54 paternal lineage.

A table summarizing finds of human remains of the founding mtDNA haplogroups of the Americas from the Late Paleolithic and Holocene Periods indicates all relevant sites, *including those not reported in scientific journals*, as well as living descendant populations representing surviving bloodlines from Mu (opposite).



## Ancient mtDNA of the Americas

- A. On Your Knees Cave - **D4h3a**  
Alaska, US ~10,300 bp
- B. Kennewick Man - **X2a**  
Washington, US ~9,500 bp
- C. Anzick Boy - **D4h3a**  
Montana, US ~12,600 bp
- D. *Homo draconis* (giant female, male)  
Johnson Cave, Utah, US ~14,000 bp
- E. Peñon Hill Woman III - **X2a**  
Lake Texcoco, Mexico ~10,750 bp
- F. Naia, Hoyo Negro - **D1**  
Tulum, Mexico ~12,500 bp
- G. *Homo draconis* (giant male)  
Pedra Furada, Brazil ~12,000 bp
- H. Luzia, Lapa do Santo - **D1, D4h3a, X2a**  
Lagoa Santa, Brazil ~11,500 bp

- I. Chumash, California - **D1** (7%), **D4h3a** (16%)
- J. Karankawa, Texas - **D1** (20%), **D4h3a** (50%)
- K. Pericú, Baja Mexico - **D1** (20%), **D4h3a** (50%)
- L. Cayapa, Ecuador - **D1** (4%), **D4h3a** (22%)
- M. Chinchorro, Chile - **D1** (25%), **D4h3a** (25%)
- N. Mapuche, Chile - **D1** (3%), **D4h3a** (2%)
- O. Chono, Chile - **D1** (4%), **D4h3a** (2%)
- P. Kawésqar, Chile - **D1** (8%), **D4h3a** (50%)
- Q. Yámana, Chile - **D1** (9%), **D4h3a** (9%)
- R. Aónikenk, Argentina - **D1** (28%), **D4h3a** (26%)

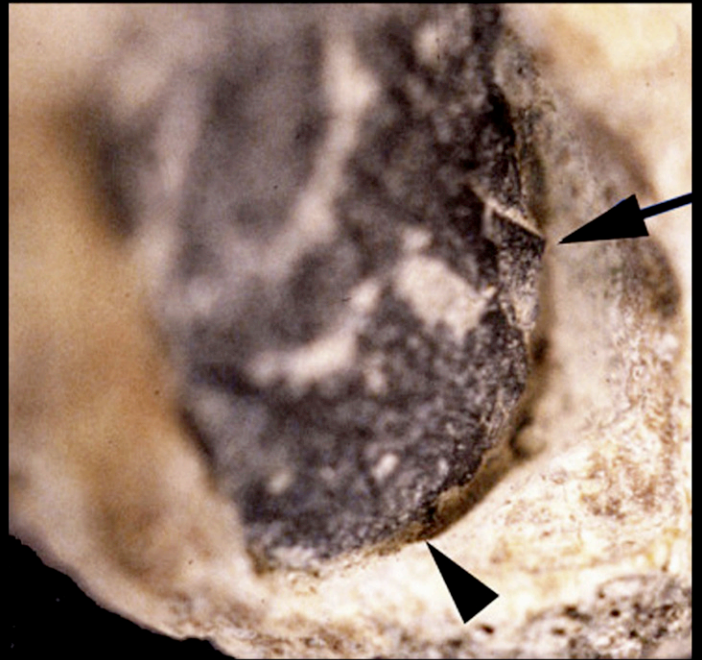




Kennewick Man - cranial restoration  
Reptilian hybrid mtDNA haplogroup X2a  
Columbia River, Washington ~9,500bp



Kennewick Man skeleton ~9,500bp  
Basalt spearpoint 3D reproduction











Kennewick Man - fragmented right ilium  
Embedded magnetic basalt spearpoint  
Columbia River, Washington ~9,500bp

The ~9,500-year-old cranium recovered along the Colombia River near Kennewick, Washington in 1996 displays an acutely dolichocephalic form. The Kennewick skull bears a strong resemblance to several ancient American groups, including the Karankawa people of the Texas Gulf Coast; the Pericú and Guaycura of Mexico's Baja Peninsula;<sup>19</sup> the ancient Chinchorro of Peru and Chile;<sup>20</sup> as well as the extant Mapuche, Chono, Kawésqar, Yámana and Aónikenk groups of southern Chile and Argentina.<sup>21</sup>

Petrographic analyses of the spearpoint lodged in Kennewick Man's hipbone have not been published, as *legally mandated by an official testing ban issued by the US government*. This is certainly a bizarre and extreme action to take over a spearpoint, and I am the only investigator who will explain why: *it is composed of magnetic 'firestone' geopolymer basalt*. I've collected ample geopolymer samples from the Colombia Plateau region likewise loaded with fine particulate metals including iron, nickel, titanium, gold and silver.



Kennewick Man male reptilian hybrid skull compared with an elongated female skull from the Paracas necropolis at Ica, Peru with features of mtDNA haplogroup X2a



Distinctive cranio-facial characteristics of reptilian hybrid genetics are plainly evident in the oval shape of the very large eye orbits that are nearly identical on these skulls, which accommodated large eyes that angled upward toward the outer corners (above). Striking similarities and dolichocephalic form shared by the skulls suggests the elongated specimen of the Paracas people also belongs to mtDNA haplogroup X2a.

Whenever ancient remains are found in the Americas >6,000 years in age, news media reports always hail them as the oldest human remains ever found in the Americas. Actually, this overused cover-up line is easily disproven here, in every case. *The giant skeletons of Johnson Canyon, Utah are a prime example, dating to ~14,000bp, possessing a pair of complete extraterrestrial giant reptilian humanoid genomes.*

Literally thousands of ancient skeletons have been found in the Americas that are older than those few discoveries that make it into contrived news media reports, all of which have been systematically filtered out by the Smithsonian Institute and various covert government agencies working in close coordination.

The covert aim is to control public awareness of extraterrestrial hybridization dynamics among the ancient pyramid-building cultures of the Americas, as especially seen at the Pyramids of Zu in western Montana, where mounting evidence points directly to the greatest archeological revelation in the Americas to date.



After several years of silly claims and media mudslinging over the Kennewick Man skeleton, it was finally allowed to be DNA tested, and it yielded surprising results that were characterized as 'Native American' when they actually confirm that the descendants of the mtDNA haplogroup X2a to which Kennewick Man belonged show <2% representation among known indigenous North American groups.

Instead, the genetic lineage of Kennewick Man shows close homology with the ancient peoples of Central and South America prior to ~7,000bp, which later became displaced by successive waves of Siberian and other East Asian migrant groups after that time. As expected in such a scenario, isolated populations belonging to X2a, D1 and D4h3a haplogroups are still seen in isolated regions and on islands.



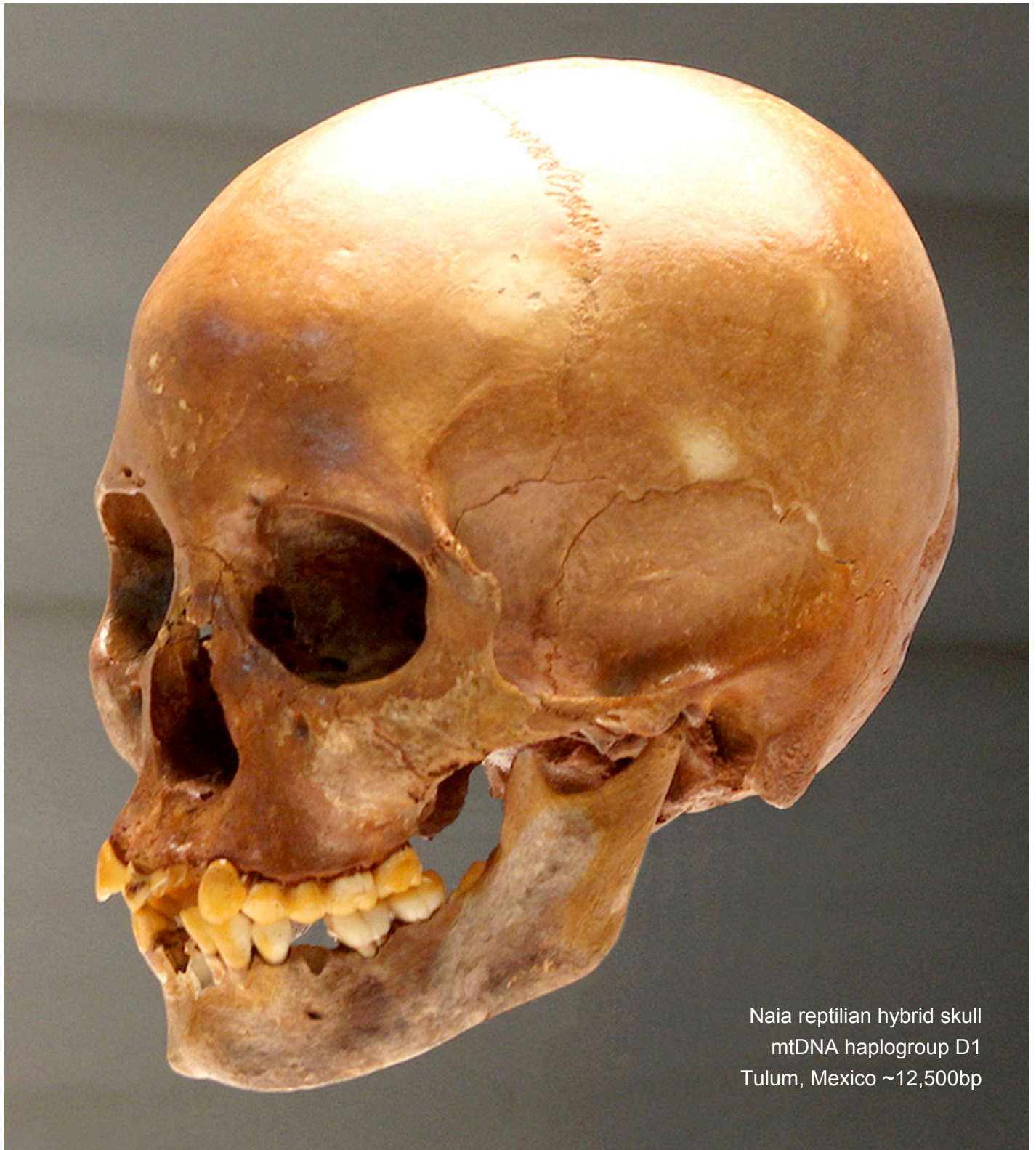
A side-by-side comparison of Washington State's Kennewick Man and the more ancient Peñon Hill Woman III, from Lake Texcoco, Mexico, shows quite a strong resemblance between the two skulls in virtually every respective cranio-facial feature. This strong likeness clearly indicates that Peñon Woman III, and very similar skull fragments of two other individuals from the same site, also belong to mtDNA haplogroup X2a.

Not surprisingly, it is alleged that DNA analyses have not been conducted on the Peñon Hill remains, and unlike those of Kennewick Man, little public interest or debate has arisen over the genetic identity of Peñon Woman. The standard practice of withholding and suppressing genetic data concerning ET hybridization dynamics of the Atlantean Era (from ~74,000-13,000 years ago) has effectively maintained mass ignorance.

*Morphological characteristics clearly link the two lineages, and both were excavated in the vicinity of pyramids; Kennewick Man near the immense Atlantean pyramid complex of Zu, and Peñon Woman near the Teotihuacan pyramid complex, identified by Aztec sources as the massive reconstruction work of giants, on top of another, much older pyramid. These giants hunted the Aztecs, and preferred raw human flesh.*

These same disturbing predatory dynamics involving various extraterrestrial giant humanoids, including reptilian, sasquatch and nephilim species have been previously identified among diverse cultures of Africa, Europe, Central and Southeast Asia, Central and South America,<sup>22</sup> as now shown in the Pacific Rim region.





Naia reptilian hybrid skull  
mtDNA haplogroup D1  
Tulum, Mexico ~12,500bp

In 2007, nearly complete skeletons of a mastodon and a human female were recovered by an archeological dive team at Hoyo Negro, part of the Sac Actun cenote system in Tulum, Mexico (above, opposite).

Nicknamed Naia, these spectacularly preserved human remains were later radiocarbon dated to the Late Paleolithic Period at ~12,500bp, offering further insight into patterns of human occupation in the Americas that have thus far evaded scientific explanation. Several unusual features including the dolichocephalic form of the Hoyo Negro skull confirm its great significance from an anthropological perspective.



Well established dating of the flooding of the Sac Actun cave system reveals both the mastodon and the woman most likely fell into the natural pit trap and could not escape due to injury, rapidly succumbing to starvation. Anthropologists determined Naia was a teenage female who suffered from poor nutrition due to over-consumption of red meat with little dietary diversity, indicative of a big game hunting lifestyle.

When the Naia skull is seen in profile view, protuberances of the zygomatic bone at the temples stand out. These raised surfaces represent large muscle attachment sites that connected to corresponding raised points on rear corners of the lower jaw. Naia's mandibles are extremely robust, and matched by cranial plates that are significantly thicker than in a normal human skull, *implicating interspecies hybridization*.



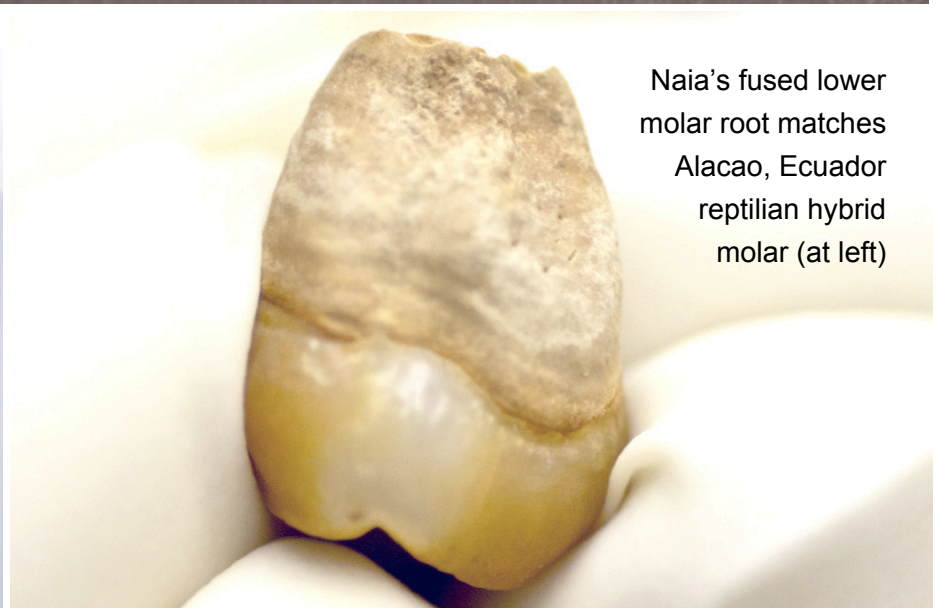
The narrow frontal bone and quite expanded parietal and occipital bones of the Naia skull betrays hybrid features inherited from the giant ET reptilian humanoid species. Another feature seen on Naia, Kennewick Man, Peñon Woman III and the Paracas elongated skull is a reduced temporal bone, and the appearance of unusual sutural bones already identified in South American, Asian and West African populations,<sup>23,24</sup> that represent non-human cranial features of reptilian/human hybrid lines inherited from a giant ET species.

Genetic analyses showed Naia belongs to mtDNA haplogroup D1, seen today at 29% prevalence among indigenous peoples of southern Chile and Argentina. In addition, osteological examinations revealed excessive bone porosity in the skull of Naia that represents evidence of a failing ET hybridization project that lasted hundreds of years. The same pathology is evident in a great number of skulls already described.<sup>25</sup>





Naia reptilian hybrid skull, mtDNA D1  
Hoyo Negro, Mexico ~12,500bp



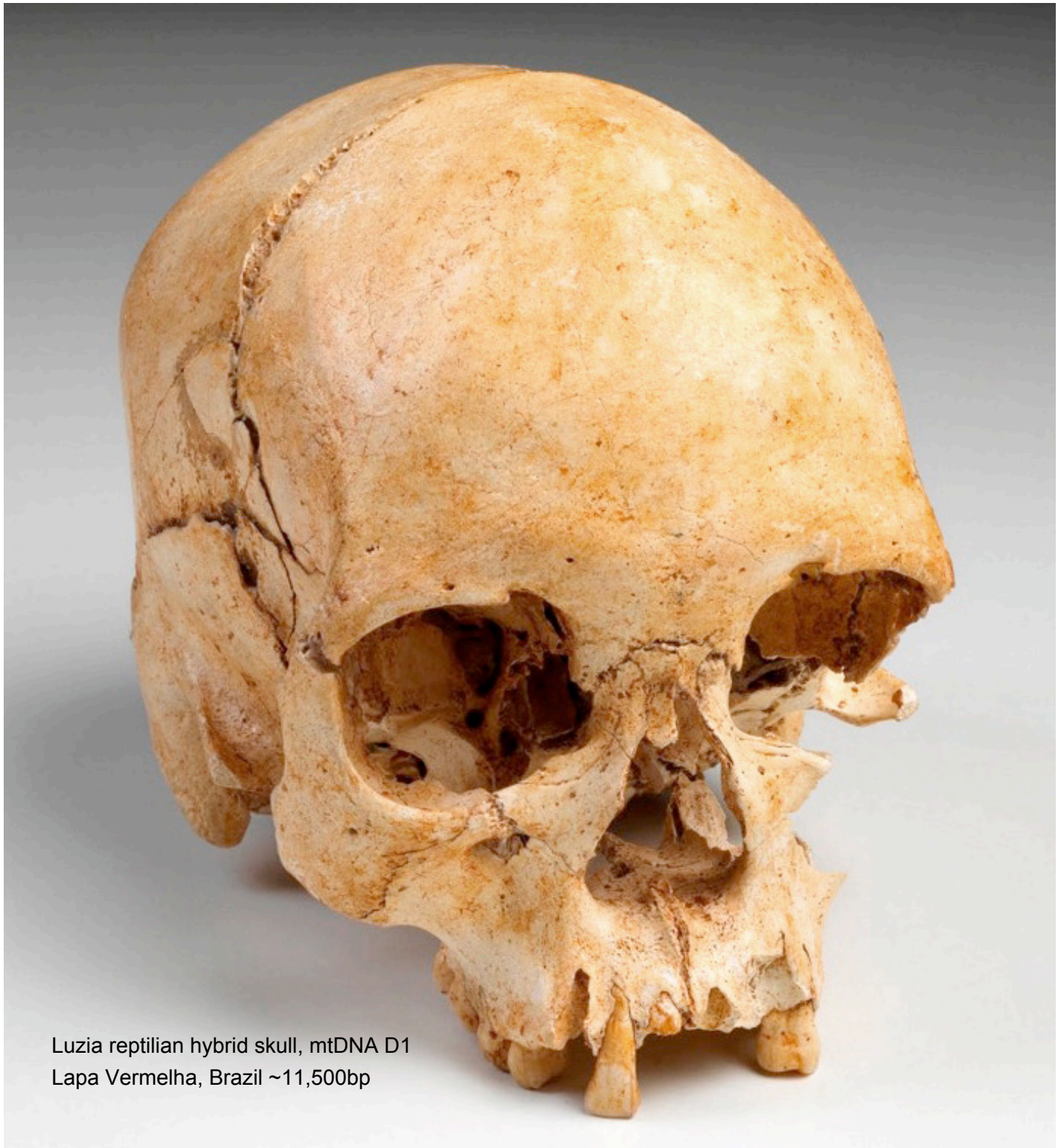
Naia's fused lower  
molar root matches  
Alacá, Ecuador  
reptilian hybrid  
molar (at left)





Naia reptilian hybrid skull, mtDNA D1  
Hoyo Negro, Mexico ~12,500bp





Luzia reptilian hybrid skull, mtDNA D1  
Lapa Vermelha, Brazil ~11,500bp

A Late Paleolithic skull of a female individual nicknamed Luzia was excavated at Lapa Vermelha, Brazil in 1974, which displays the same distinctive set of reptilian/human hybrid features present among all other human remains from the Americas of that era (above). *Once again, DNA testing has not been conducted.*

The Luzia skull was RC<sup>14</sup> dated to ~11,500bp, being approximately 500 years younger in age than the mutilated giant reptilian ET humanoid skeleton excavated in northern Brazil at Pedra Furada.<sup>26</sup> The notably non-human cranio-facial characteristics of the Pedro Furada giant are clearly seen in those of Luzia, although in lesser form resulting from artificial hybridization of her lineage by the giant reptilian humanoids.



Seen in profile view, the Luzia specimen displays quite similar features as seen in the Naia skull from Mexico, presenting an immense occipital lobe, reduced temporal bone and extra sutural bones typical of reptilian/human hybrids (below). The skulls also show robust mandibles with large teeth presenting fused lower molar roots closely resembling those of a reptilian/human hybrid skull from Alacao, Ecuador (overleaf).<sup>27</sup>

In various regions of the world, these same cranio-facial characteristics appear among ancient populations associated with pyramid-building societies who descended from Paleo-Sanskrit Atlantean groups.



Luzia reptilian hybrid skull  
Lapa Vermelha, Brazil ~11,500bp

Skeletal remains of over 250 individuals were also found in the same immediate area at Lagoa Santa, showing the same traits as the more ancient Luzia skull, yet dating to ~8,000bp. These numerous remains hold crucial genetic information regarding ancient giant reptilian ET/human hybridization, which explains exactly why the finds have been largely suppressed and ignored by most archeologists outside Brazil.

Dental anomalies seen in the upper and lower mandibles of skulls from Lagoa Santa match those observed in so many other reptilian hybrid individuals from ancient contexts throughout the Americas (opposite).

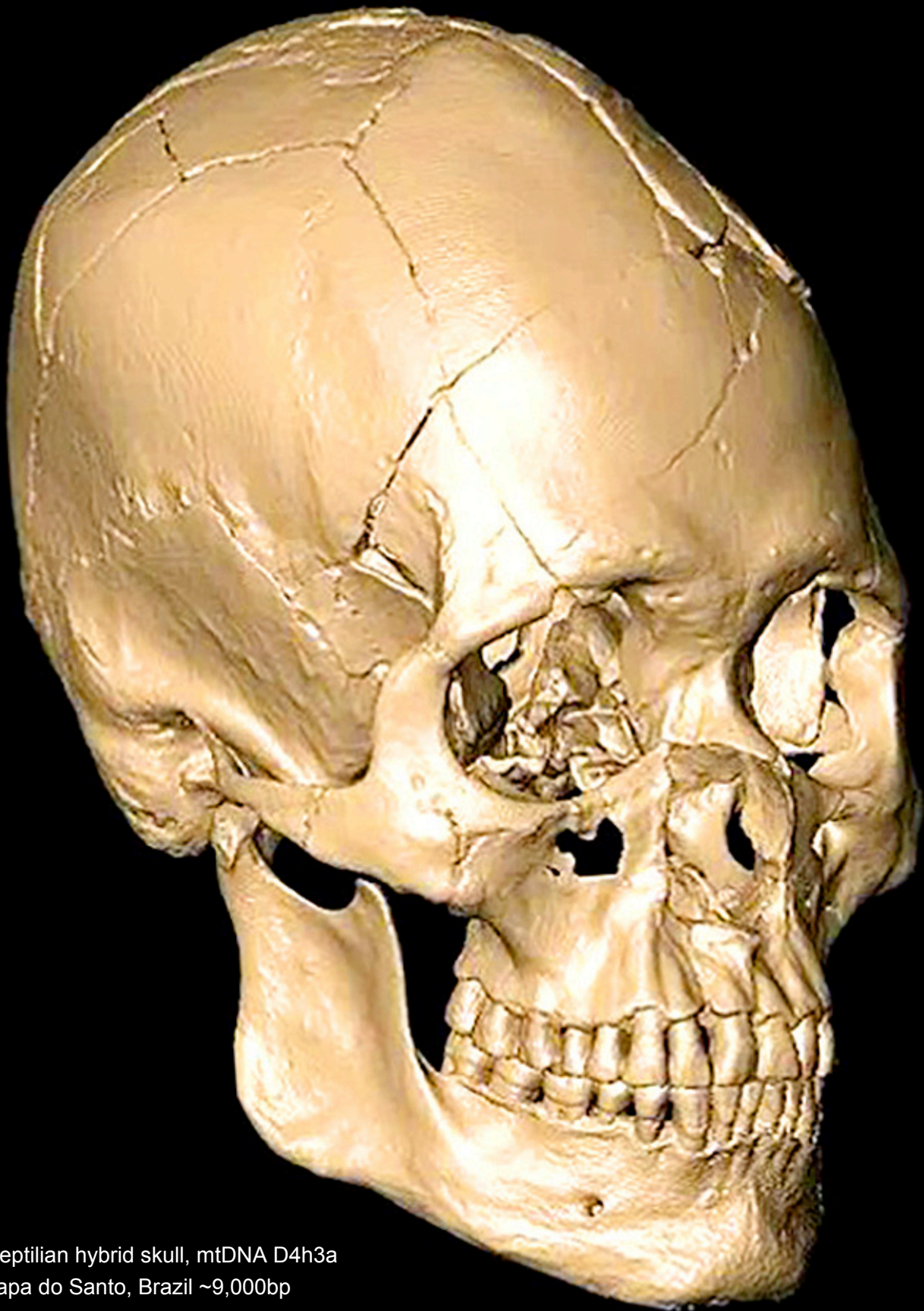
Another nearby series of disturbing archeological finds dated at ~9,000bp were unearthed at Lapa do Santo, where severely disrespectful funerary practices involved mutilation of reptilian hybrid corpses.<sup>28</sup> This violent practice was presumably executed by competing human groups *in rejection of domination through ritual human sacrifice and cannibalism by the Baal hybrid ruling class*. This same dynamic may explain facial mutilation of a male giant reptilian humanoid skeleton excavated at Pedra Furada, Brazil.





Anomalous molar root structures  
Reptilian hybrid skull, mandibles  
Lagoa Santa, Brazil ~8,000bp





Reptilian hybrid skull, mtDNA D4h3a  
Lapa do Santo, Brazil ~9,000bp



Mutilated reptilian hybrid skeleton  
Lapa do Santo, Brazil ~9,000bp







Johnson's Arch - red sandstone  
Johnson Canyon, Utah

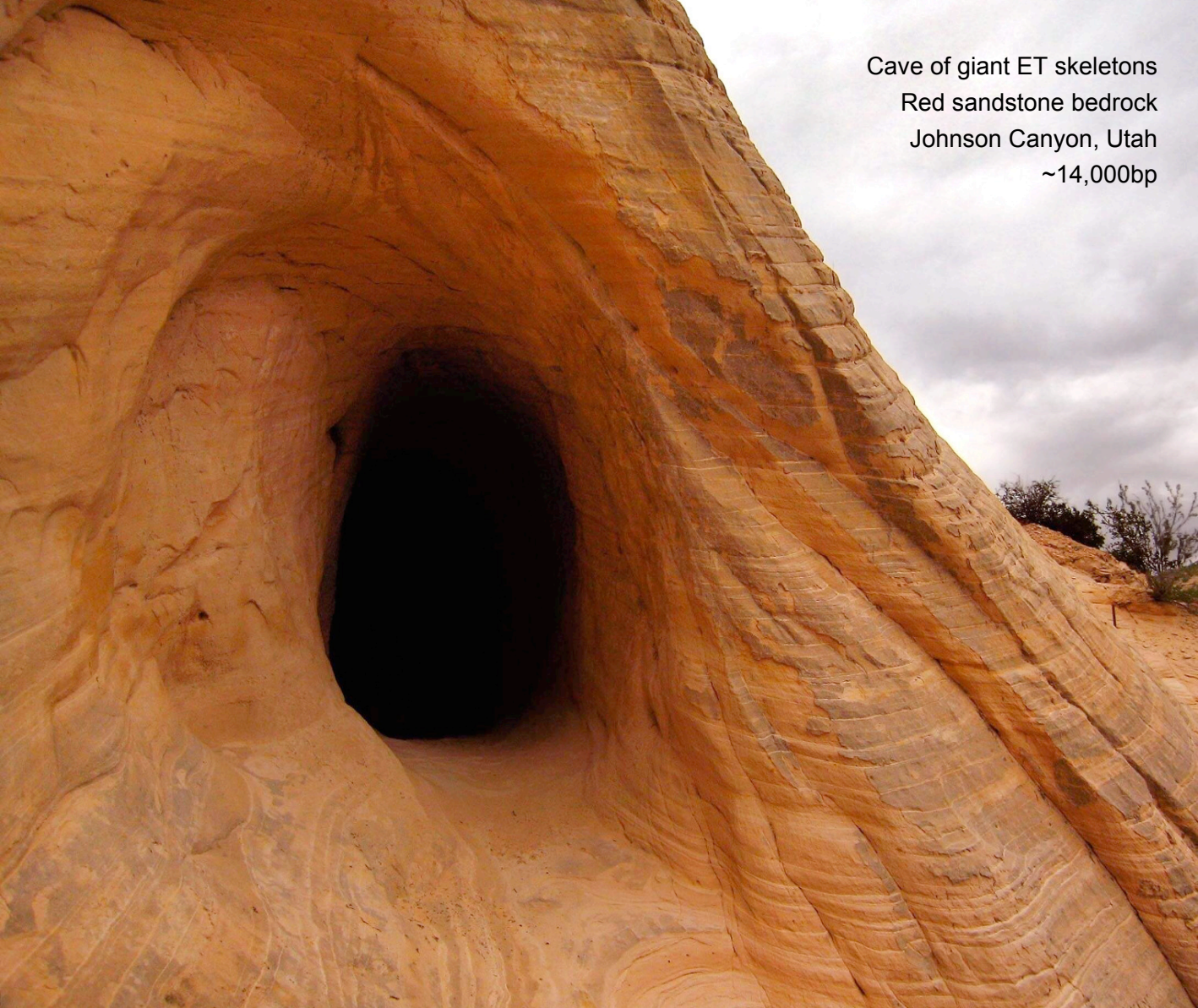
Most prominent geneticists entirely dismiss standard traditional classification methods based on precise measurement and comparison of cranial and skeletal proportions, generally disregarding morphological phenotypes as an inadequate tool for classifying ancient human remains. Certainly, this popular view reflects *a governmental preference to rely exclusively on rigged electronic results for all verification*, which is absurd.

Of course, every scientific specialty is presently full of arrogant, myopic researchers who operate under the broad misconception that nothing can be reliably known without validation from their own instruments. As especially valid in the cryozoological field of human/ET hybridization research, morphological comparison *–the primary basis for phenotype classification–* remains the most important analytical tool available to us.

Phenotypic and genetic analyses must obviously be applied together to determine which genetic markers become expressed in specific physiological features. The many peculiar cranio-facial characteristics of Atlantean populations from Mu that once occupied the Pacific Northwest US prior to ~7,000bp represent the most significant evidence for engineering of human/ET hybrid lineages of Paleo-Sanskrit pyramid-builders.

Widely disseminated lies delivered by well-paid geneticists who distort scientific processes to facilitate government information control are completely exposed as a cheap scam when presented with genuine evidence of giant reptilian ET humanoids in the archeological record measuring ~9' in height. Johnson's Arch spans the entrance to Johnson Canyon, Utah (above), where the giants were interred in deep oval tombs.





Cave of giant ET skeletons  
Red sandstone bedrock  
Johnson Canyon, Utah  
~14,000bp

The entrance to a large cavern with burials of giant extraterrestrial humanoid skeletons was hewn in red sandstone bedrock (above). *Large wall panels with Paleo-Sanskrit engravings indicate an age >14,000bp.*

Giant humanoid skeletons were interred in oval burial pits within the sunlit chambers of an extensive tunnel system located in Johnson Canyon, Utah (37.13°N 112.38°W) that can be accessed from multiple entrances on privately owned land situated just east of the dusty town of Kanap.<sup>29</sup>

Genetic analyses of the giant skeletons conducted by university labs were suppressed due to decisively non-human test results. This work offers concise morphological descriptions of their distinctly non-human skeletal characteristics, definitively establishing the identity of this extant crypto-species by the scientific name: **Homo draconis**. Thus, giant reptilian/human hybrids are referred to as **Homo sapiens draconis**.

Precise measurement of the giant male humanoid skeleton revealed a full height of 8'9" (267cm). Even more astounding was the measured height of 9'2" (279cm) for the giant female humanoid skeleton (opposite). This size difference between the sexes is consistent with *reptile* species, wherein females typically outgrow males, contrary to male size-dominance observed in humans and other mammals.

These giant reptilian humanoid skeletons display long torsos with thin ribcages and very narrow hips –*even the female specimen posed in fetal position*– whose curved pelvic bones cannot be overlooked.



Comparison of the relative proportions of the giant, bulbous skull with the extremely narrow pelvis reveals the extent of the figure's non-human physiology: the front-to-back-length of the skull appears to exceed the width of the pelvis. What's more, the very angularly formed iliac crests of the pelvic bones terminate in sharp protrusions that represent another skeletal feature that is not characteristic of human anatomy.



The extreme elongation and slenderness of the entire skeletal frame is greatly contrasted by the robust features of the skull, face and mandibles that appear to be entirely out of proportion if human norms are considered. Measurements of the cranial dimensions and bone thickness, as well as DNA sampling for genomic analysis, were conducted by two major universities in the region. *The results were suppressed.*

The full documentation and initial anatomical descriptions of multiple giant extraterrestrial skeletons offered here represent the first accurate scientific identification of the giant reptilian humanoid species in an archeological context, providing a comprehensive set of anatomical references that characterize the novel phenotype. *While DNA analyses of the Johnson Canyon cave giants have been covertly controlled by government agencies, nuDNA sequence from the Alacao reptilian hybrid also defines the species.*



Close inspection reveals an unusual configuration of cranial plates, showing the complete absence of a suture separating the parietal bones, being entirely fused as one. Both of the giant skulls also possess an extremely large cranial capacity that has yet to be quantified, with the female specimen presenting a notable augmentation of the occipital region corresponding to enhanced infrasound reception.

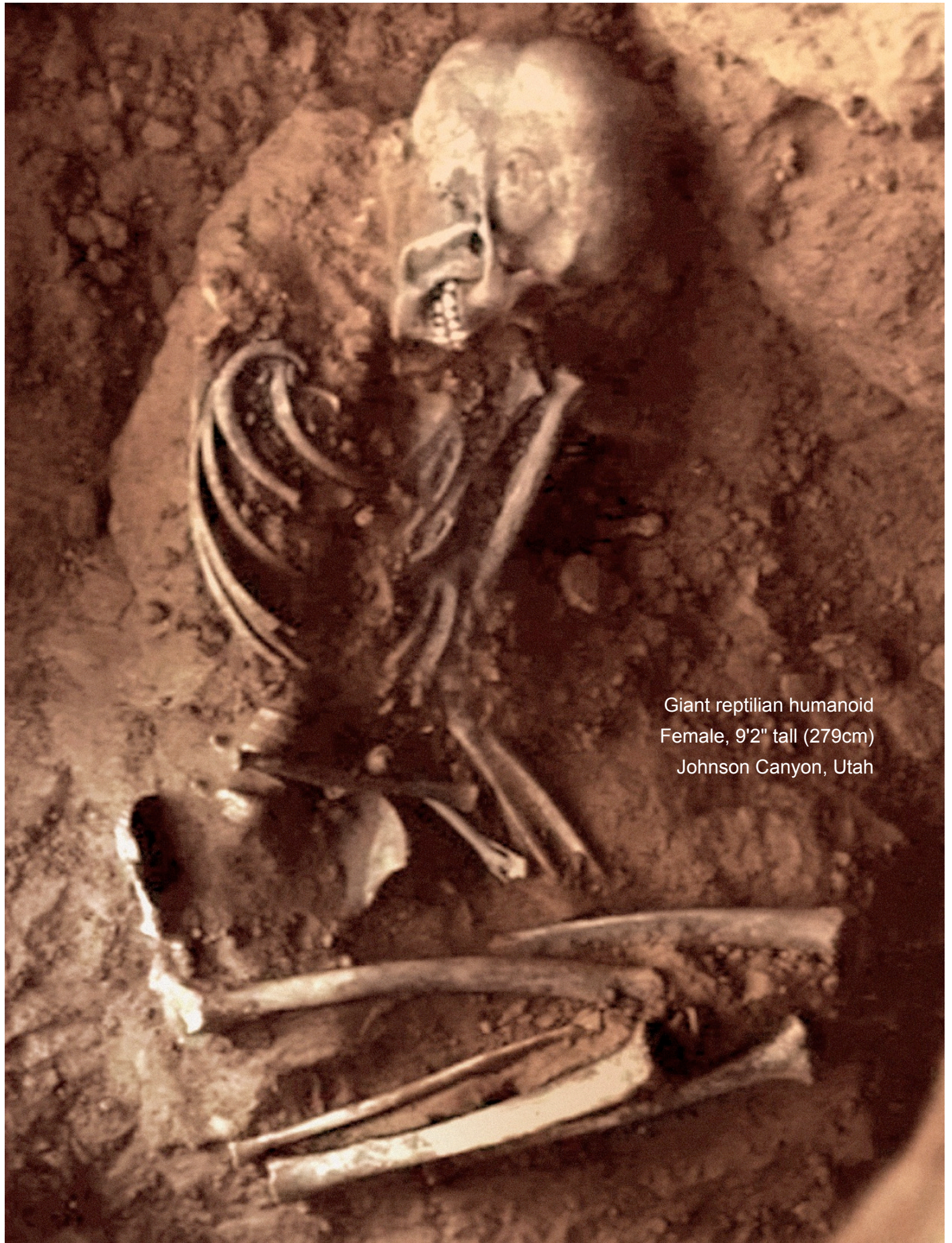


Giant reptilian humanoid skull  
Female, enlarged occipital  
Johnson Canyon, Utah

Cranial enhancements were achieved by psychoacoustic helmets manufactured and used by Atlantean societies in subterranean complexes that were electrically powered and resonantly illuminated by focused infrasound standing waves transduced by the Great Pyramid of Giza, Egypt and received at full intensity in the nodal 'hotspot' located in Johnson Canyon, Utah due to its relative geosition in the nonlinear network.

Johnson Canyon, Utah (37.13°N 112.38°W) is 7,247 miles from the Great Pyramid, a resonant distance comprising 29.11% of Earth's mean circumference of 24,892 miles, and approximating Fibonacci #358 in percent ( $29.38 \times 10^{-73}$ ) and Fibonacci #135 in miles ( $7,308 \times 10^{-24}$ ). These resonant distance calculations confirm the high-precision standing wave alignments underly the relative geositions of the Great Pyramid and Johnson Canyon according to the mandala quantum function [  $z_{n+1} = z_n^2$  ].





Giant reptilian humanoid  
Female, 9'2" tall (279cm)  
Johnson Canyon, Utah





Giant reptilian humanoid  
Male, 8'9" tall (267cm)  
Johnson Canyon, Utah



Despite the lack of DNA results from the pair of giant *Homo draconis* specimens of Johnson Canyon, Utah, their skeletal morphology is so drastically different from normal human skeletons that direct comparison with the unusual physiological features of ancient populations of the Americas confirms their close relationship.

In every case, highly unusual cranio-facial characteristics observed of Kennewick Man, Peñon Woman III, Naia, Luzia and many other specimens are seen in extreme forms in the giant reptilian humanoid skulls from Johnson Canyon, Utah. *The configuration of cranial plates in the giant Homo draconis skulls is entirely different, altogether lacking a parietal suture that human skulls display dividing two parietal plates.*

The only reason these skeletons have not already been confiscated by the US government according to standard procedure relates to the fact that they were found on private property and privately excavated and legally maintained by the property owner. Continued withholding of DNA results has undoubtedly reinforced the property owner's resolve to protect the tombs in their original condition after excavation.

Comprehensive comparison of the giant *Homo draconis* skeletons from Johnson Canyon, Utah with ancient American skulls belonging to mtDNA lineages X2a, D4h3a and D1 confirm their origin as giant reptilian/human hybrids *produced by advanced genetic engineering processes that remain unknown.*

Definitive identification of the *Homo draconis* phenotype facilitates reclassification of a great majority of ancient remains from the Americas prior to ~6,000bp as reptilian/human hybrids, first identified by this author as *Homo sapiens draconis*. These findings strongly support the hypothesis that great numbers of this giant extraterrestrial humanoid species have been using advanced geoengineering and genetic engineering techniques in an attempt to hybridize themselves with the human race on Earth, for their own benefit.

This long-term manipulation of Earthly humanity explains the great abundance of decapitated or mutilated reptilian hybrid skeletons deposited en masse in deep pits. *Human populations rebelled against an imposed system of worship involving human sacrifices to appease the reptilian gods' desire for fresh human blood.*

Many macabre archeological finds clearly indicate that during later periods of the Atlantean Era, from ~17,000-13,000bp, positive spiritual activities that traditionally involved blood removal for physical regeneration in the pyramid chambers became entirely subverted as rituals that included animal and even human sacrifice. The decisively negative spiritual orientation of such regressive ritual activities became prominent among the people of Mu, when worship of the giant reptilian humanoids became widespread.

The bizarre subject of ritual human sacrifices to a reptilian-inspired deity named *Coatzimundi* was directly addressed in channeled material by a world famous psychic medium decades ago, *and remains the most comprehensive explanation for the many bizarre behaviors exhibited by ancient and modern humans alike.* 'Coatzimundi' is a Paleo-Sanskrit votive name composed of eight hieroglyphs reading: **c o a t z i m u n d i** , meaning "cloud, oh, pervading from within, (the) essence (of ) Mu: (the) presence desirous".

Quite extensive and highly disturbing information concerning the appearance, homeworld, self-serving motives and advanced hyperdimensional capabilities of *Homo draconis* was offered by the Akashic Source through the Cassiopaea Experiment channel Laura Knight-Jadczyk (given as dialogs compiled from session dates September 30, October 20 and 22 of 1994; and continued on August 8 and October 14 of 1995):

Q: (L) Was the human race genetically engineered to be slaves? A: Yes.

Q: (L) And who were the genetic engineers of this slavehood? A: Lizard beings [or "Drachomonoids"].

Q: (L) Where do they come from: Earth or another planet? A: Other... Qaddeera.

Q: (L) What star system is that in? A: Zeta Reticuli.

Q: (L) Are the little gray beings from Zeta Reticuli also? A: Yes.

Q: (L) Are the little gray beings... A: Cybergenetic.

Q: (L) Are they created by the lizards? A: Yes...

Q: Who built the city of Mohenjo-Daro?



A: Lizards directly. Coatzimundi legend ties in to this directly look at illustrations on stones now.

Q: Who is Coatzimundi?

A: Other deity of the Lizards worshipped by the Atlanteans and their descendants because of the direct contact with humans for 1000 years.

Q: Now, you said Mohenjo Daro was built by the Lizzies directly. Did they occupy this city themselves? A: No.

Q: When was this city last inhabited continually? A: 3065 years ago.

Q: When was it built? A: 6092 years ago...

Q: (L) Did any aliens at all, and specifically the Lizzies, ever live among mankind and receive worship?

A: They did not live among mankind, but they did interact directly with human beings, at various points in the past. It was at those points when human beings were ready, willing and able to accept deities appearing directly from outside sources and then worship them. Such things would not have occurred in the recent past. But, beware, it may very well occur very soon...

Q: (L) Who built the city of Angkor Wat?

A: That was built by the Lizard Beings themselves. Built approximately 3108 years ago...

Q: (L) Who did they build the cities for?

A: They built the cities for themselves and their worshippers amongst humans...

Q: (L) At one point in a previous transmission it was stated that the Lizard beings altered the human race after a battle for their own "feeding" purposes. Could you clarify this?

A: It would not be possible for these beings to completely control your existence. If it were you would not be able to do the things your race has done. There has been interference by the Lizard beings in the physical structure of the human beings for their own benefit. Remember what we told you before. They have been interfering with the time cycle experienced on this plane, for quite some time as you measure it. For 74 thousand years they have been interfering in a backwards and forwards time reference manner in order to set up circumstances that they perceive to be beneficial for them in the measure of time that you would consider to be forward, that is, in the future. They have been going backwards and forwards in time to do this. They are suspended in the time cycle as they do this. So what they perceive as being your equivalent of one hour could be as long as 74 thousand years.

Q: (L) So they haven't been here for 300 thousand years?

A: They originally set up circumstances for their benefit 309 thousand years ago, however, they have been using the particular bracketed period of the 74 thousand year period to alter things in all the various ways mentioned earlier...

Q: (L) Who was Arajuna of Tiahuanaco?

A: Well, we believe that you are referring to one of approximately eight hybrids that ruled the area currently referred to as Central America. Hybrids being a 4th density to 3rd density transfer experiment from the Lizard race to the human race, which was abandoned after approximately 240 years of experimentation by the Lizard Beings, due to the lack of success for sustaining physical duplication, or reproduction of the race. It was one of several attempts by the Lizard Beings to directly transmit their souls into 3rd density environment for permanent placement there. And, of course it is no longer perceived as necessary by them because their intention is to rule 3rd density beings in 4th density when they arrive there.

Q: (L) Who built the city of Tiahuanaco? A: The Lizard Beings in cooperation with humans.

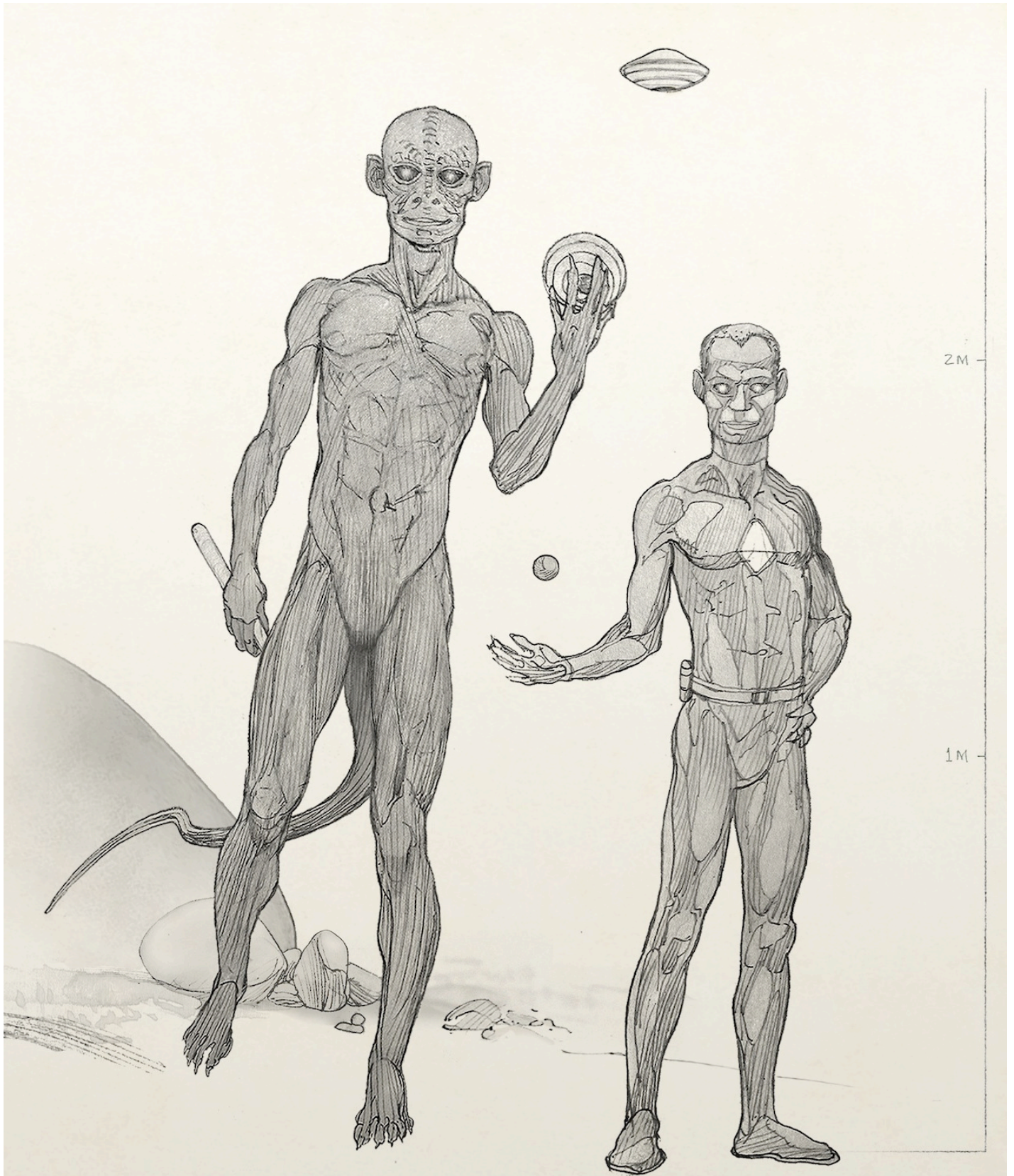
Q: (L) When was it built? A: Varying time frames since it seems to have been destroyed at two points. We have to estimate an average of 8,000 years prior to the current time, as you measure it...

(L) In terms of finite numbers, how many of these STS aliens of any different group, or any combination of groups all together, do we have operating on this planet at the present time? A: Specify.

Q: (L) OK, how many Lizzies are operating on the planet? A: 300,000...

Q: (L) How many grays? A: 2,750,000.





GIANT REPTILIAN

*Homo draconis*

REPTILIAN HYBRID

*Homo sapiens draconis*





Giant reptilian humanoid skull  
Johnson Canyon, Utah ~14,000bp





Acutely dolichocephalic and quite drastically elongated reptilian/human hybrid skulls of this type are continually excavated in the context of ancient pyramid-building cultures throughout the world –and the Americas do not represent an exception– *because extreme cranial elongations were artificially induced by wave genetics and related psychoacoustic functions of the pyramid chambers through exposure to focused infrasound standing wave resonance.*

Resonant conception, fetal gestation and waterbirthing practices were developed by the Atlantean civilization for conferring genetic cleansing in addition to various health benefits, and inducing a special technological state of enhanced consciousness known as 'samadhi', a Vedic term signifying the state of "Universal delivering".

For this reason, extreme cranial elongations of this type can be expected from excavations of tunnels and chambers within the giant Pyramids of Zu located in Ravalli County, Montana.

The comprehensive set of distinctive cranial features of the mitochondrial DNA haplogroup X2a seen in the red pipestone (catlinite) skull from just east of the Pyramids of Zu confirm the reptilian hybrid genetics and appearance of ruling Atlantean classes in Zu. *With so many unmistakable features of the giant ET reptilian humanoid species retained, the only viable conclusion remains high-tech genetic engineering.*

Paracas mtDNA X2a  
Reptilian hybrid skull  
Ica, Peru ~1,500bp



The clearly established exact size relationship with the Visoko pyramid complex in present-day Bosnia, indicates a corresponding construction date for the Montana's Pyramids of Zu at ~35,500bp, during the second phase of the high Atlantean civilization, under the influence of retrogressive ritual activities from Mu. Cayce stated 'Lemurian' activities involved human hybridization with not only humanoid species from other planets, as documented in *Baal Hybrids* (2018), *but human genetic lines were also hybridized with animals.*



Reptilian hybrid head, braids  
Cañamo woman, mtDNA X2a  
Calama, Chile ~3,200bp

Lineages of the ruling class among the people of the adjacent Pacific regions of La (also known as 'Le'), Mu, Ri and Zu were apparently hybridized with giant ET reptilian humanoids, while other human lineages were made subservient to the ruling class through suffering inherited physical half-human, half-animal deformities.

All evidence for any such half-human, half-animal physical traits among human populations from the Late Paleolithic has certainly been suppressed by government archeology, yet the wealth of hybrid human-animal imagery dating to that period is well known. The most famous examples are the Sphinx, sitting on the Giza Plateau of Egypt (which is actually >29,000 years in age) and the Zurvan lioness in upright human posture excavated from Hohlenstein-Stadel Cave in Lonetal, Germany dating to ~40,000bp.



Guaycurá woman, D4h3a  
Baja Peninsula, Mexico





Karankawa man, D4h3a  
Gulf Coast, Texas



Hundreds of kneeling human figures with the horned heads of water buffalo were cast in black geopolymer jade by the people of Wu, at the City of Gold in present-day Inner Mongolia, actually dating from the third and final phase of the Atlantean civilization lasting from ~30,000-13,000bp.

According to Edgar Cayce's omniscient trance readings, Late Paleolithic populations bearing residual human-animal deformities (from prior genetic experimentation conducted on their ancestors) were called 'Things' by genetically purified human groups; Sons of the Law of One. Genetic experimentation included perverse ritual fornication activities of the Sons of Belial, or Baal, as the giant reptilian humanoids are cryptically named in the Bible. Cayce explained that a great portion of this genetically deformed human population was wiped out during the Great Flood of ~30,030bp, after which time many such deformities were surgically removed and regenerated as normal human limbs through HHO plasma healing in the Temple of Beauty –the Great Pyramid of Giza, Egypt.<sup>30</sup>

While human children are still occasionally born with vestigial tails, a much greater portion of the living human population preserves reptilian genes from ancient hybridization events. Prime examples are seen among extinct indigenous lineages of North America that –despite a complete lack of DNA testing– can also be presumed to include mtDNA haplogroup D4h3a; especially the Karankawa people of the Texas Gulf Coast (above) and the Pericú people who occupied the southernmost areas of Mexico's Baja Peninsula.

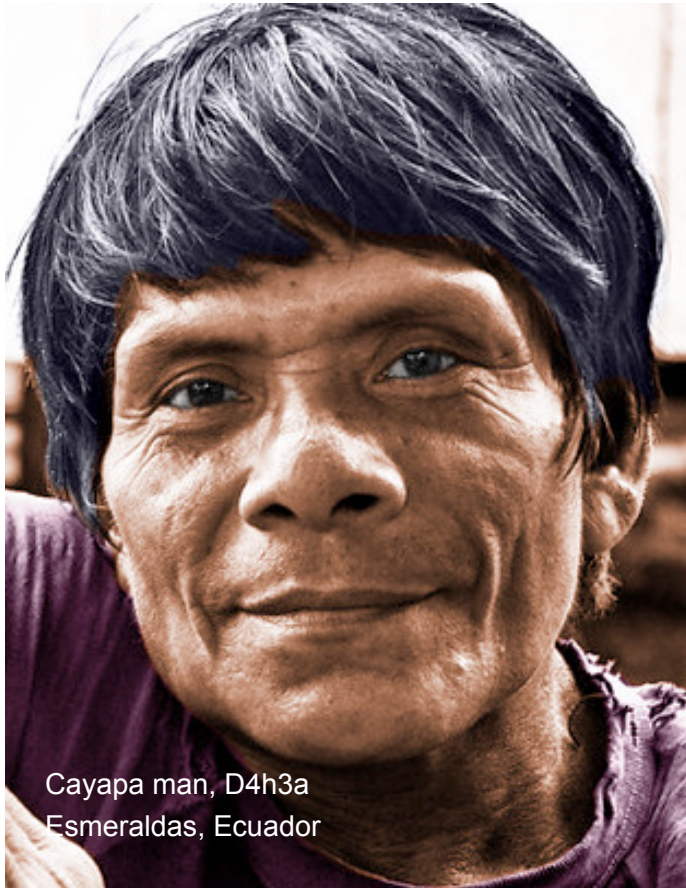
Various accounts given by Spanish explorers who entered Karankawa territory described their men as possessing an impressive physical build and stature, many of who stood over six feet in height. These accounts also note that the Karankawa observed a prolonged period of mourning following the death of a member of their group, involving prayer for the departed individual 3 times daily for an entire year.<sup>31</sup>

Cranio-facial characteristics of the skulls of the Karankawa display the same unusual configuration of sutural bones at the pterion and heavy jaws with raised, hook-shaped muscle attachment sites on the zygomatic bones and at the rear of the lower mandible. Their dolichocephalic form is also consistent with D4h3a mtDNA heritage, supporting their close relationship with the earliest groups known to occupy the Americas.

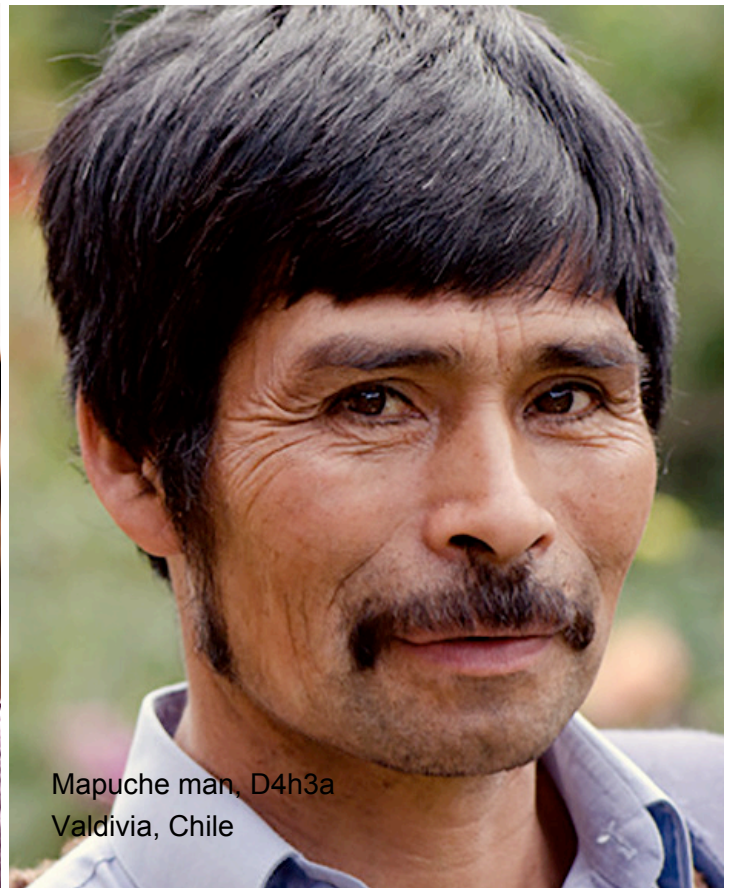


The ancient name 'Karankawa' can be succinctly translated as a Paleo-Sanskrit votive phrase comprised of five hieroglyphs, reading: **kar an ka w a**, meaning "Works (of the) Breath following (the) mark, ah". This ancient votive name references the Divine Breath, whose 'works' mark the landscape by their invisible pressure of infrasound standing wave resonance amplified from cosmic forces by the giant planet Jupiter.

A related group that once inhabited Baja, Mexico southward from Espiritu Santo Island, the Pericú people occupied large cave networks. Extensive murals have been discovered at a great number of these cave sites, presenting large ceiling panels painted in mesmerizing red ochre and black charcoal patterns. Deep shell deposits evince over 40,000 years of continual occupation, according to RC14 dating (Fujita *et al.* 2002).<sup>32</sup>



Cayapa man, D4h3a  
Esmeraldas, Ecuador



Mapuche man, D4h3a  
Valdivia, Chile

Genetic mixture of the Pericú with the neighboring Guaycurá people who occupied the north and central regions of the Baja Peninsula until recent times (overleaf) suggest traces of the founding D4h3a haplogroup may be found at a much lower proportion than that seen among the Pericú people.

While genetic testing of skeletal remains from known Pericú gravesites has not yet been conducted, the presence of Pericú individuals belonging to closely related mtDNA haplogroups D1 and X2a is quite likely. According to recent estimates provided by molecular biologists, haplogroup X2a first appeared ~13,000 years ago, and therefore cannot be considered among the founding lineages of the Americas.

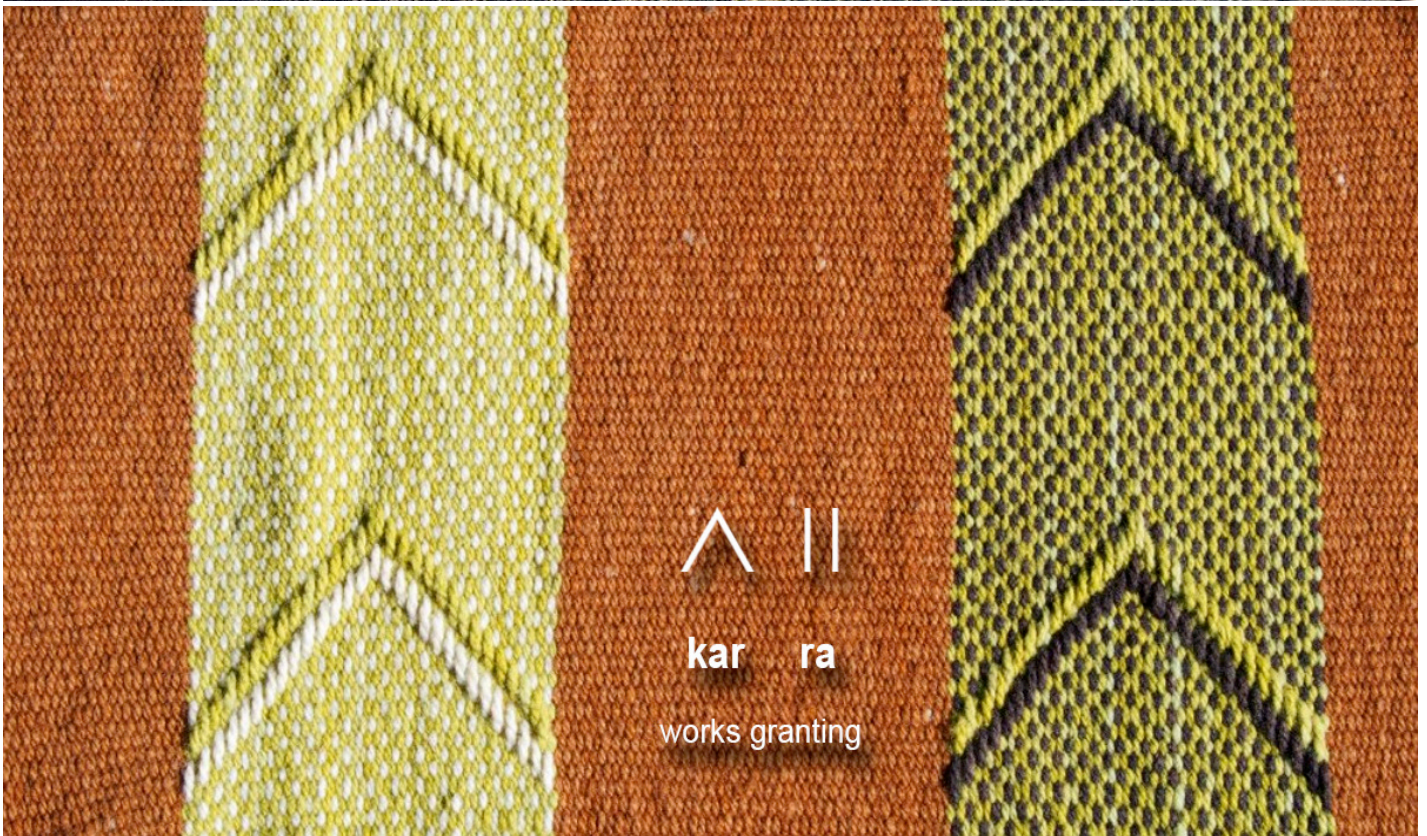
The two main founding mtDNA lineages of the Americas have been designated as D1 and D4h3a, and are found in shared cultural contexts at various archeological sites with highly advanced megalithic pyramids and temples dating to the Late Paleolithic and Holocene Periods. These haplogroups are expressed at high proportions among the Cayapa (or Chachi), originally from the northern Ecuadorian Andes (above, left).

Another notable example is seen among the Mapuche people of present-day region of southern Argentina and Chile (above, right), who also retain many cultural traditions and physiological characteristics of the original people of the Atlantean Pacific regions of La, Mu and Zu. While seen at a much lower proportion among the Mapuche, studies do confirm the presence of mtDNA haplogroup D4h3a lineages.





Mapuche machi with drums  
Valdivia, Chile ~1900

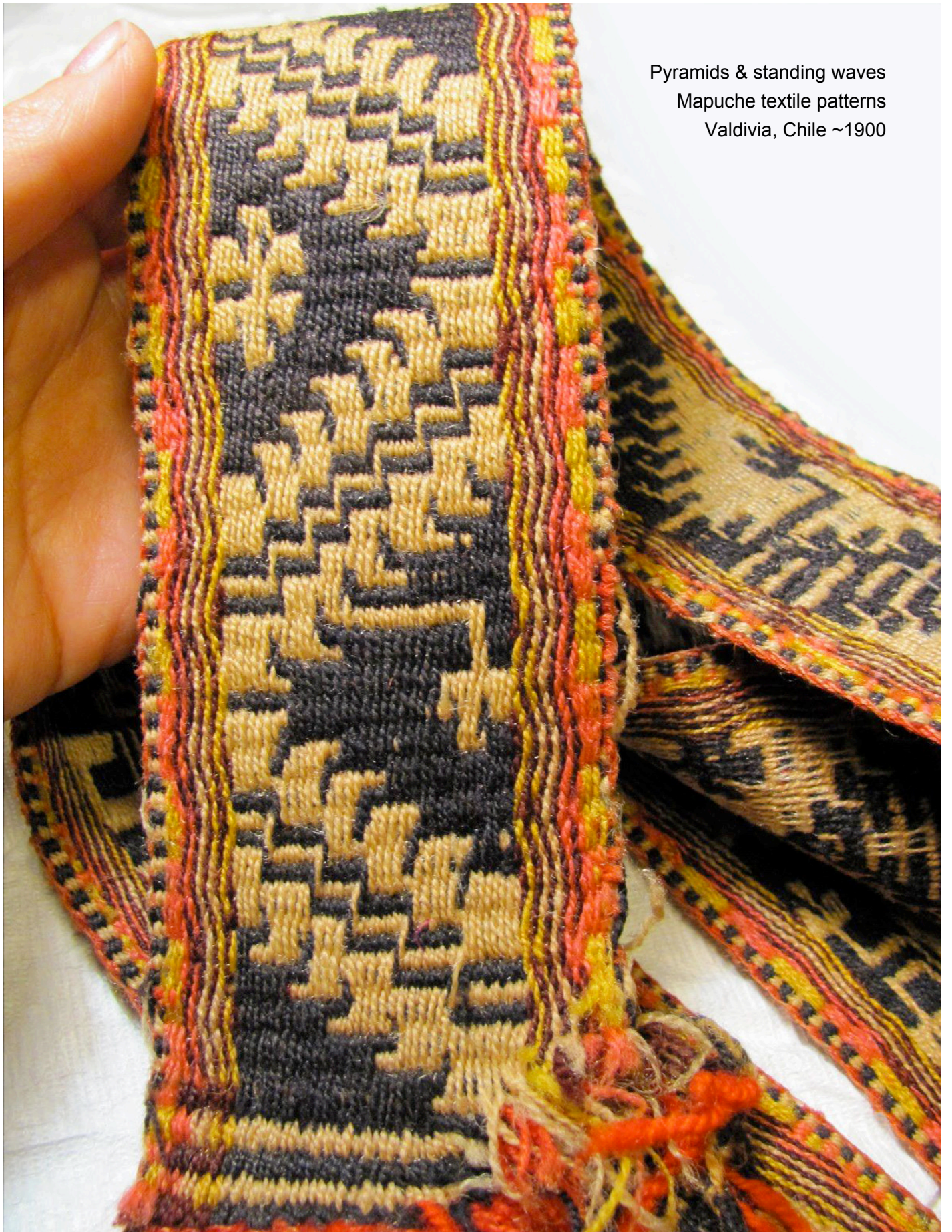


^ ||

kar ra

works granting





Pyramids & standing waves  
Mapuche textile patterns  
Valdivia, Chile ~1900



Relative isolation in the southern reaches of the South American continent have preserved many traditional ways of the Mapuche culture; beautiful weaving skills as well as psychoacoustic drumming and healing practices of the machi. More violent practices were also performed until recently, including the last known ritual human sacrifice called for by machi Juana Namuncurá Añen during the 1960 earthquake event to appease Earth spirits. Two men were prosecuted for murdering a boy, but were not convicted for the ritual.

Many indigenous groups of southernmost Chile and Argentina belong to the founding mtDNA haplogroup D4h3a; Late Paleolithic migrants from the lost Pacific lands of Mu who emigrated to the Americas to escape the catastrophic loss of their homeland ~30,030bp. All these maritime groups used similar canoe designs.<sup>33</sup>



Aónikenk men, fur robes  
Patagonia, Argentina

The Aónikenk people still occupy Patagonia, Argentina (~24,000 population), representing another closely related lineage with a high proportion of individuals belonging to the D4h3a mtDNA haplogroup (above). Their hair was typically grown long and held back by a white cotton headband; yet another cultural link.

The Aónikenk people display a strong physical resemblance to the Ainu indigenous people of the modern Japanese archipelago (opposite), despite thousands of miles separating the groups. The Ainu of Hokkaido call their homeland *Ainu Moshir*. With an estimated population of approximately 45,000, this ancient and distinct racial group still occupies northern Honshu, Hokkaido, as well as the Sakhalin and Kuril Islands of present-day Russia.<sup>34</sup> The Ainu also use quite similar canoe designs as those of the southernmost South American maritime groups, suggesting the D4h3a mtDNA haplogroup is also expressed among the Ainu.

In the Ainu language, 'Ainu' means "humans" or "man", yet these people were formerly known as the 'Ezo', after 'Ezoichi' –the name of their northern homeland of Hokkaido. This distinct group was previously known for thousands of years as the 'Emishi', which can also be clearly translated as a Paleo-Sanskrit ligature reading: em i shi , meaning "course (of) This, (of the) sunrays".



These ancient names preserve clear Paleo-Sanskrit votive meanings that accompany a complete set of traditional practices that can be traced far back into the Late Paleolithic Period. Fortunately, much is known about the ancient system of beliefs and associated customs still practiced by many Ainu groups today.

Quite interestingly, Ainu traditions include the practice of drinking fresh animal blood from sacrifices, presumably linked with Deer and Bear Kamuy ceremonies recorded on film by ethnographers in the early 1900s.<sup>35</sup> Until recently, similar practices were quite common among many indigenous cultures throughout the world, and specifically among various genetic lineages related to the Ainu. Ritual human sacrifices known from the Mapuche of Chile are not observed among Ainu traditions.



Ainu man, dugout canoe  
Hokkaido, Japan

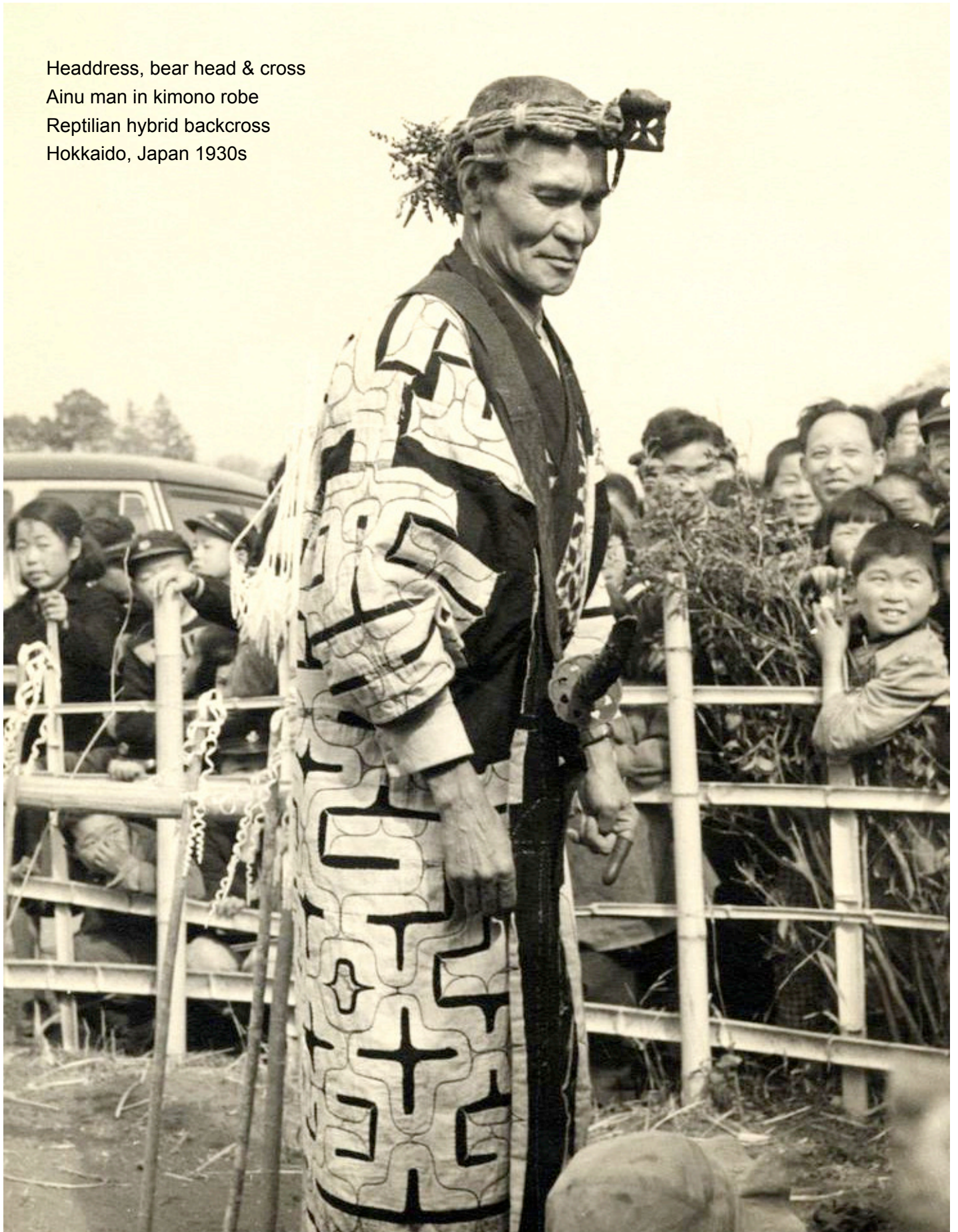
Drinking of fresh blood from animal sacrifices is also known among the males of the Mapuche indigenous culture of present-day southern Chile and Argentina, linking the practice to the founding mtDNA haplogroup D4h3a. Independent cultural retention of this practice for so many thousands of years among genetically related groups dispersed as far as Tierra del Fuego and Hokkaido evinces an origin in traditions of their shared ancestral Paleo-Sanskrit cultures of Mu and Zu, in the Central Pacific and Western US.

Survival of the Ainu culture is directly linked with advanced Atlantean metallurgical knowledge facilitating their manufacture of sophisticated samurai swords, in addition to longbows, that were combined with skilled horsemanship to effectively defend the large northern land of Hokkaido from Imperial Chinese invasion.

The great height of many Ainu warriors was noted by American soldiers in World War II, who were quite surprised to see attacking Japanese soldiers well over 6' tall whose light complexion and bearded faces were not recognized as Japanese.<sup>36</sup> These are examples of reptilian hybrid genes still present in Hokkaido. Genetic studies carried out on Ainu groups have been entirely inadequate in characterizing the diversity of haplogroups and their actual proportions expressed among such ancient populations as the Ainu.



Headdress, bear head & cross  
Ainu man in kimono robe  
Reptilian hybrid backcross  
Hokkaido, Japan 1930s





Ainu mens' traditional headdresses display a wooden bear carving with a sacred cross symbol (opposite) that is identical to the ancient Mediterranean sacred symbol known as the Coptic Cross, Philae Cross and the Rose Cross of the Rosicrucian Order. These sophisticated cultural traditions were inherited from as sacred traditions of La, set out during the Atlantean Era before the peninsula of La was subducted.

As indicated by Edgar Cayce, strong cultural affinities between the Paleo-Sanskrit people and culture of La with the populations of Zu suggest that similar customs and dress seen among the Ainu were worn among the men and women of Zu, along with the customs of animal sacrifice and the consumption of fresh blood.

While clear phenotypic and genetic connections link all of these maritime-adapted groups distributed so widely throughout the Pacific Rim, genetic sampling has been entirely inadequate to provide a coherent picture of gene flow patterns. Only 59 individuals have been sequenced among the Ainu population, and even fewer individuals among the smaller South American groups. Further DNA analyses will undoubtedly unravel the dynamic relationships that exist between these disparate refugees of the lost lands of Mu.

Cayce gave an interesting Life Reading on June 16, 1937 that delved into a client's previous incarnation as Lala, who lived during the Atlantean Era ~30,000 years ago, having been born to the royal house in the Pacific lands of La; as the Princess of La (Reading 1387-1):

Not all appearances [or incarnations] are given, then, but those that make for an influence in the experience of the entity in the present. Then as the application is made, as there is the growth, more and more will there become a unison of that undertaken as Princess La in Indo-China, where there are uncoverings even now of the city in which the entity resided...

The entity then was a princess in the City of Gold; and in the temple of same did the entity minister –not only to her own people but in aiding to draw the activities from other lands; as from Saneid [now India], as from Ra [now Egypt], as from Wu (now China and Mongolia), and as from the teachers from the Carpathians [then called Yak] and from Og [now Peru]. These all were a part of the entity's activities –the teachings of these.

And as the entity gave hope, understanding, faith, confidence, knowledge to the whole of the Earth in those experiences,... when as Lala you gave so much to the world and kept those tenets of Ra, of Saneid, of Wu, of Og... Before that we find the entity was in the land now thought of or termed as La, or Mu –Lamu. Those experiences then made for the determining between the thought forms and those that materialized into what became man.

This nuanced information offered by the Source through Cayce references such advanced technological concepts that the average person may not understand. The Atlanteans' capacity for high-speed aerospace transport was enabled by circular vimana ships, which flew between pyramid complexes.

The final paragraph of the Reading 1387-1 excerpt also requires further explanation of "those tenets" that are mentioned. Cayce gave a broader context through hundreds of other readings over three decades that described the primary function of the Great Pyramid, involved genetic purification procedures for applying HHO plasma to the human body in the pyramid chambers, thereby removing the physiological traces of animal/human hybridization experiments that had deformed the genetic expression of much of humanity.

During trance sessions, Cayce specified that before the Great Flood event of ~30,030bp a significant portion of humanity at that time possessed asymmetrical bodies with malformed limbs and part-animal appendages, including talons, scales, fur, spines, hooves, horns, tails, etc. Many of the surviving human lineages were still physically entangled in the genetic experimentation of their ancestors *who were hybridized with animals*.

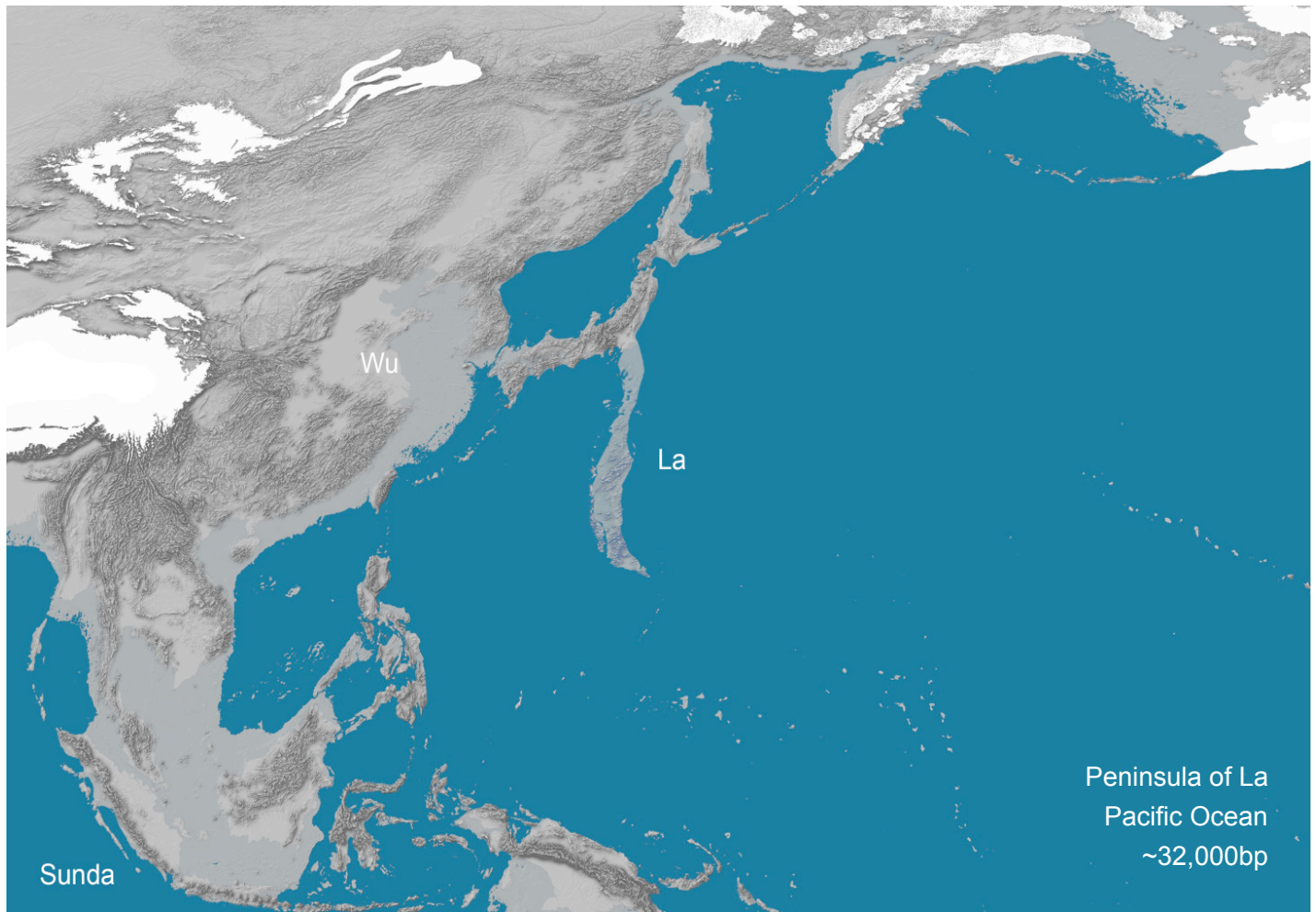
High medical knowledge of the Atlanteans offered surgical and regenerative healing options for amputation of non-human appendages and impediments followed by regeneration of the original genetic structure of the individual, followed by the physical regeneration of entire limbs, if necessary, using HHO plasma technology.

The Cayce material explains amputations were conducted in the Temple of Sacrifice, now erroneously called the Pyramid of Khafre (middle of the three large pyramids), while regenerative processes were undertaken in the Temple of Beauty, presently called the Great Pyramid. Cayce's reference to "those thought-forms that materialized into what became man" relates to this high-technological genetic purification *whereby entire groups born with part-animal deformities were returned to the 'perfect form' we now recognize as human*.



These unsettling statements are directly supported by the abundant half-animal, half-human imagery found throughout the artistic expressions of the ancient world, especially the animal-headed humanoid figures of Egyptian temple reliefs and most significantly –the hoards of animal-headed humanoid sculptures of Wu executed in geopolymer jade, called ‘black-skin jade’, from the ruins of the City of Gold, in Inner Mongolia.

The Princess of La would have mostly likely had an unadorned appearance somewhat similar to a modern Ainu woman in traditional dress wearing face paint over a large facial tattoo surrounding the lips (opposite). The custom of facial tattooing is a rare exception among so many other complex Emishi traditions from La that were entirely adopted by Imperial Japanese society. If their customs were similar those of the people of Wu, members of the royal house of La most likely lived among the general population at that time.



The Paleolithic Jomon people once occupied the islands today known as Japan, as well as the narrow peninsular landmass that extended south from Honshu called La (also 'Le'), meaning “beholding” in Paleo-Sanskrit (above). The Jomon were identified as a lost race from Atlantean times called the *Parantha*, in explanations given by the Akashic Source channeled via medium Laura Knight-Jadczyk on May 31, 1997:

A: Atlantis was merely a home base of an advanced civilization of 3 races of humans occupying different sections of a huge Island empire, which, in itself, underwent 3 incarnations over a 100,000-year period...

Q: *The 3 races were the Celts... and who were the second and third?...* A: Race you would call "Native Americans," and a third, no longer existing race, somewhat resembling Australian or Guinean aborigines, only lighter in complexion. [see Ainu photographs]

Q: *So, the Paranthas were the antecedents of the Abos of Australia?* A: Yes, and compare to now existing peoples of India, Pakistan, Sri Lanka, Australia, and New Guinea for similarities, bearing in mind genetic mixing & dilution.

Q: *Were the Vedas written by the Paranthas or written by the Celts?*

A: Descendants of Parantha, as per "Divine guidance."



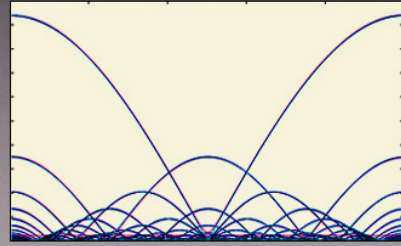
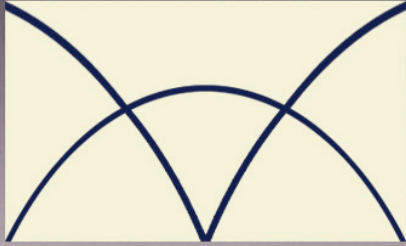


Ainu woman, painted facial tattoo  
Reptilian hybrid backcross  
Hokkaido, Japan 1930s









Standing wave motif  
Ainu mens' kimono robe  
Hokkaido, Japan 1930s

The colorfully embroidered robes of male Ainu Elders display mesmerizing pattern-work including shoulder patches that present unmistakable geometric designs encoding standing wave resonance (insets, above). Advanced Atlantean physics knowledge was embedded in this psychoacoustic sacred symbol that was passed down for countless generations from the Parantha ancestral people of La, since the catastrophic sinking of the narrow Asian Pacific landmass that had been their primary homeland throughout all three phases of the Atlantean Era lasting from ~74,000-13,000bp.





☾ ☽ □ △ || △ |||

mi - is Indra kar ra kar r<sup>a</sup>u<sup>a</sup>  
 synchrony (of) Jupiter, works granting, works roaring

Ainu mens' traditional katana & tanto  
 Paleo-Sanskrit inscriptions & bear teeth  
 Hokkaido, Japan 1900s





Geopolymer granite cornerstones  
Nagoya Castle foundations  
Nagoya, Japan



In practical terms of design and function, Ainu textiles are actually quite similar to those of ancient Peru and Ecuador, once called the lands of Oz and On during the Atlantean Era, according to Cayce's Source. The square format of Ainu folding cloths conform to the octagonal geometric configuration of the Sanskrit mandala of consciousness, just as seen among modern Andean weavers and rendered in temporary sand paintings by Native American and Tibetan ancient cultural traditions on both sides of the Pacific Ocean.<sup>37</sup>



Geopolymer granite megaliths  
Japanese Imperial Palace  
Edo Castle - Tokyo, Japan

Ainu teachings were passed down for successive generations with a wealth of traditional stories that convey the great wisdom of their ancestors. Elders have retold the *Yukar Popo* history to Ainu youth for countless generations, which teaches: "The Ainu lived in this place 100,000 years before the Children of the Sun."

This simple statement relates a verifiable fact now becoming evident to humanity, as we apply the tools of paleogenetics to map the details of finely woven threads binding the tapestry of the human past. Certainly, 'the Children of the Sun' refers to the Chinese people who followed the Imperial army, which invaded the main southern islands of the Japanese archipelago ~1,400bp, now known as Honshu and Okinawa.

The ancestors of the Ainu people, called the Emishi at that time, were able to defend the northernmost island of their original homeland from the Chinese invasion, while the people who occupied the rest of the archipelago were forcefully assimilated under Chinese rule. Integration of the Chinese and Emishi peoples, with traditions descended from Wu and La, has yielded the modern Japanese people and culture, preserving many Atlantean ways such as *the swords of samurai*, *the kimono* –and *Zazen meditation*.

Megalithic castle foundations, as seen at Nagoya Castle in central Honshu, are actually Atlantean Era sites. The Japanese Imperial Palace was built on megalithic foundations at Edo Castle in present-day Tokyo (above) cast in geopolymer granite by the Paleo-Sanskrit Parantha people of La, ancestors of today's Ainu.





Geopolymer granite megaliths  
Japanese Imperial Palace  
Edo Castle - Tokyo, Japan



Geopolymer granite megaliths  
Japanese Imperial Palace  
Edo Castle - Tokyo, Japan







Megalithic geopolymer masonry  
Himeji Castle foundations  
Osaka, Japan







Polygonal geopolymer masonry  
Himeji Castle foundations  
Osaka, Japan









Polygonal geopolymer masonry  
Kanazawa Castle  
Kanazawa City, Japan











Located in Ishikawa, Japan, Kanazawa Castle displays exquisite stonework (below). However, stonemasons who rebuilt rough wall sections there *did not possess the chemistry knowledge required for replicating the original Paleo-Sanskrit geopolymers casting techniques*. Remnants of megalithic castles distributed across the islands of present-day Japan display the same telltale evidence of dual construction phases showing a clear disparity of technical ability. Of course, the same pattern of evidence is witnessed at Paleo-Sanskrit temples and pyramid sites throughout the world.

The abundance of ancient castles of the same type distributed throughout modern Japan offers a wealth of insight into the highly advanced megalithic construction styles of the Parantha people that once thrived in the Pacific regions, then known as Wu and La. *Petrological analyses of this beautiful polygonal stonework cast in geopolymers stone will undoubtedly reveal the hidden presence of fine particulate metals distributed throughout granite and basalt matrices.*

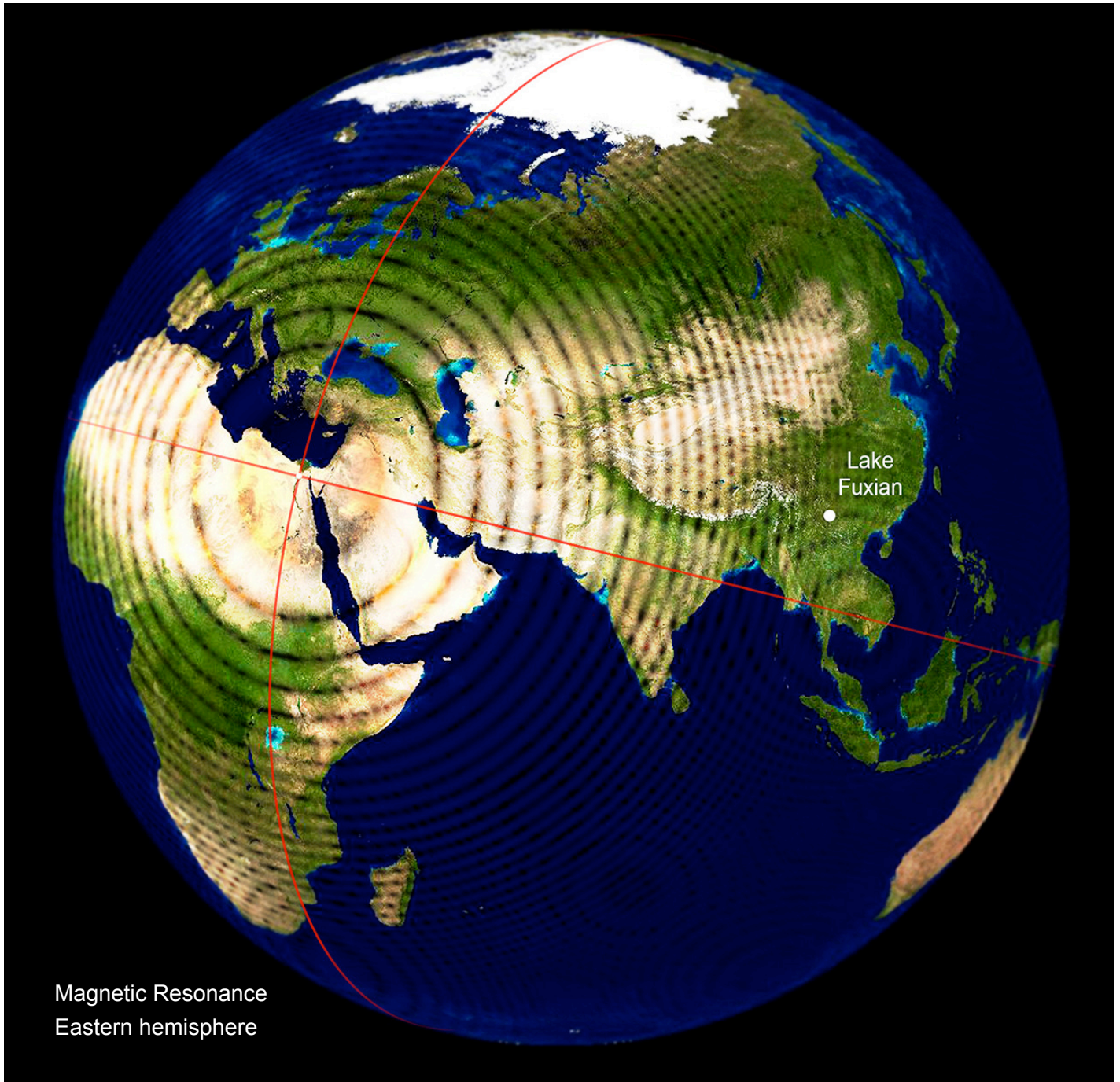


A regional map indicating the locations of Atlantean Era castles built by the Parantha in the regions of La and Wu (p. 63) shows that particular style of pyramid construction predominated in the Pacific coastal regions, while only one such structure has survived to the present in what is now Central China.

The characteristically angled cornerstones and slightly curved façades of these pyramidal castle foundations present an essential stylistic feature that is not seen elsewhere in the world, with one quite significant exception that has been well hidden by Chinese government authorities –one that reveals direct links between Atlantean geopolymers constructions located in China with those of Japan. *This fact explains why the Chinese and international news media have published so few images of these sunken ancient pyramids.*

In 2005-06, specialized diver Geng Wei discovered an extensive Paleo-Sanskrit complex beneath Lake Fuxian, located in Yunnan, China.<sup>38, 39</sup> Government sonar scans later revealed a city with plazas, towers, a round stone tumulus and a pair of quite large and amazingly preserved pyramids of the Japanese type.





Magnetic Resonance  
Eastern hemisphere

After several days of observation, sonar scans and analyses, experts estimated the scope of the area is [ $\sim 2.5$  km<sup>2</sup>]...[A total of 30 structures and] eight main buildings were found all under the water, including a round, colosseum-like building with a 37m wide base and a gap to the northeast and two large high [pyramidal] buildings with [tiered] floors [connected by long vertical stairways], similar to the Mayan pyramids. One of the large, high [pyramids] has three floors, a 60m wide base... Another is even larger, with a 63 m wide base standing five floors (totally 21 meters high). A 300m long and 5-7m wide rock road connects the two buildings.<sup>40</sup>

The large twin pyramids of the Atlantean Era city –only recently found laying dormant below the waters of Lake Fuxian– display the same curved lower façades, paired configuration and interconnecting walkway with subterranean tunnels seen at Nagoya Castle, Japan. *The Fuxian pyramid complex is >13,000 years old.*

The Pyramids of Wu, below Lake Fuxian, China (24.5023°N, 102.8889°E, above), are situated 4,361 miles from the Great Pyramid of Giza, Egypt. The Wu pyramid complex was purposefully geopositioned along the resonant distance interval comprising 17.52% of Earth's mean circumference of 24,892 miles.

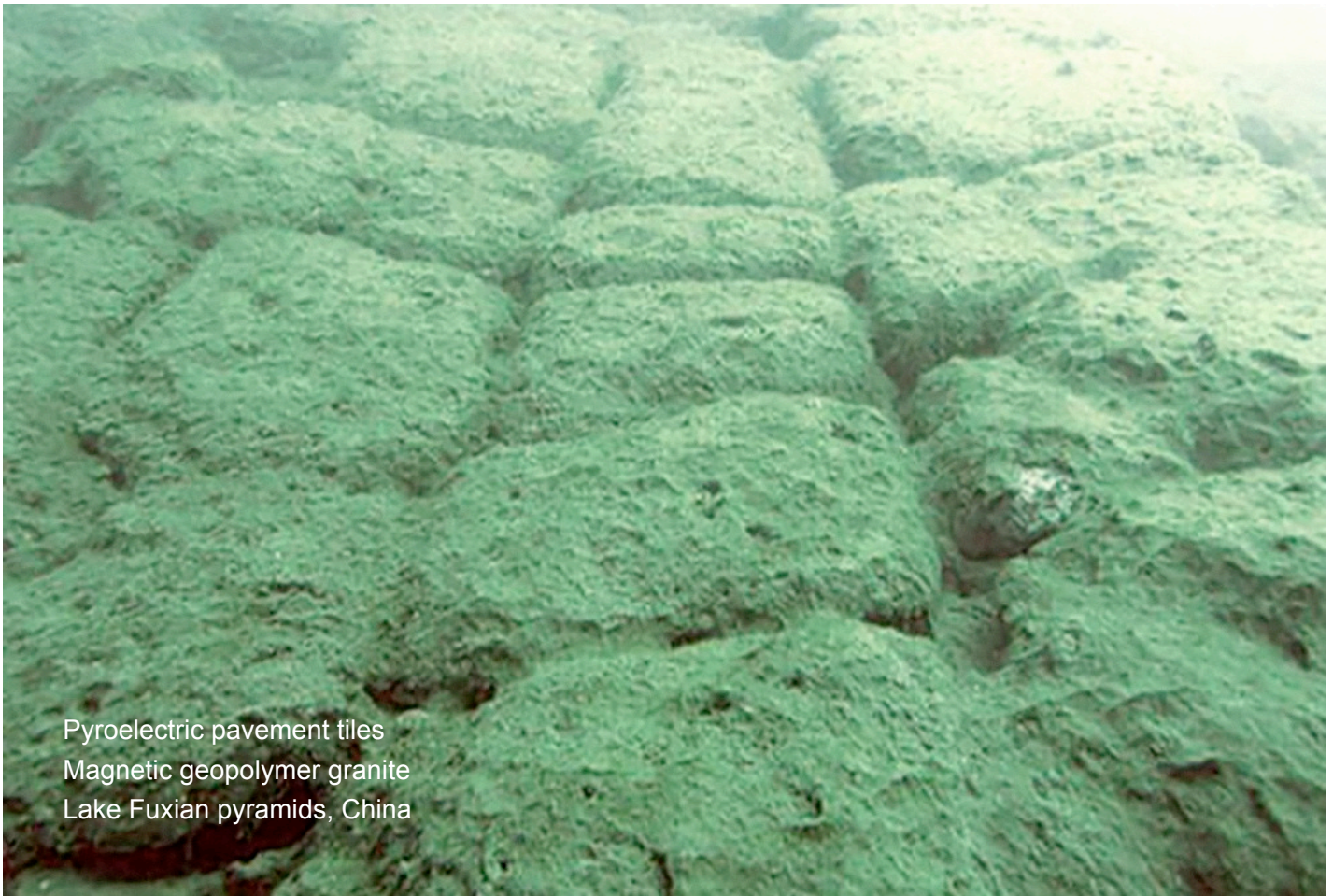


Sunken pyramids of Wu  
Digital reconstruction  
Lake Fuxian, China



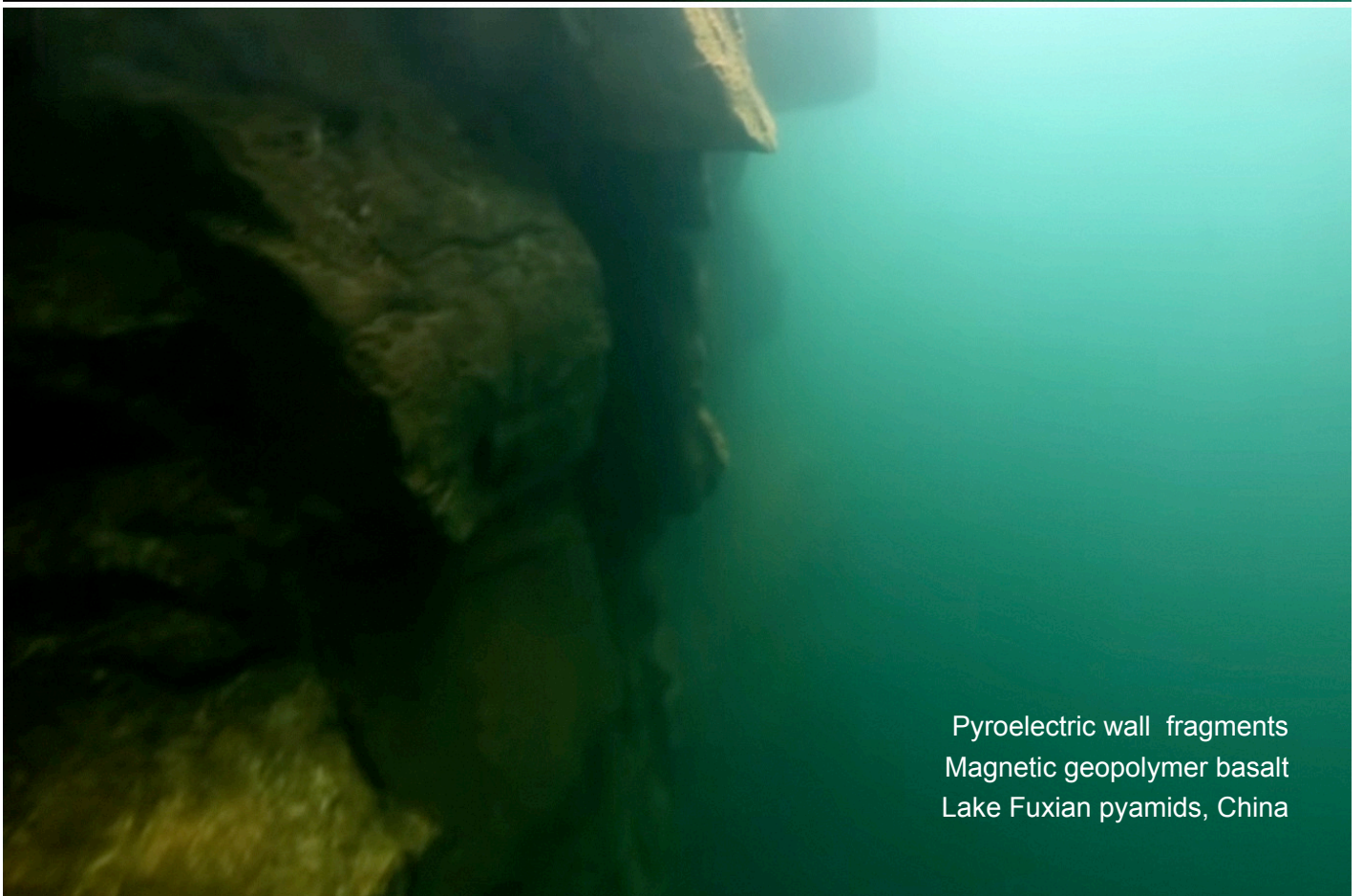
Magnetic geopolymer basalt tiles  
Lake Fuxian pyramids, China





Pyroelectric pavement tiles  
Magnetic geopolymer granite  
Lake Fuxian pyramids, China





Pyroelectric wall fragments  
Magnetic geopolymer basalt  
Lake Fuxian pyramids, China



Entirely inadequate mass media news reporting of this extremely significant discovery has withheld a great amount of data on the sites and its age, which has been erroneously depicted with Chinese-style roofs and falsely characterized as belonging to the Han Period only 1,700 years ago, according to fraudulent Chinese government radiocarbon dating methods based on shells taken from surfaces of the stonework.

False dates for this ancient sunken city beneath Lake Fuxian are completely exposed by a basic microscopic analysis of walkway pavement sections composed of magnetic geopolymer basalt were preserved along the 300m causeway adjoining the two large pyramids. Pyroelectric geopolymer granite walkway pavements are also evident in photographs of the city's paved roads and platforms, discernable by their rougher forms.



Magnetic geopolymer granite blocks  
Lake Fuxian pyramids, China

The semiconductor geopolymer granite of the Wu pyramids is still activated erratically by cosmic, solar and planetary influences as elevated infrasound resonance, causing camera and submersible drone equipment failures directly above the structures, exactly as experienced by operators investigating the Baltic Sea monument in Eastern Europe, Nan Madol temple in Micronesia and the Padang Pyramid in Indonesia.

These EM effects of Atlantean 'firestone' geopolymers provide a new, comprehensive understanding of the complex network of Late Paleolithic temples and pyramids and their Atlantean builders, whose genetic heritage underlies Pacific maritime diffusion of the D4h3a haplogroup descendants from the lands of Mu.



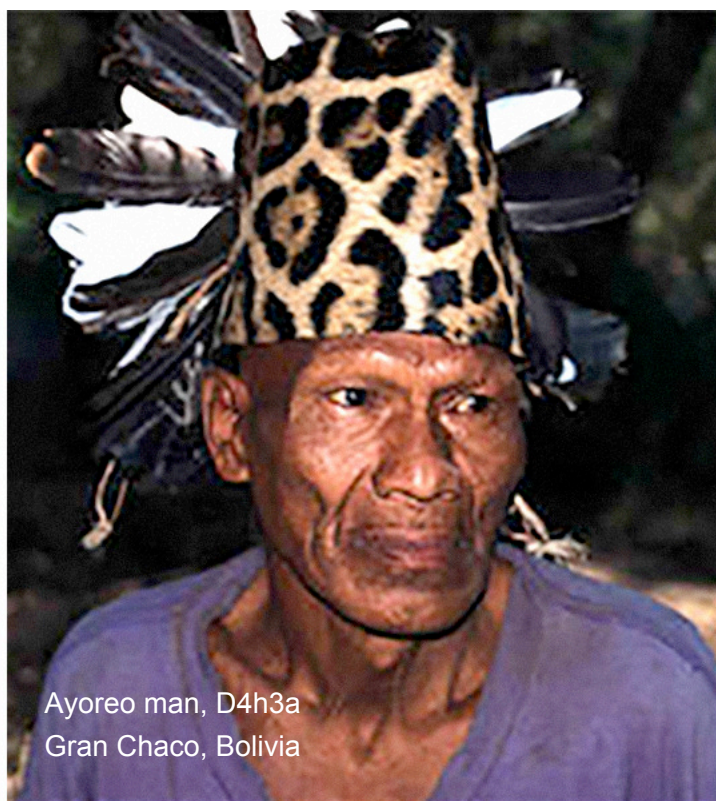
There are several extant indigenous groups whose genetic origins remain unknown, who apparently share the same ancient ancestry that includes a significant proportion of individuals belonging to the D4h3a mtDNA lineage. DNA studies of the Maijuna people of the southeastern Peruvian Amazon have not been published –yet must be considered a priority due to fact that less than 500 members of this group remain.<sup>41</sup>

The robust cheekbones and brow of a Maijuna man are marked in red face paint repeating an ancient Paleo-Sanskrit votive ligature reading: **kar ra**, meaning “works granting” (below, left). His yellow headband displays orange hieroglyphic ligatures reading: **• adhi raua tata •••**, meaning “The One delivering roaring (of the) Father, the One roaring...” Votive markings such as these are common among Amazonian groups.

Another lesser-known group with similar genetic ancestry is the Ayoreo people of the Gran Chaco, in the present-day countries of Bolivia, Argentina and Paraguay, who also have not been DNA sequenced (below, right). Distinctive features of these living human groups confirm their descent from the populations of Mu.



Maijuna man, D4h3a  
Amazon, Southern Peru



Ayoreo man, D4h3a  
Gran Chaco, Bolivia

Studies of the hypervariable regions of mtDNA have revealed the closest relatives to the aforementioned Cayapa people of Ecuador are, in fact, *the Kapingamarangi of Micronesia*. Kapingamarangi is an outlying atoll located near the magnetic geopolymer basalt ruins of Nan Madol, on Pohnpei Island and extending far offshore below sea level.<sup>42</sup> Both the Cayapa and Kapingamarangi possess the 9-bp deletion shared by members of mtDNA haplogroup D4h3a and the B haplotype, revealing a common origin in the lands of Mu:

In a sample of the 204 Cayapa tested, 39% had the 9-bp deletion. We characterize this as the X.I type of deletion, caCCCCTCTA (Lum and Cann 1998). This mutation is found in the gene pool from which both Austronesian speakers in the Pacific and some Amerinds of North and South America arose. The frequency of the deletion is in close agreement with observations with regard to other Amerind groups from South America –such as the Mapuche and Mataco of Argentina, who possess it at a frequency of 36% (Ginther *et al.* 1993; Torroni *et al.* 1993; Bailliet *et al.* 1994), and the Mexican Zapotec, who possess it at a frequency of 33% (Torroni *et al.* 1994).

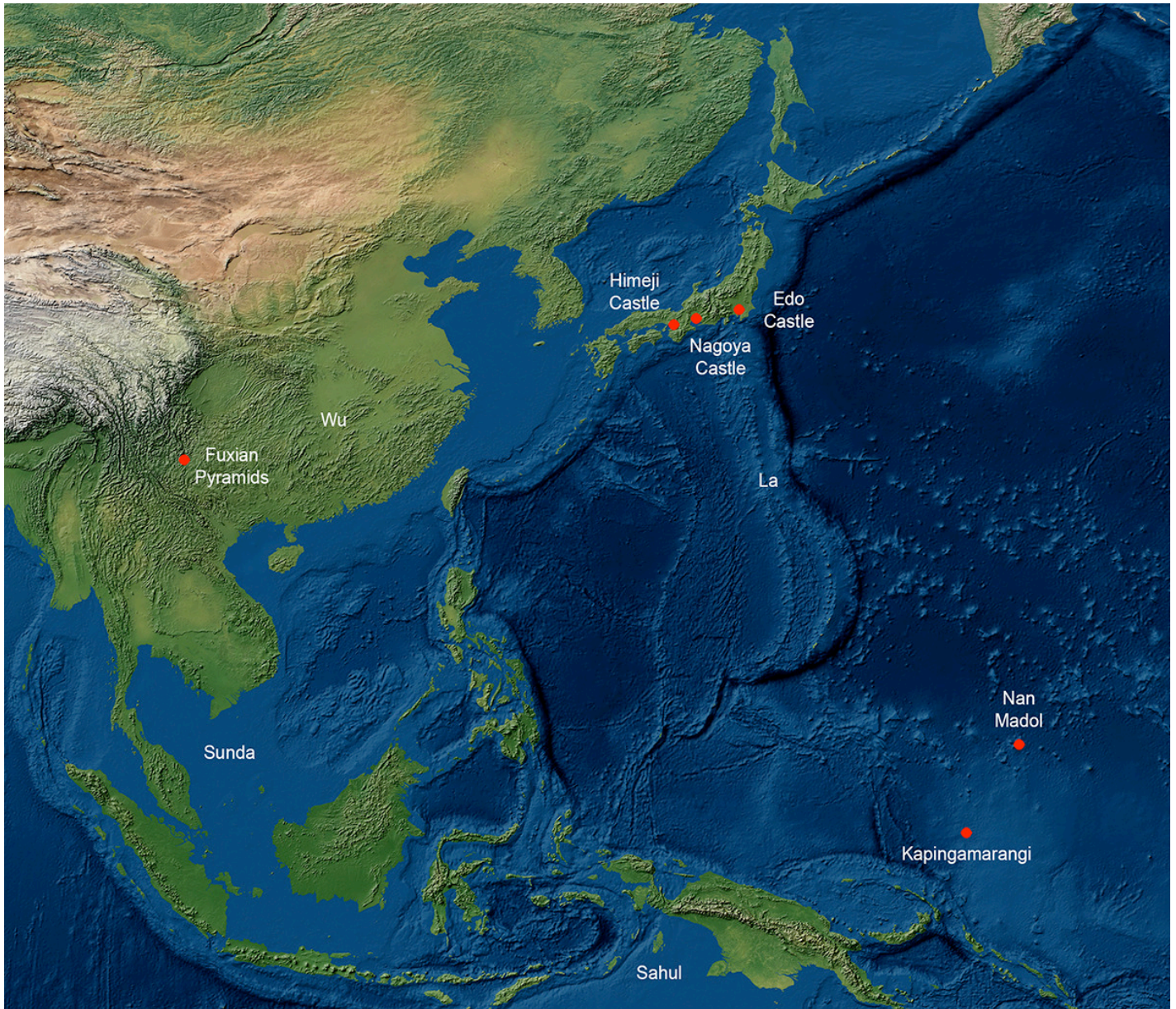
Amerinds from other areas generally possess this deletion in highly variable frequencies, and it tends to be most concentrated in populations settled along the coastline on both sides of the Pacific Rim. This deletion is known, on the basis of studies of ancient donors, to have been present in the North American Rockies 8,000 ybp (Stone and Stoneking 1996), but it shows no obvious correlation with linguistic characteristics in the Americas, and it is absent in circum-Arctic groups today (Shields *et al.* 1993).





Magnetic geopolymer basalt plinths  
Nan Madol - Pohnpei, Micronesia





The 9-bp deletion of the X.I type (Lum and Cann 1998), when examined by direct sequencing, occurs on the same broad group of control-region haplotypes belonging to the B-haplotype cluster in every Pacific Rim population sampled thus far, suggesting that the deletion is probably monophyletic for the Americas...

[When all haplogroups of the sequenced Cayapa population are taken into account,] results... show the Cayapa to be the closest genetic relatives of a group of non-Native Americans (to date, the Kapingamarangi, a Polynesian outlier within Micronesia)...<sup>43</sup>

Careful application of quantum standing wave resonance mapping, along with interpretation of all relevant indications from genetic studies and archeological findings of human remains and megalithic geopolymer stonework throughout the Pacific region, clearly verify Edgar Cayce's trance statements on these subjects.

Mitochondrial DNA haplogroup relationships observed among indigenous populations of the Americas and Asian Pacific regions strongly support Cayce's contention that those dispersed groups are actually direct descendants of the displaced peoples of Mu; submerged sacred landscapes of the Central Pacific Ocean.

Ancient gene flow patterns into the Americas by evacuees from Mu during the Late Paleolithic Period will be further resolved in the broader context of the extraterrestrial hybridization agenda by forthcoming excavations and eventual entry into the Atlantean Pyramids of Zu, resonating in the high altitudes of western Montana.



## References

---

- <sup>1</sup> Putney A (2018) '*Magnetic Center*' Human Resonance, online  
· [http://www.human-resonance.org/Magnetic\\_Center.pdf](http://www.human-resonance.org/Magnetic_Center.pdf)
- <sup>2</sup> Putney A (2008) '*Phi*' Human Resonance, online · <http://www.human-resonance.org/phi.pdf>
- <sup>3</sup> Putney A (2008) '*GOES-10 Satellite Records Atmospheric Resonance*' *Human Resonance*, online  
· <http://www.human-resonance.org/sphere.html>
- <sup>4</sup> -- (2012) '*Gallery: Chrandel Creek Fire – July, 2012*' *Billings Gazette*, online  
· [https://billingsgazette.com/news/state-and-regional/montana/gallery-chrandal-creek-fire/collection\\_b8f98d79-aecf-5f7d-a6e4-525060582f6b.html#1](https://billingsgazette.com/news/state-and-regional/montana/gallery-chrandal-creek-fire/collection_b8f98d79-aecf-5f7d-a6e4-525060582f6b.html#1)
- <sup>5</sup> Putney A (2009) '*GOES-10 Satellite Records Atmospheric Anomaly*' *Human Resonance*, online  
· <http://www.human-resonance.org/sphere.html>
- <sup>6</sup> Op cit, Putney '*Magnetic Center*'
- <sup>7</sup> Castaneda C (1984) '*The Fire From Within*' Simon & Schuster: New York
- <sup>8</sup> Putney A (2018) '*The Zurvan Lioness*' *Human Resonance*, online · <http://www.human-resonance.org/zurvan.html>
- <sup>9</sup> Putney A (2011) '*Kundalini in Ecuador*' Human Resonance, online  
· [http://www.human-resonance.org/Kundalini\\_in\\_Ecuador.pdf](http://www.human-resonance.org/Kundalini_in_Ecuador.pdf)
- <sup>10</sup> Johaneck D (2012) '*Death Valley's Lost City*' *Living Moon*, online  
· [https://www.thelivingmoon.com/43ancients/02files/Death\\_Valleys\\_Lost\\_City.html](https://www.thelivingmoon.com/43ancients/02files/Death_Valleys_Lost_City.html)
- <sup>11</sup> Op cit, Putney '*Phi*', pp. 108-112
- <sup>12</sup> Tong L (2007) '*Astonishing Discovery of Ancient Chinese Civilization*' Antara News/PRNewswire-AsiaNet, online  
· <http://www.antara.co.id/en/arc/2007/8/13/astonishing-discovery-of-ancient-chinese-civilization/>
- <sup>13</sup> Putney A (2018) '*Baal Hybrids*' Human Resonance, pp. 127-150, online  
· [http://www.human-resonance.org/Baal\\_Hybrids.pdf](http://www.human-resonance.org/Baal_Hybrids.pdf)
- <sup>14</sup> -- (2019) '*Reading 630-2: the Whole Reading*' *American Geoglyphs*, online  
· <https://americangeoglyphs.com/1137-2/reading-630-2-the-whole-reading/>
- <sup>15</sup> Putney A (2013) '*The Visoko Pyramids & Ravne Megaceramic Texts*' *Human Resonance*, online  
· <http://www.human-resonance.org/visoko.html>
- <sup>16</sup> Op cit, Putney '*Magnetic Center*'
- <sup>17</sup> Bostrom PA (2009) '*Catlinite Pipes: East of the Rockies Middle Woodland to Historical Periods - Page 1*' *Catlinite Pipes*, online · <http://www.lithiccastinglab.com/gallery-pages/2009julycatlinitepipespage1.htm>
- <sup>18</sup> Bostrom PA (2009) '*Catlinite Pipes: East of the Rockies Middle Woodland to Historical Periods - Page 2*' *Catlinite Pipes*, online · <http://www.lithiccastinglab.com/gallery-pages/2009julycatlinitepipespage2.htm>
- <sup>19</sup> Whittall A (2014) '*Pericue, Lovelock Natives and Mummies*' *Patagonia Monsters*, online  
· <http://www.patagoniamonsters.blogspot.com/2014/01/pericue-lovelock-natives-and-mummies.html>
- <sup>20</sup> Op cit, Putney '*Phi*' pp. 1-18
- <sup>21</sup> Whittall A (2014) '*mtDNA D4h3a Haplogroup*' *Patagonia Monsters*, online  
· <http://www.patagoniamonsters.blogspot.com/2014/01/mtdna-d4h3a-haplogroup.html>
- <sup>22</sup> Op cit, Putney '*Baal Hybrids*'



- 
- <sup>23</sup> Satheesha Nayak B, Sounya KV (2008) 'Unusual Sutural Bones at Pterion' *Pulsus*, online · <http://www.pulsus.com/scholarly-articles/unusual-sutural-bones-at-pterion.html>
- <sup>24</sup> Uchewa OO, Egwu OA, Egwu AJ, Nwajagu GI (2018) 'Incidence of Wormian Bones in the Dried Skull of Nigerian Males' *Pulsus*, online · <http://www.pulsus.com/scholarly-articles/incidence-of-wormian-bones-in-the-dried-skull-of-nigerian-males-4275.html>
- <sup>25</sup> Op cit, Putney 'Baal Hybrids' pp. 1-100
- <sup>26</sup> Ibid, pp. 23-24
- <sup>27</sup> Ibid, pp. 36-40
- <sup>28</sup> Miller B (2015) 'Archeologists Find Oldest Decapitated Skull in South American Hunter-Gatherer Mortuary Ritual' *Culture24*, online · <http://www.culture24.org.uk/history-and-heritage/archaeology/art537837-oldest-decapitation-skull-east-brazil-mortuary-ritual>
- <sup>29</sup> Ghostwolf R (2004) 'Legends of Aztlan and the Giants of the Rockies' *Stargate Files*, online · <http://www.robertghostwolf.com/Aztlan/outheretv.htm> (Removed)
- <sup>30</sup> Putney A (2017) 'One' Human Resonance, online · <http://www.human-resonance.org/One.pdf>
- <sup>31</sup> -- (2018) 'The Karankawa People' *Indigenous People*, online · <https://www.indigenouspeople.net/karankaw.htm>
- <sup>32</sup> --(2008) 'An Interview with Harumi Fujita on the Archeology of Baja California Sur, and Possibly One of the Oldest Sites in the Americas' *Inner Explorations*, online · <https://www.innerexplorations.com/bajatext/an.htm>
- <sup>33</sup> Op cit, Whittall 'mtDNA D4h3a Haplogroup'
- <sup>34</sup> Ito K (2016) 'Have You Heard About the Ainu? Elders of Japan's Indigenous People Speak' *Youtube*, online · <https://youtu.be/0Q6cYEQUpBg>
- <sup>35</sup> -- (2017) 'The Ainu of Japan - Bear Ceremony Documentary 1931' *Youtube*, online video · <https://youtu.be/qk-en58gnAk>
- <sup>36</sup> -- (2018) 'The Fascinatingly Mysterious Origins of the Ainu' *Youtube*, online · <https://youtu.be/zFohbr7ALeQ>
- <sup>37</sup> Op cit, Putney 'Phi' pp. 70-79
- <sup>38</sup> Scally P (2014) 'New Underwater Archeological Discoveries Made at Fuxian' *Gokunming*, online · <https://www.gokunming.com/en/blog/item/3338/new-underwater-archeological-discoveries-made-at-fuxian>
- <sup>39</sup> -- (2018) 'Enigmatic Carvings on Underwater Ruins in China Mystify Investigators' *Ancient Origins*, online · <https://www.ancient-origins.net/unexplained-phenomena/enigmatic-carvings-underwater-ruins-china-mystify-investigators-009794>
- <sup>40</sup> -- (2015) 'Underwater City: Unveiling the Secrets at the Bottom of Fuxian Lake' *Ancient Pages*, online · <http://www.ancientpages.com/2015/06/13/underwater-city-unveiling-the-secrets-at-the-bottom-of-fuxian-lake/>
- <sup>41</sup> -- (2019) 'Indigenous Communities' *Nature & Culture International*, online · <https://natureandculture.org/indigenous-communities/>
- <sup>42</sup> Putney A (2018) 'Human Resonance: Magnetized Temples of Nan Madol' *Youtube*, online video · <https://youtu.be/l9DfWX879b4>
- <sup>43</sup> Rickards O, Martínez-Labarga C, Lum JK, De Stefano GF, Cann RL (1999) 'mtDNA History of the Cayapa Amerinds of Ecuador: Detection of Additional Founding Lineages for the Native North American Populations' *American J. of Human Genetics* 65, pp. 519-530, online · [https://www.cell.com/ajhg/pdf/S0002-9297\(07\)62068-0.pdf](https://www.cell.com/ajhg/pdf/S0002-9297(07)62068-0.pdf)